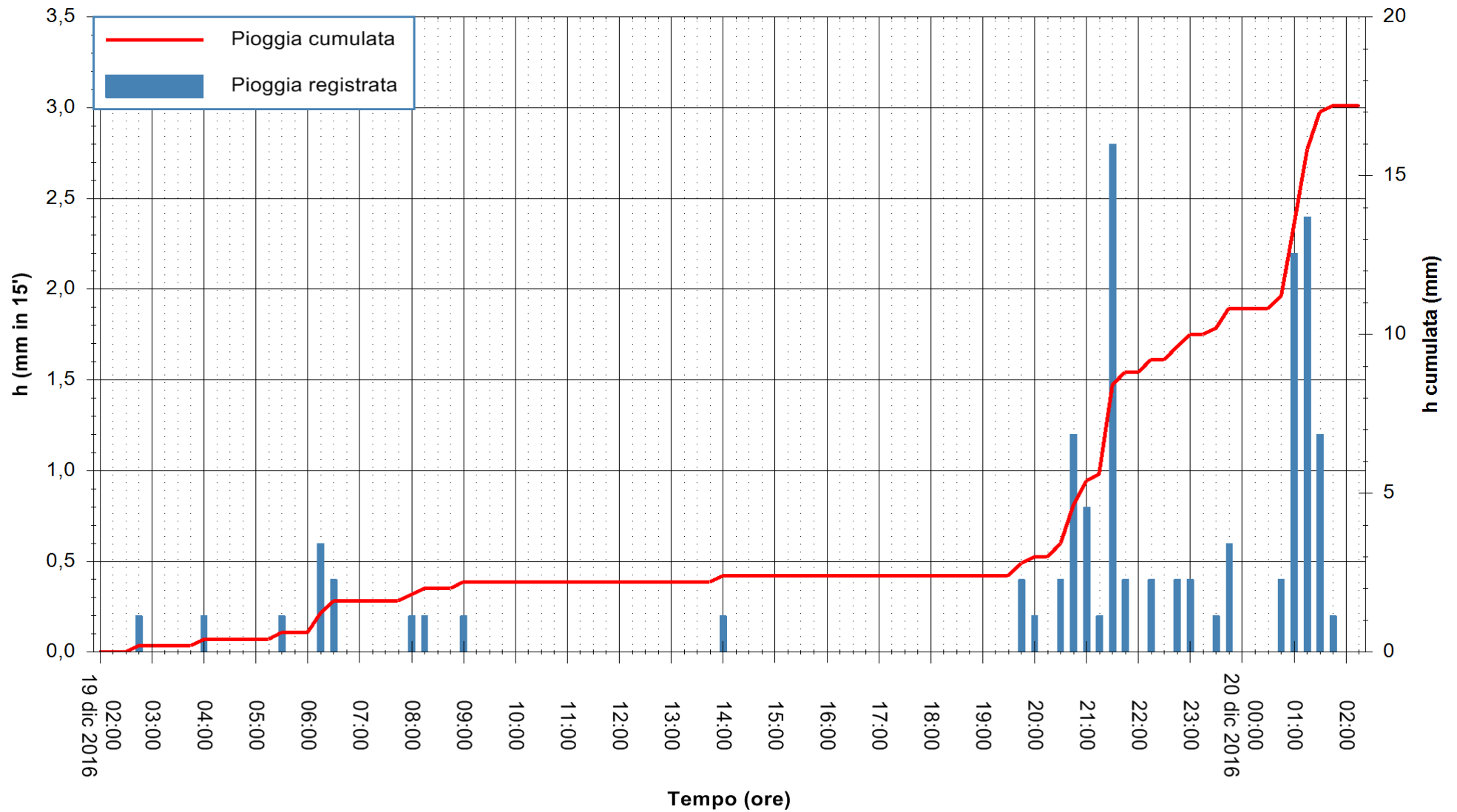


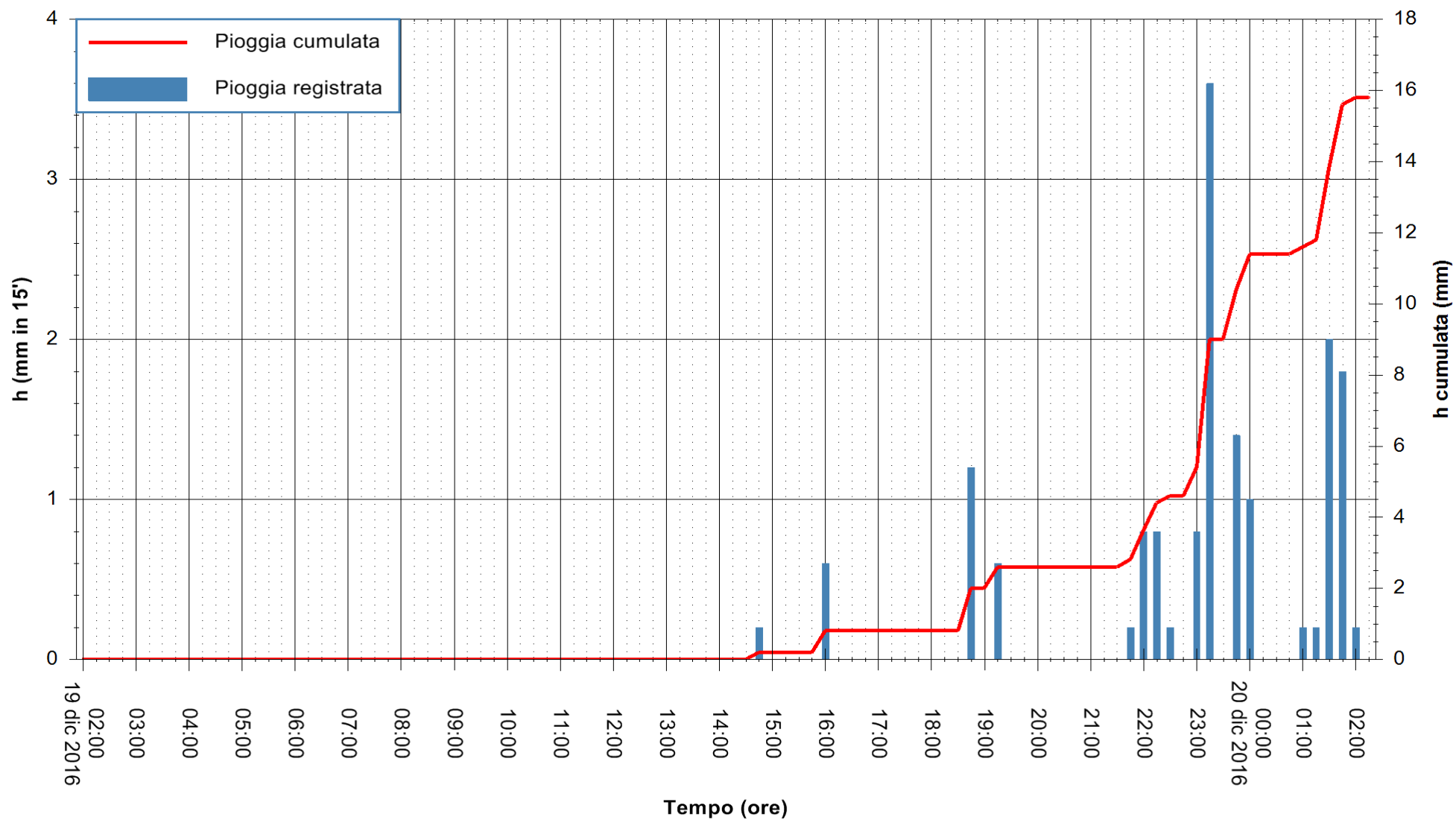
Stazione pluviometrica Fluminimannu a Decimomannu
Area DECIMOMANNU
Pioggia registrata nelle ultime 24 ore
Consultazione alle ore 03:51 del 20/12/2016

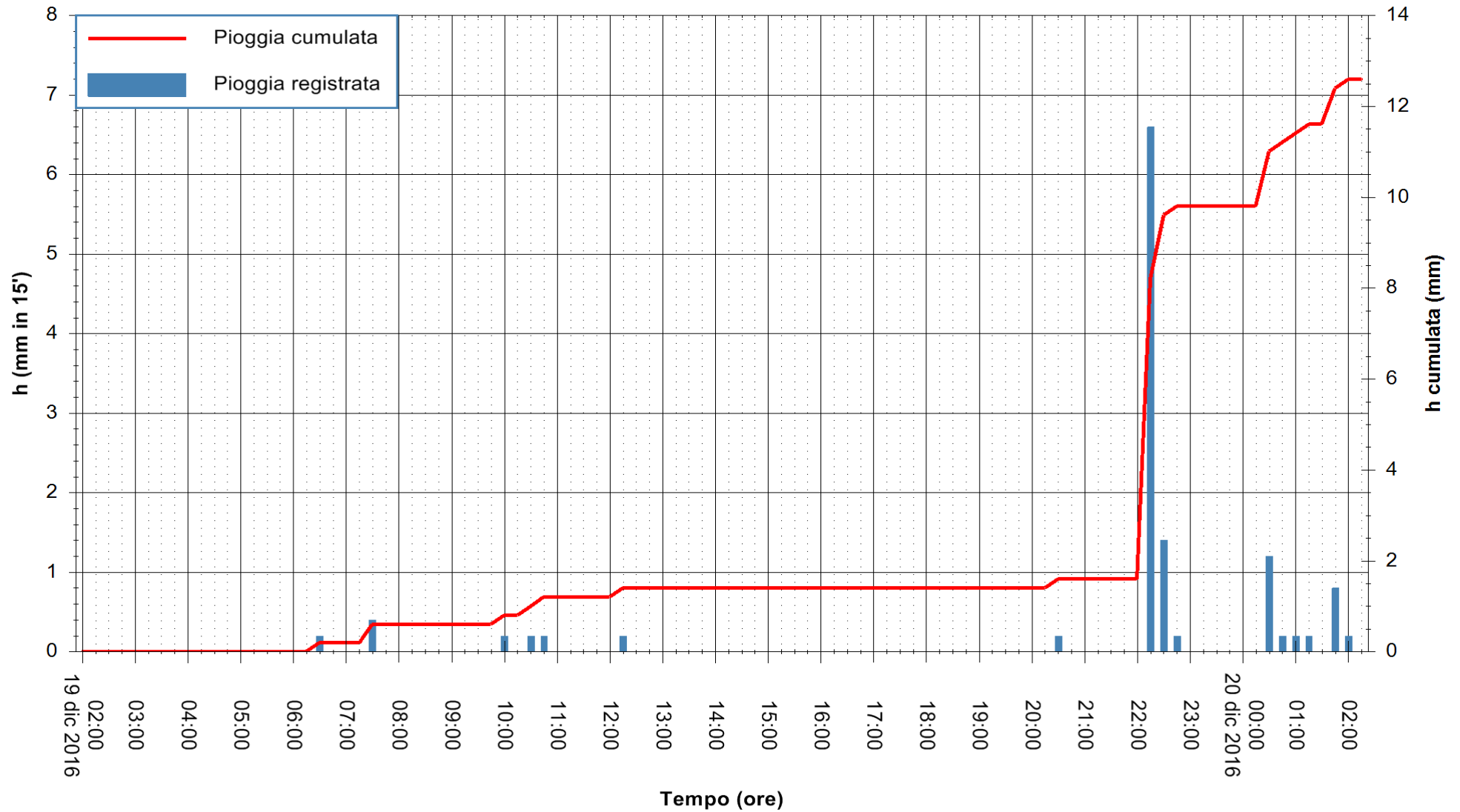


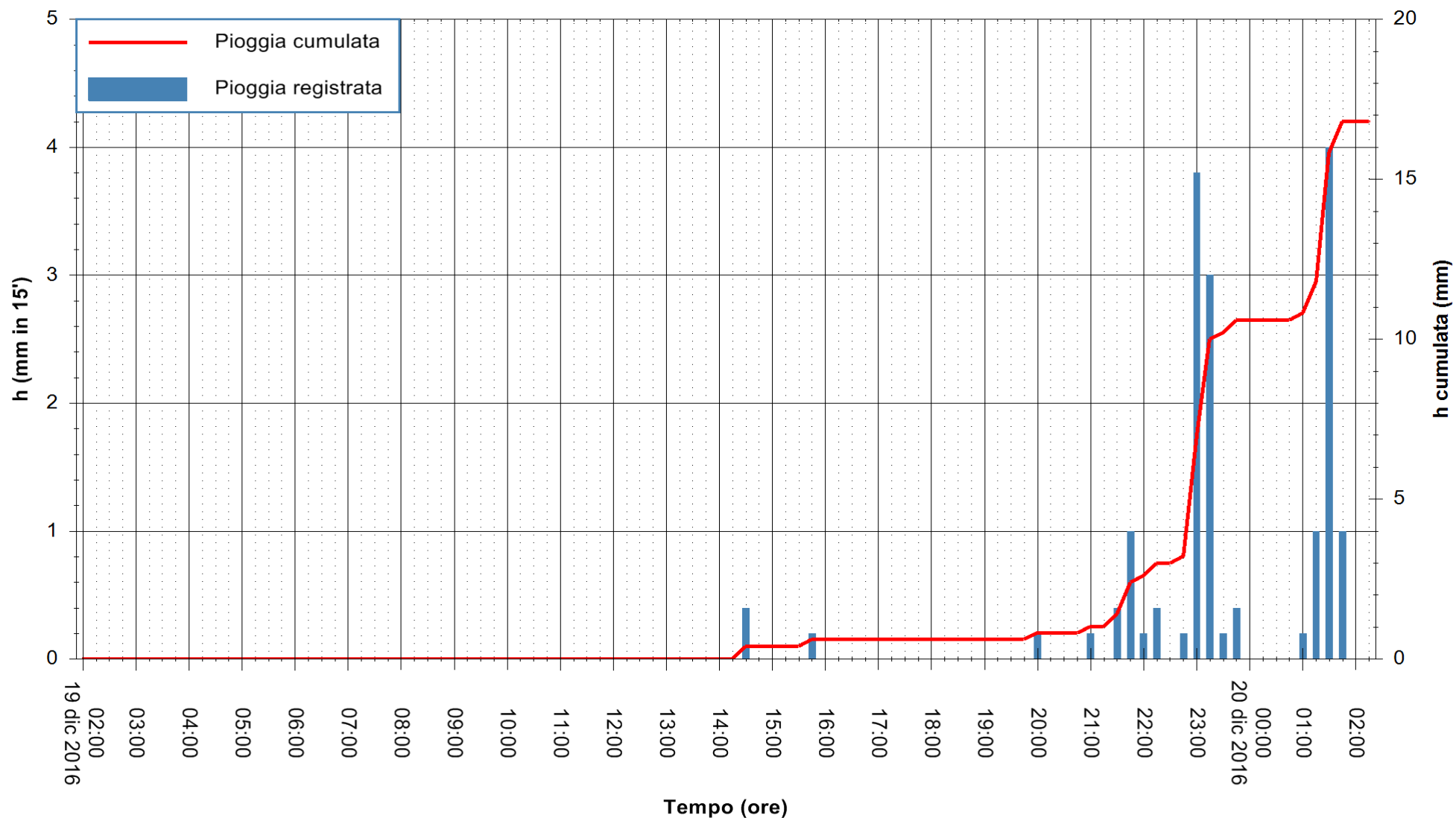
ARPAS
F.to il Dirigente Responsabile
Dott. Giuseppe Bianco

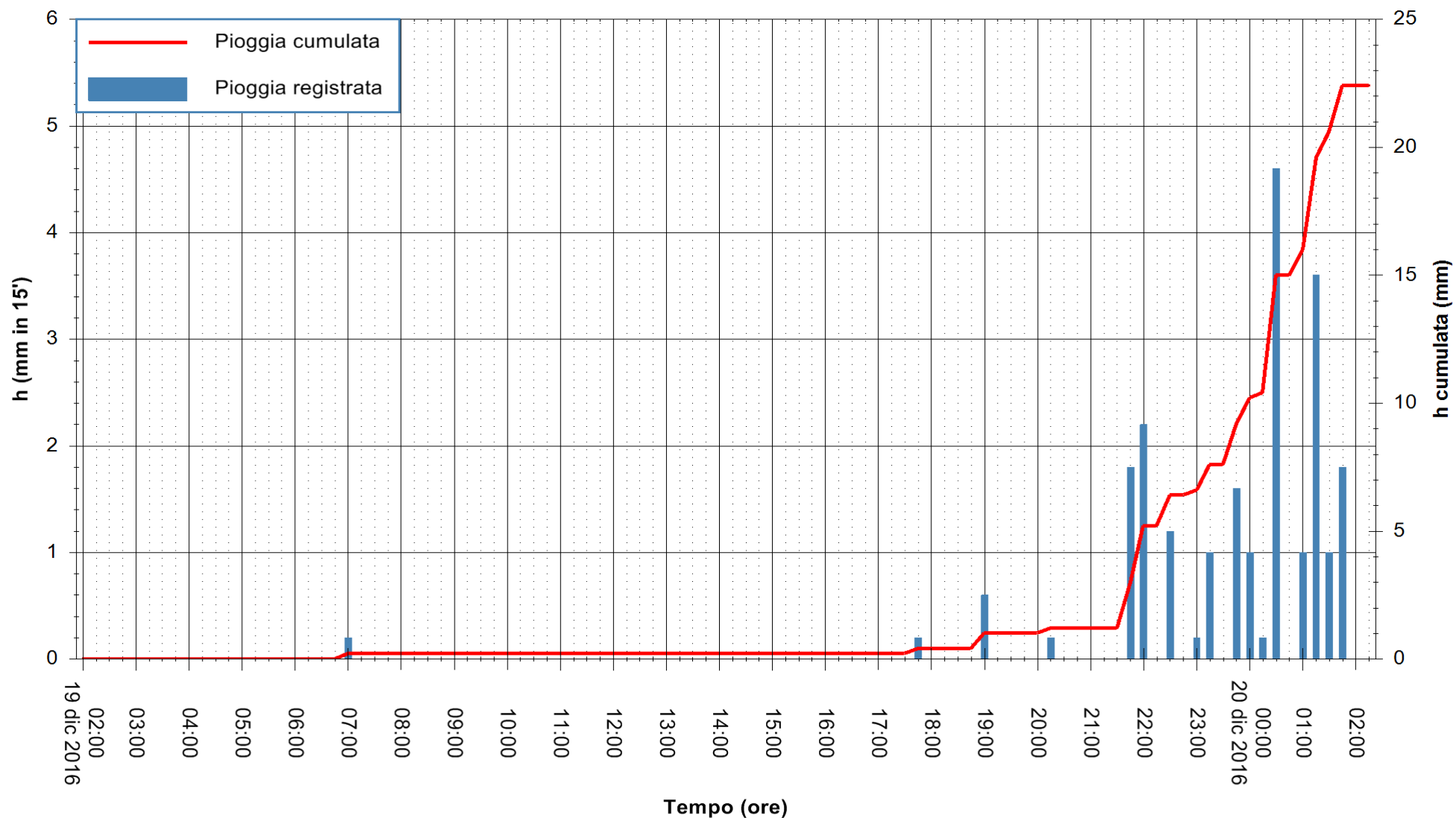
REGIONE AUTÒNOMA DE SARDIGNA
REGIONE AUTONOMA DELLA SARDEGNA

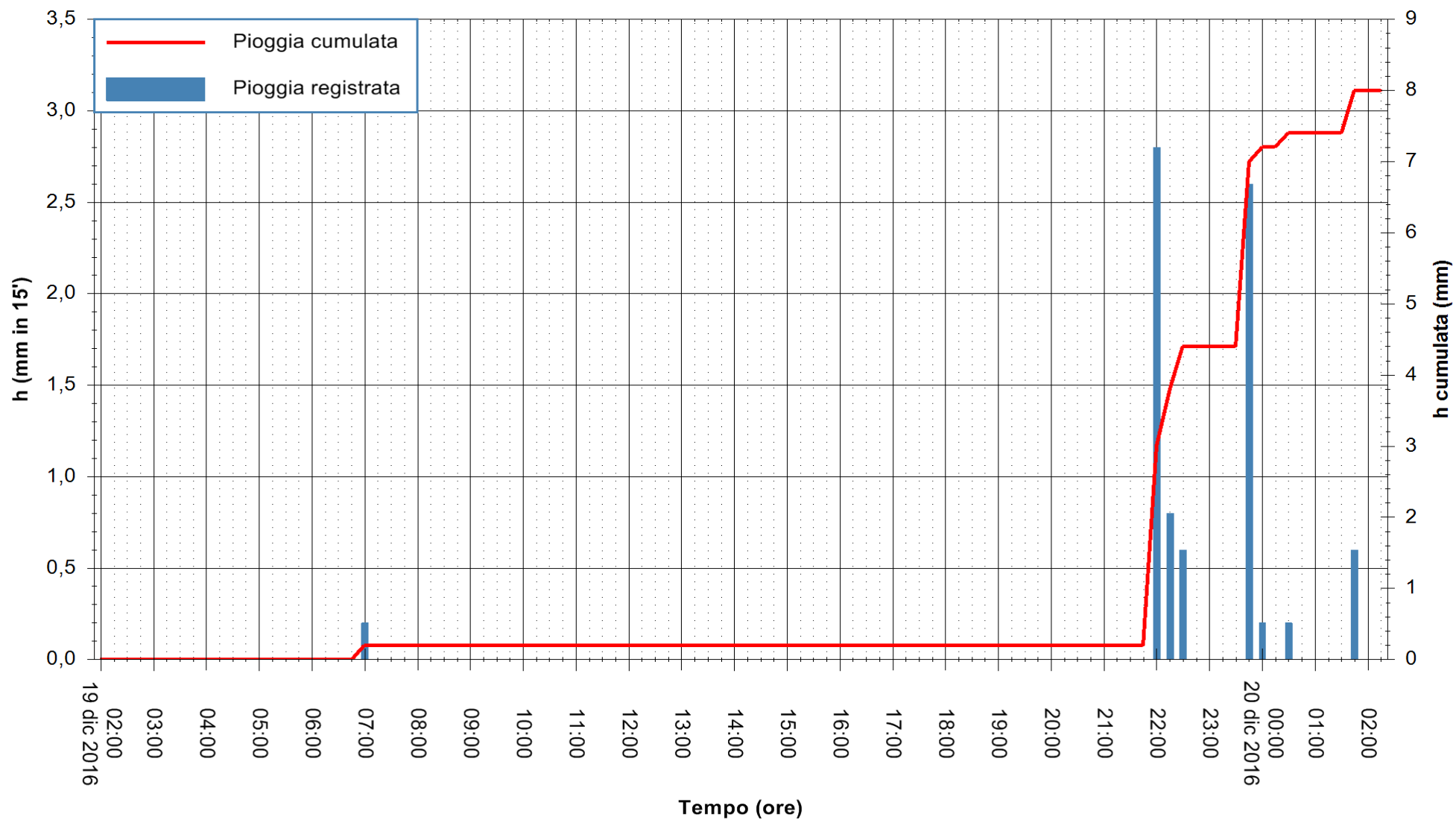


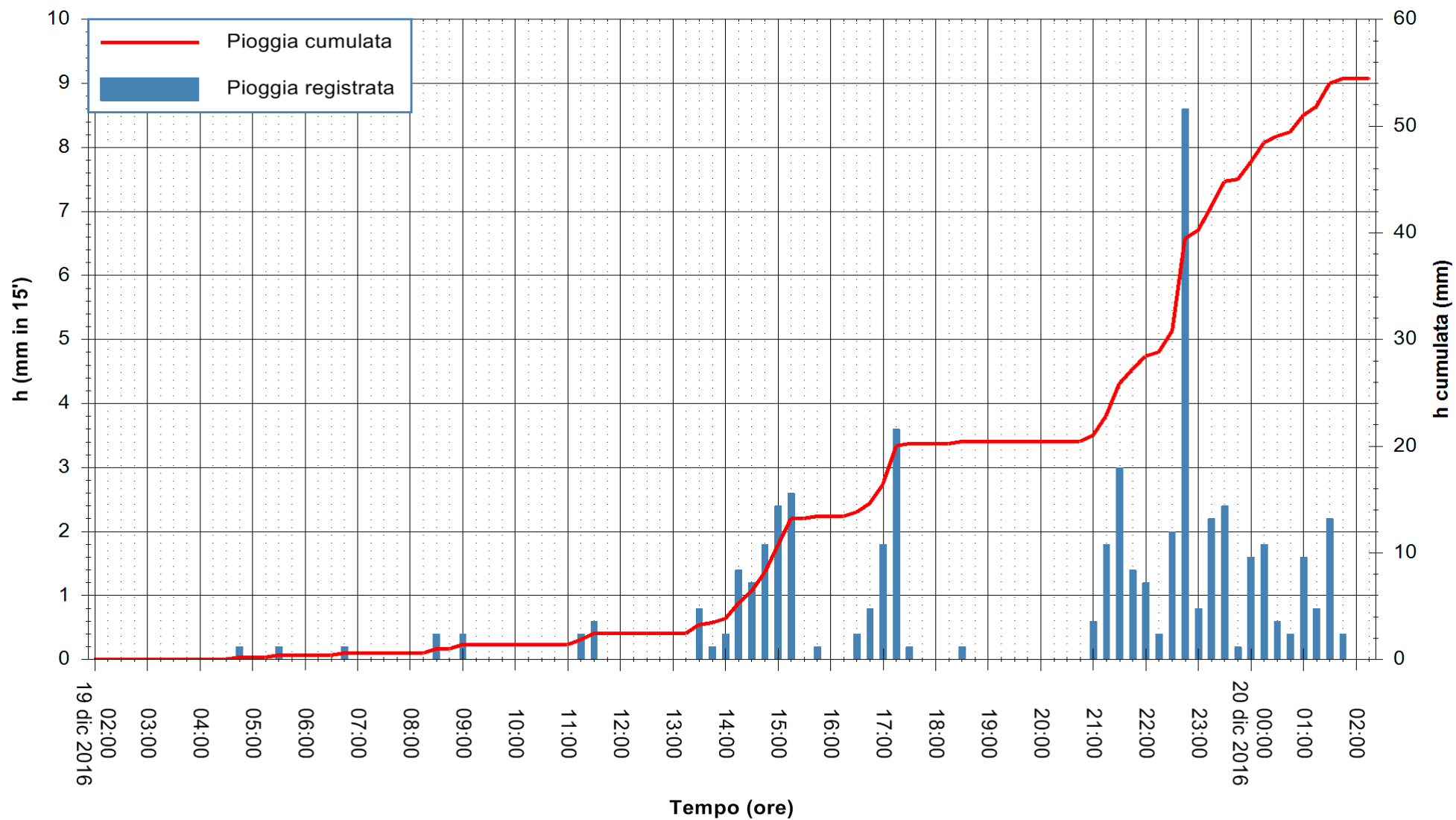


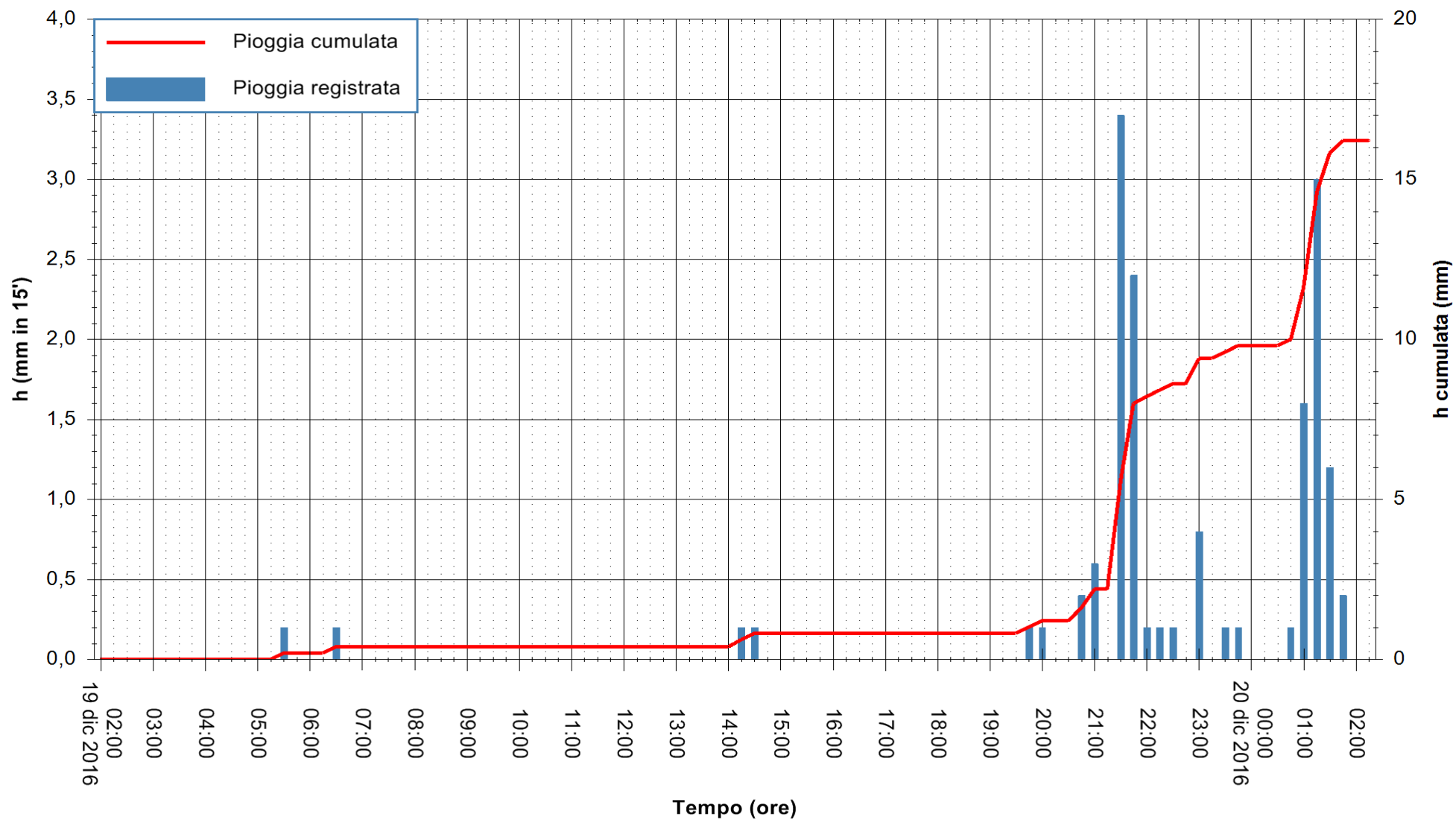


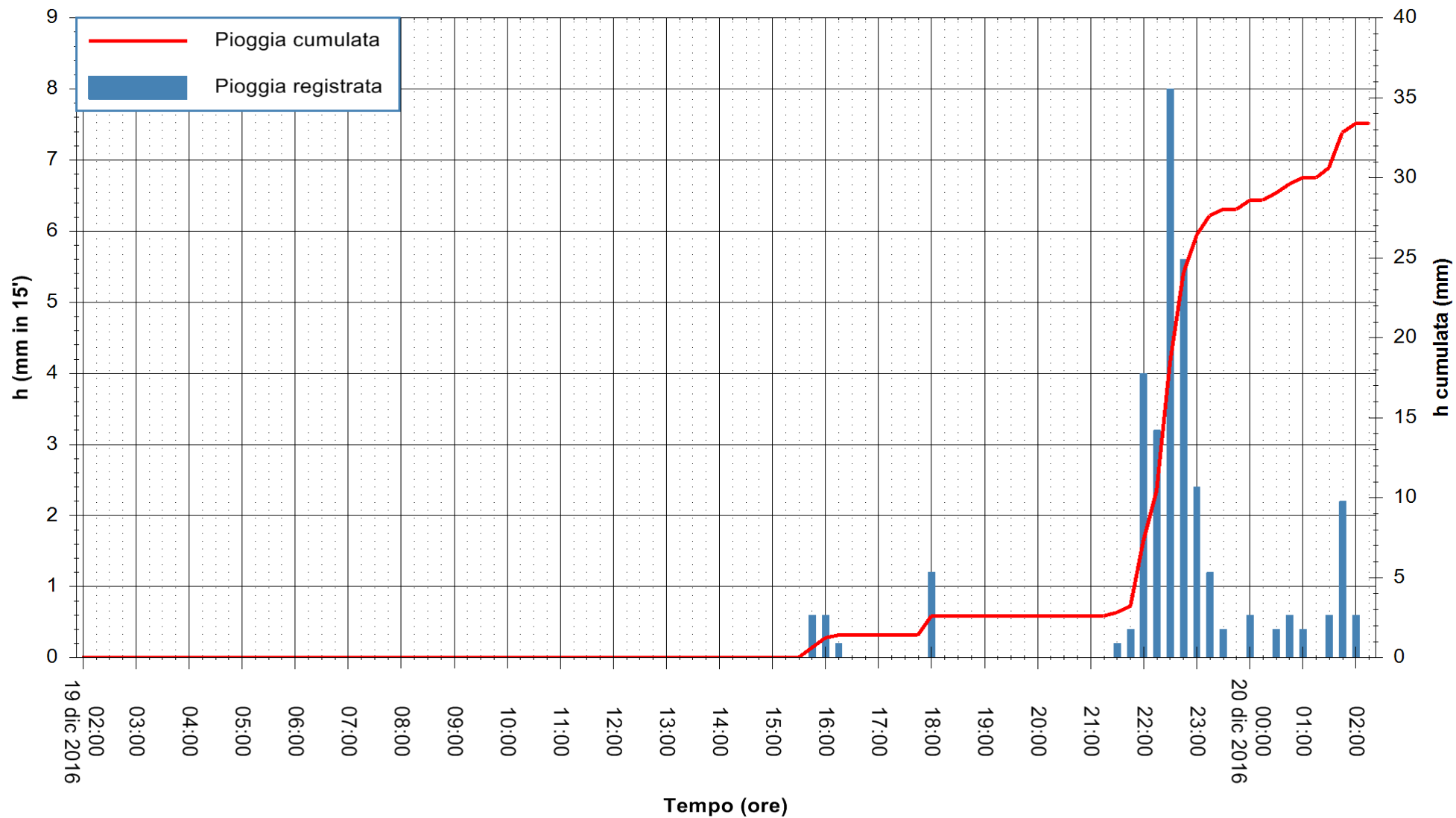


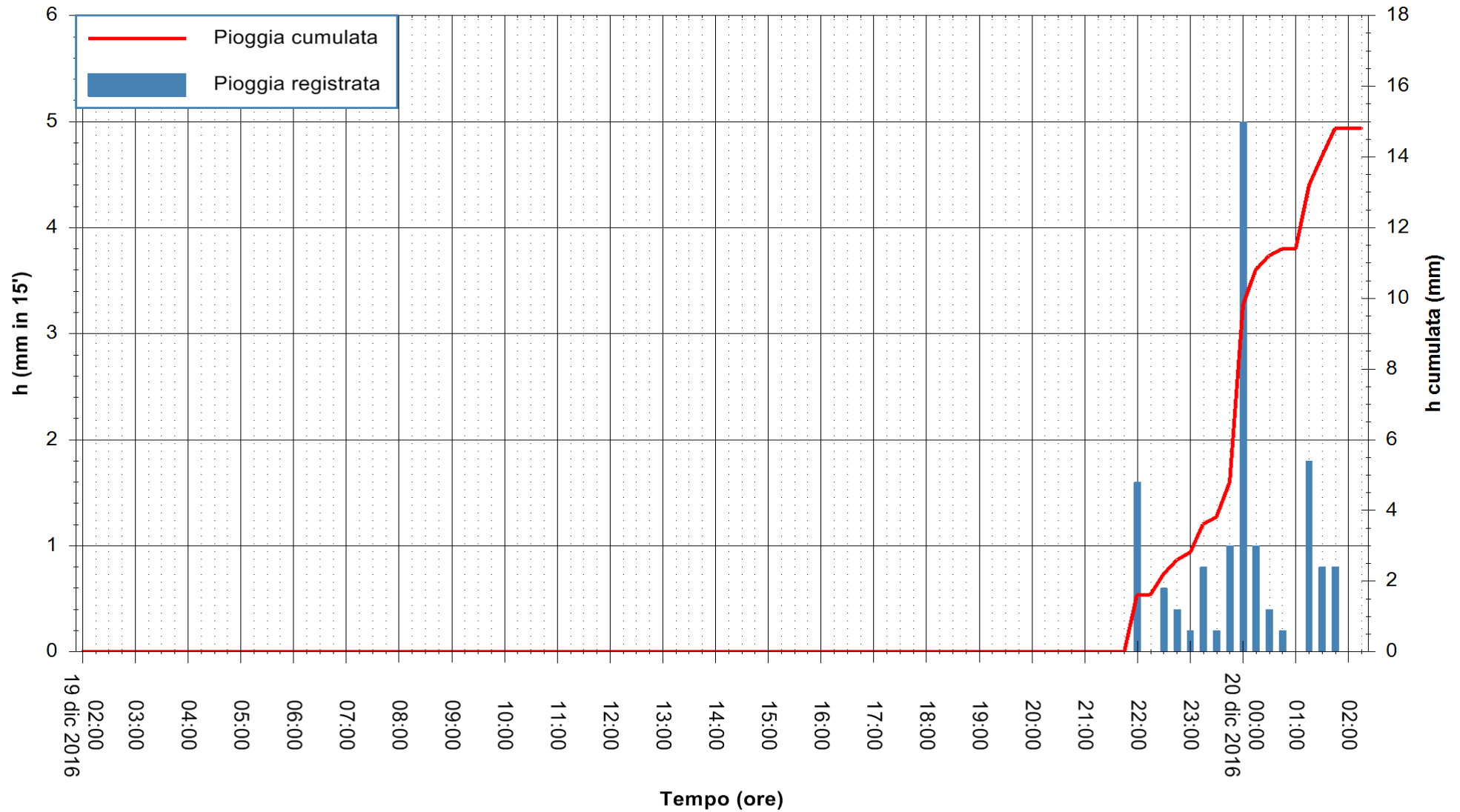


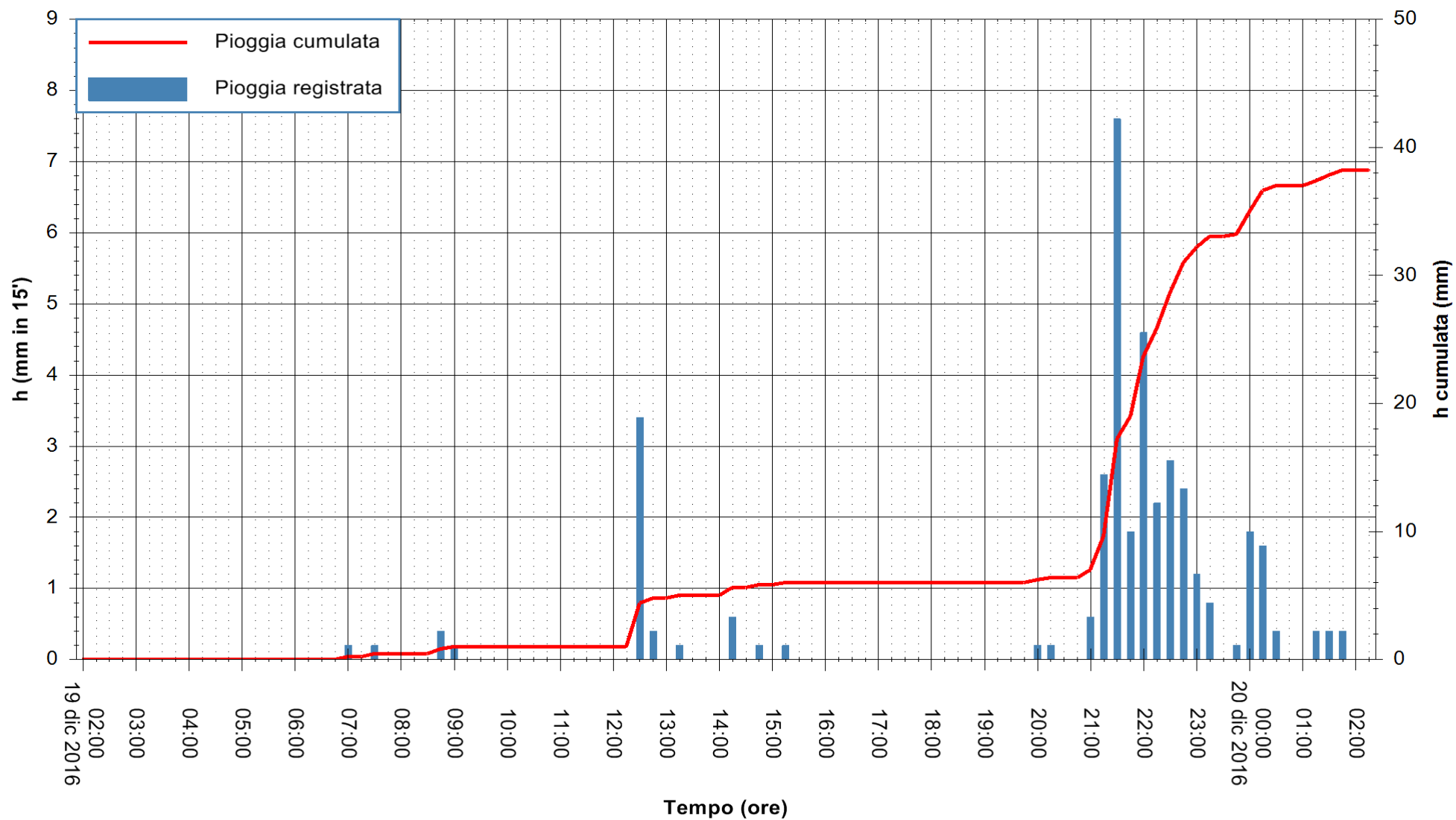


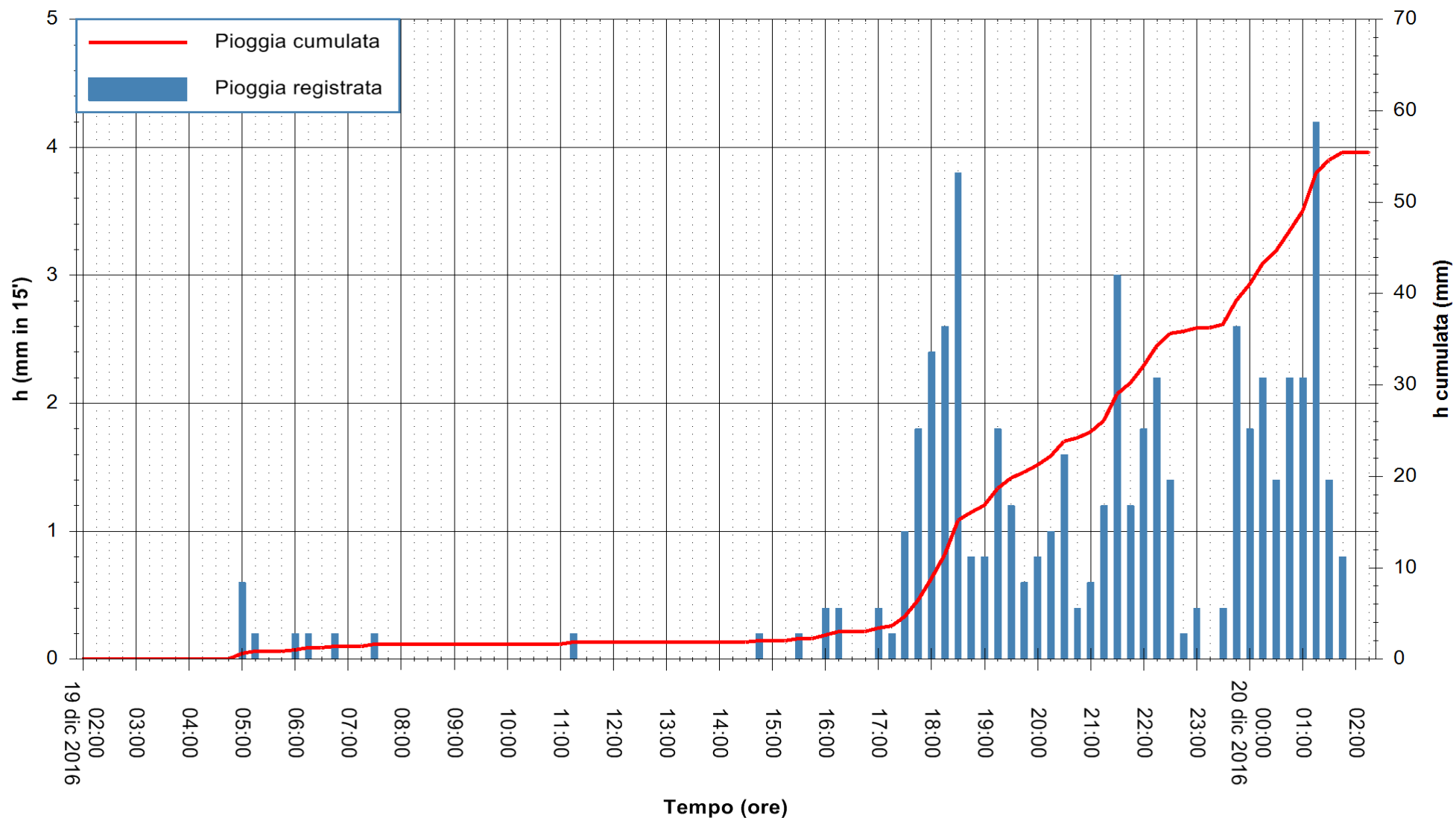


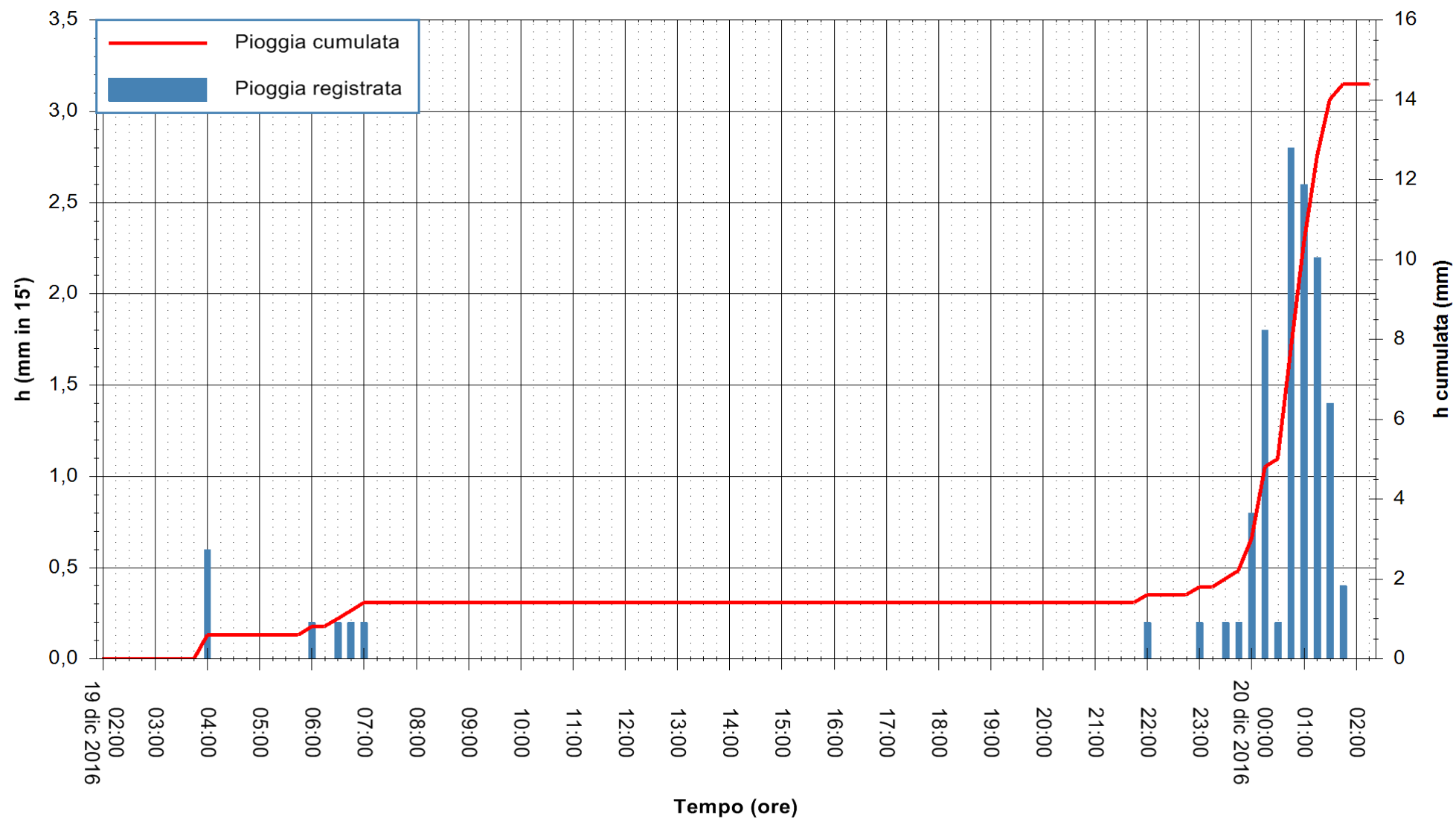


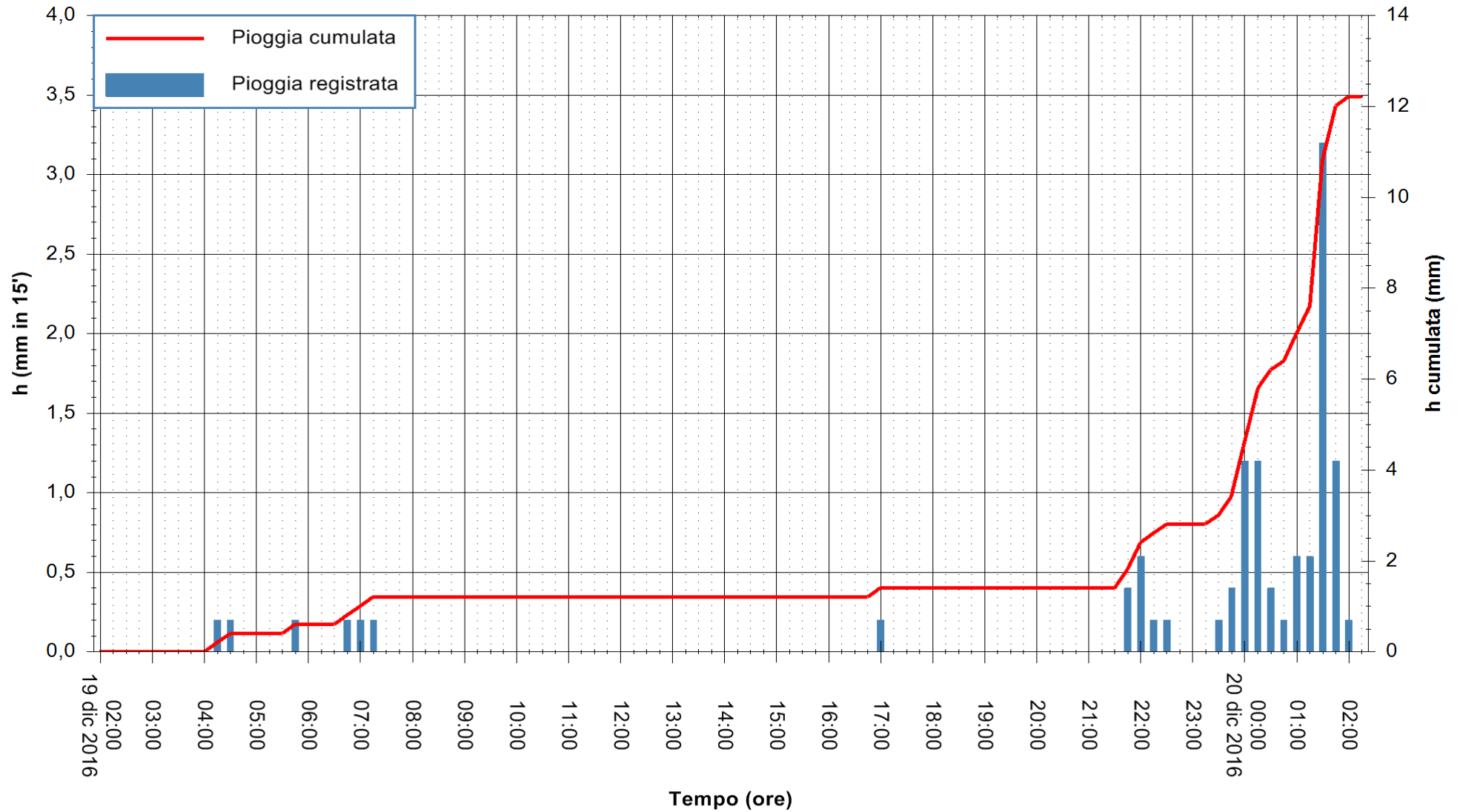










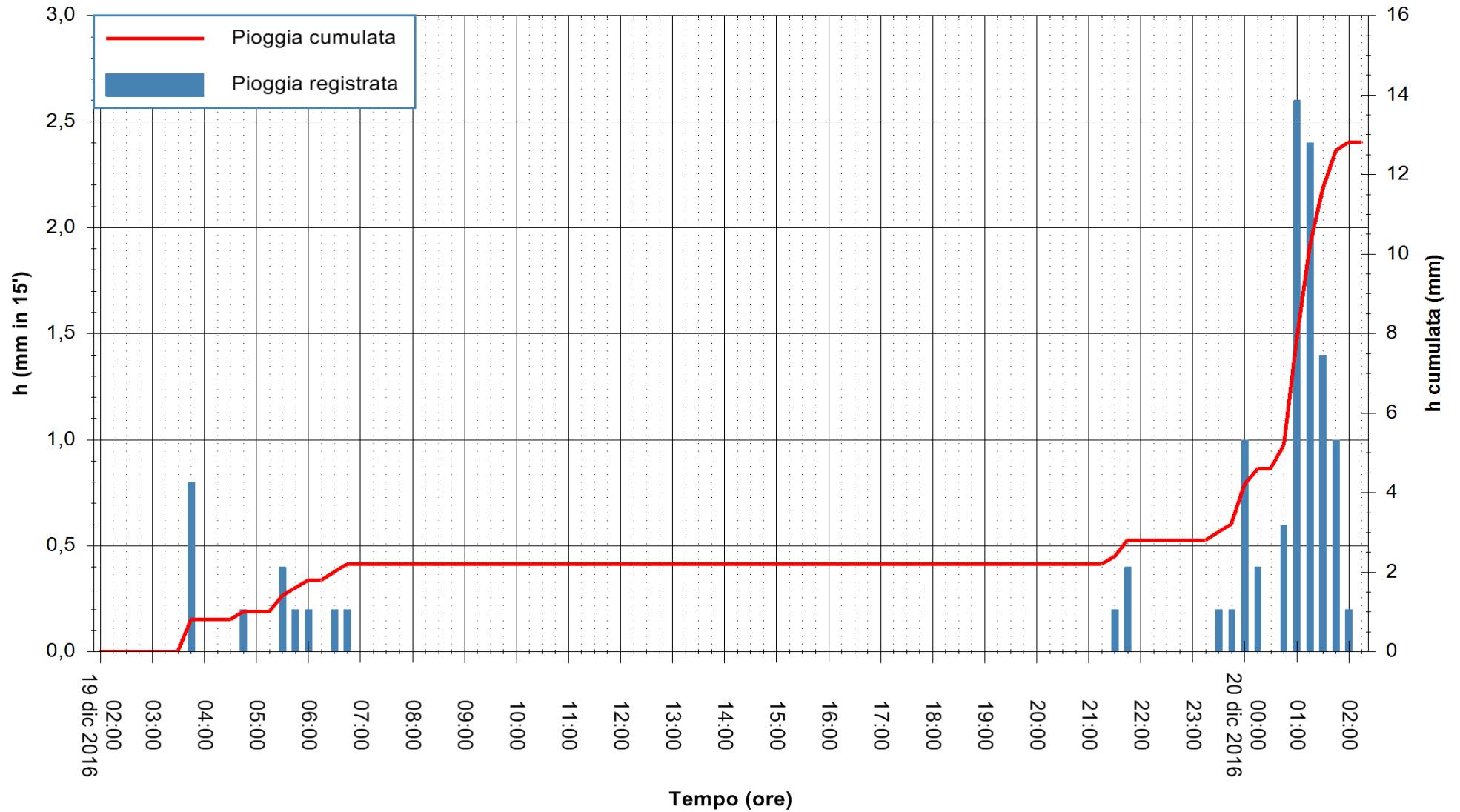


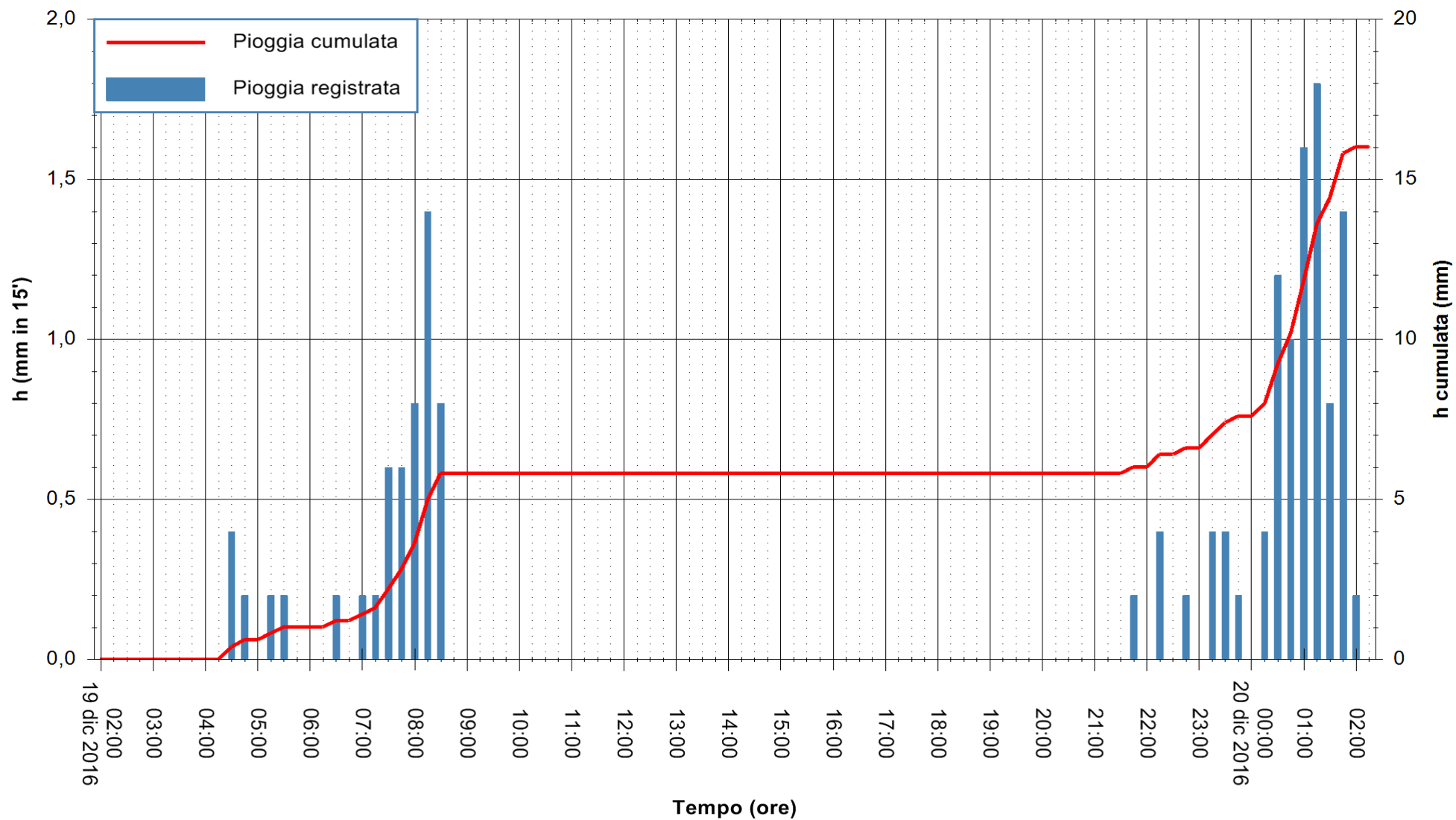
Stazione pluviometrica Pianu
Area PIANU 15
Pioggia registrata nelle ultime 24 ore
Consultazione alle ore 03:51 del 20/12/2016

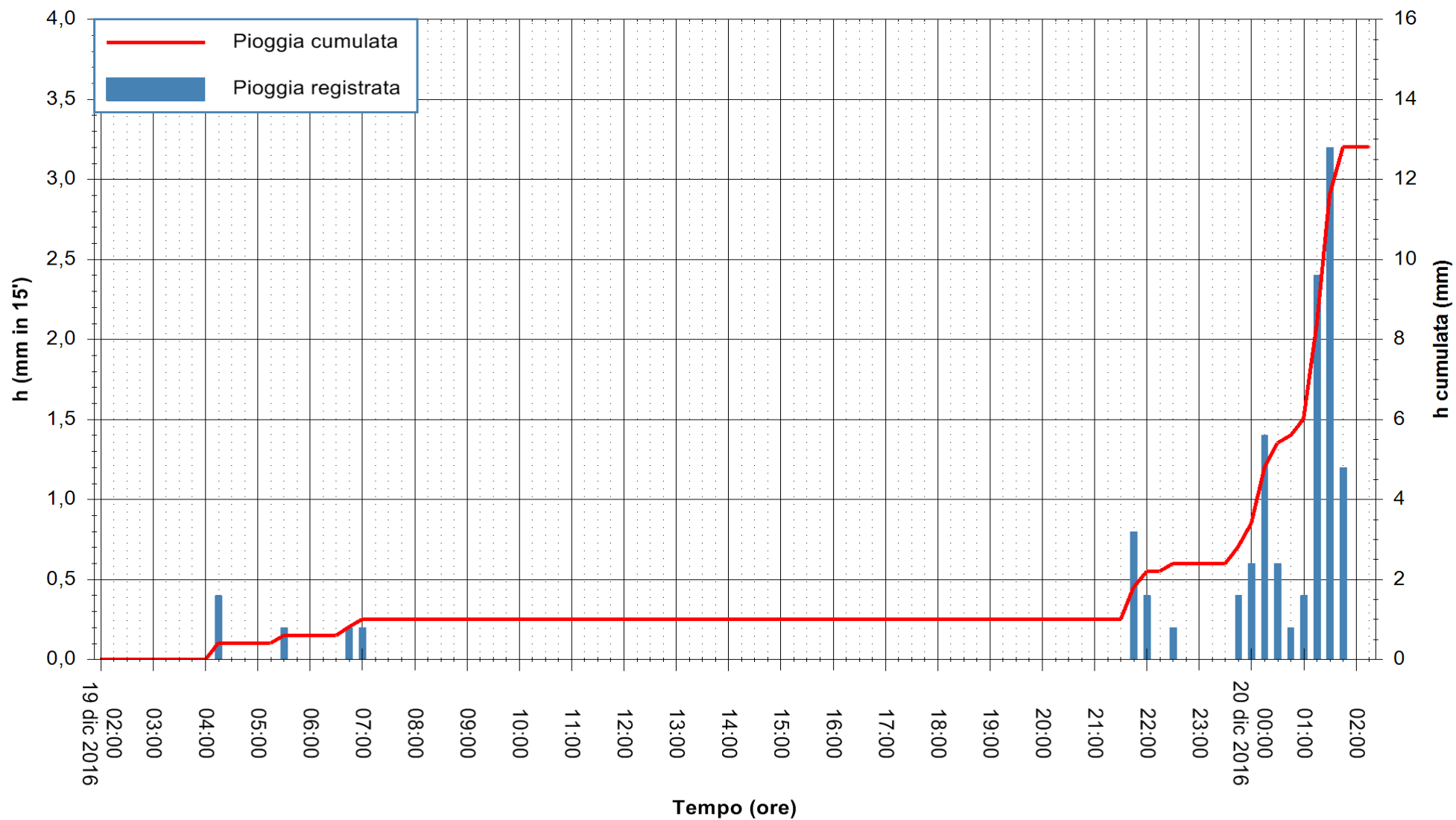


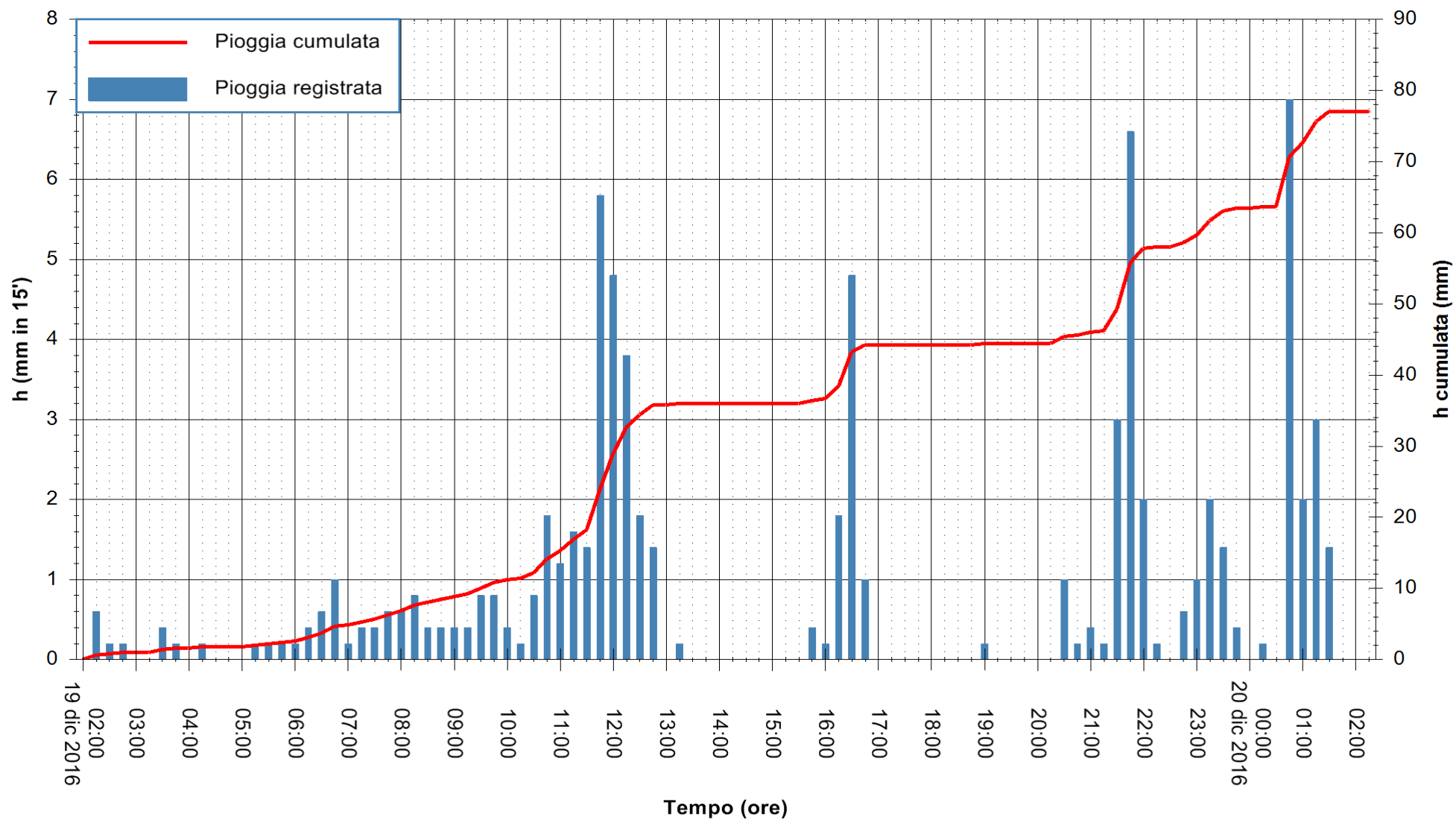
ARPAS
F.to il Dirigente Responsabile
Dott. Giuseppe Bianco

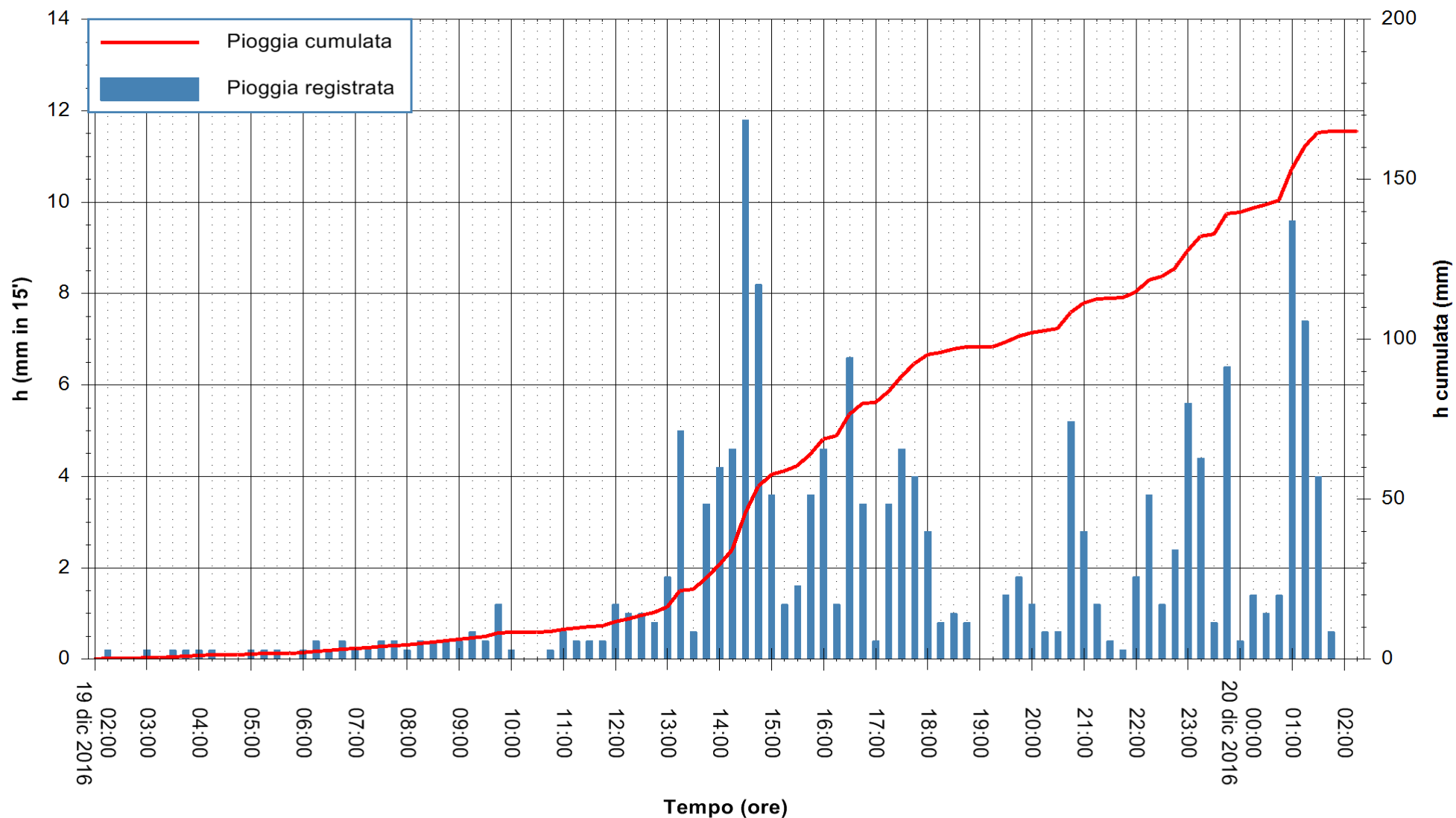
REGIONE AUTÒNOMA DE SARDIGNA
REGIONE AUTONOMA DELLA SARDEGNA

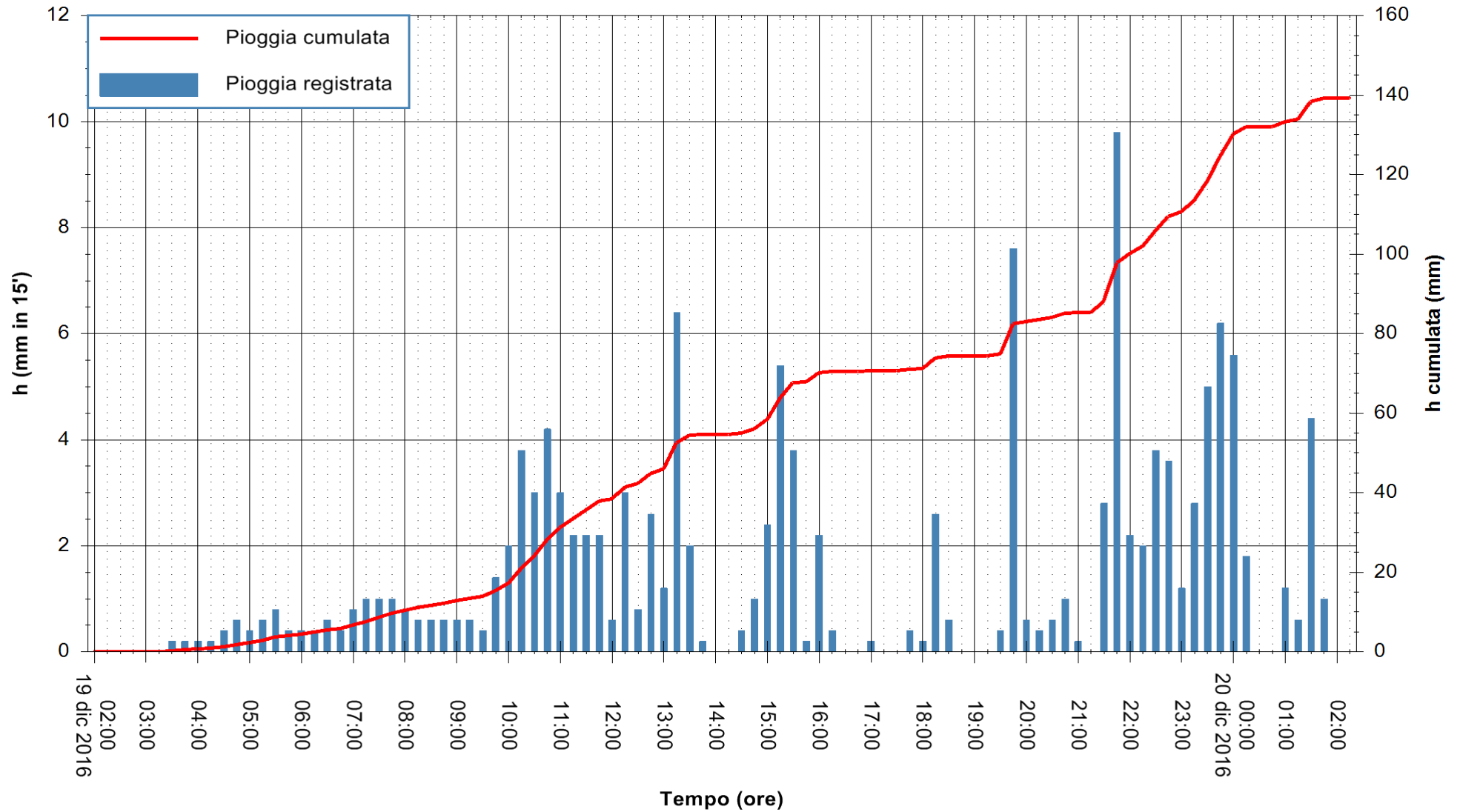


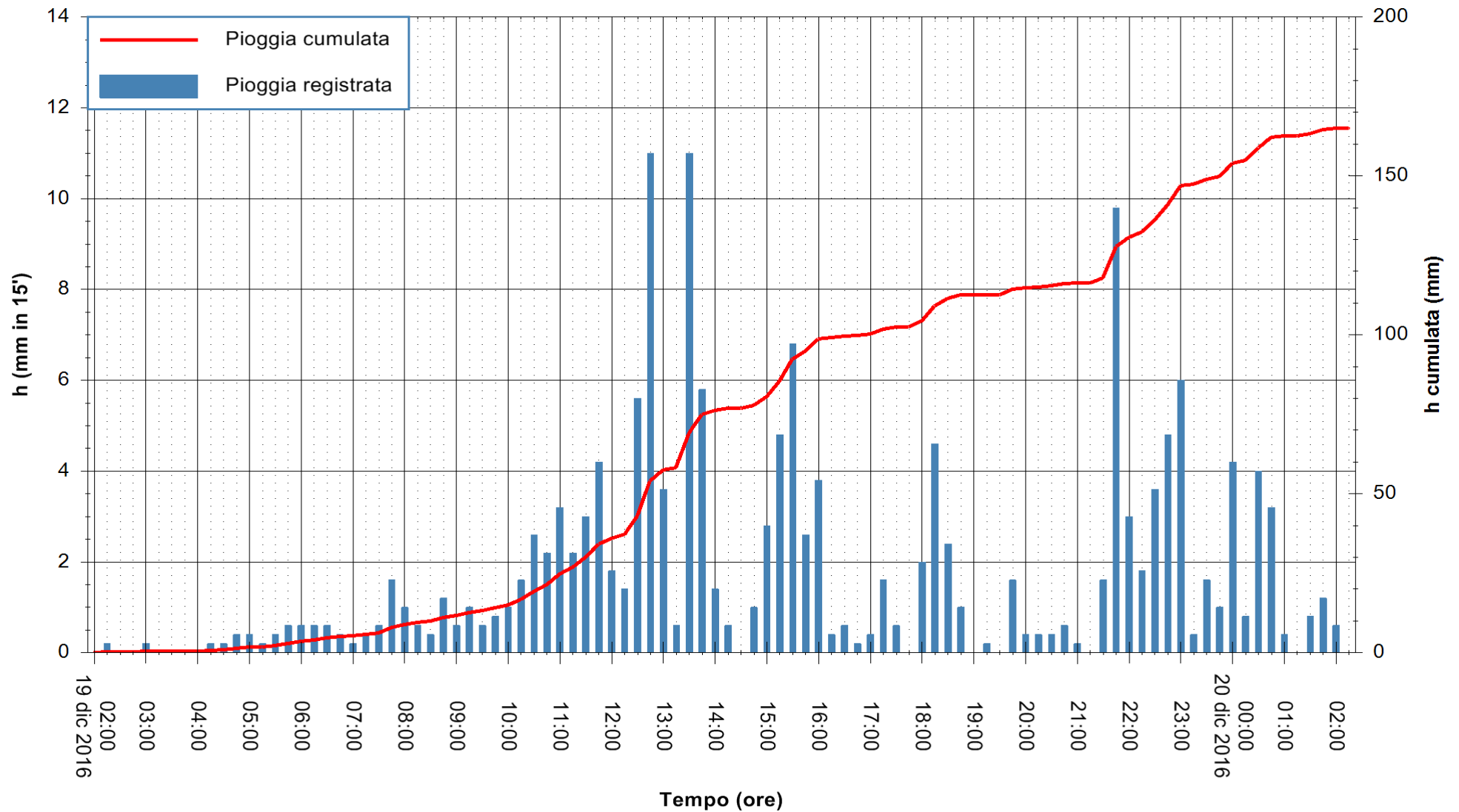


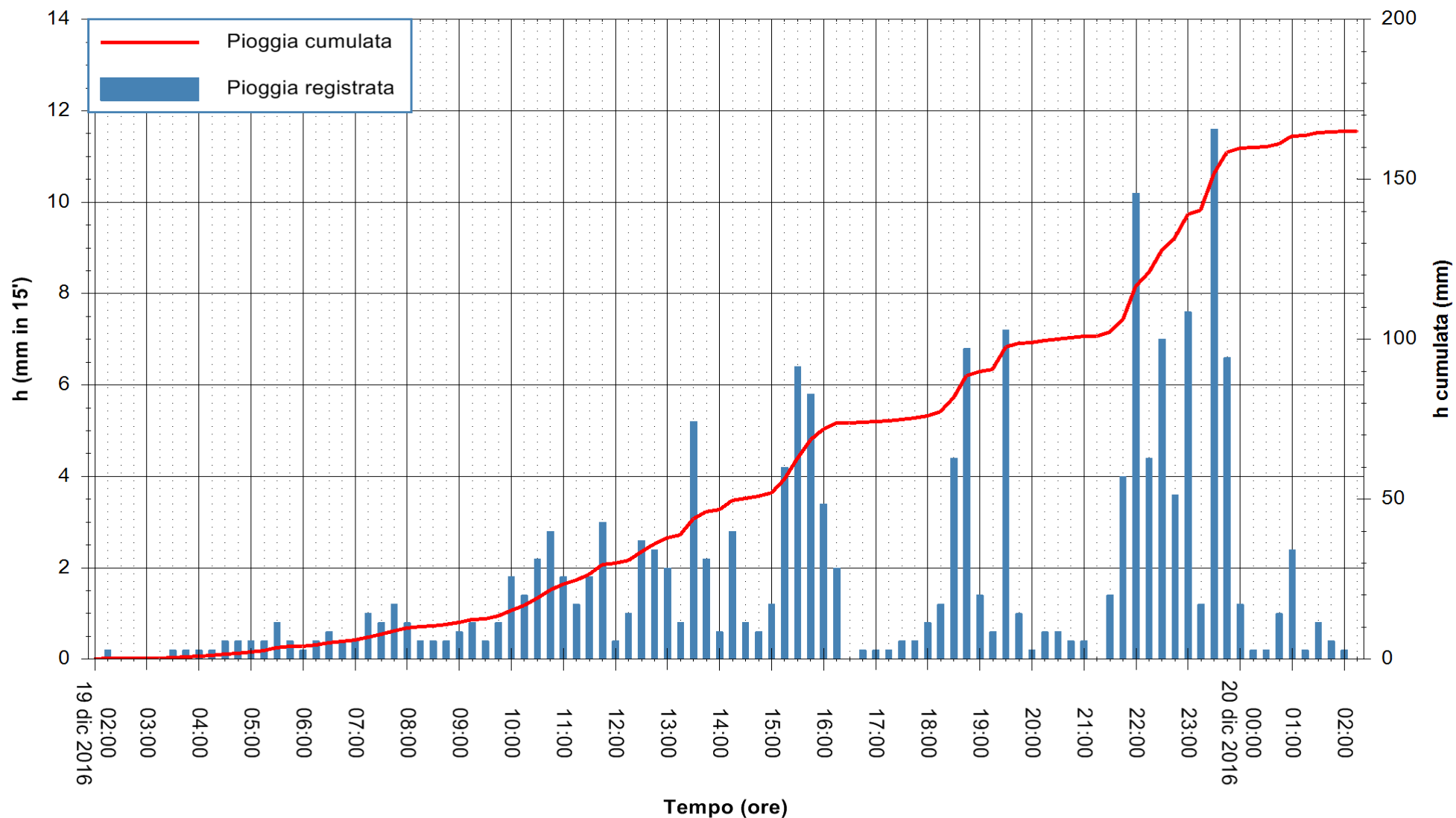


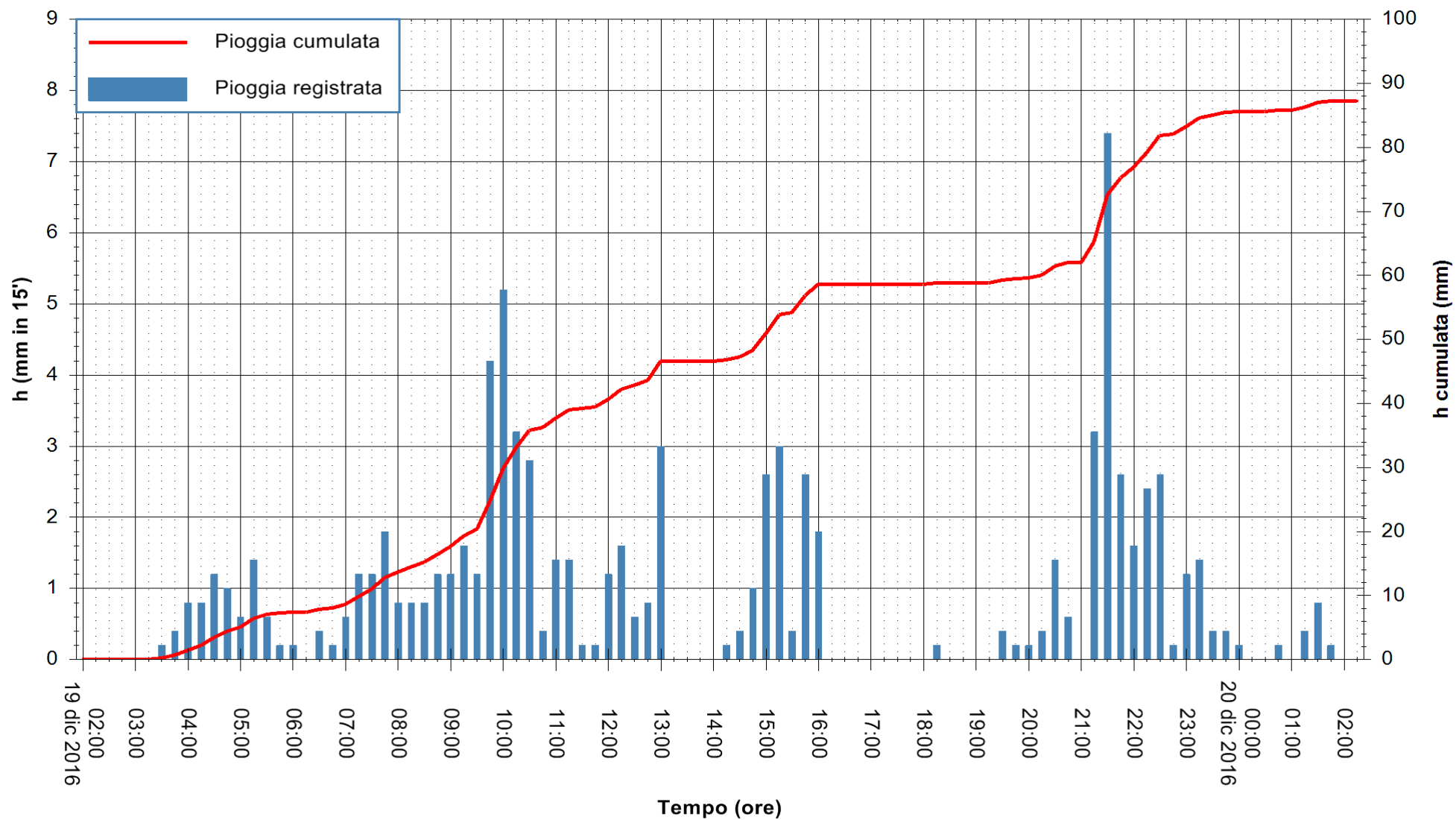


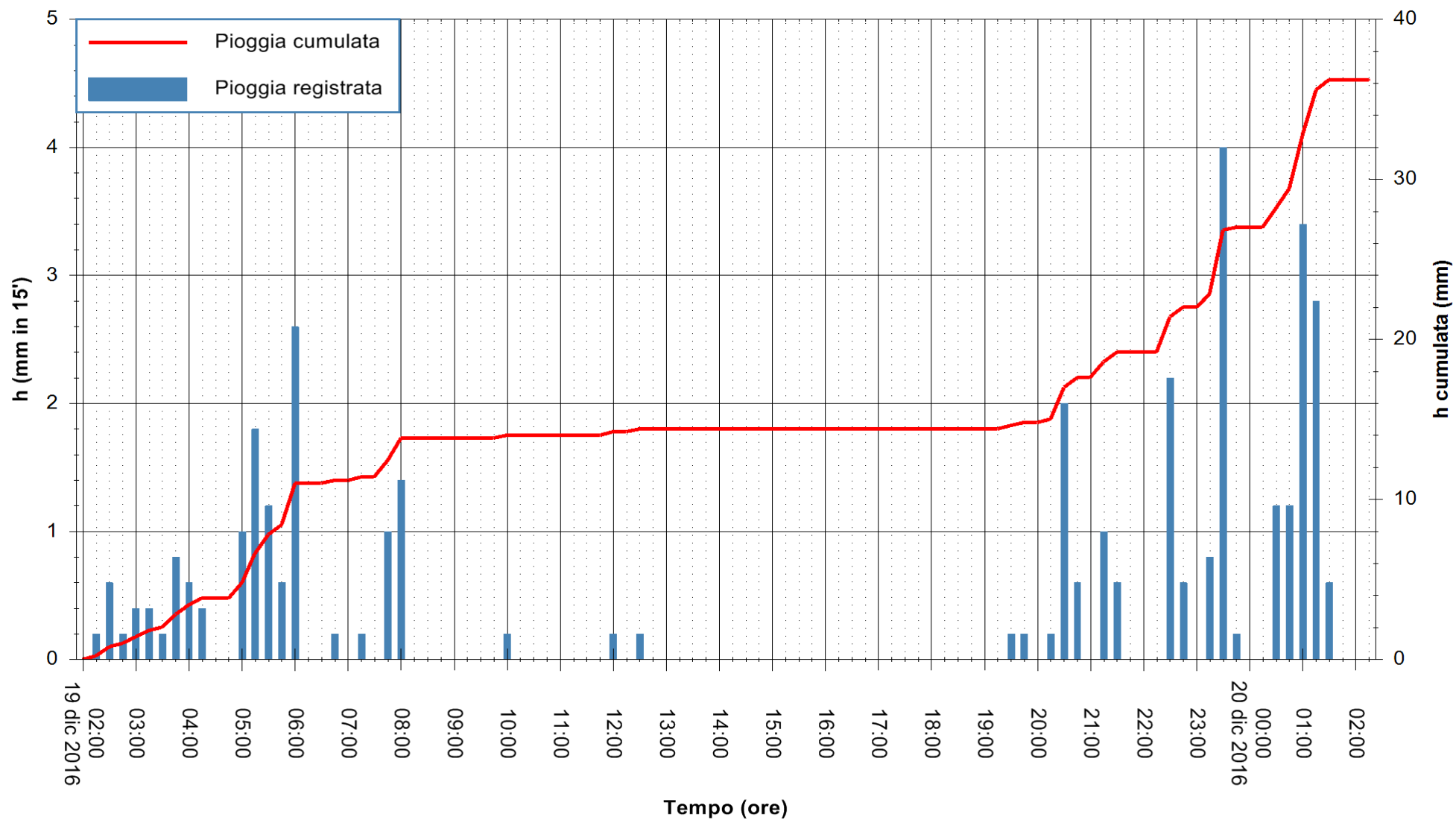


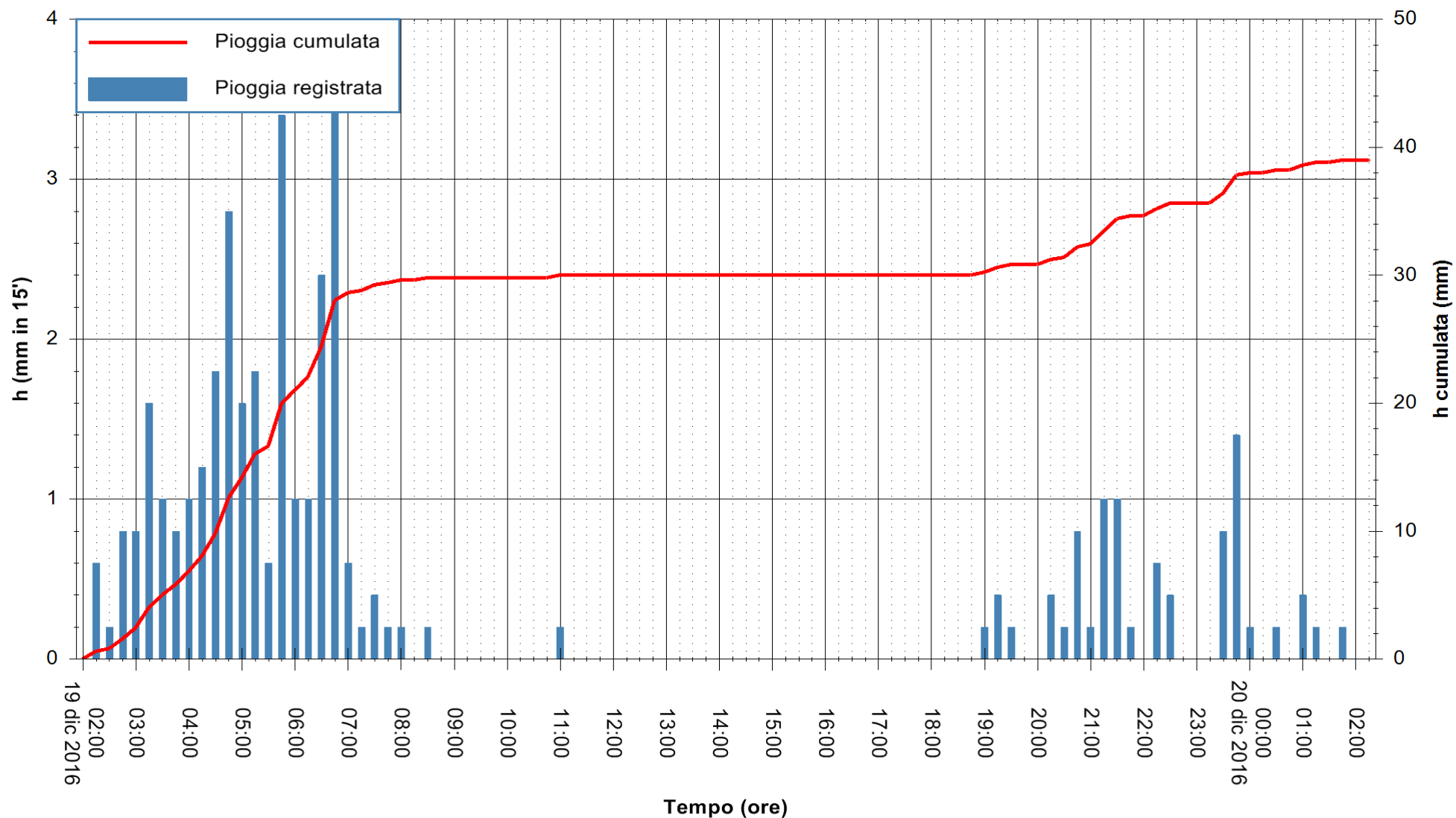


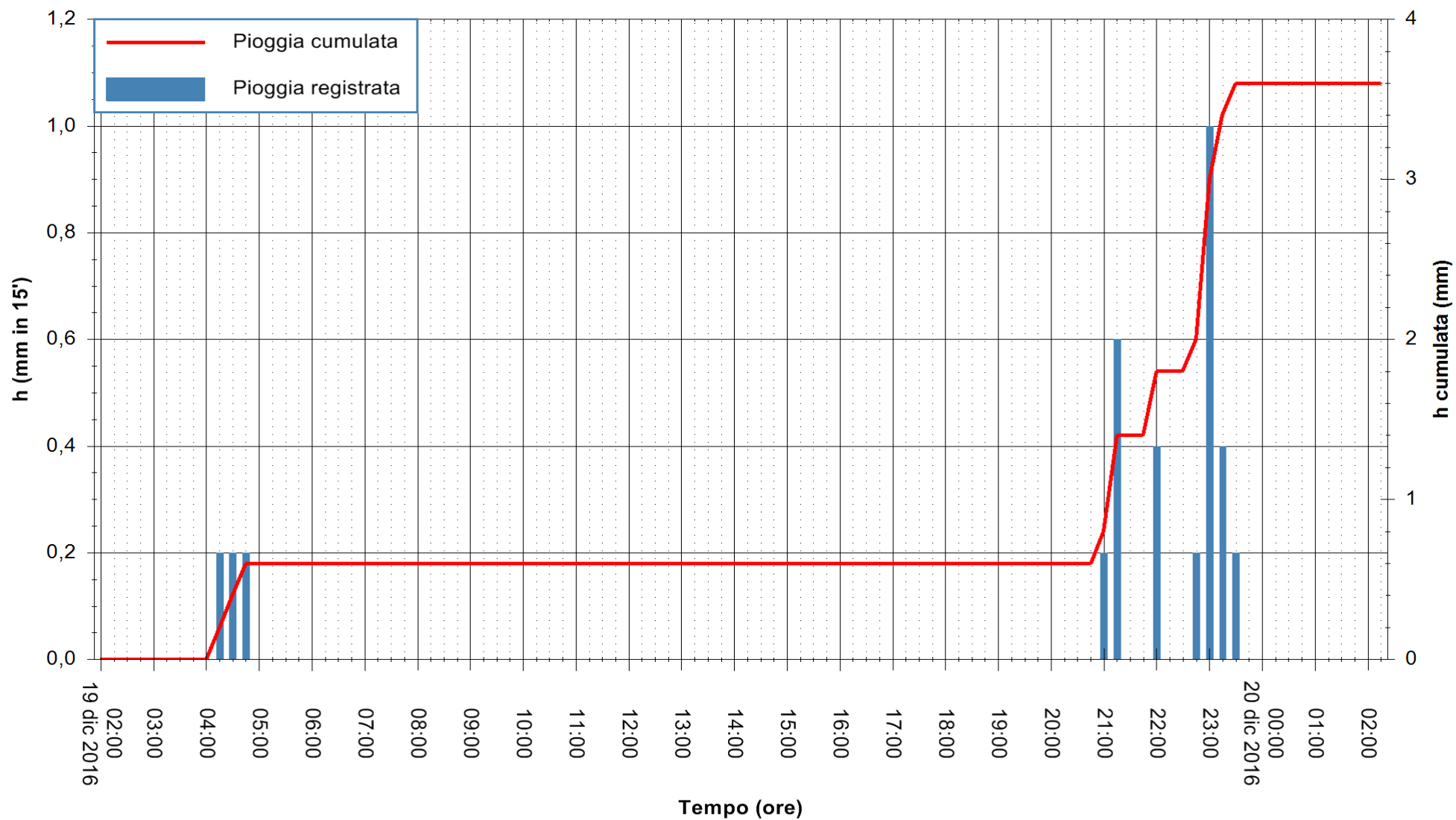


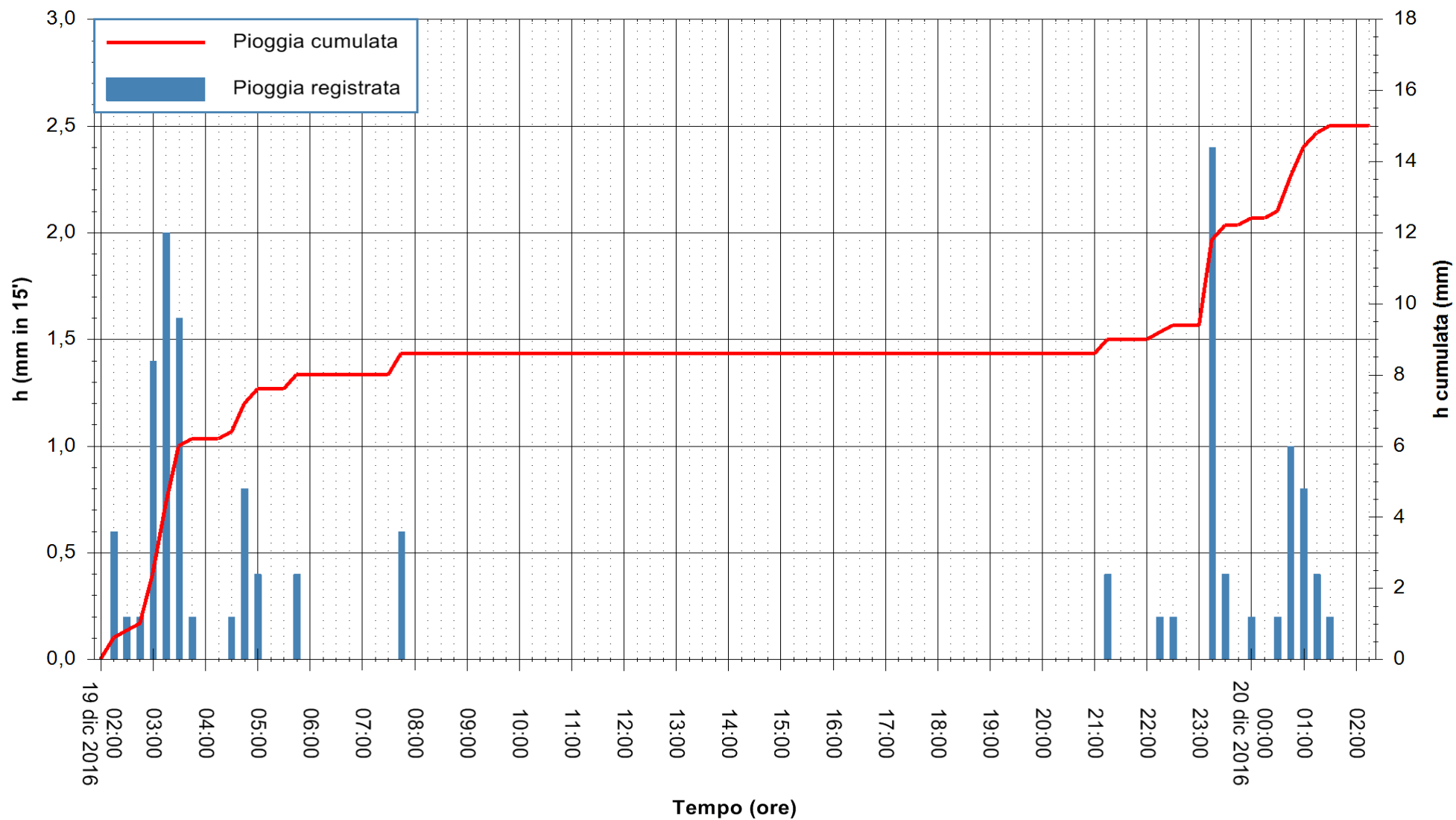










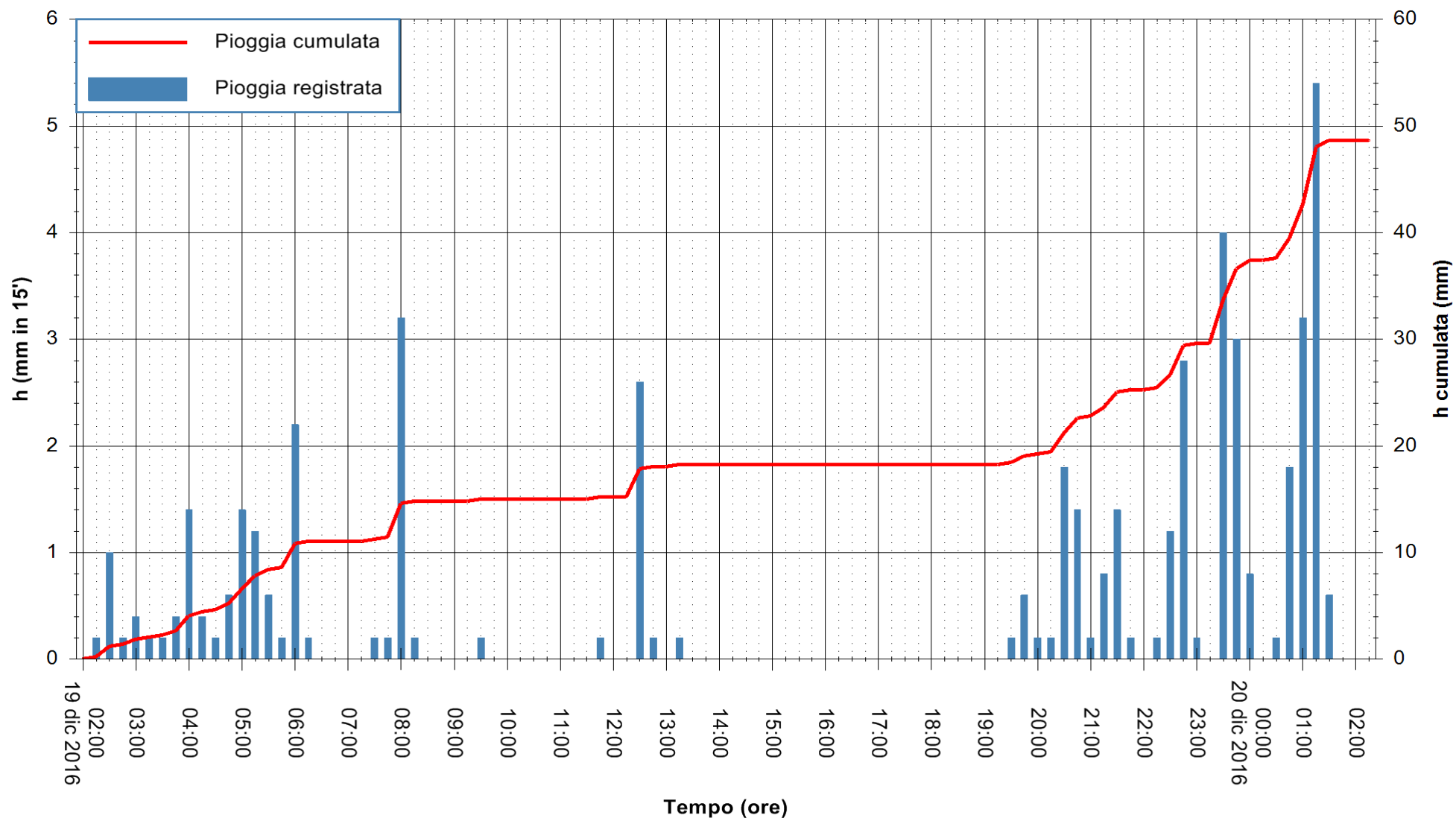


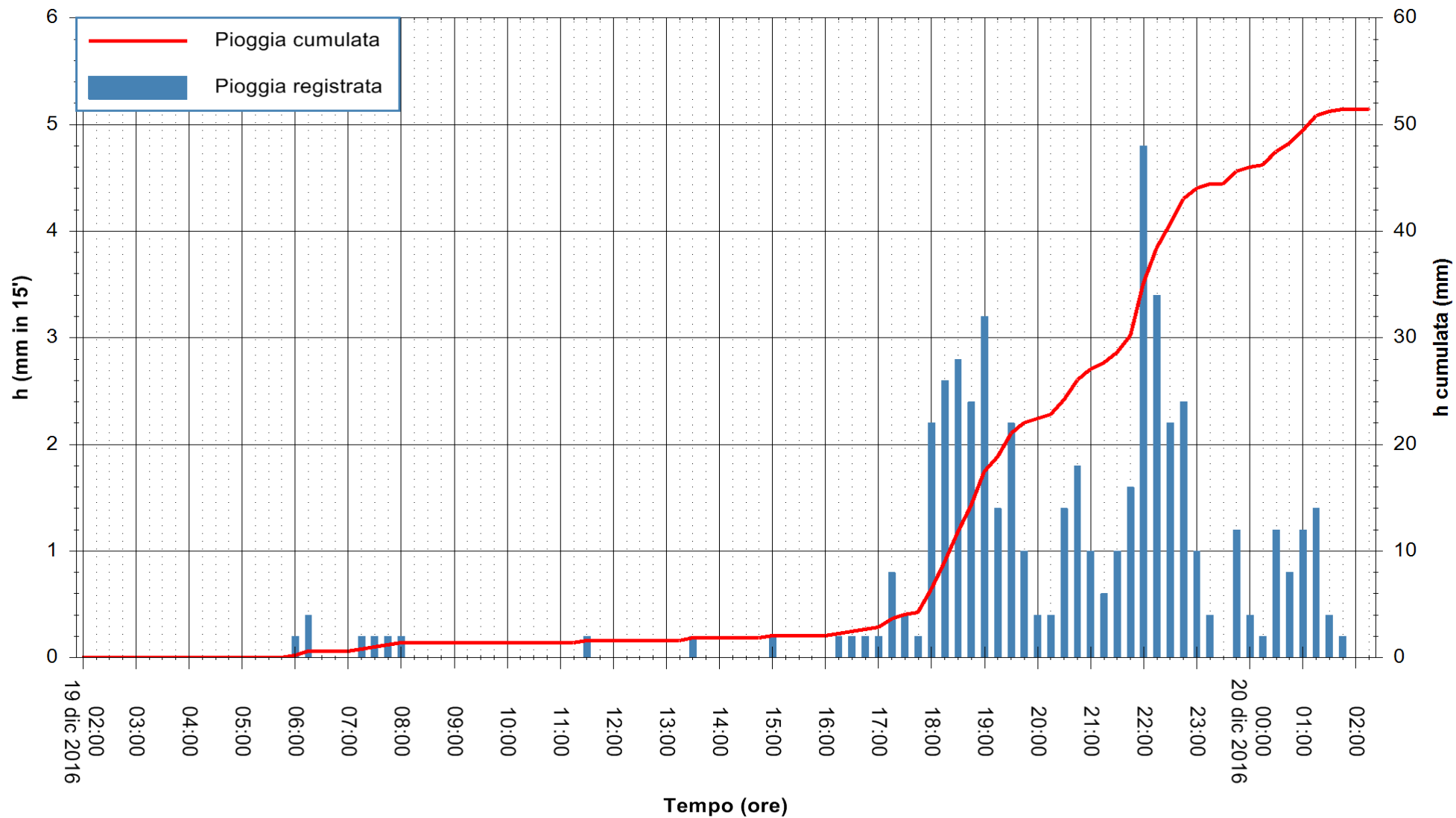
Stazione pluviometrica Santa Lucia di Capoterra
 Area S.LUCIA
 Pioggia registrata nelle ultime 24 ore
 Consultazione alle ore 03:51 del 20/12/2016

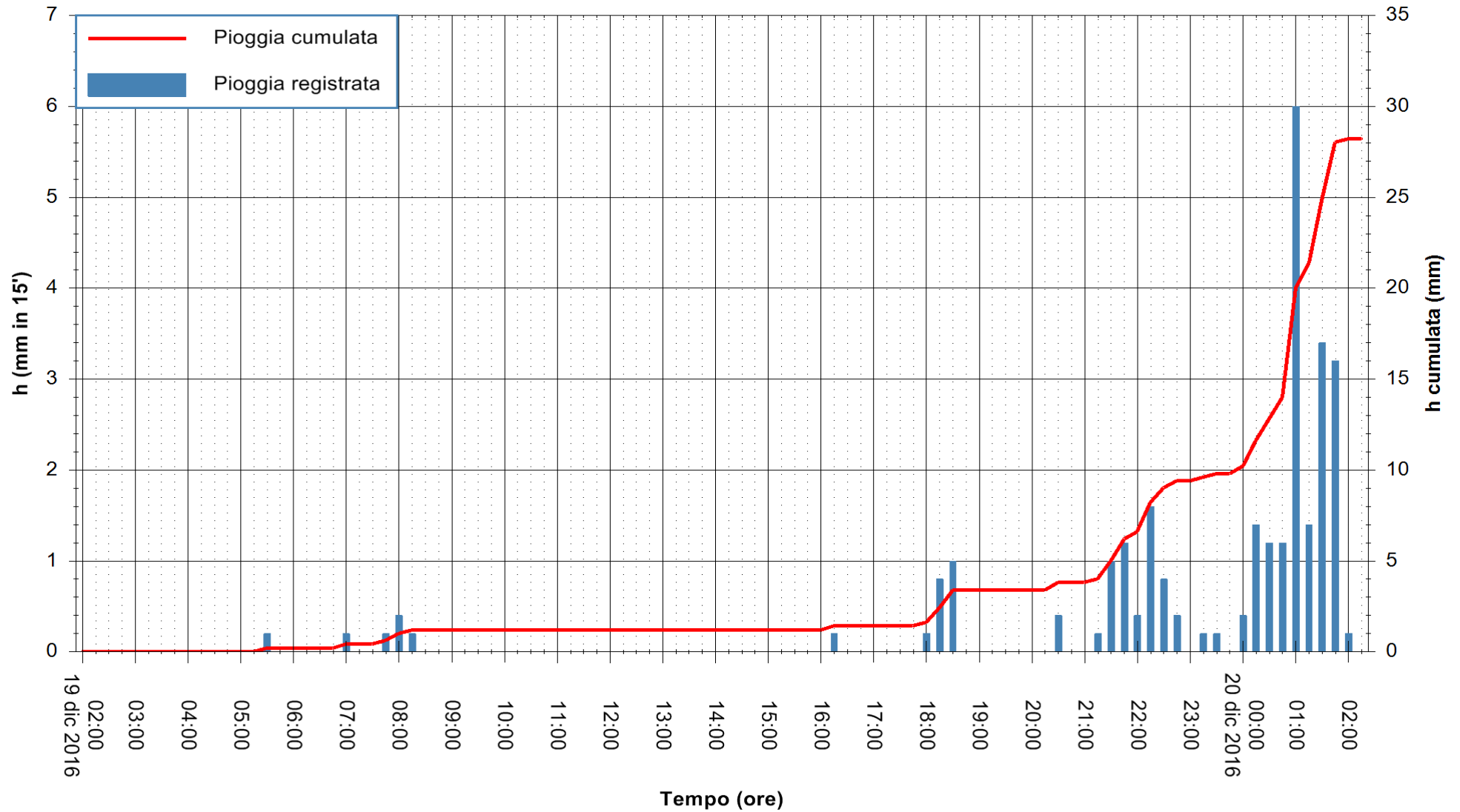


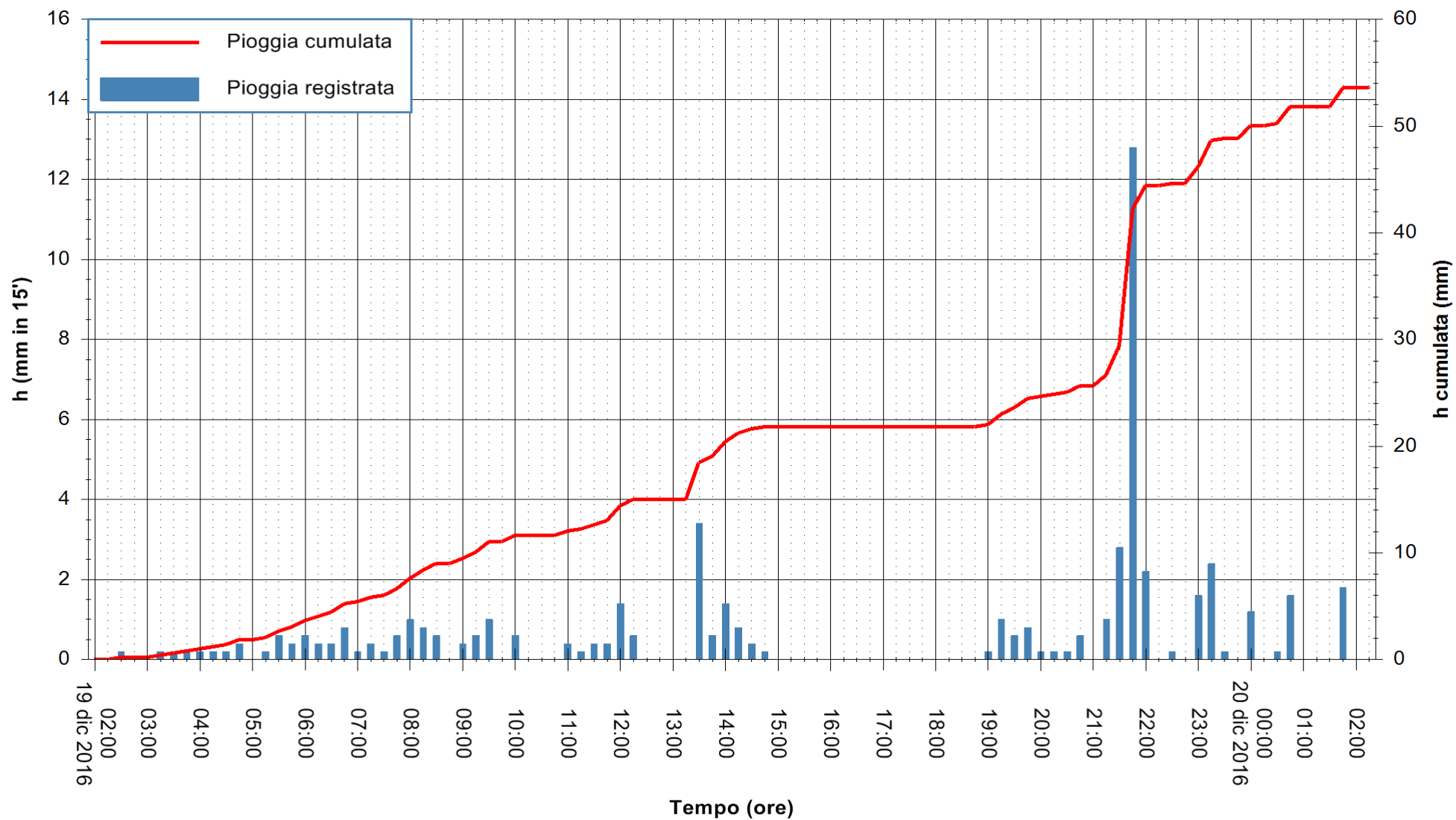
ARPAS
 F.to il Dirigente Responsabile
 Dott. Giuseppe Bianco

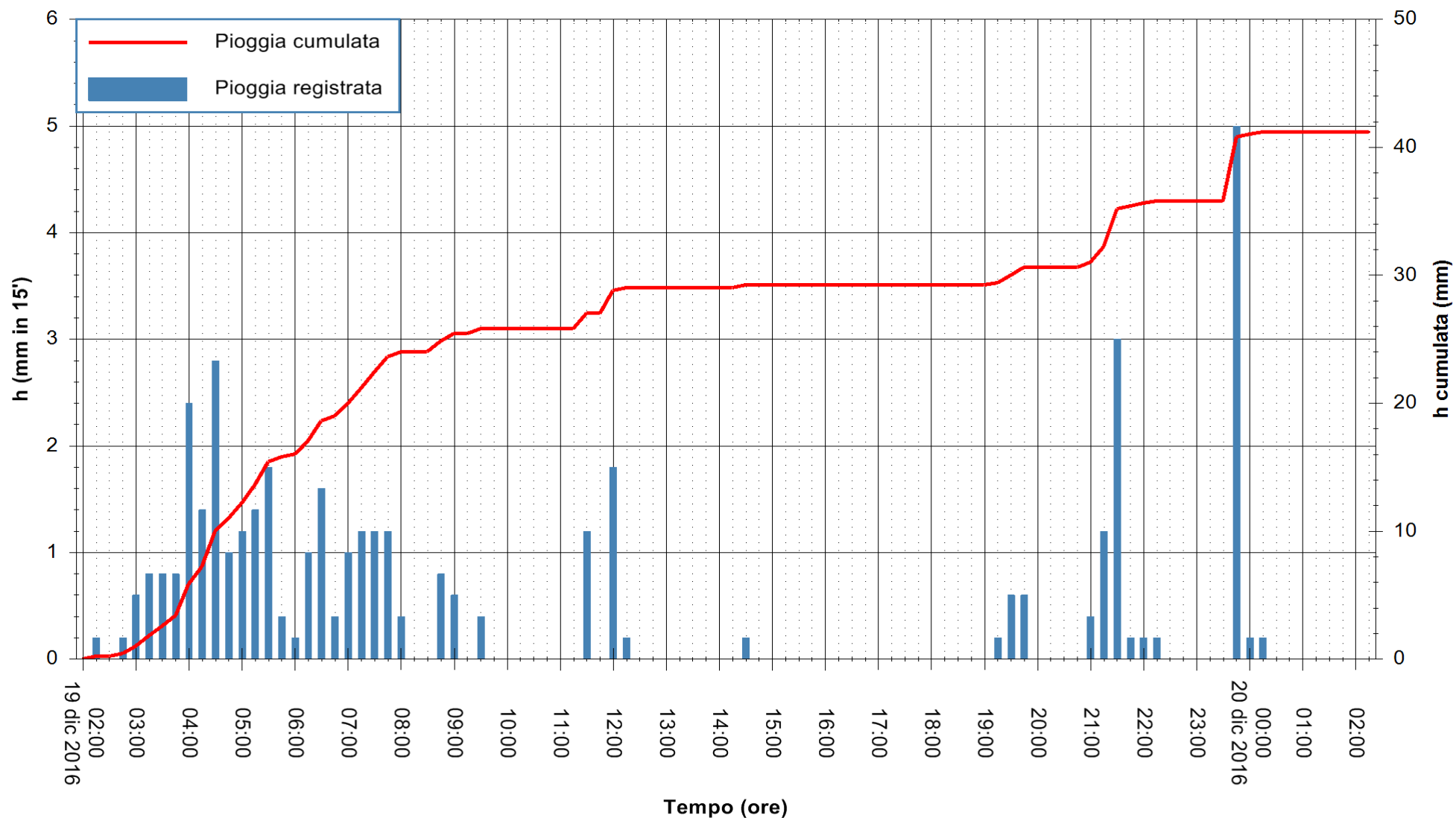
REGIONE AUTONOMA DE SARDIGNA
 REGIONE AUTONOMA DELLA SARDEGNA











Stazione pluviometrica San Priamo
Area SAN PRIAMO
Pioggia registrata nelle ultime 24 ore
Consultazione alle ore 03:51 del 20/12/2016



ARPAS
F.to il Dirigente Responsabile
Dott. Giuseppe Bianco

REGIONE AUTONOMA DE SARDIGNA
REGIONE AUTONOMA DELLA SARDEGNA

