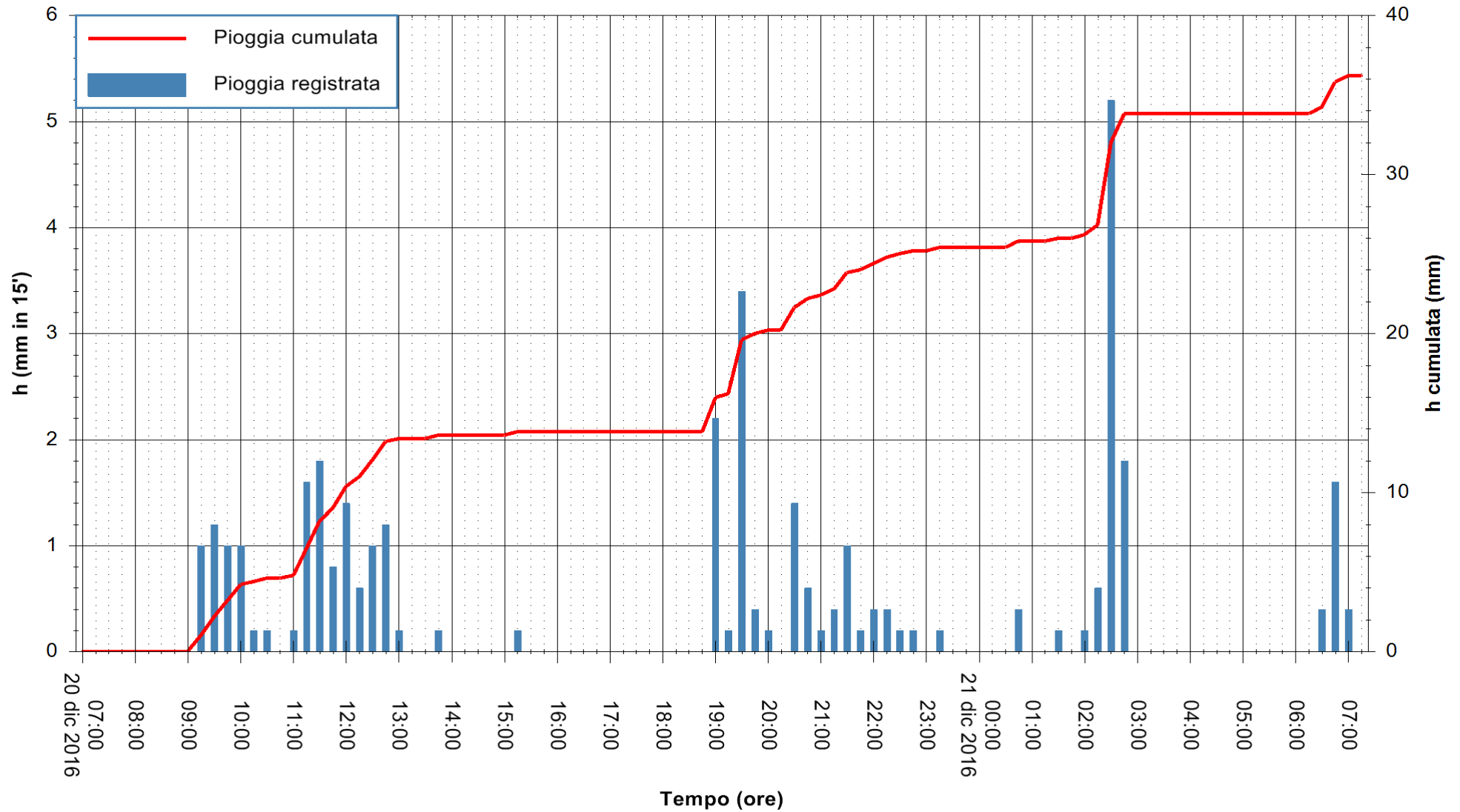


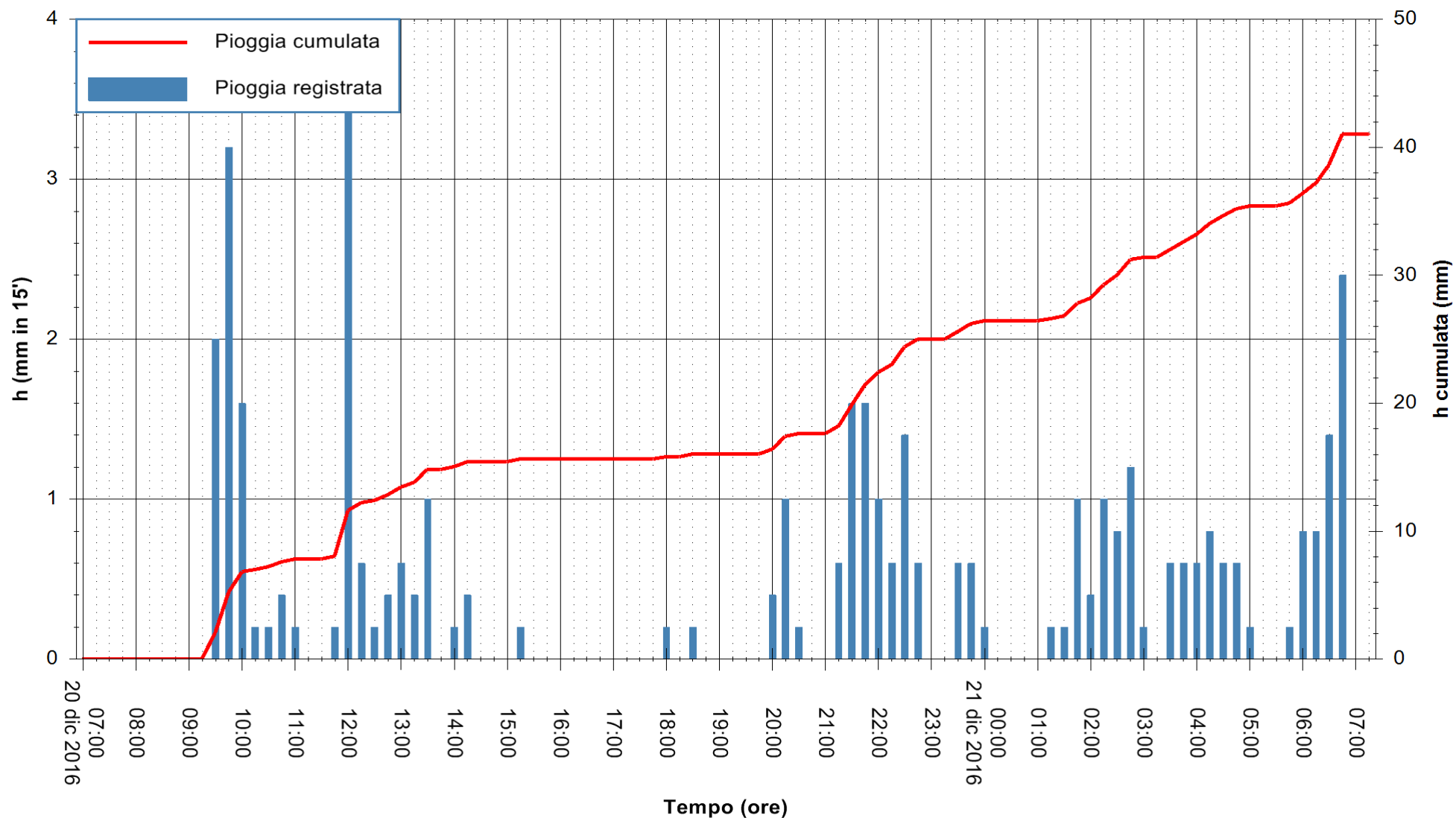
Stazione pluviometrica Fluminimannu a Decimomannu
Area DECIMOMANNU
Pioggia registrata nelle ultime 24 ore
Consultazione alle ore 08:11 del 21/12/2016

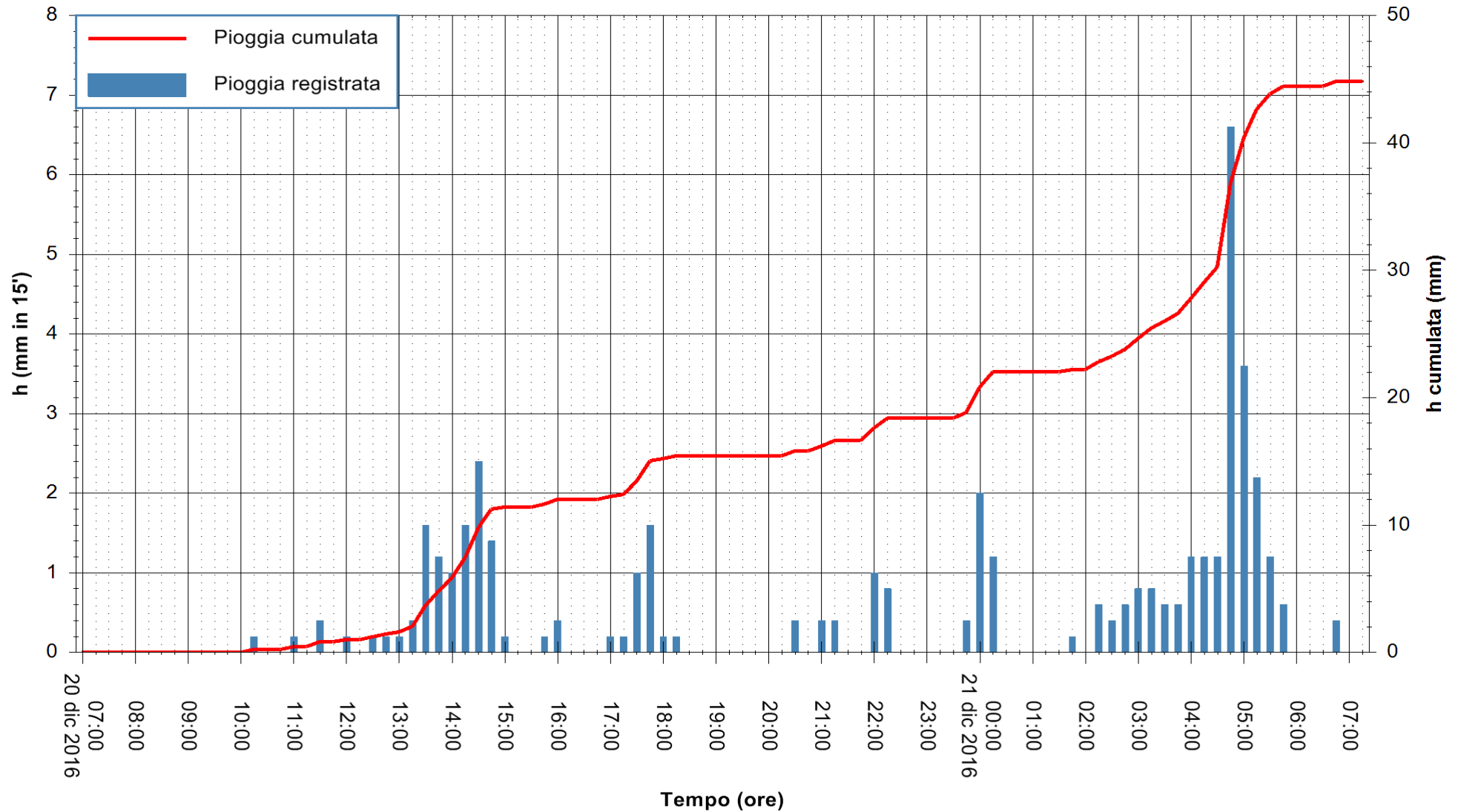


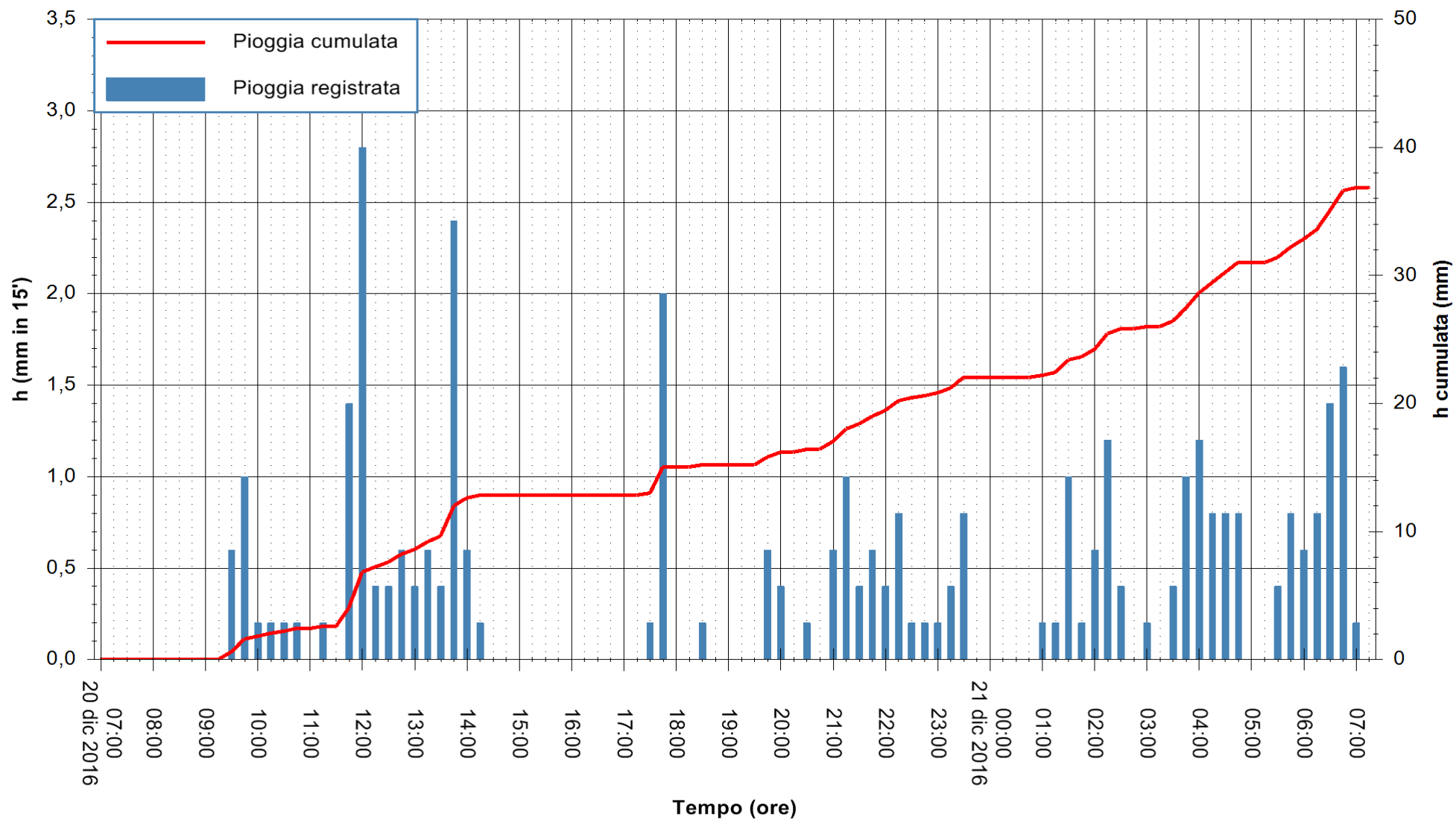
ARPAS
F.to il Dirigente Responsabile
Dott. Giuseppe Bianco

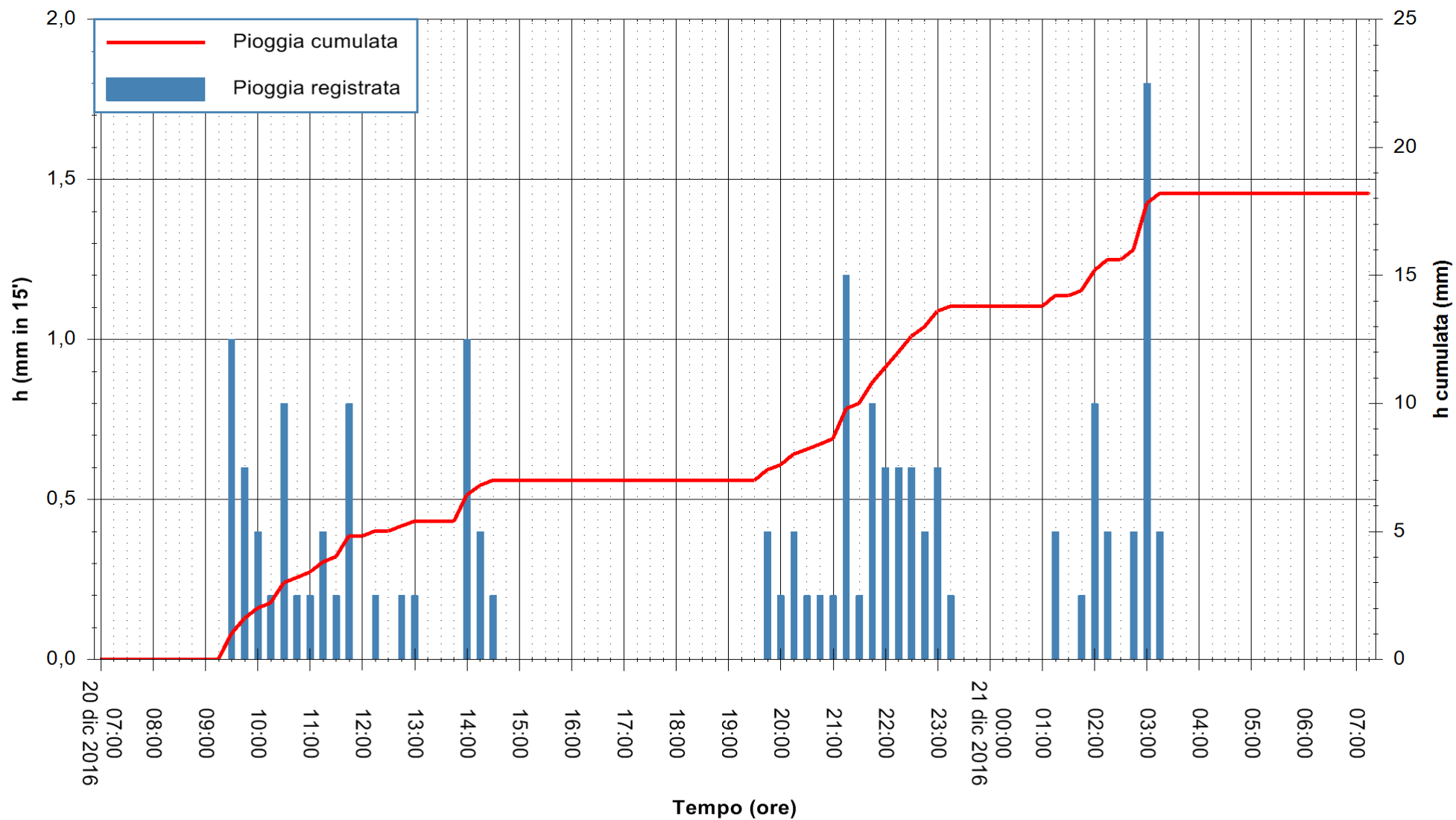
REGIONE AUTONOMA DE SARDIGNA
REGIONE AUTONOMA DELLA SARDEGNA

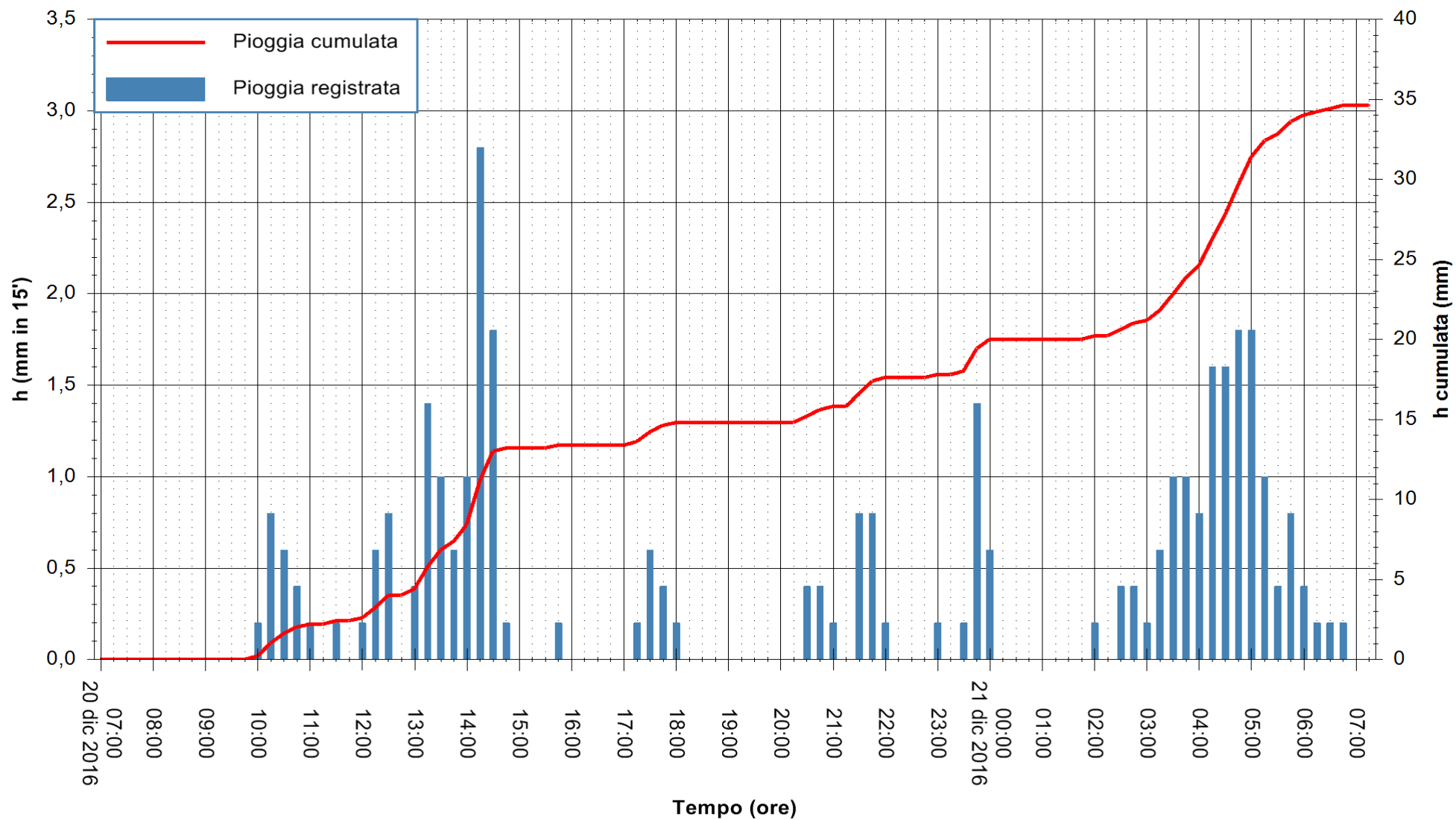


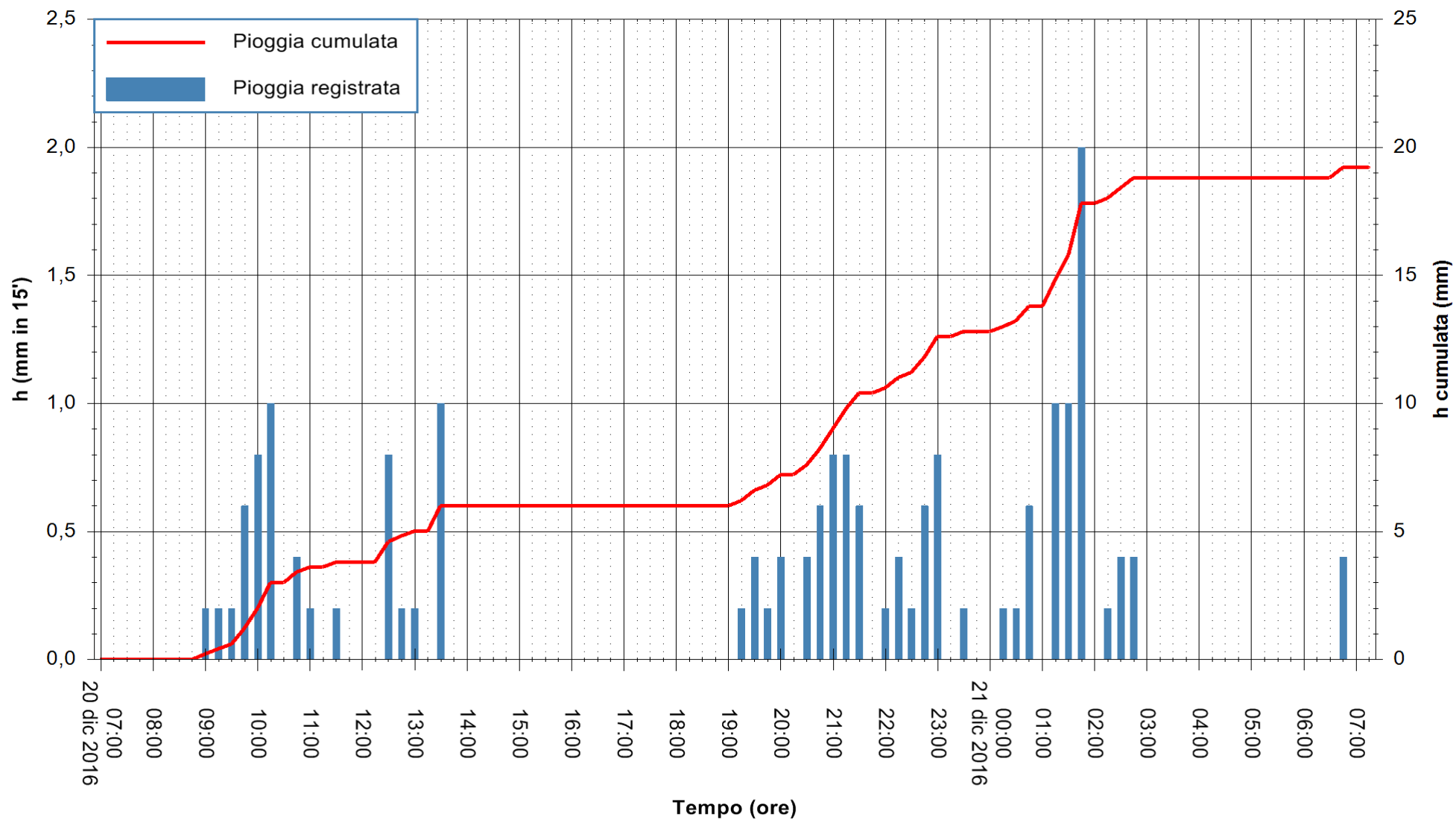










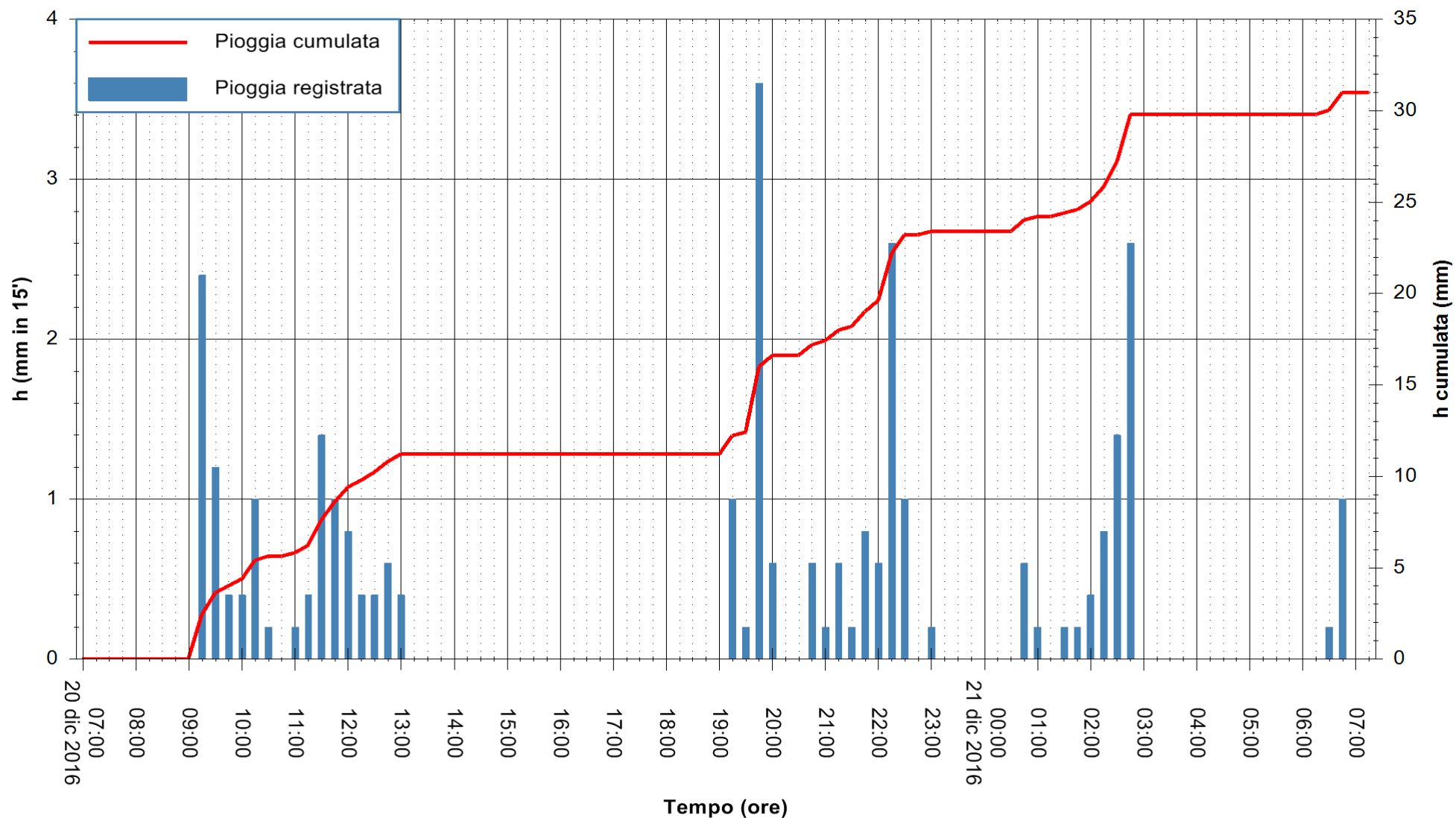


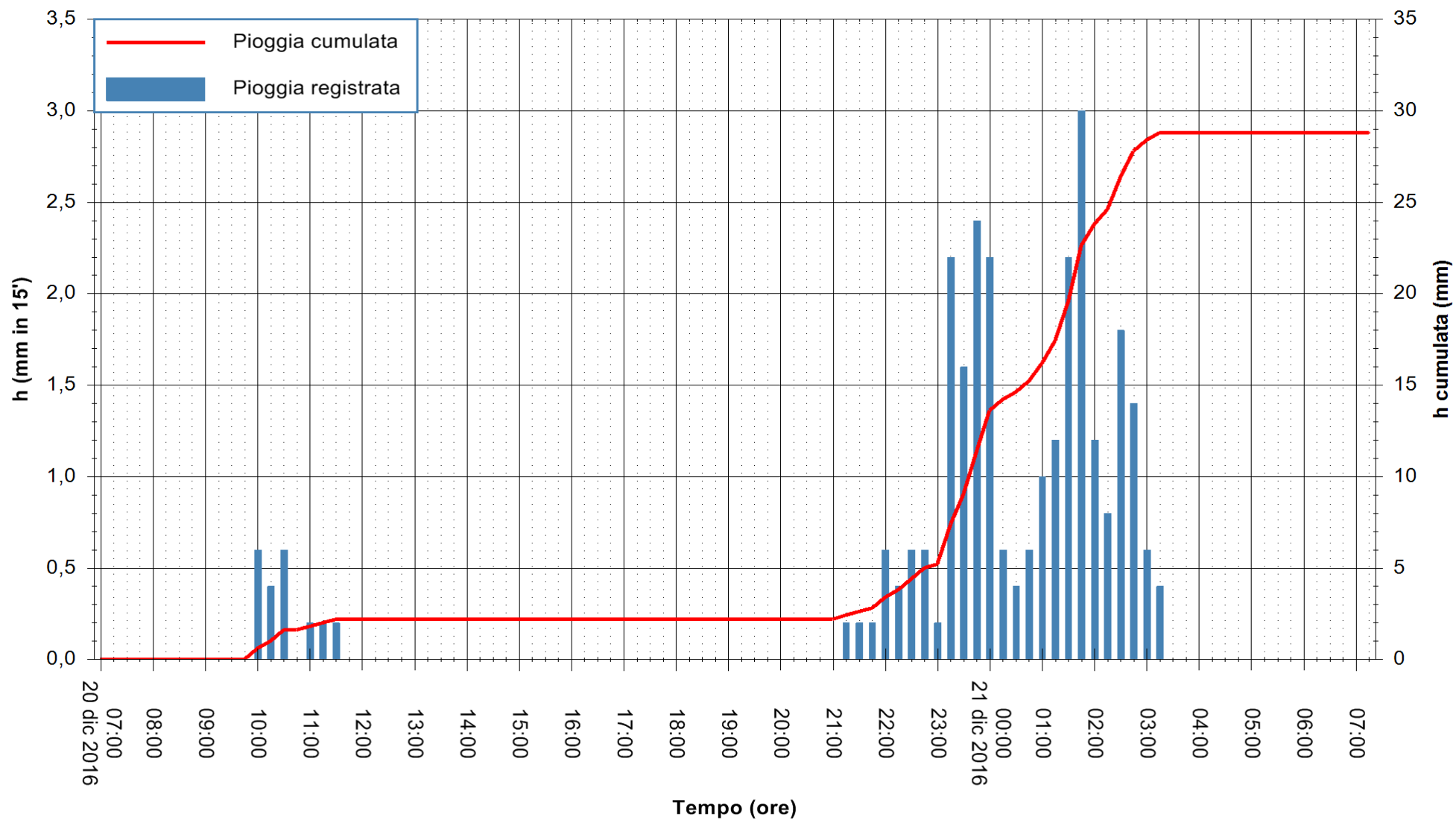
Stazione pluviometrica Villasor
 Area IS ARENAS
 Pioggia registrata nelle ultime 24 ore
 Consultazione alle ore 08:11 del 21/12/2016

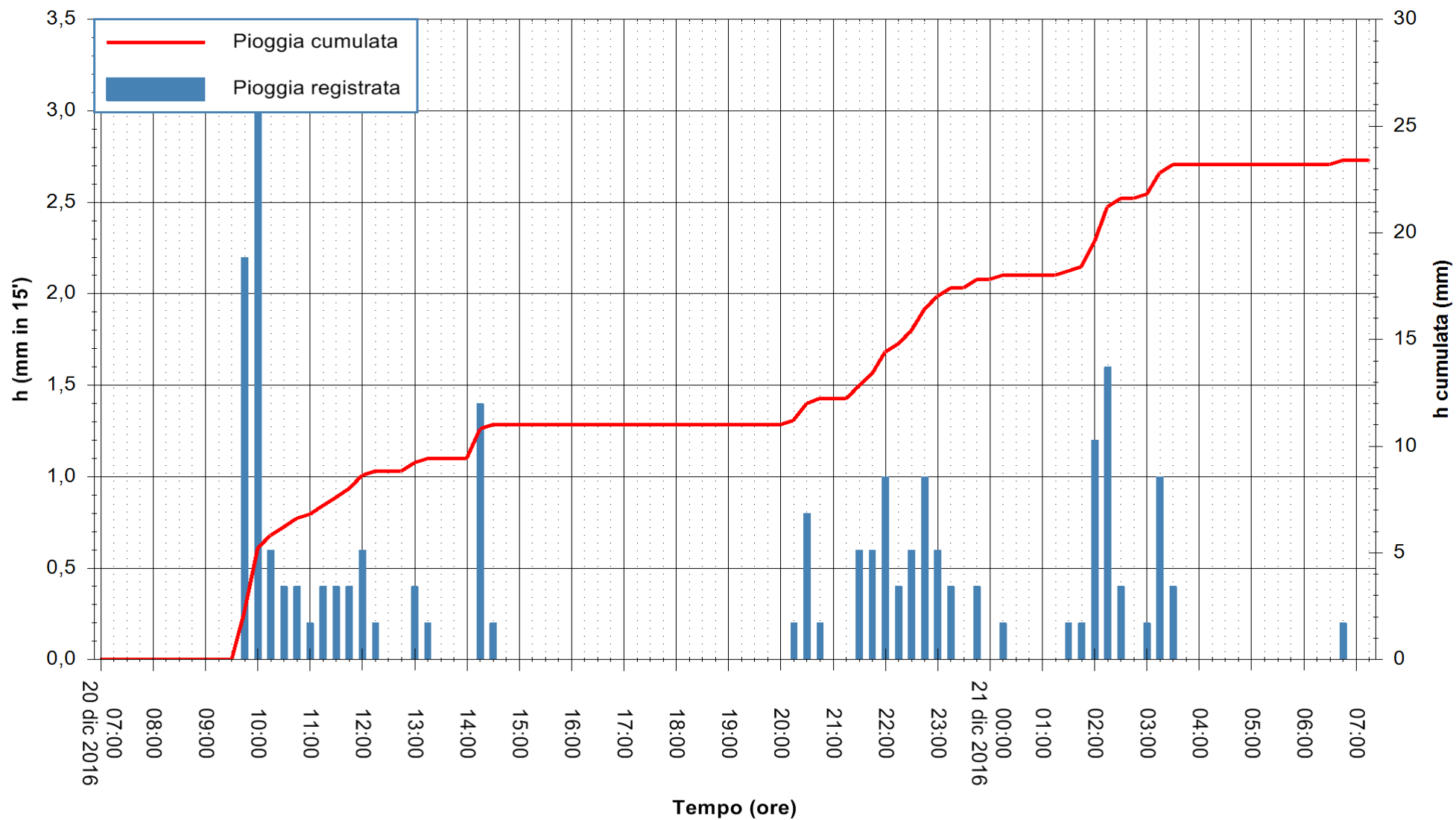


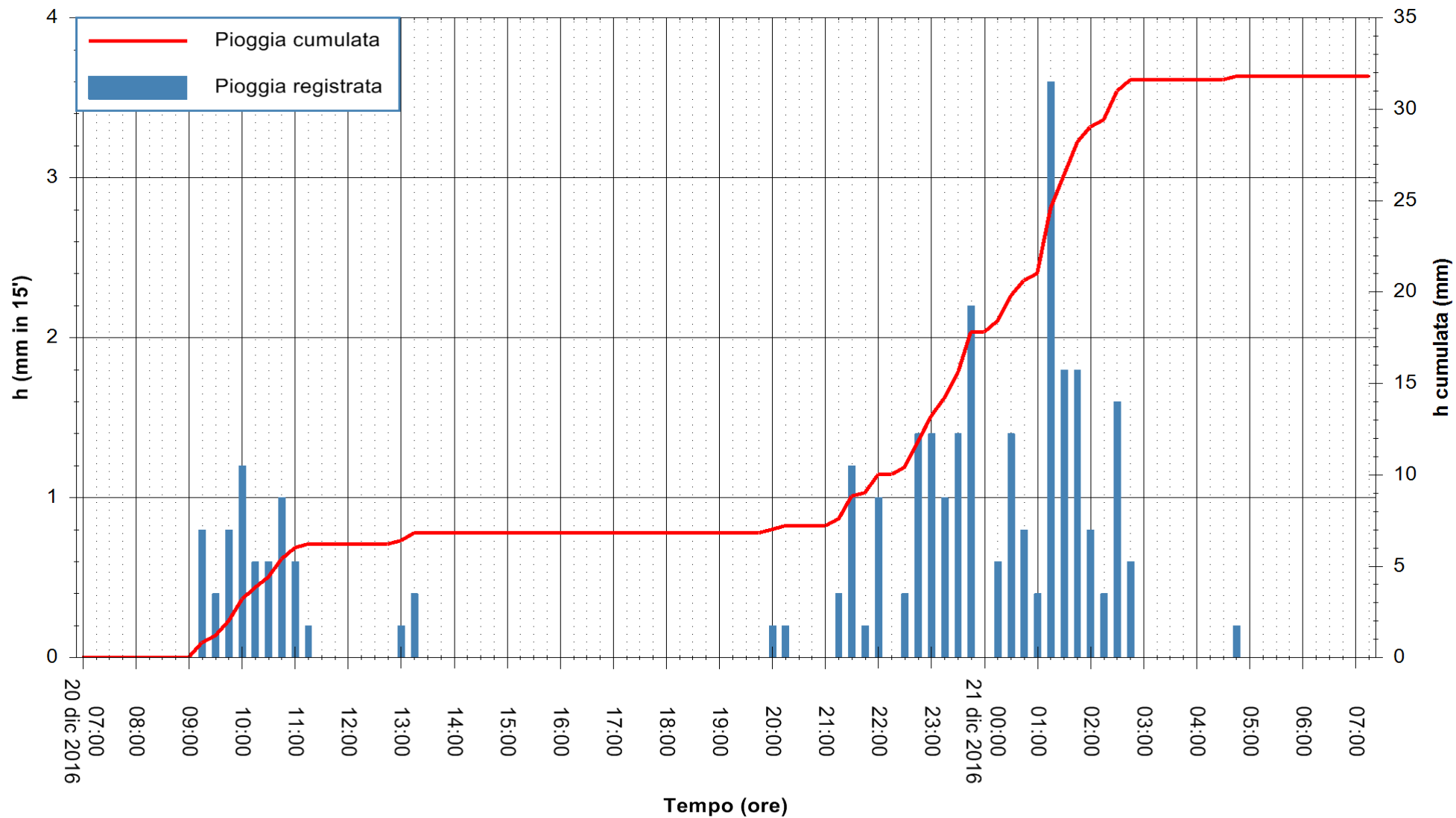
ARPAS
 F.to il Dirigente Responsabile
 Dott. Giuseppe Bianco

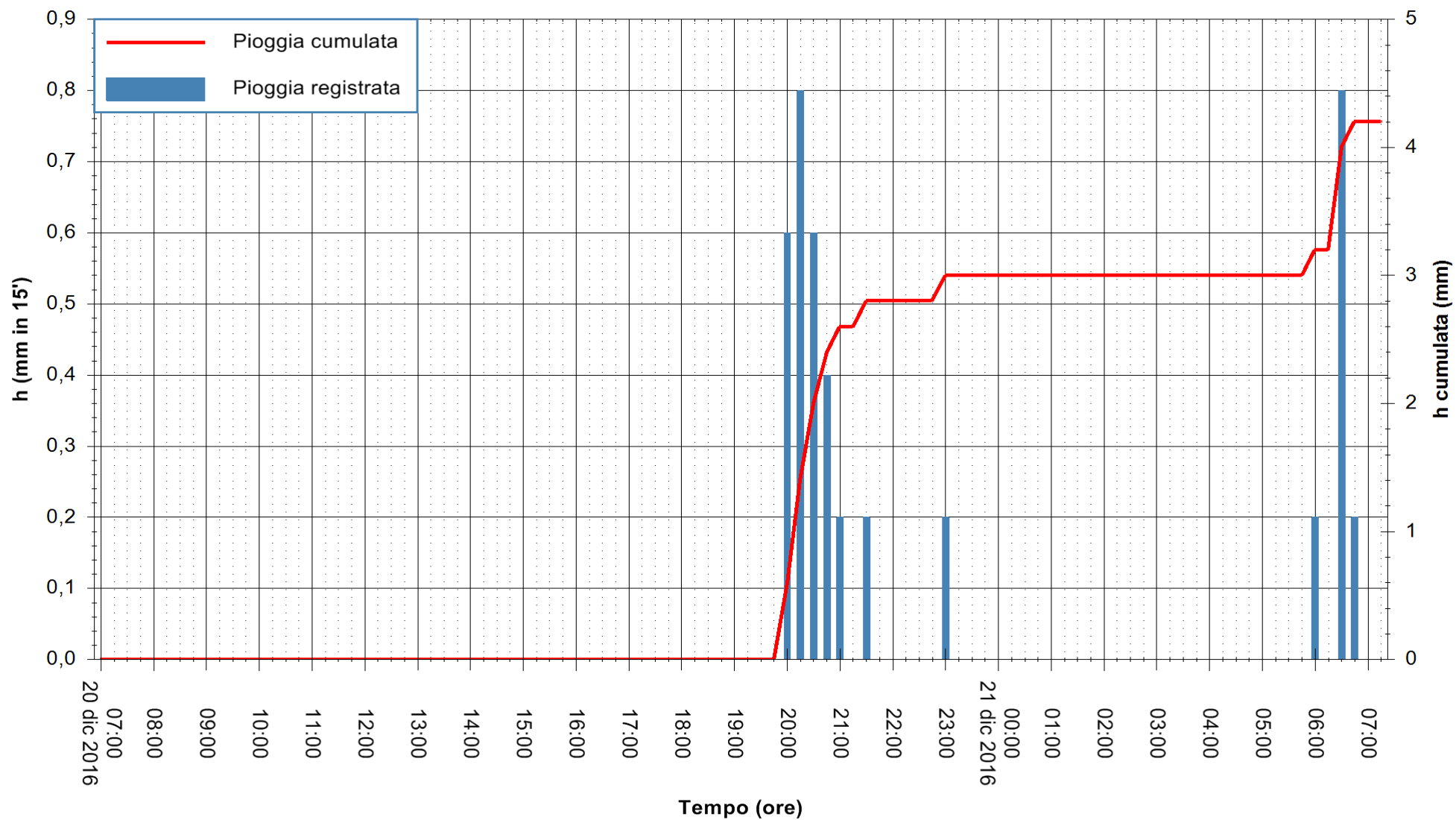
REGIONE AUTONOMA DE SARDIGNA
 REGIONE AUTONOMA DELLA SARDEGNA

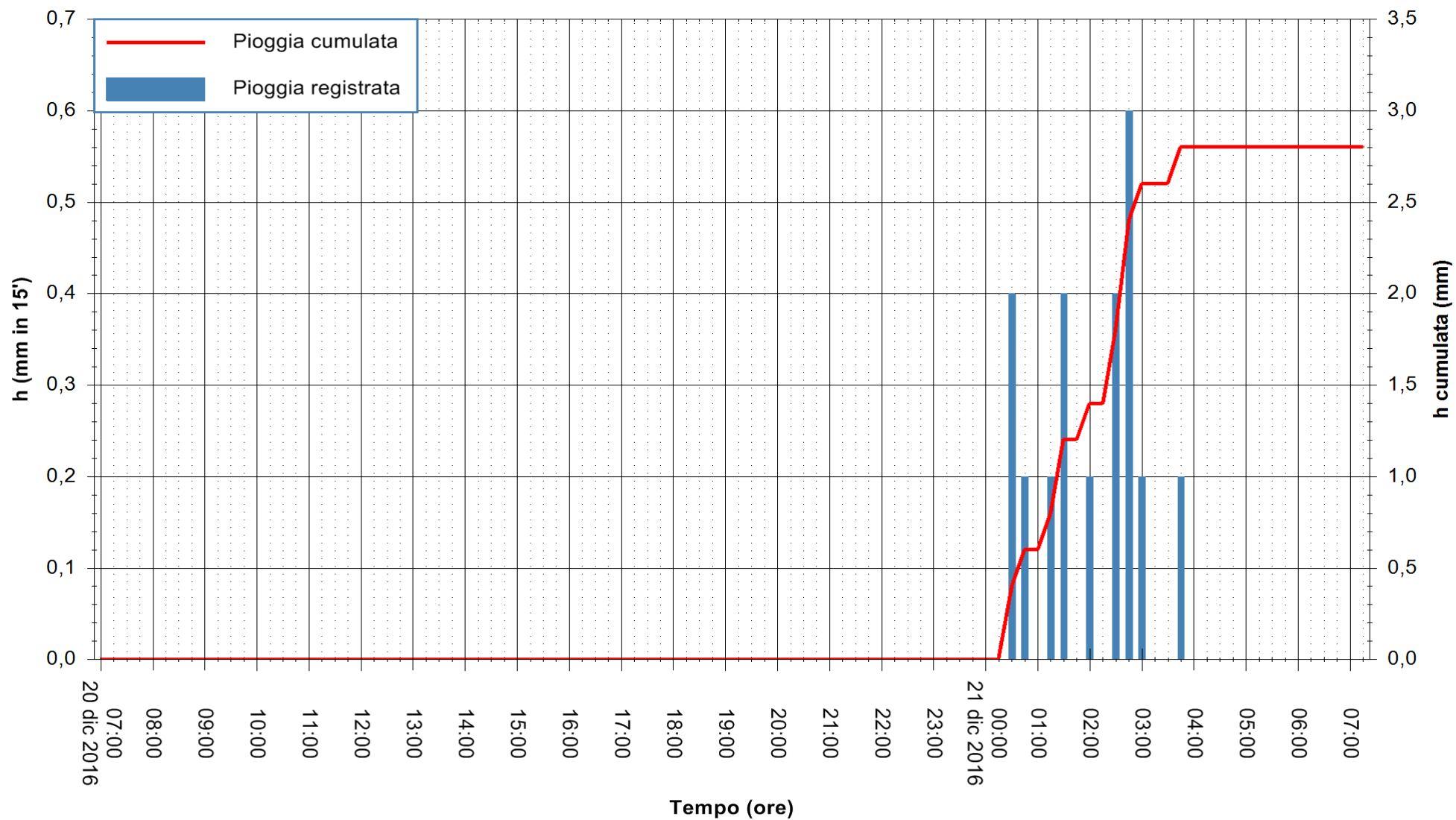


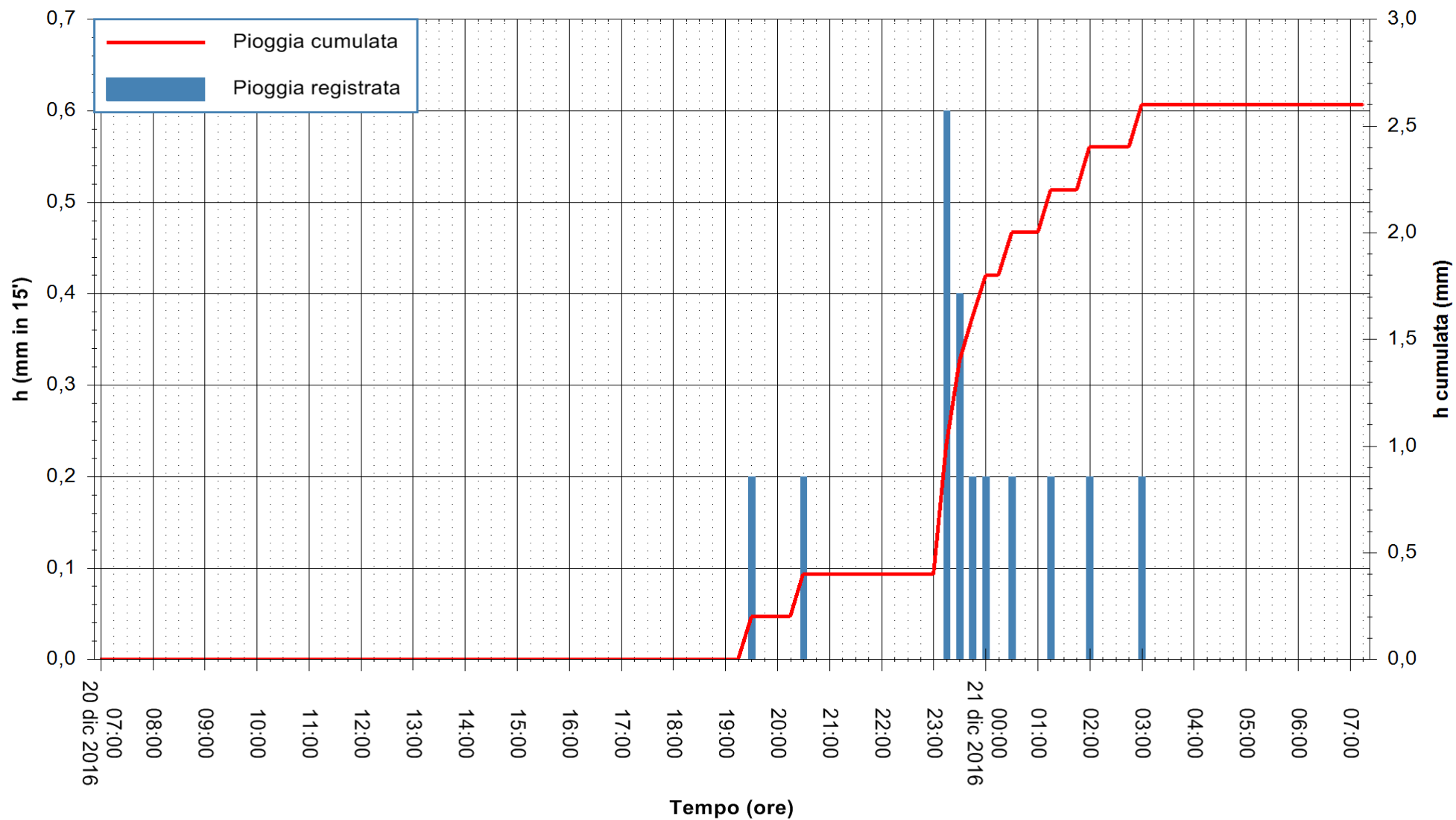










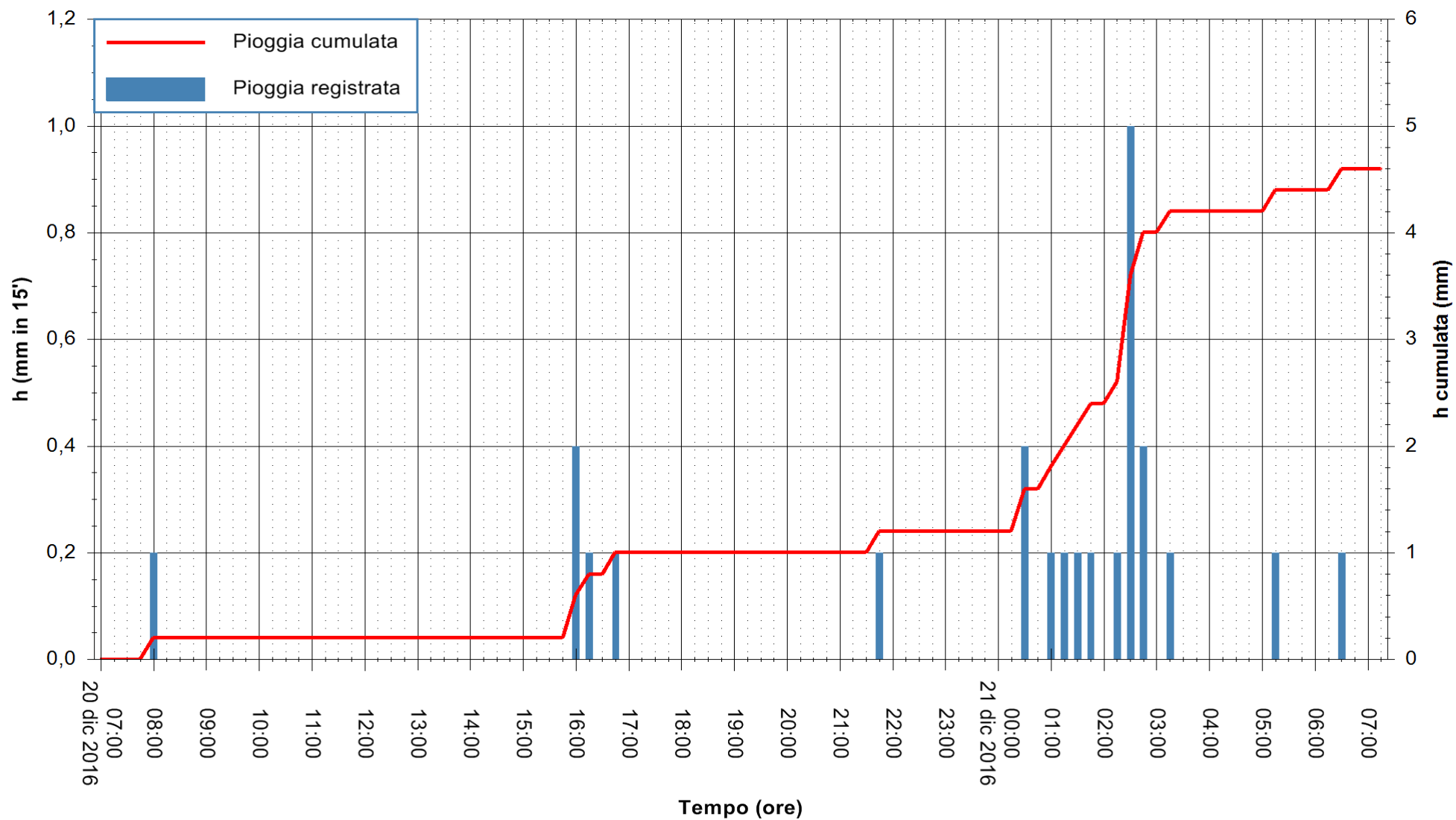


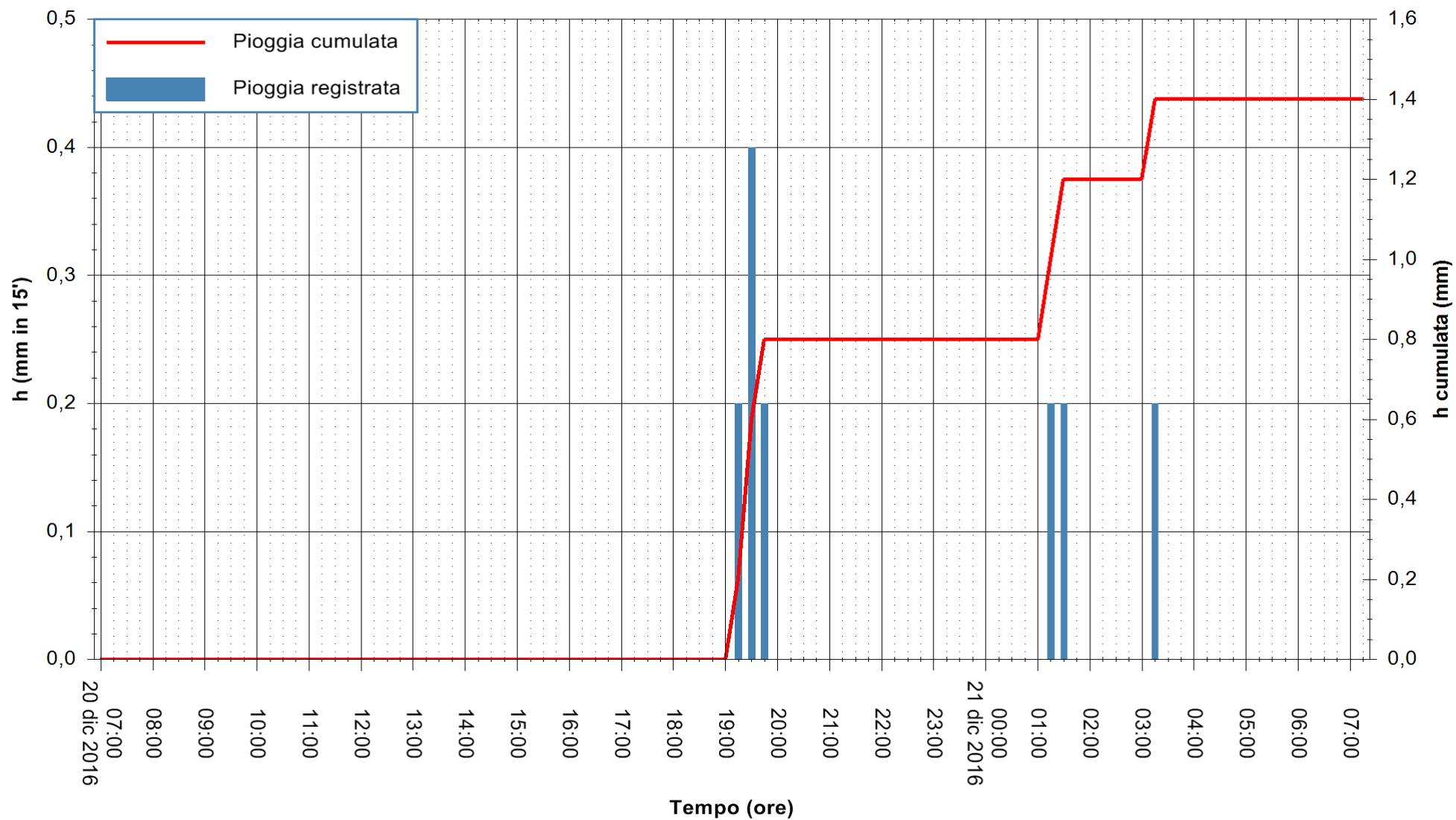
Stazione pluviometrica Pianu
Area PIANU 15
Pioggia registrata nelle ultime 24 ore
Consultazione alle ore 08:11 del 21/12/2016

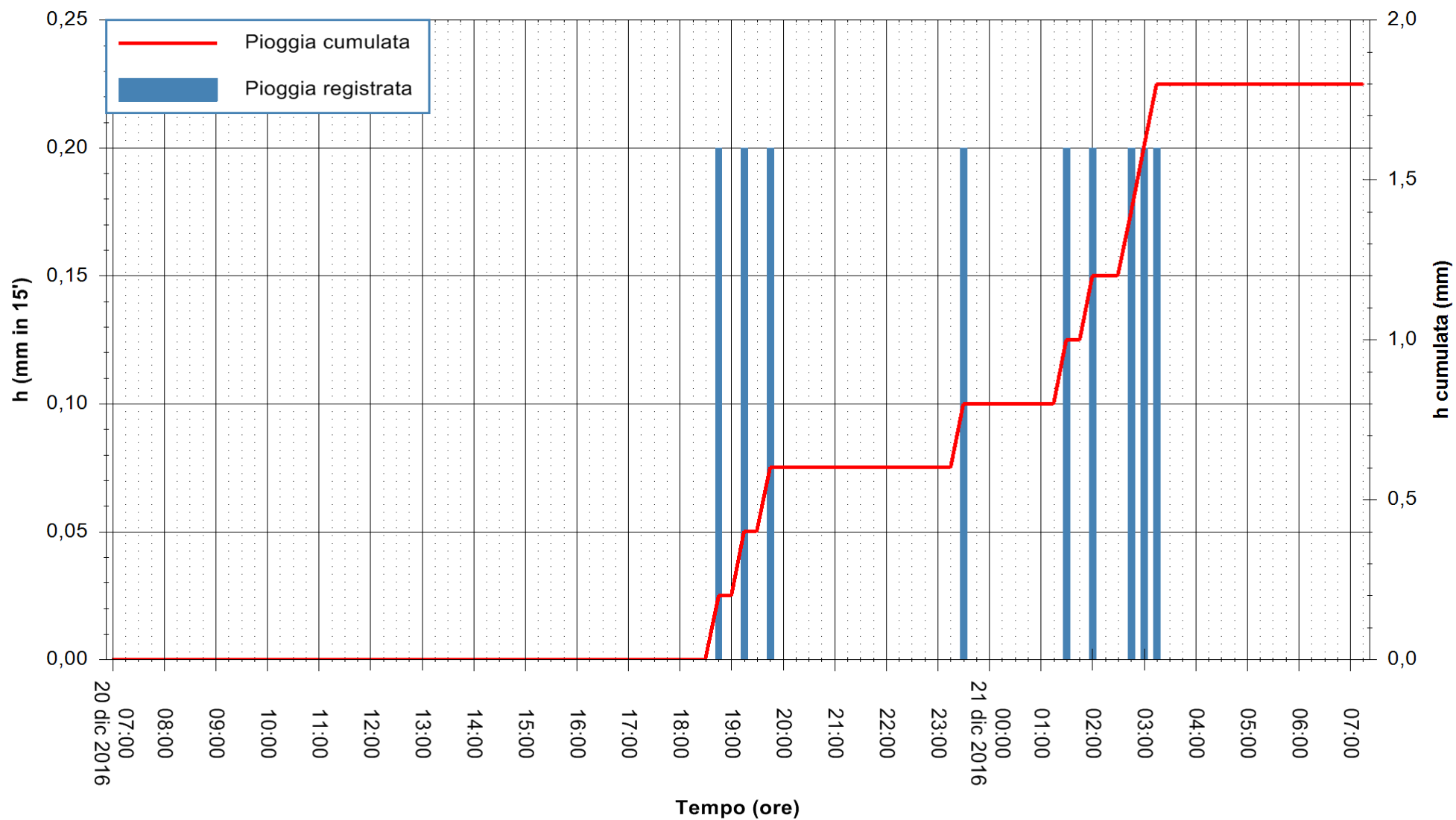


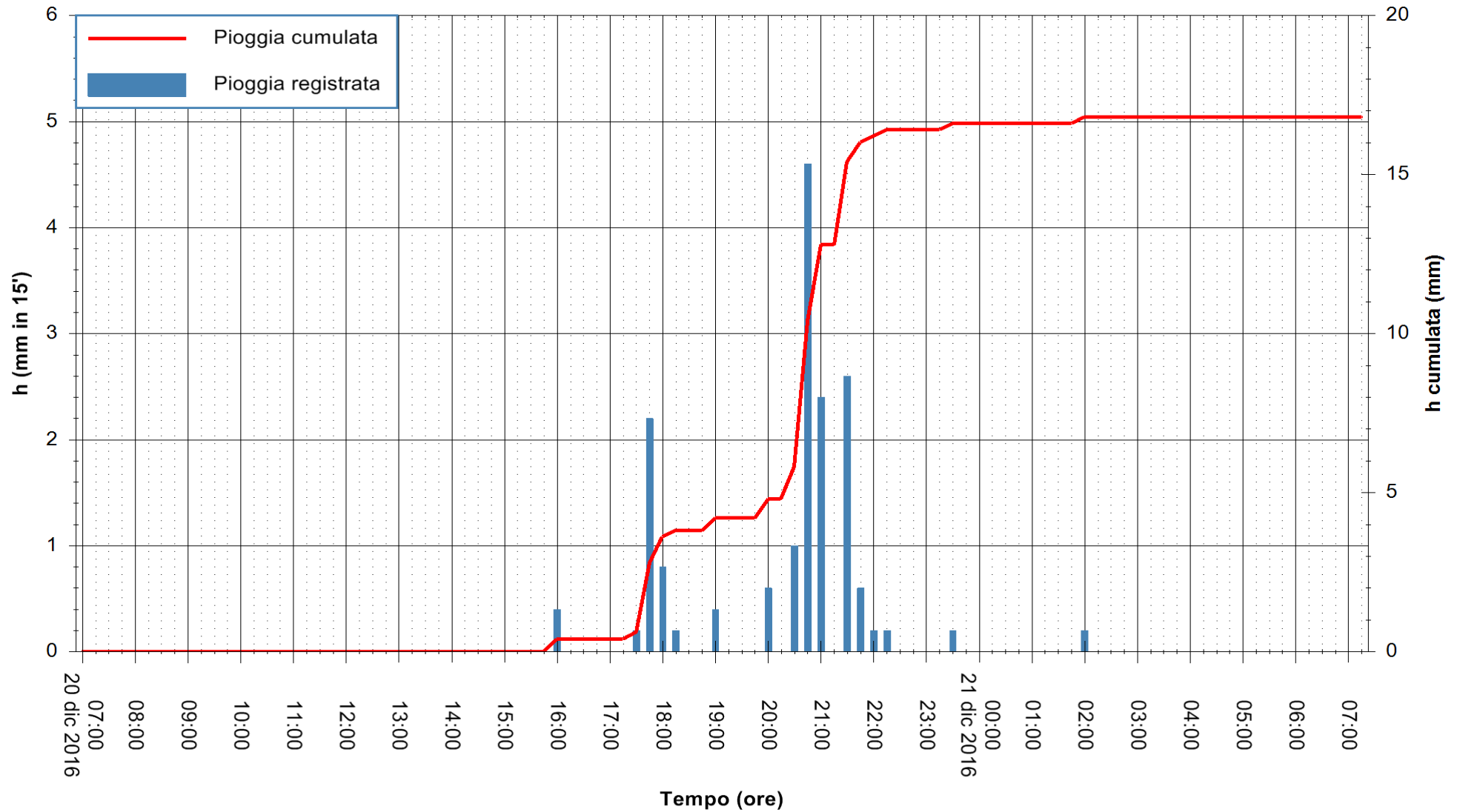
ARPAS
F.to il Dirigente Responsabile
Dott. Giuseppe Bianco

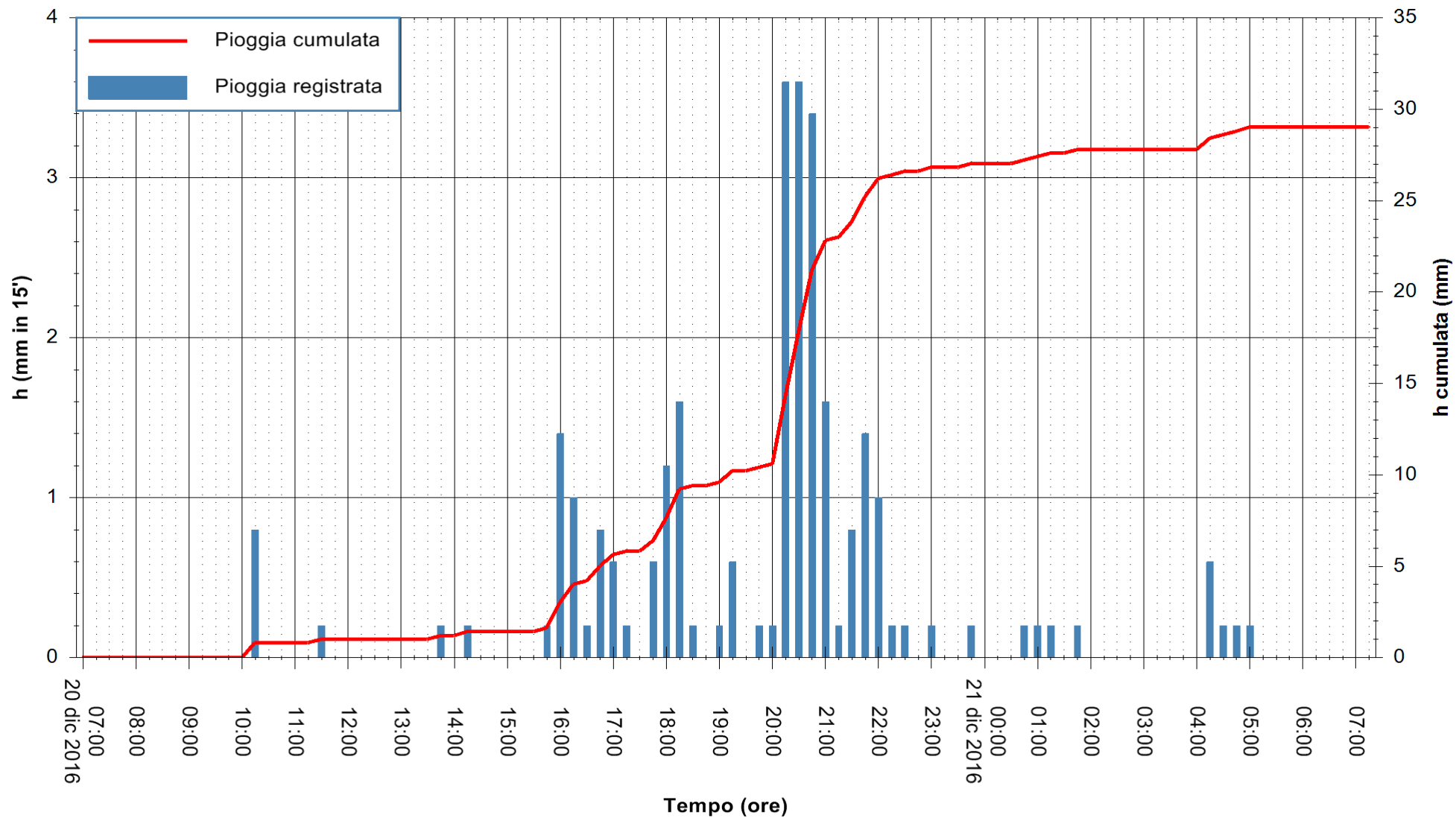
REGIONE AUTÒNOMA DE SARDIGNA
REGIONE AUTONOMA DELLA SARDEGNA

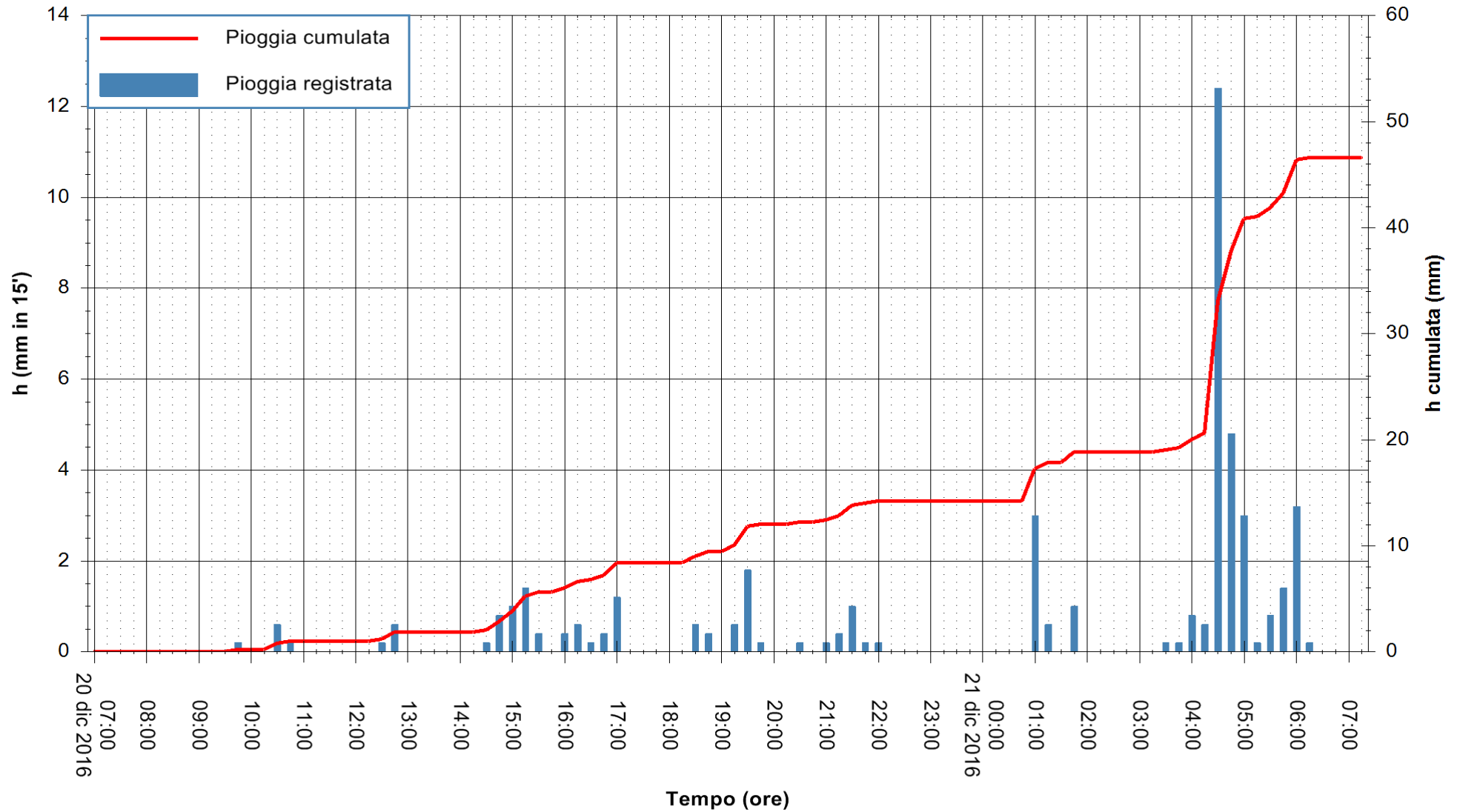


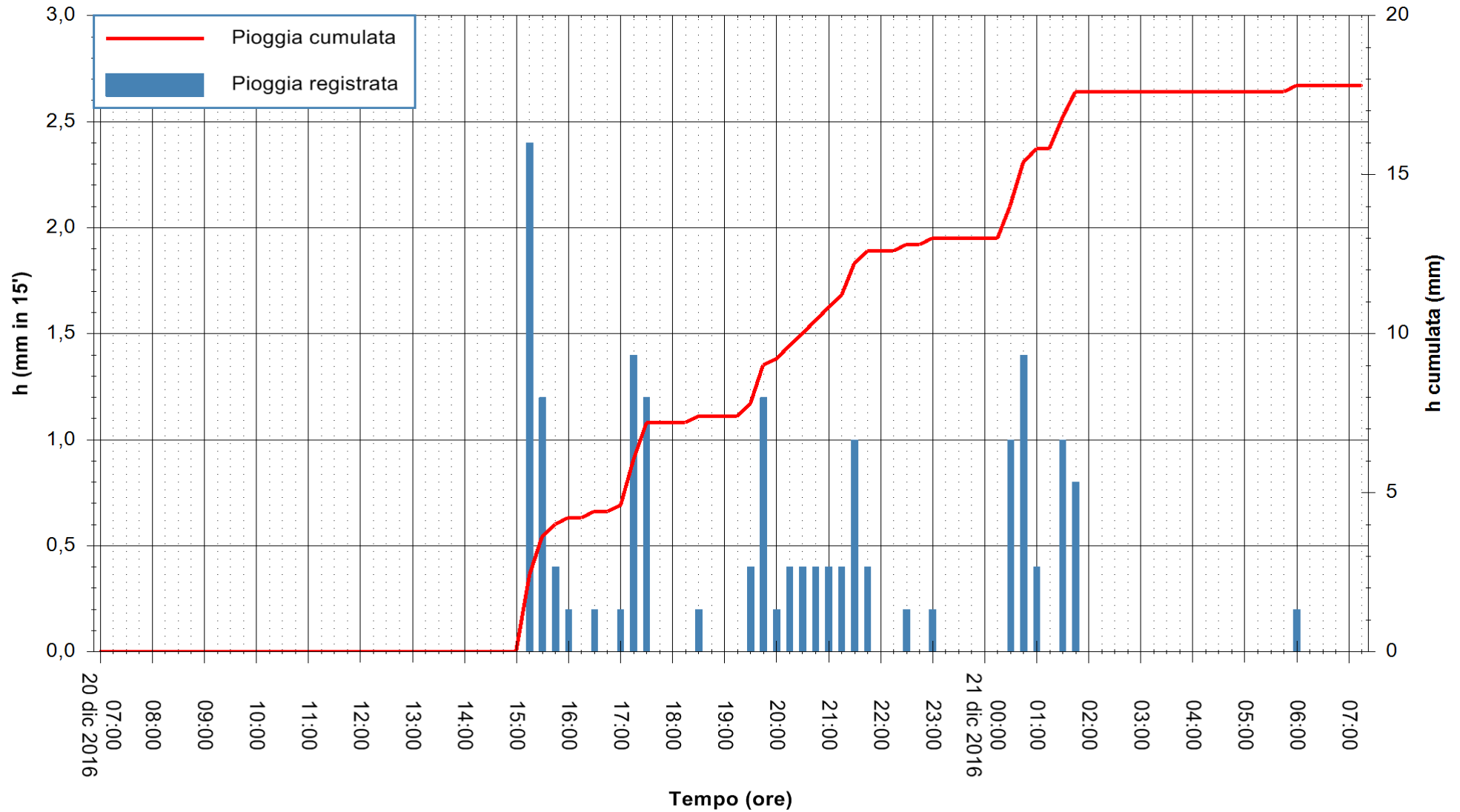


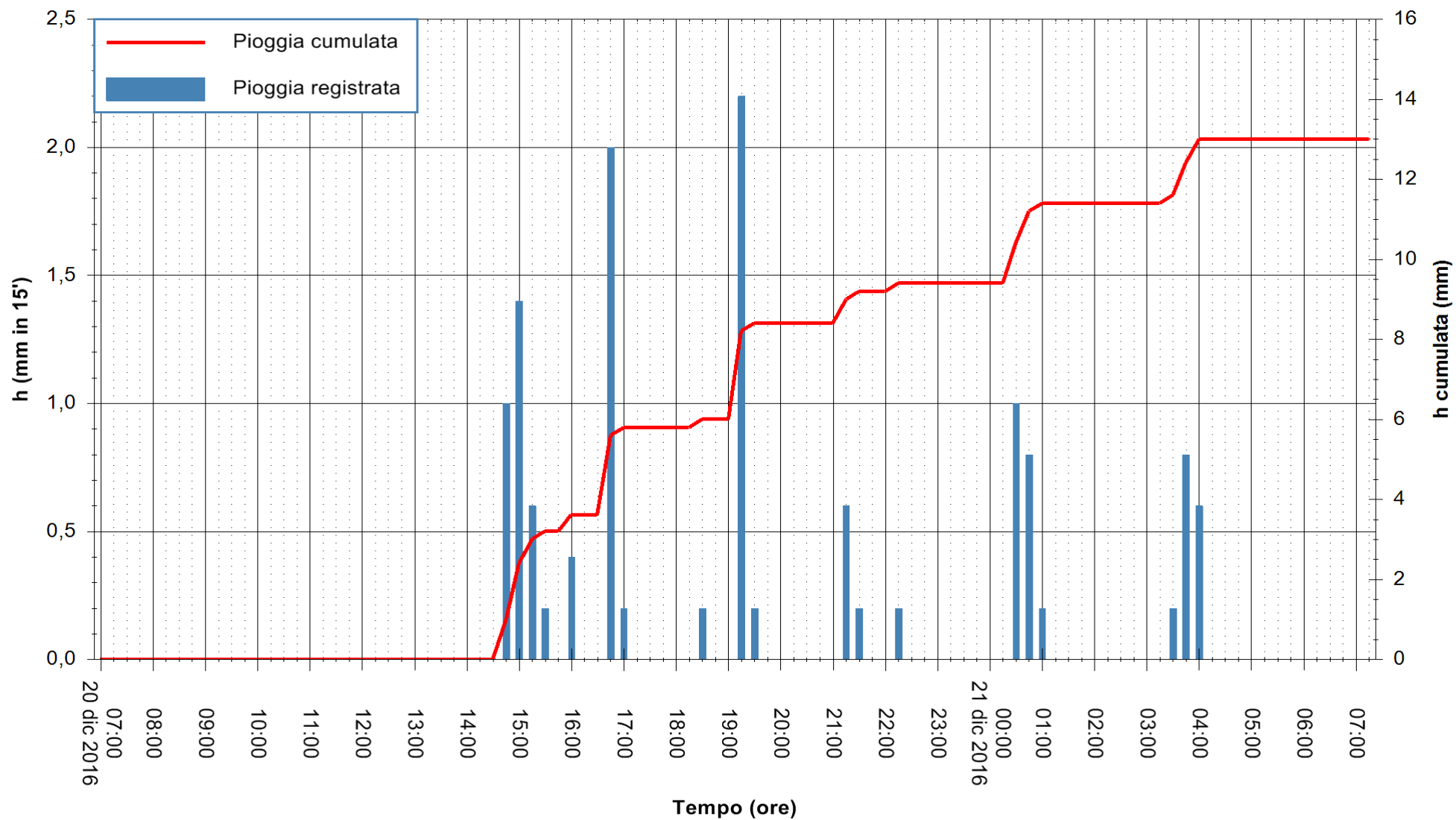


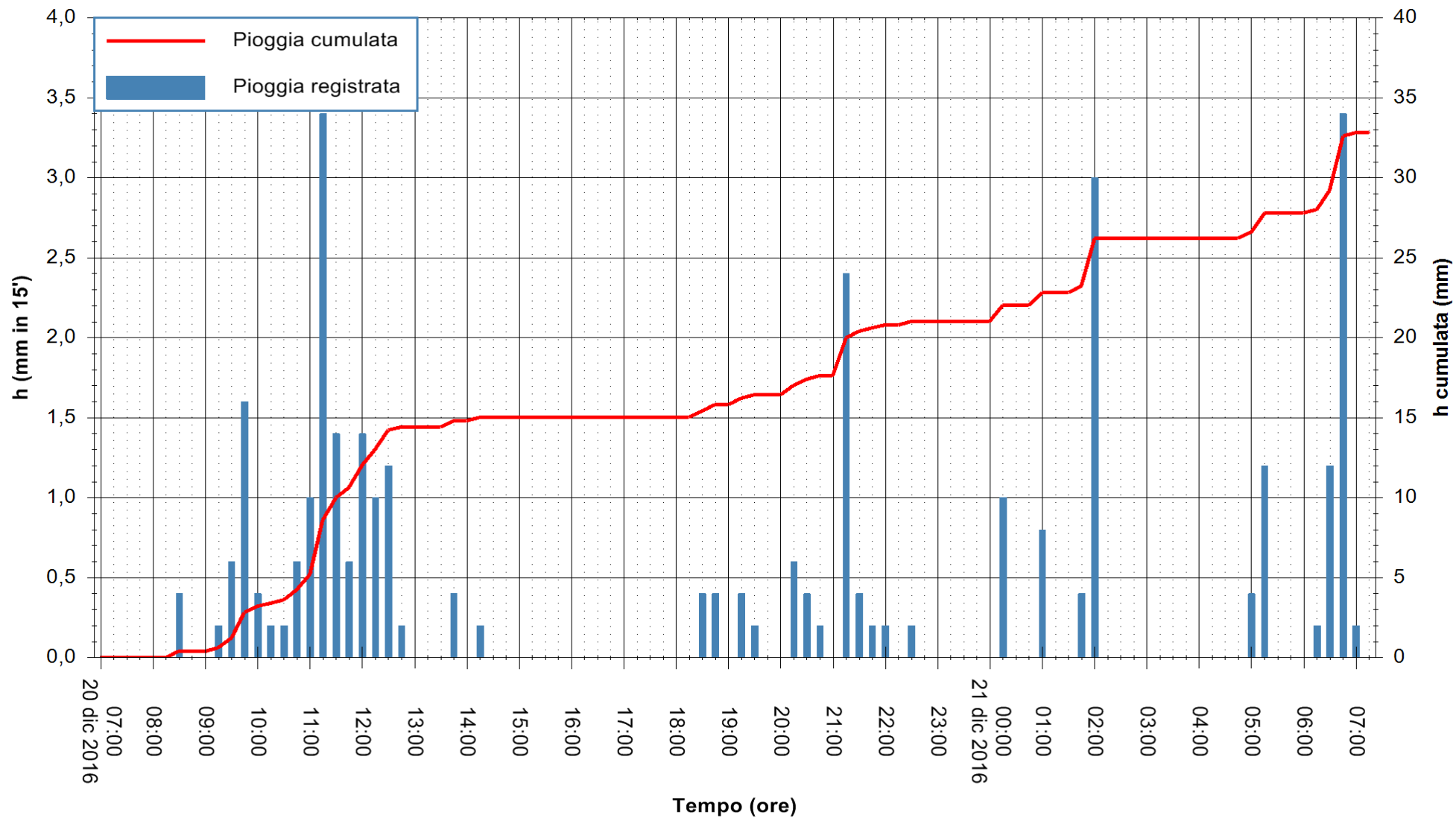


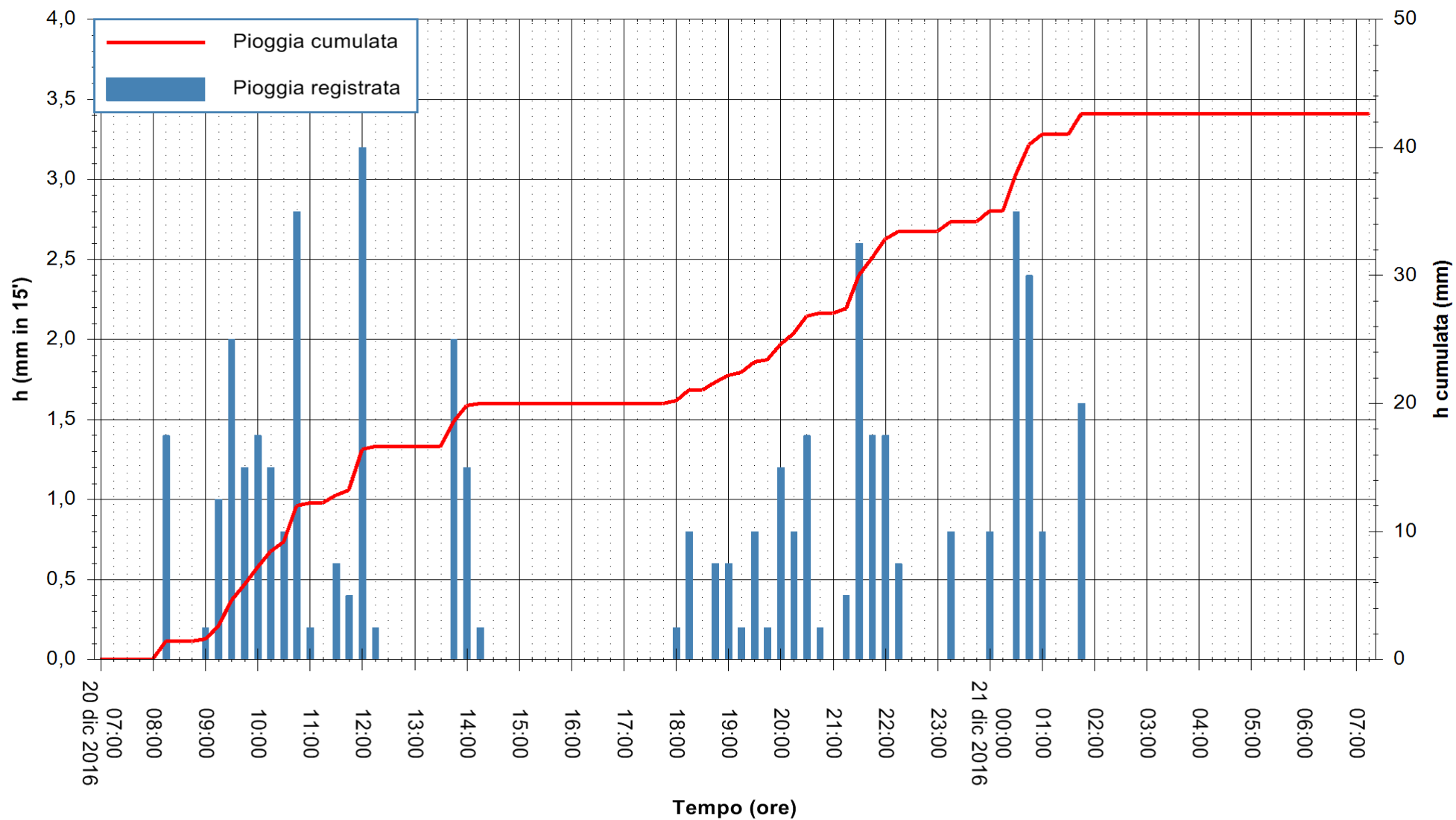










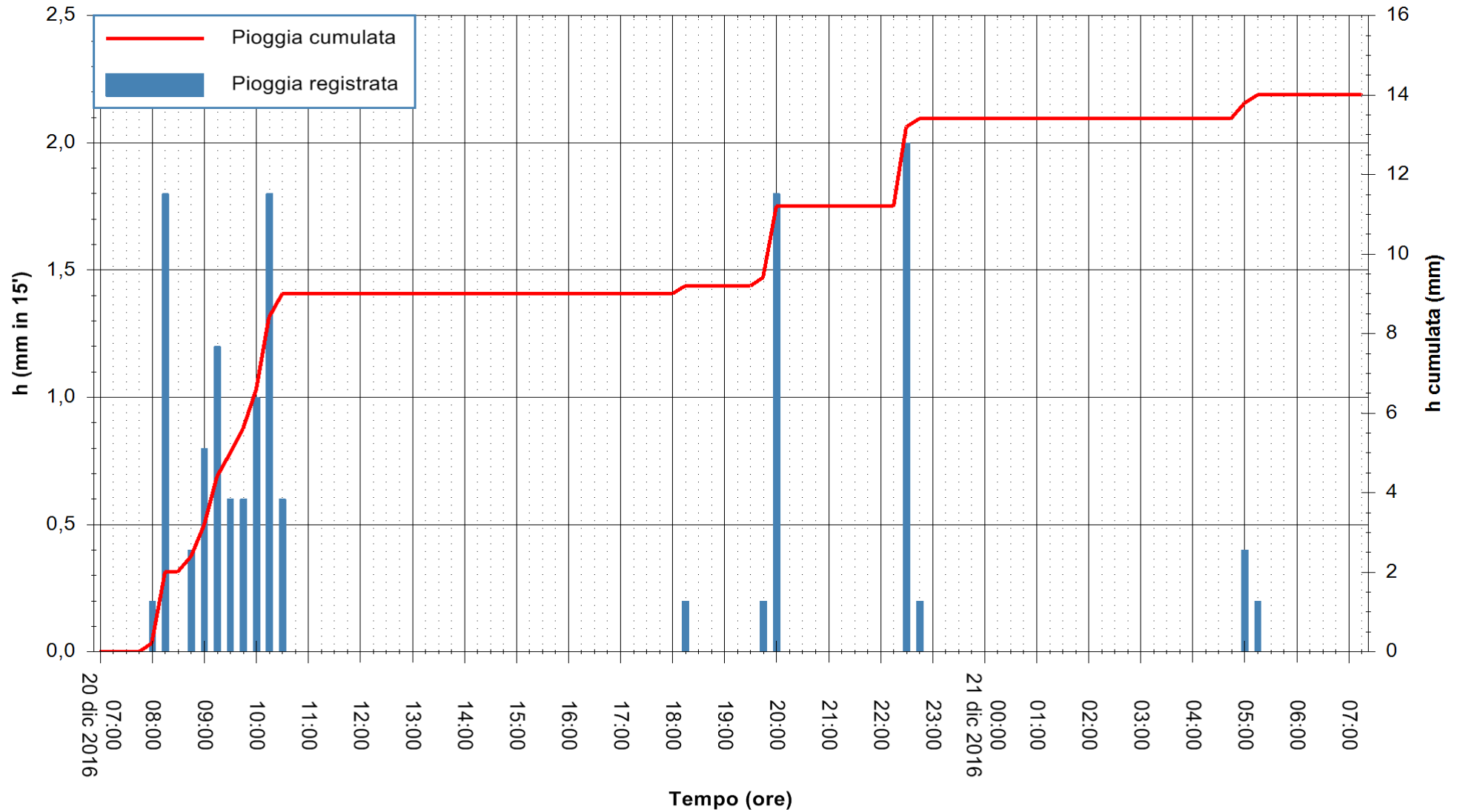


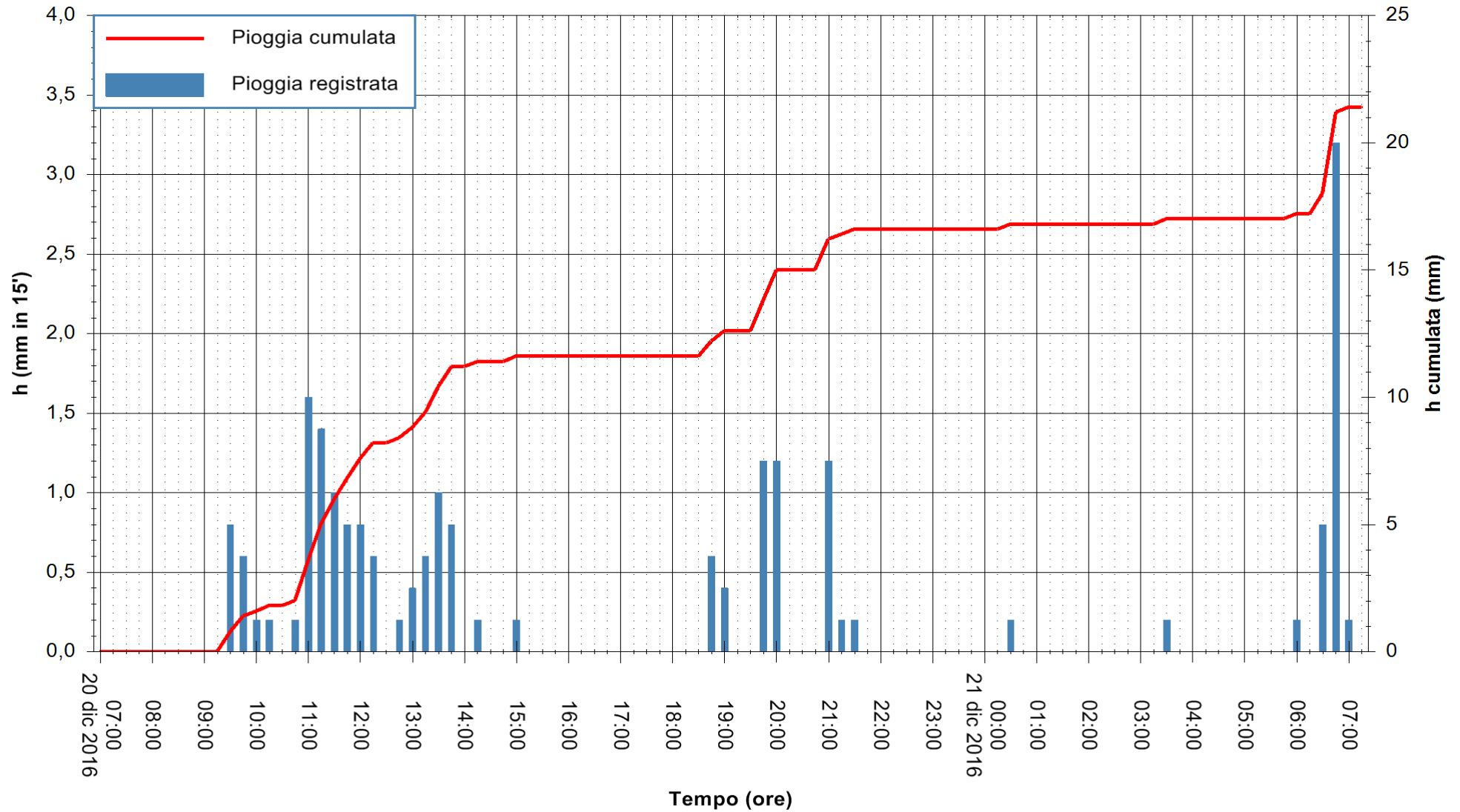
Stazione pluviometrica Porto Pino
Area IS PILLONIS
Pioggia registrata nelle ultime 24 ore
Consultazione alle ore 08:11 del 21/12/2016



ARPAS
F.to il Dirigente Responsabile
Dott. Giuseppe Bianco

REGIONE AUTÒNOMA DE SARDIGNA
REGIONE AUTONOMA DELLA SARDEGNA





Stazione pluviometrica Santa Lucia di Capoterra
 Area S.LUCIA
 Pioggia registrata nelle ultime 24 ore
 Consultazione alle ore 08:11 del 21/12/2016



ARPAS
 F.to il Dirigente Responsabile
 Dott. Giuseppe Bianco

REGIONE AUTONOMA DE SARDIGNA
 REGIONE AUTONOMA DELLA SARDEGNA

