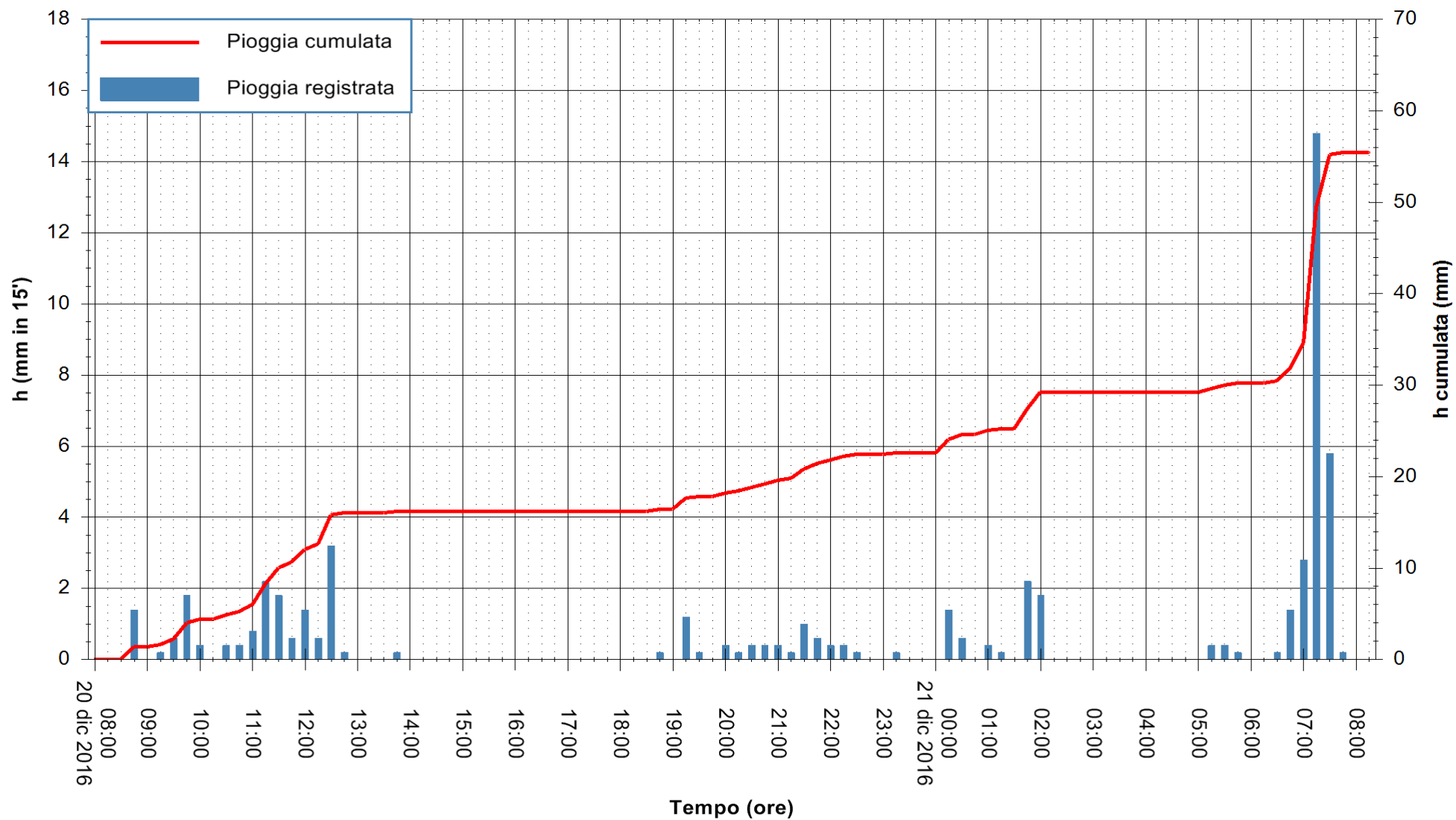


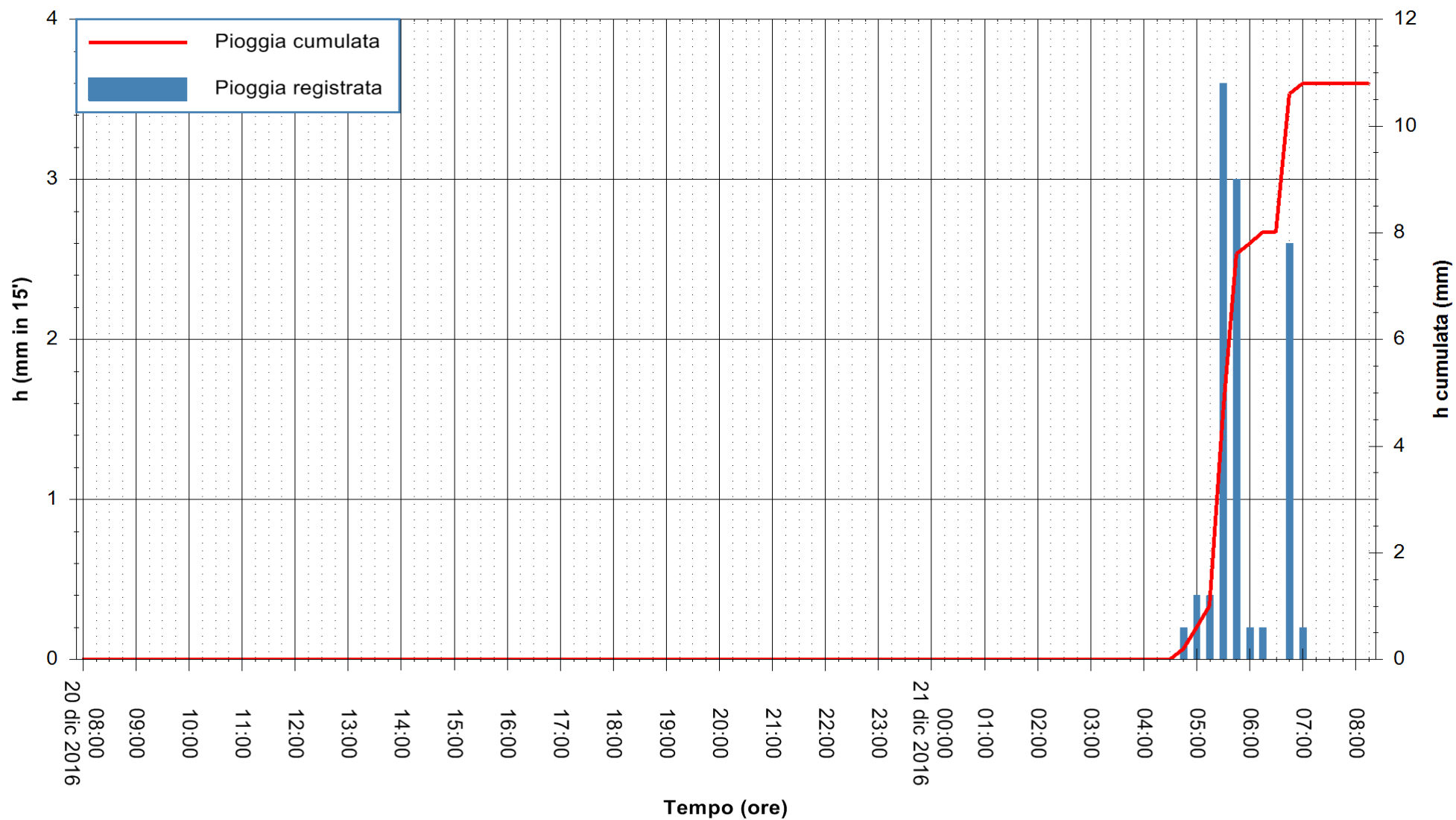
Stazione pluviometrica Santa Lucia di Capoterra
Area S.LUCIA
Pioggia registrata nelle ultime 24 ore
Consultazione alle ore 09:11 del 21/12/2016

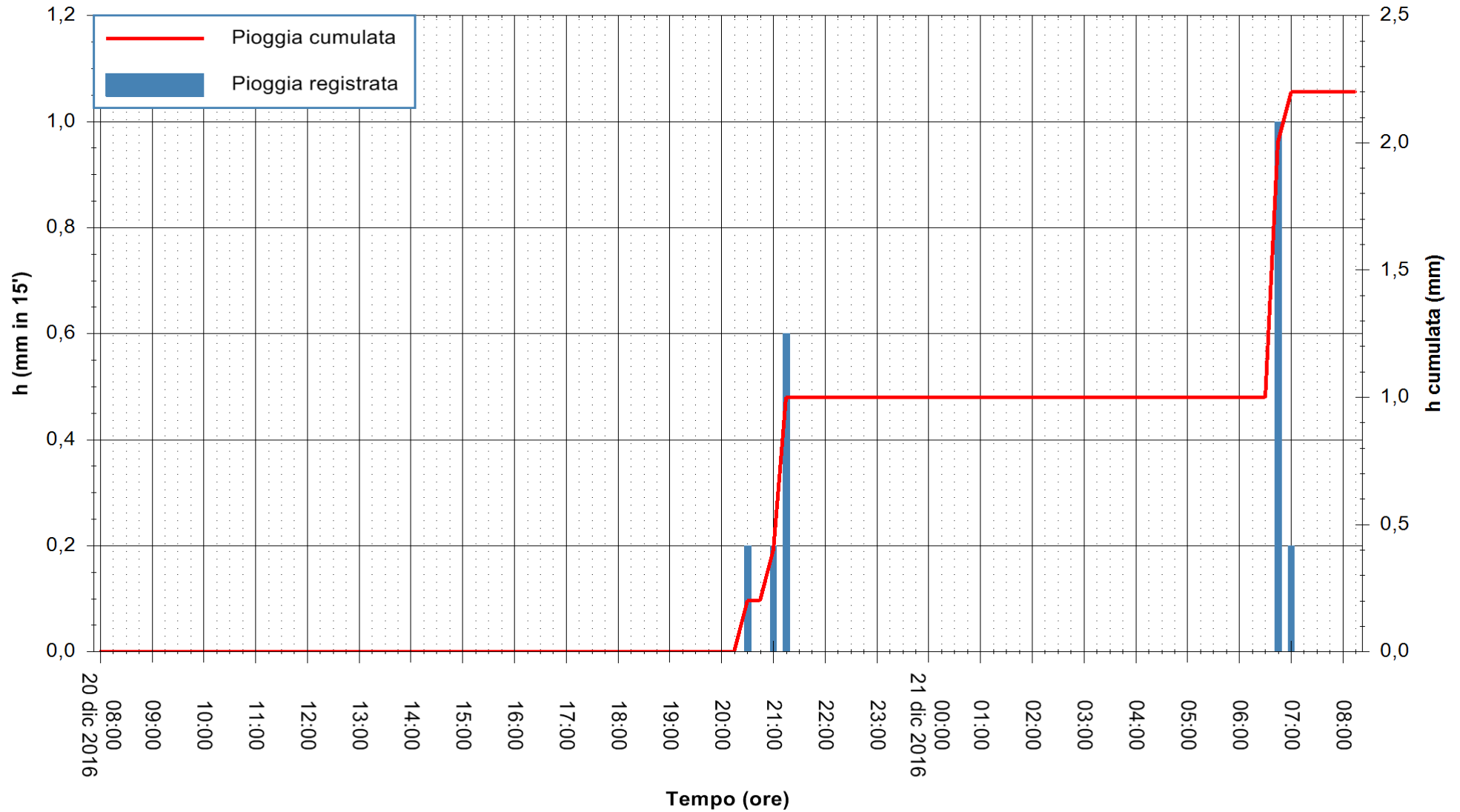


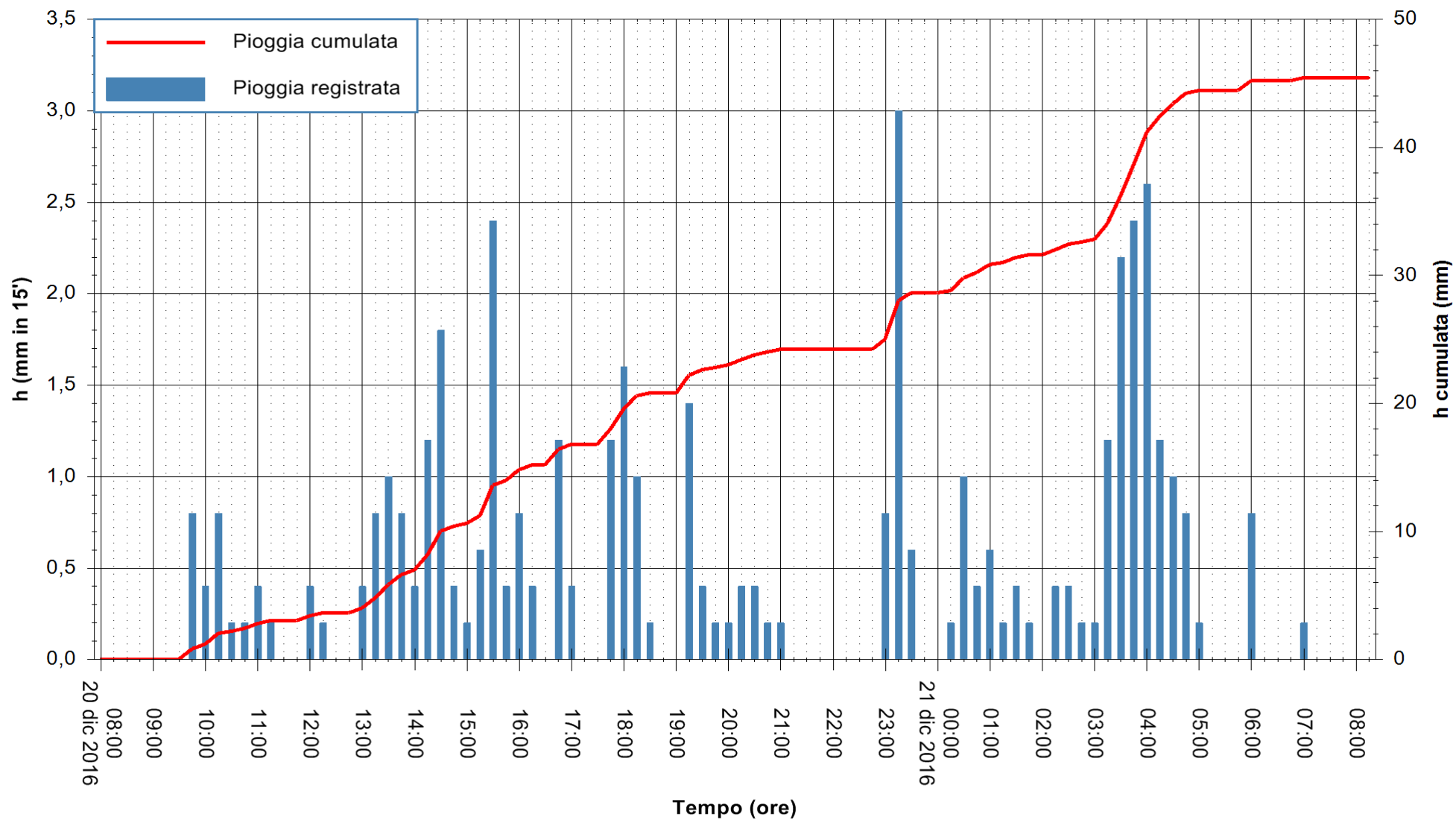
ARPAS
F.to il Dirigente Responsabile
Dott. Giuseppe Bianco

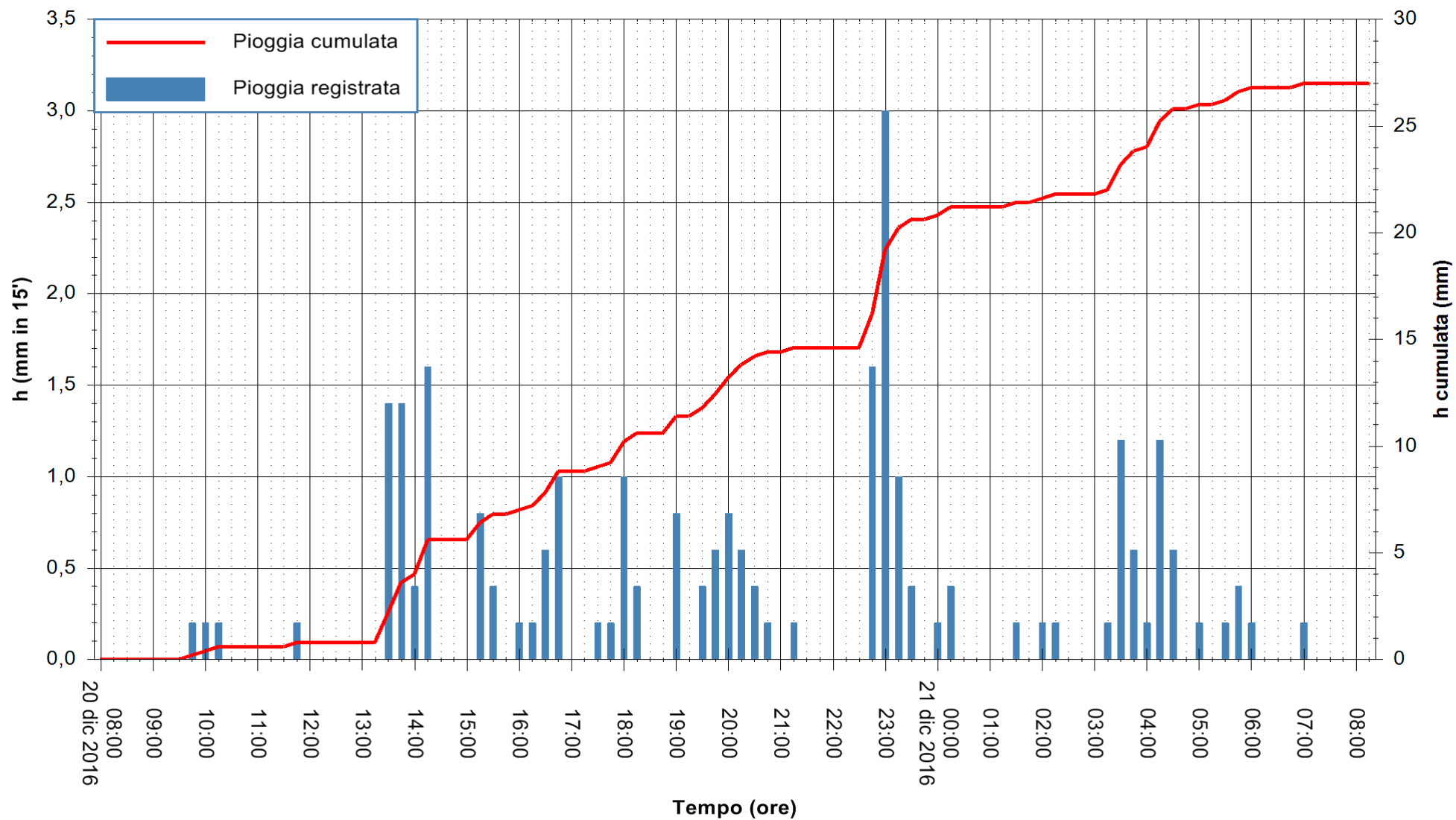
REGIONE AUTONOMA DE SARDIGNA
REGIONE AUTONOMA DELLA SARDEGNA

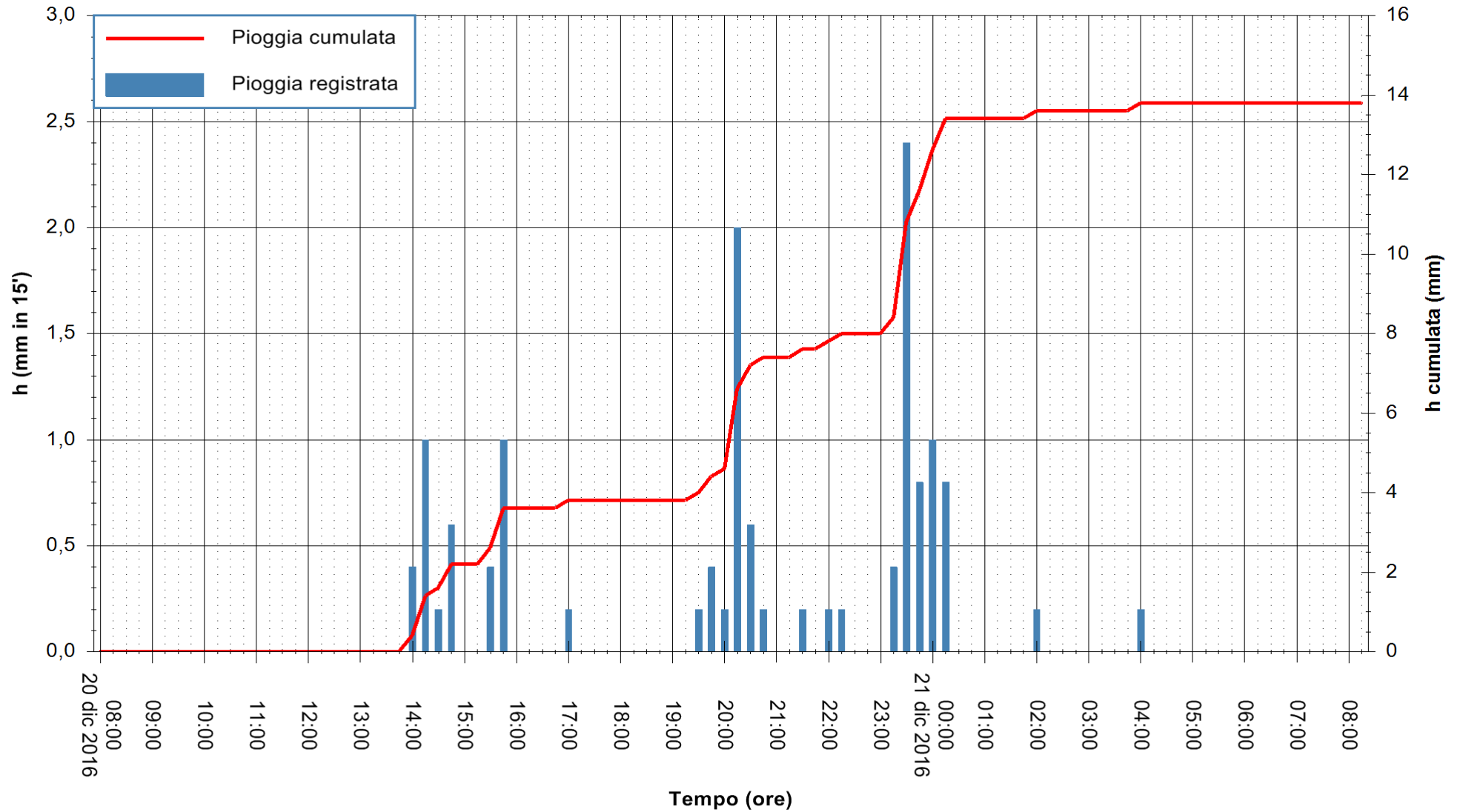


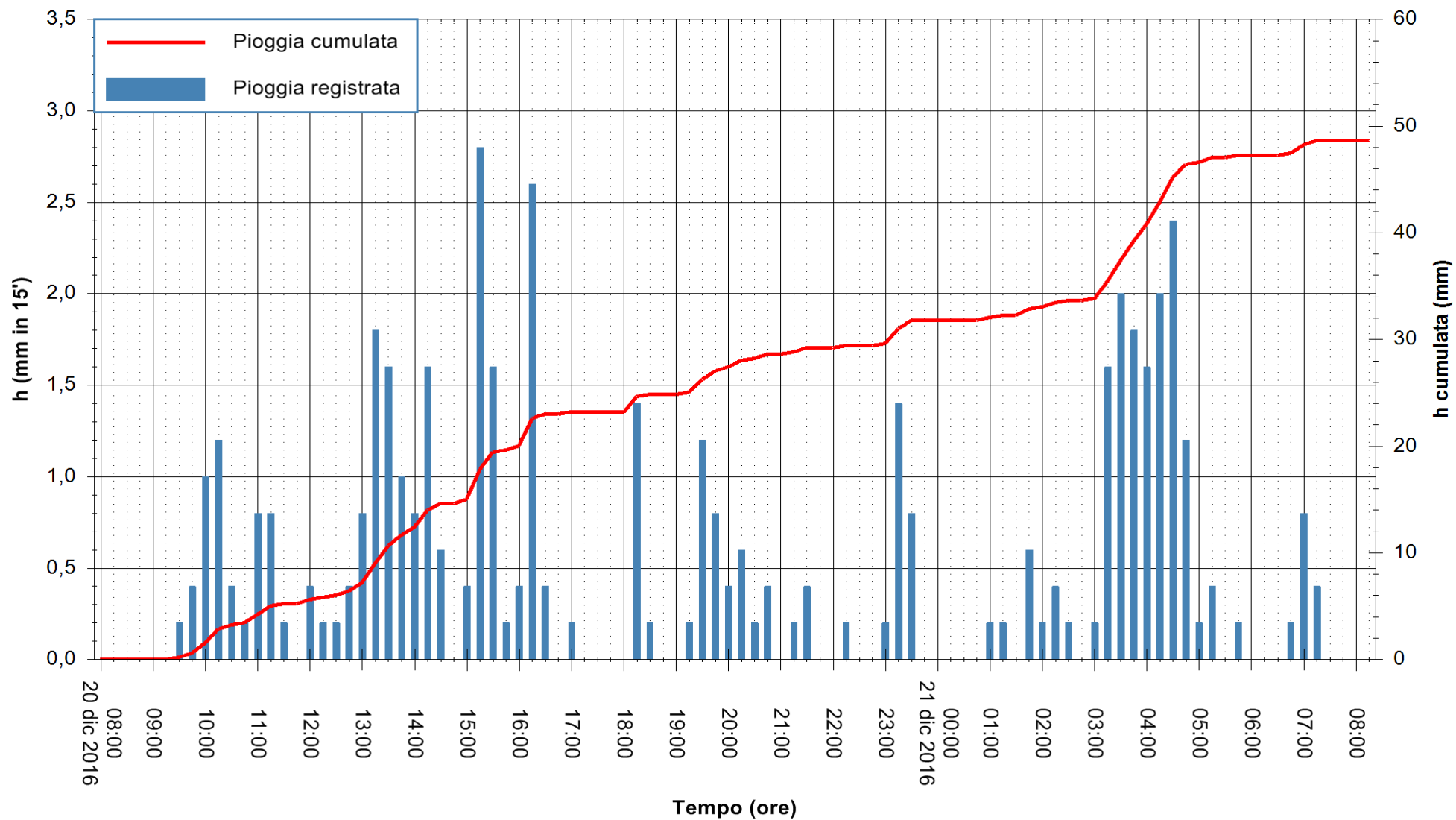


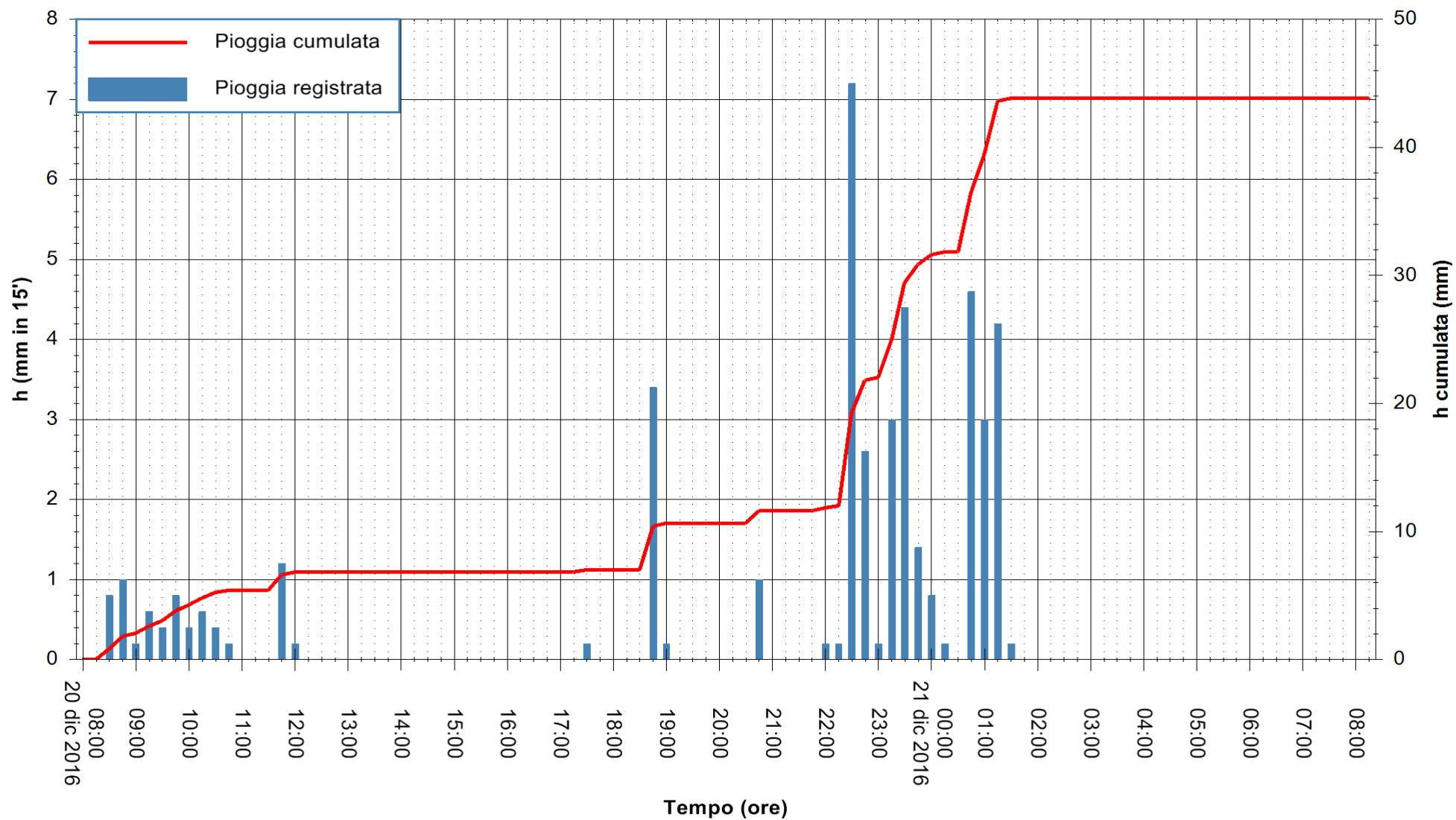


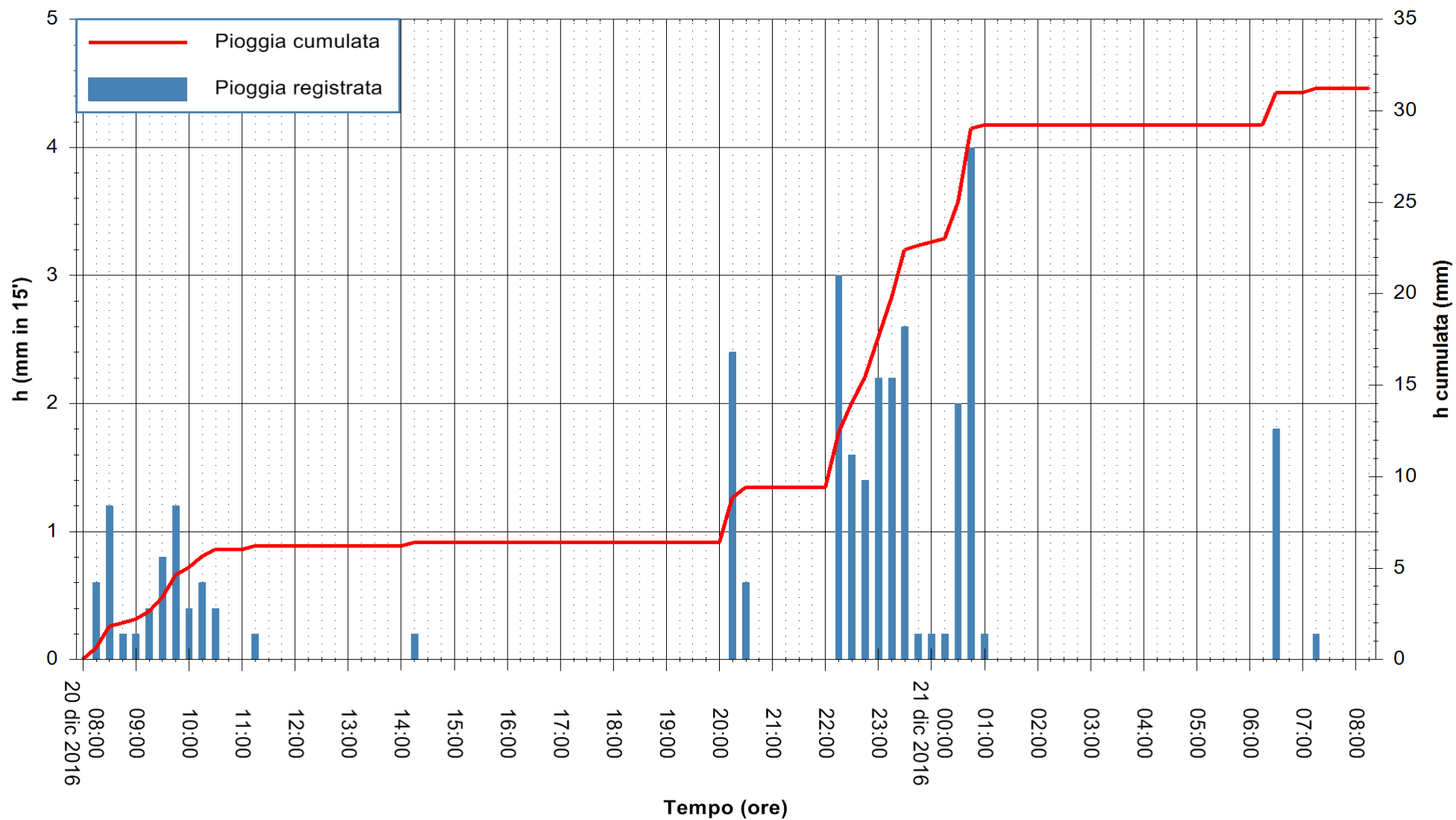


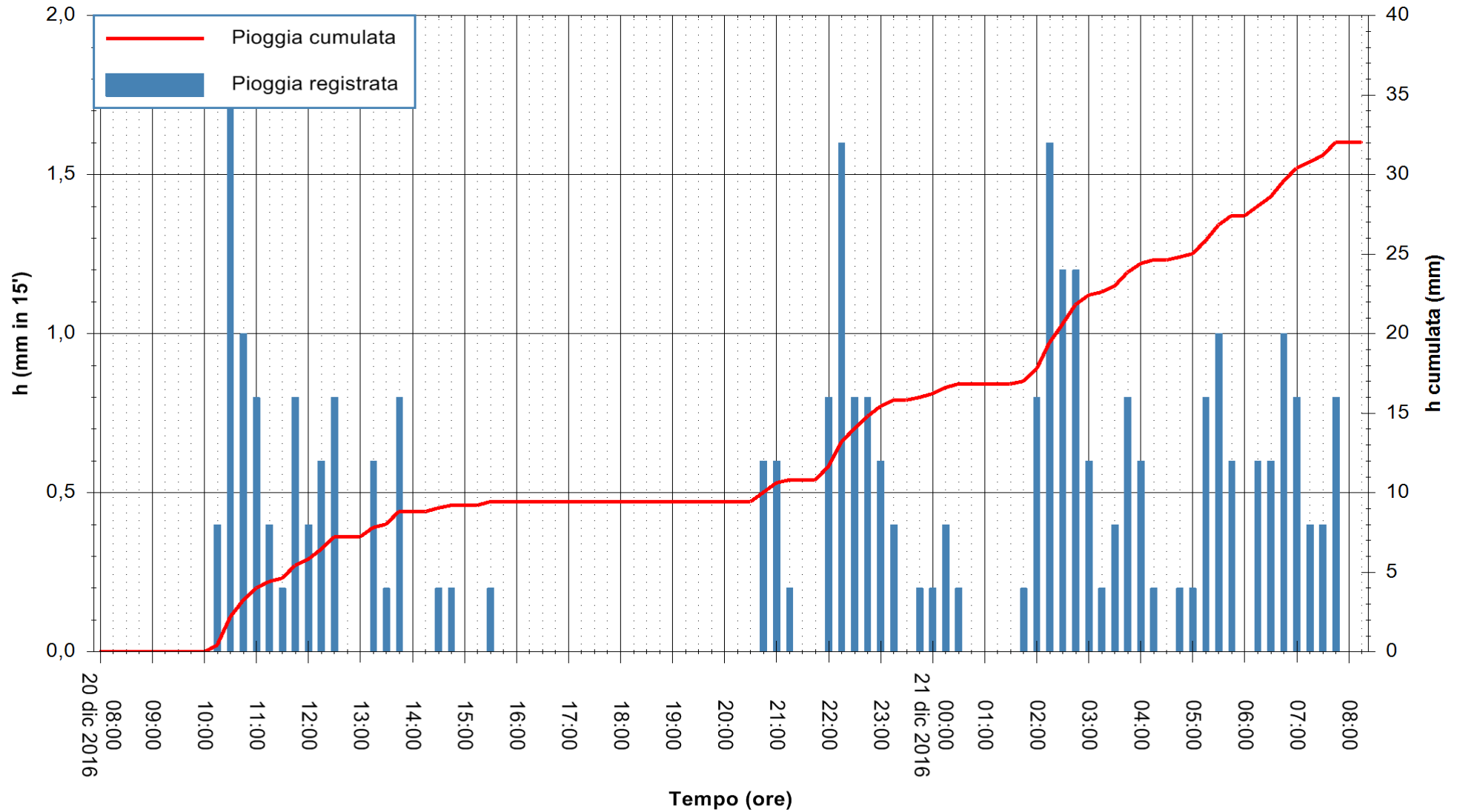


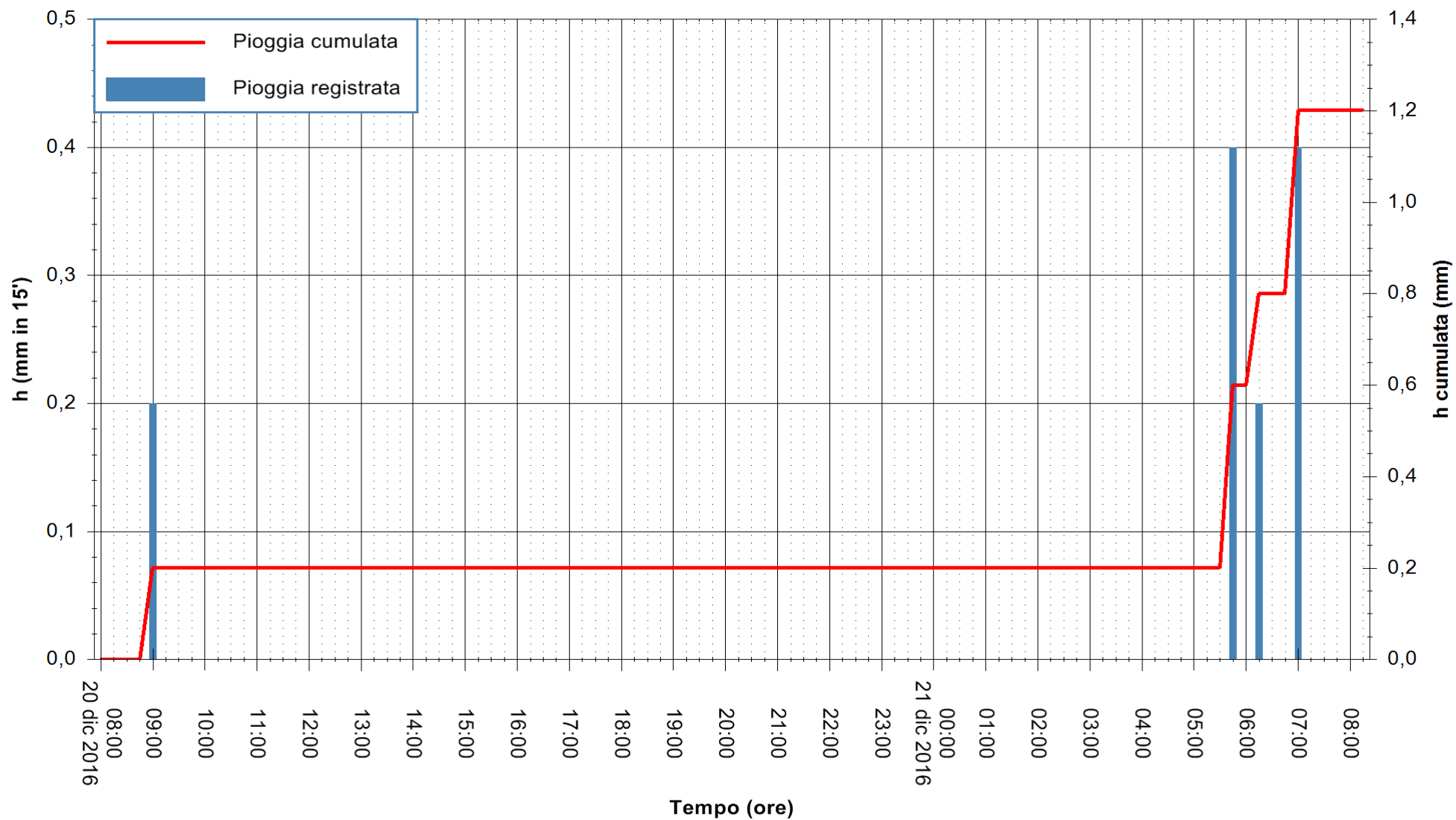


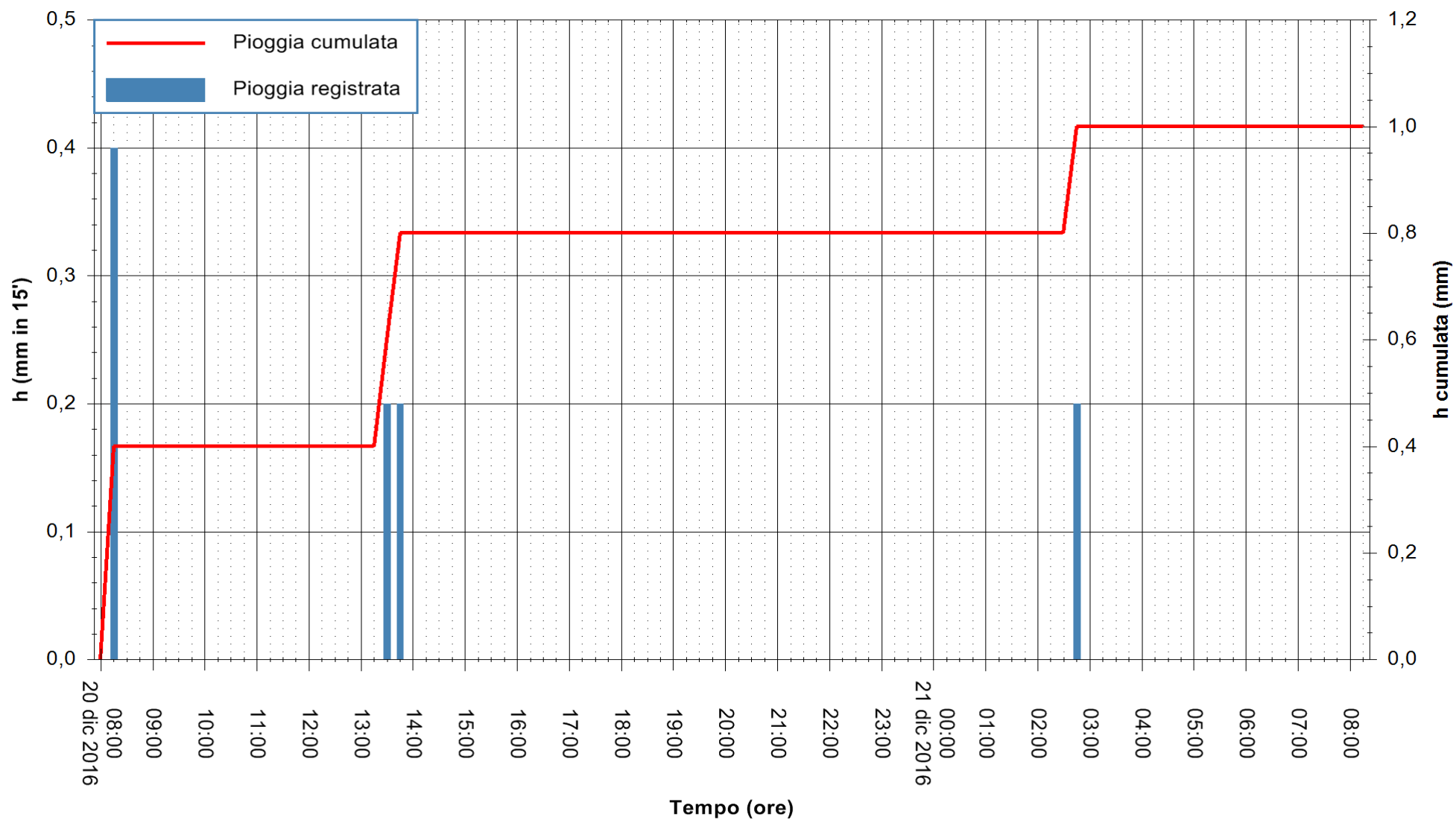


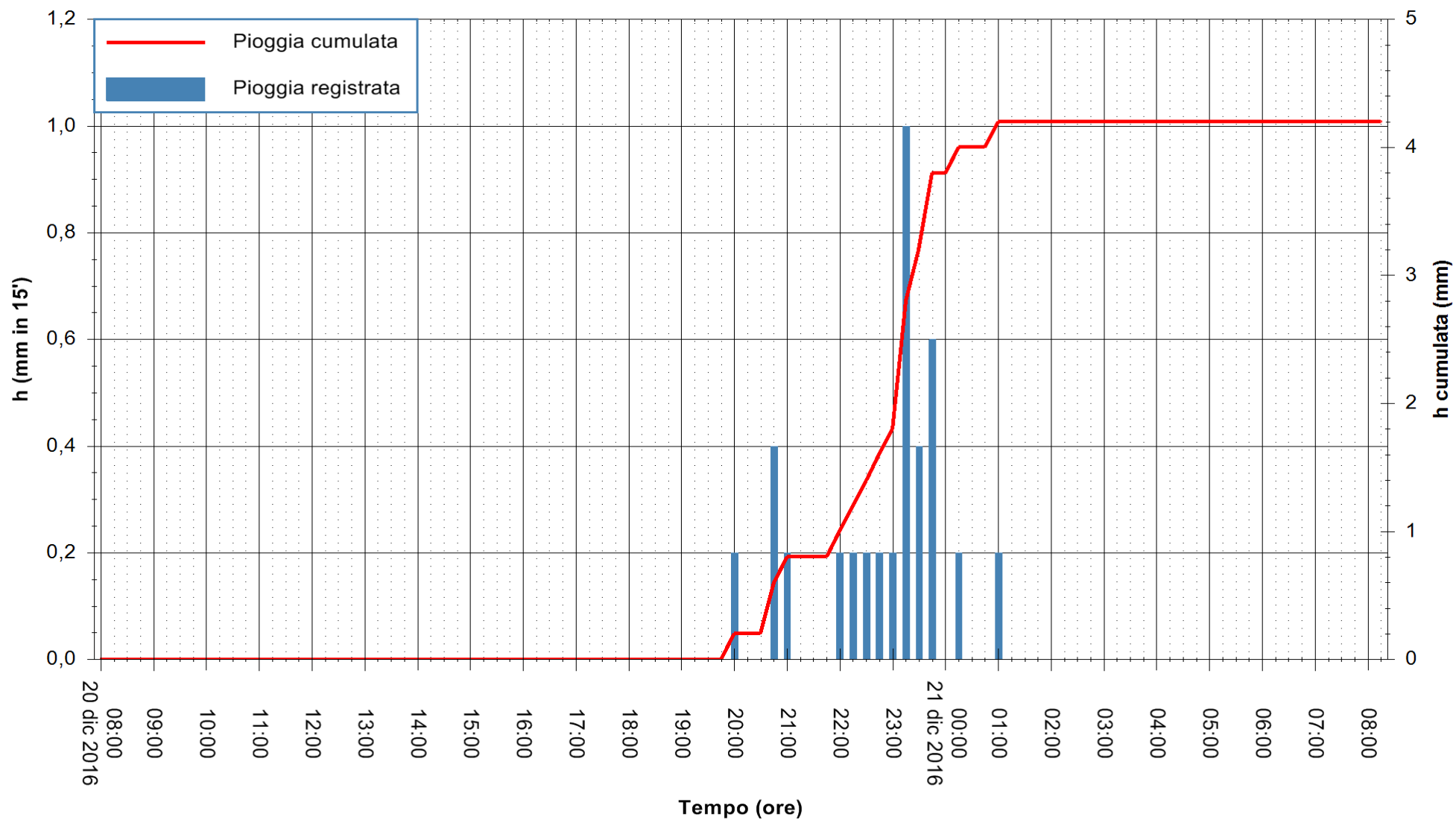


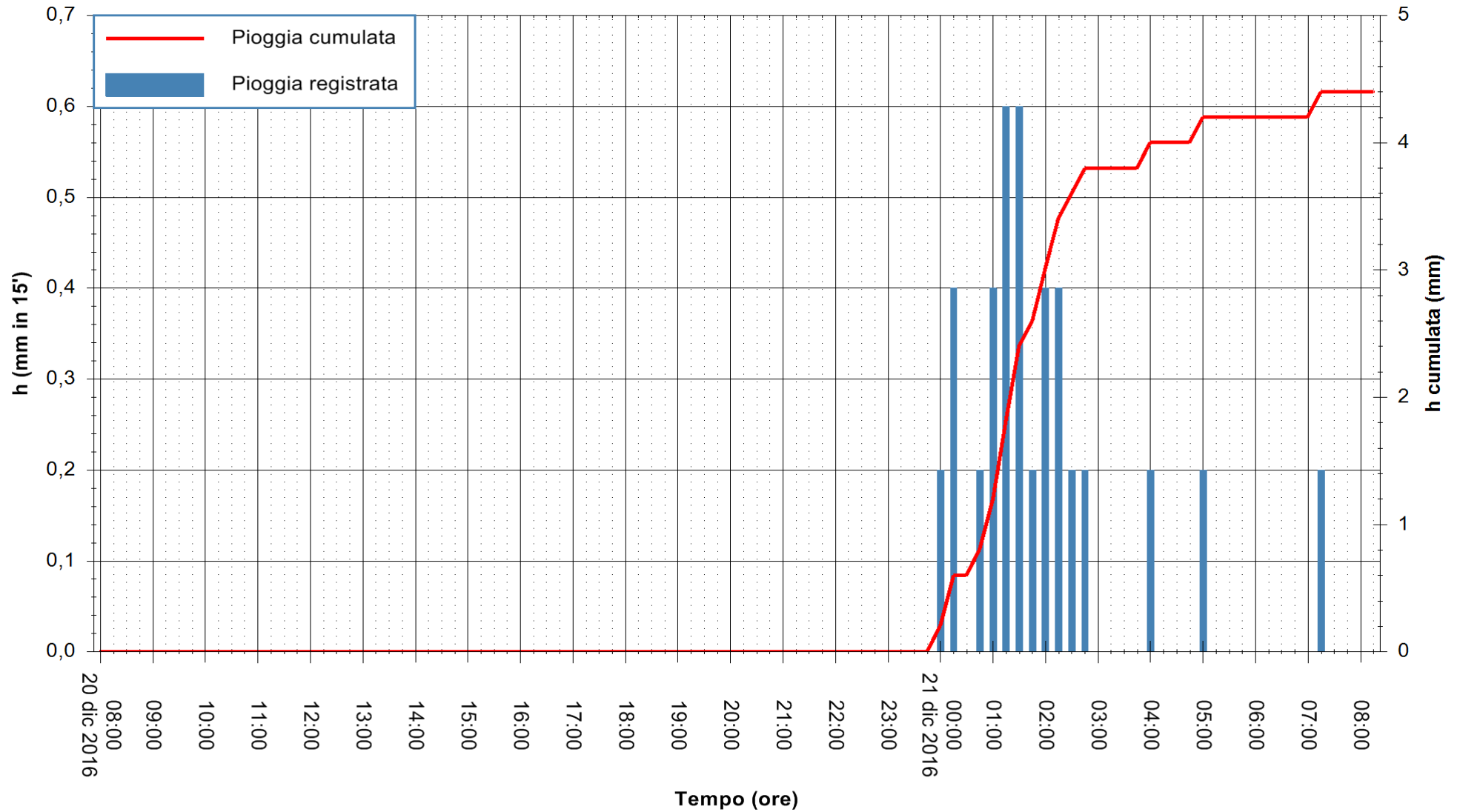


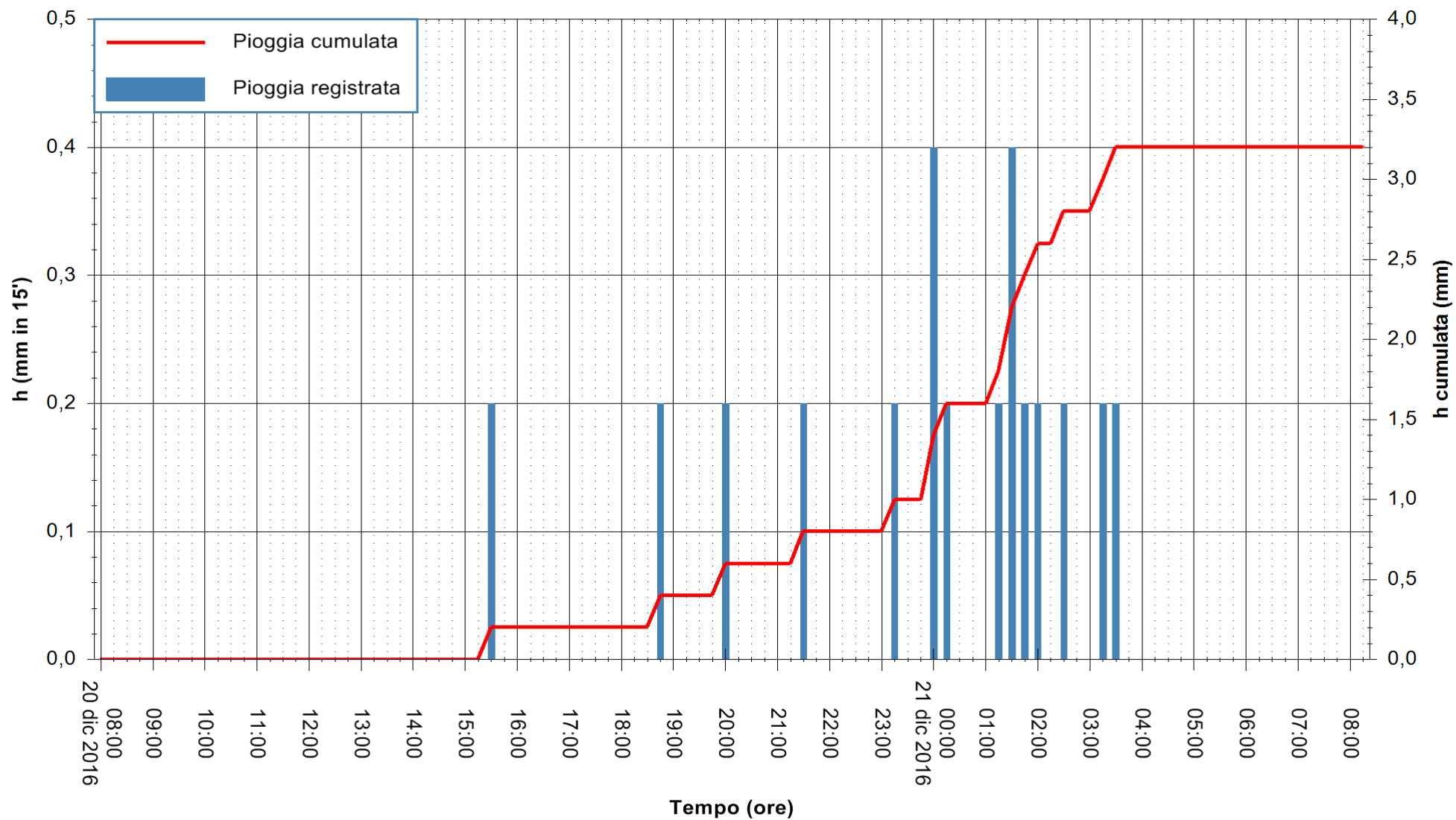


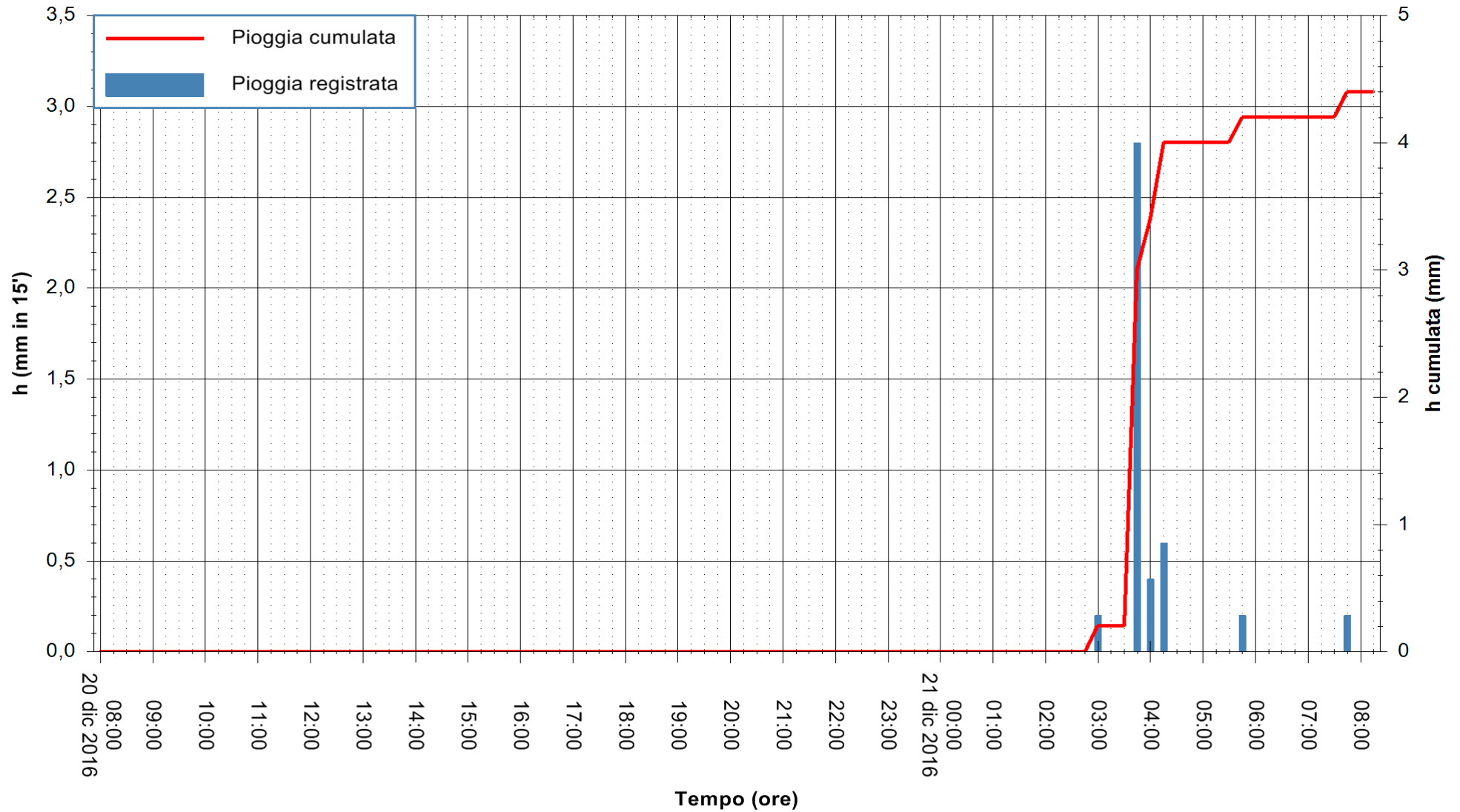


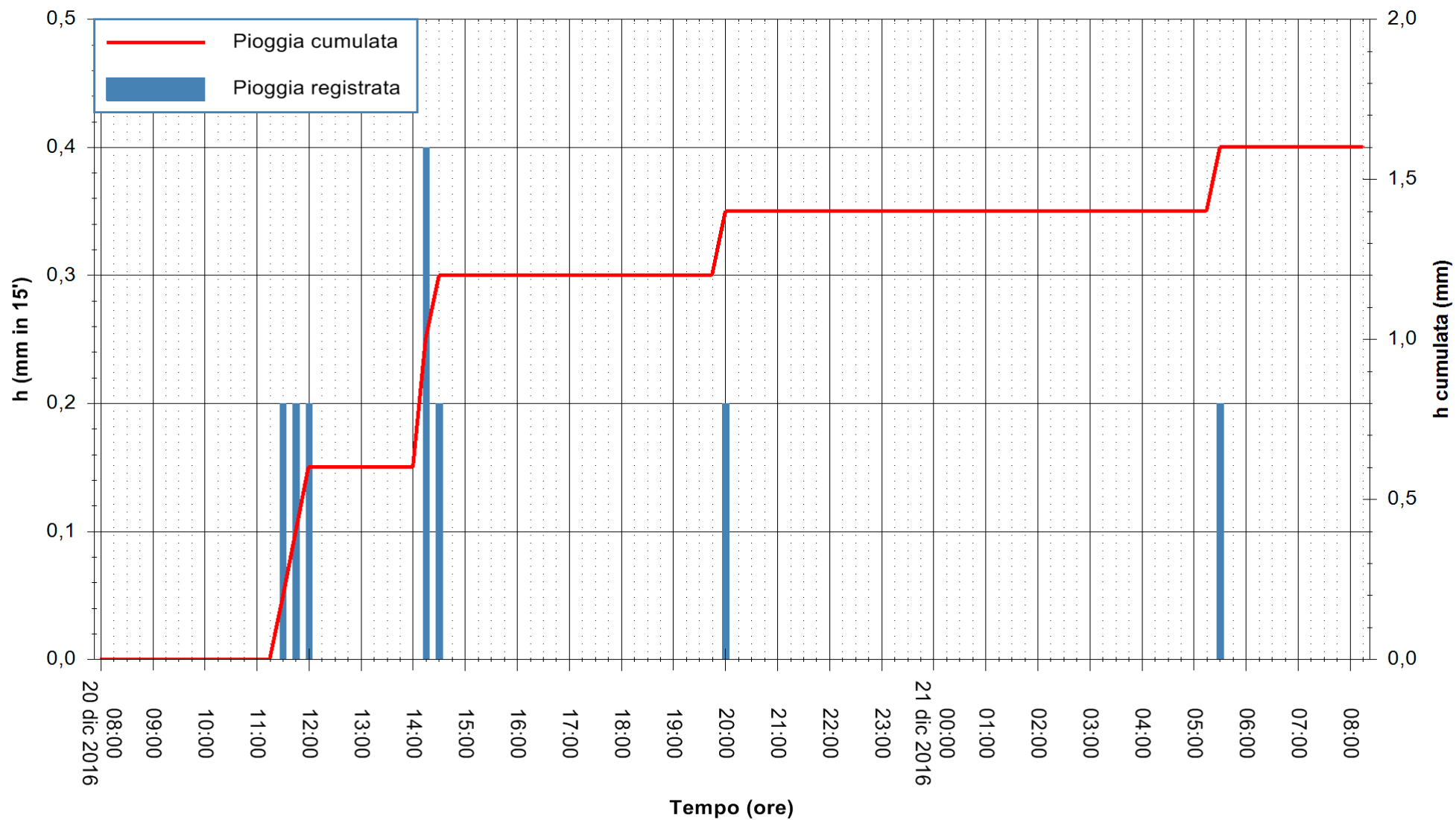


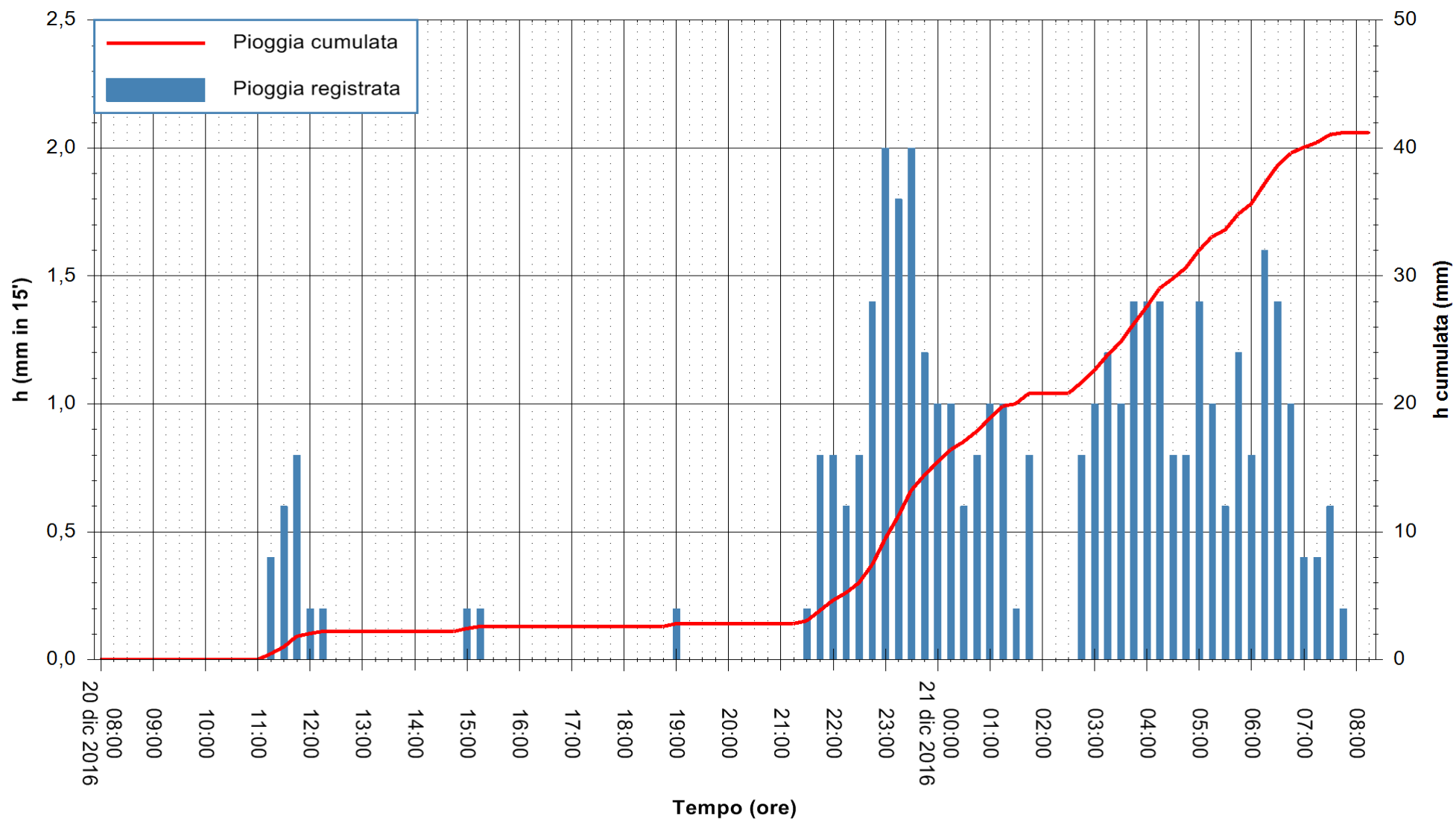


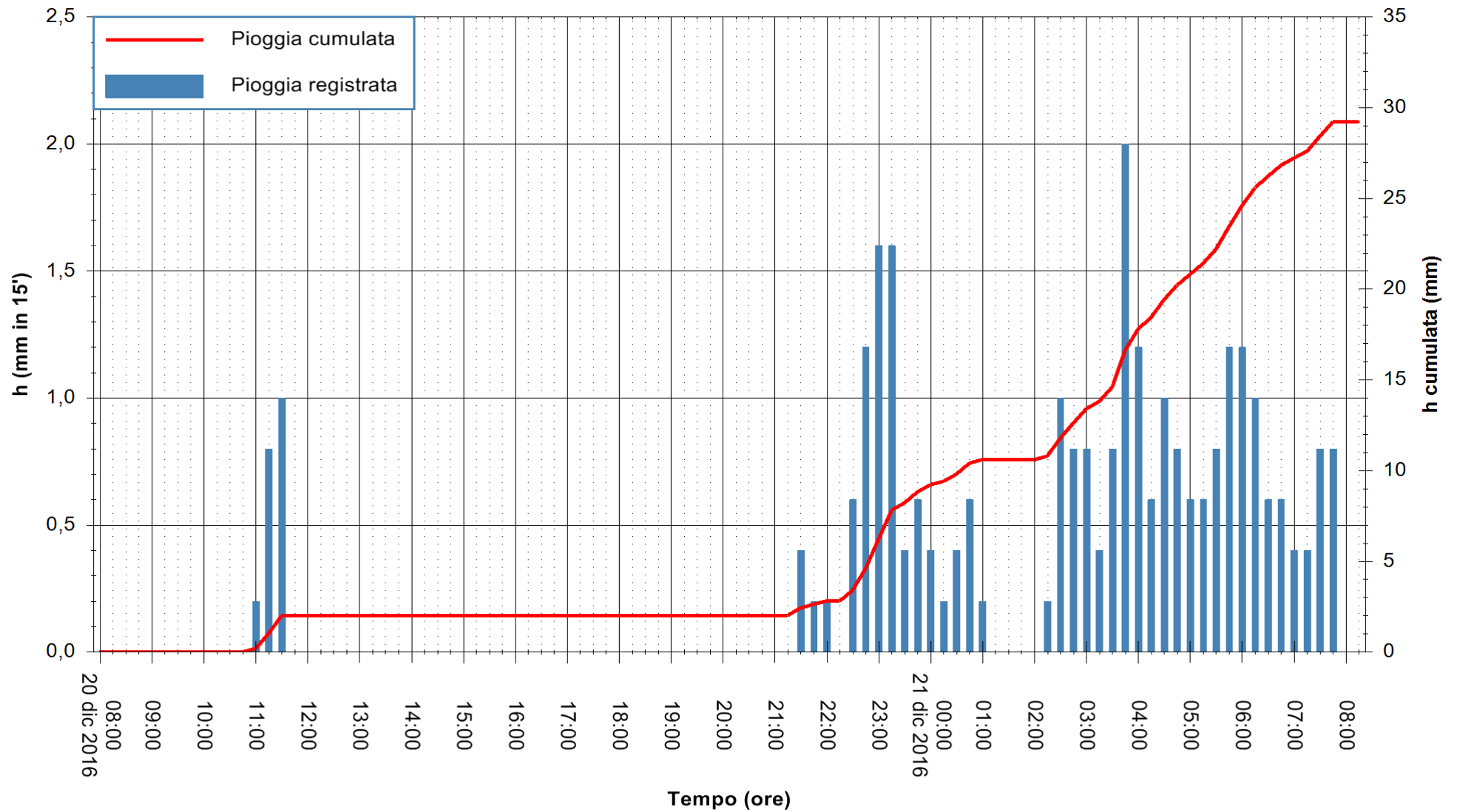


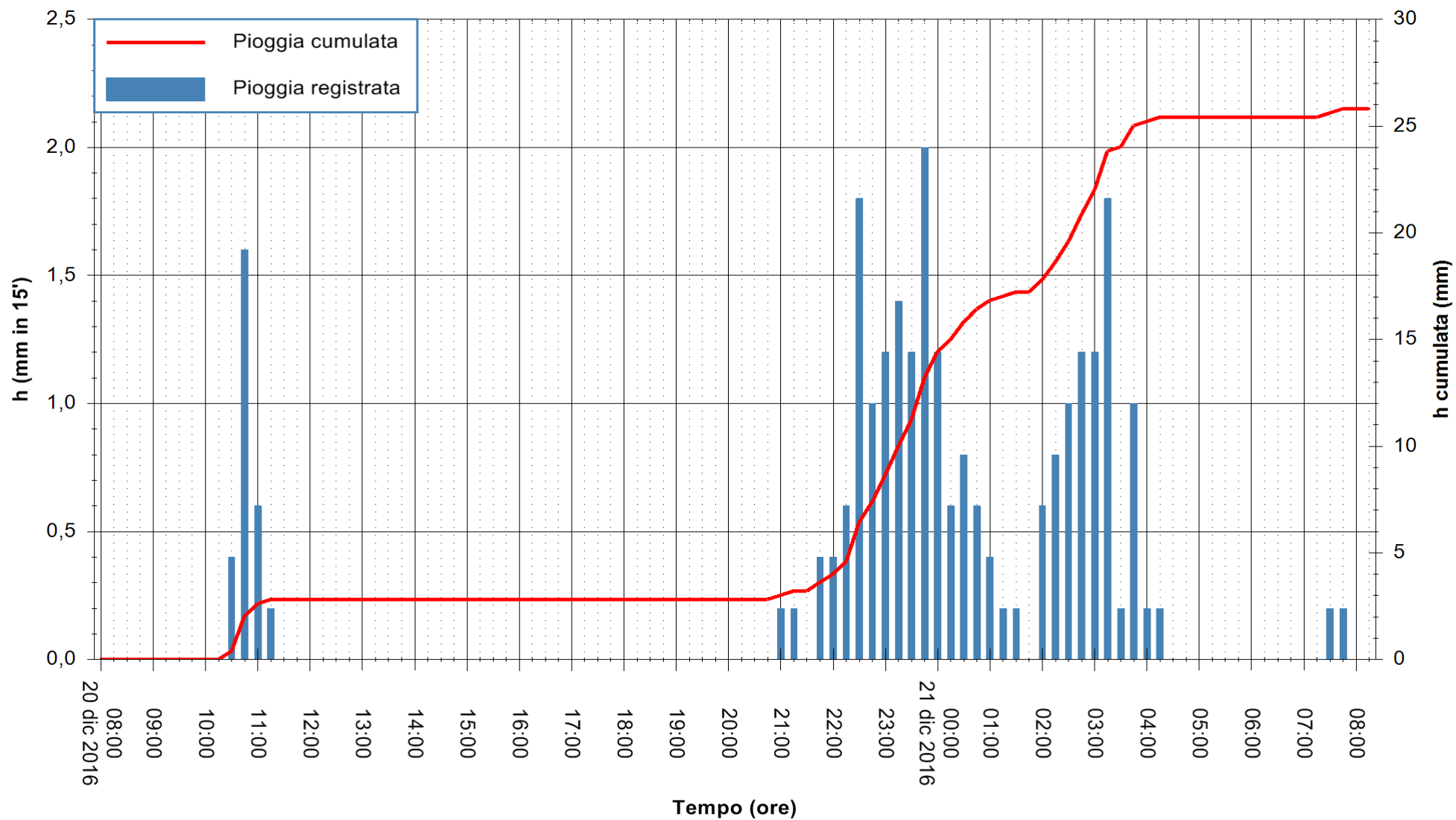


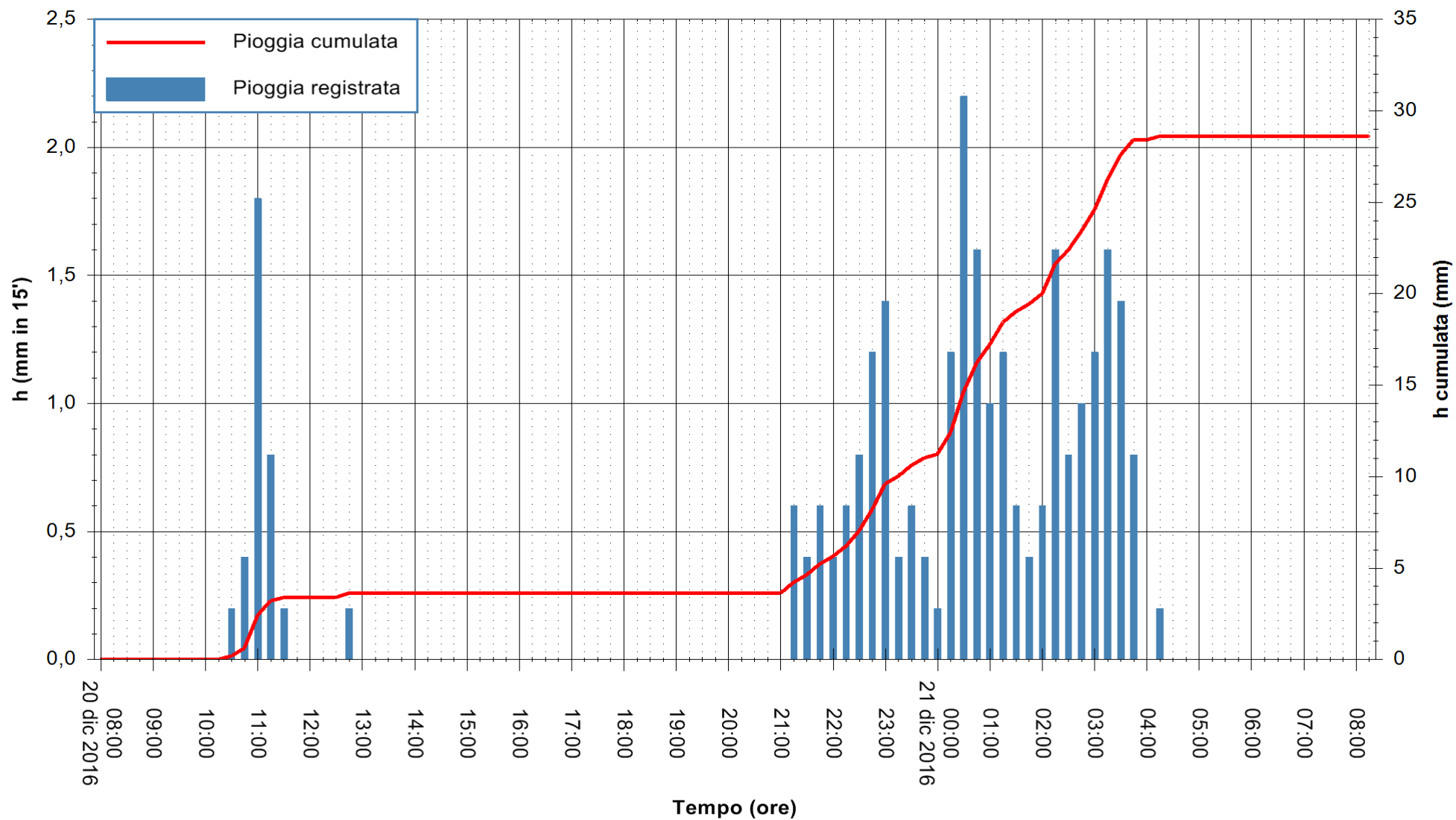


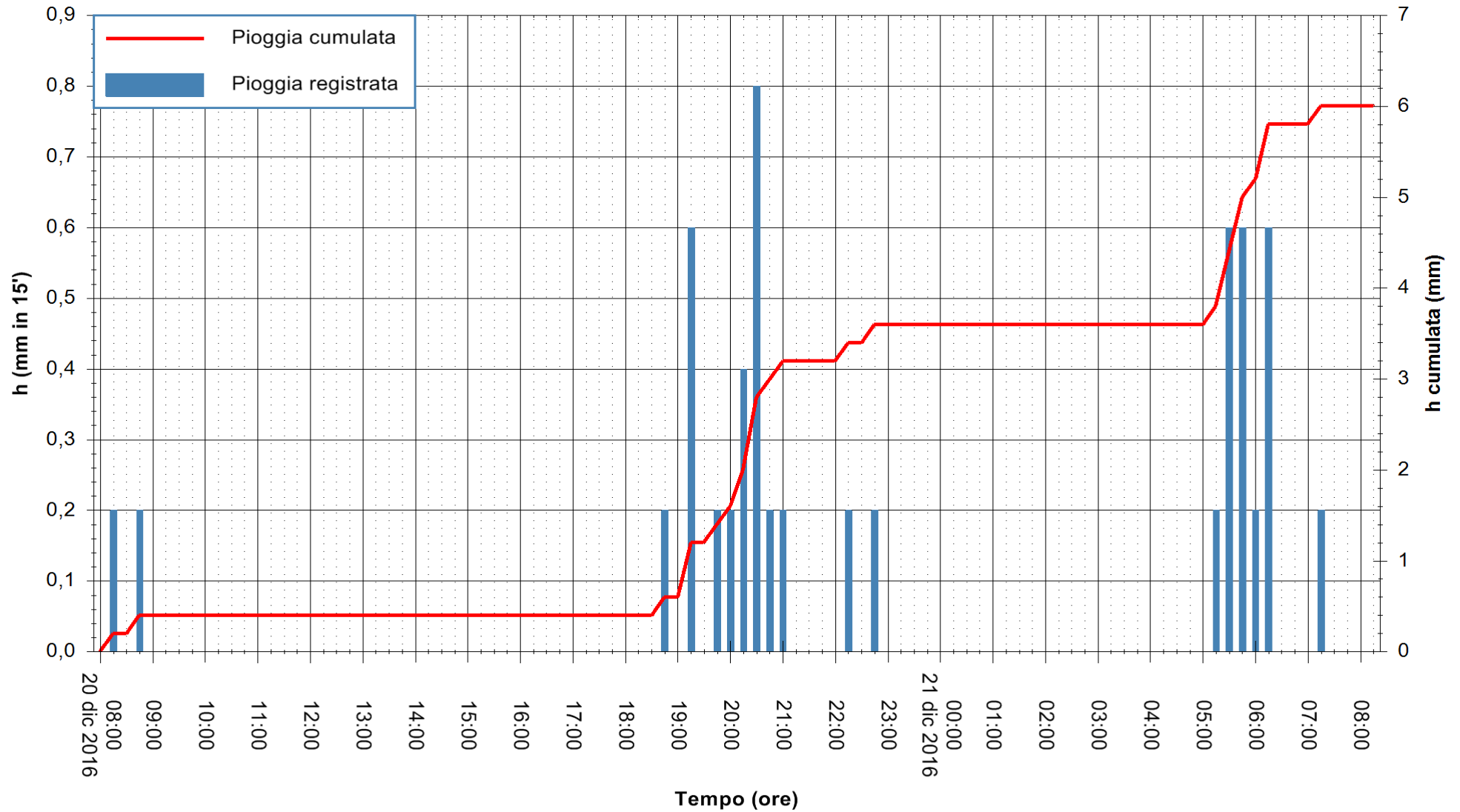


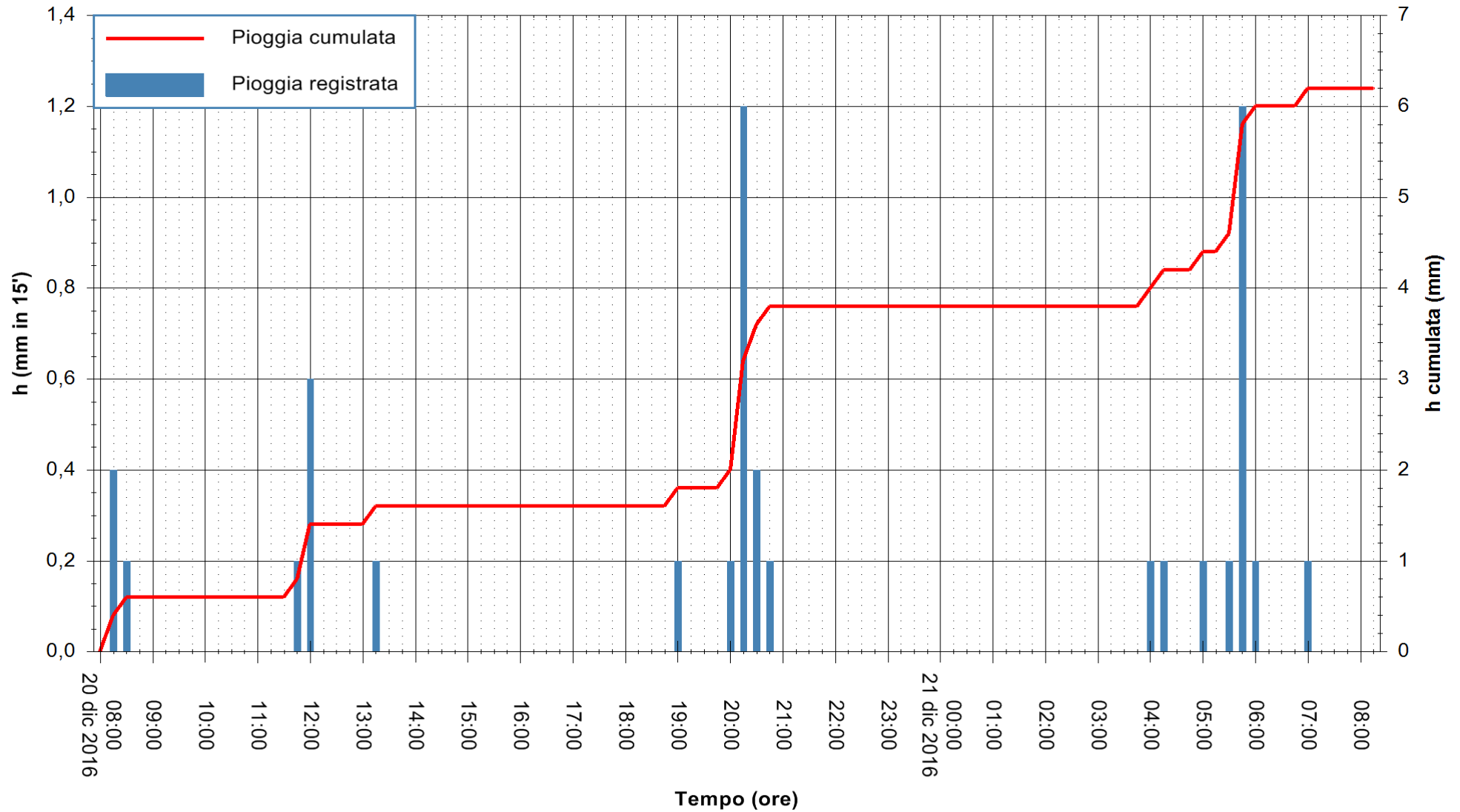












Stazione pluviometrica Punta Sebera
 Area PUNTA SEBERA
 Pioggia registrata nelle ultime 24 ore
 Consultazione alle ore 09:11 del 21/12/2016



ARPAS
 F.to il Dirigente Responsabile
 Dott. Giuseppe Bianco

REGIONE AUTONOMA DE SARDIGNA
 REGIONE AUTONOMA DELLA SARDEGNA

