

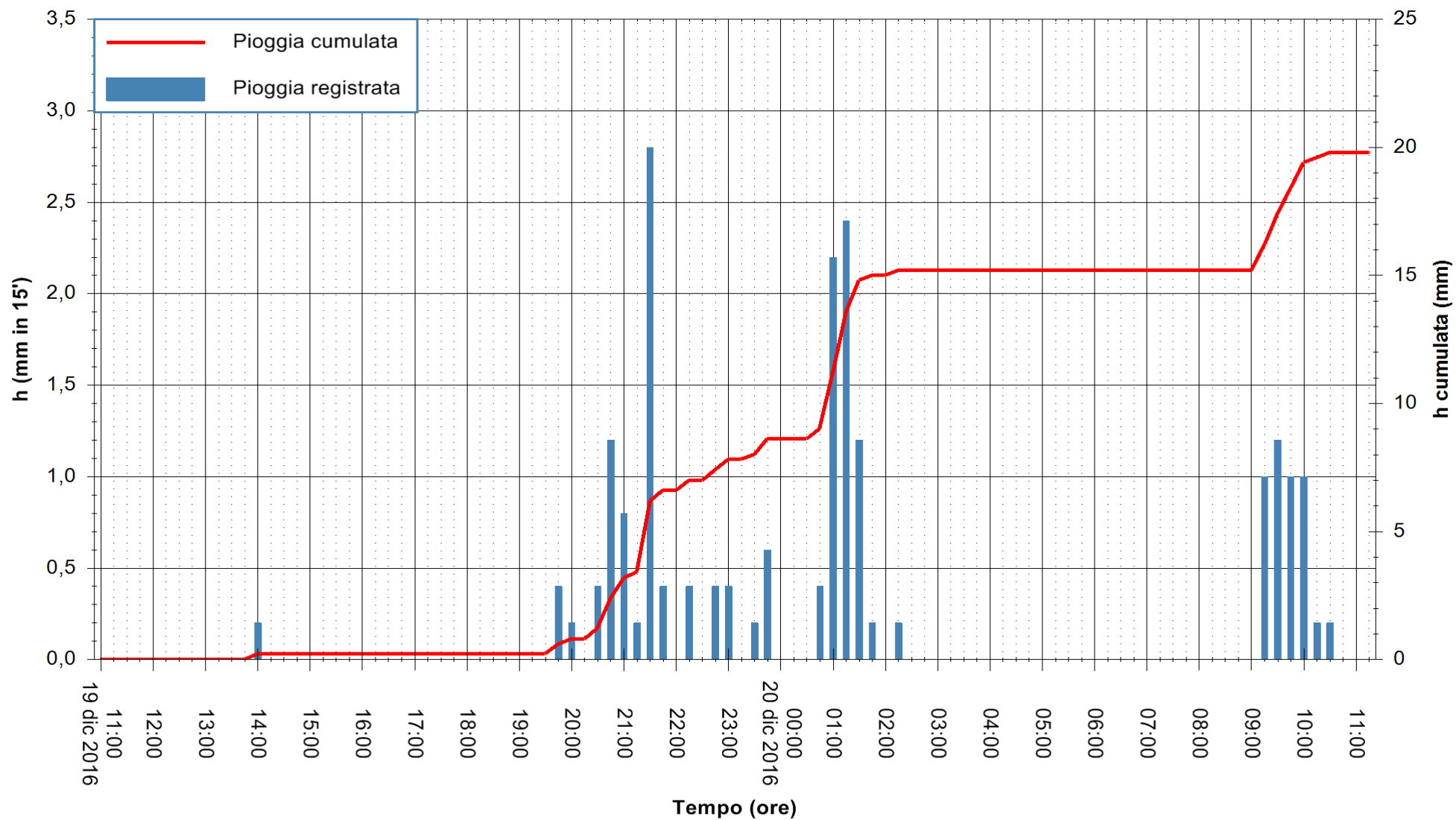


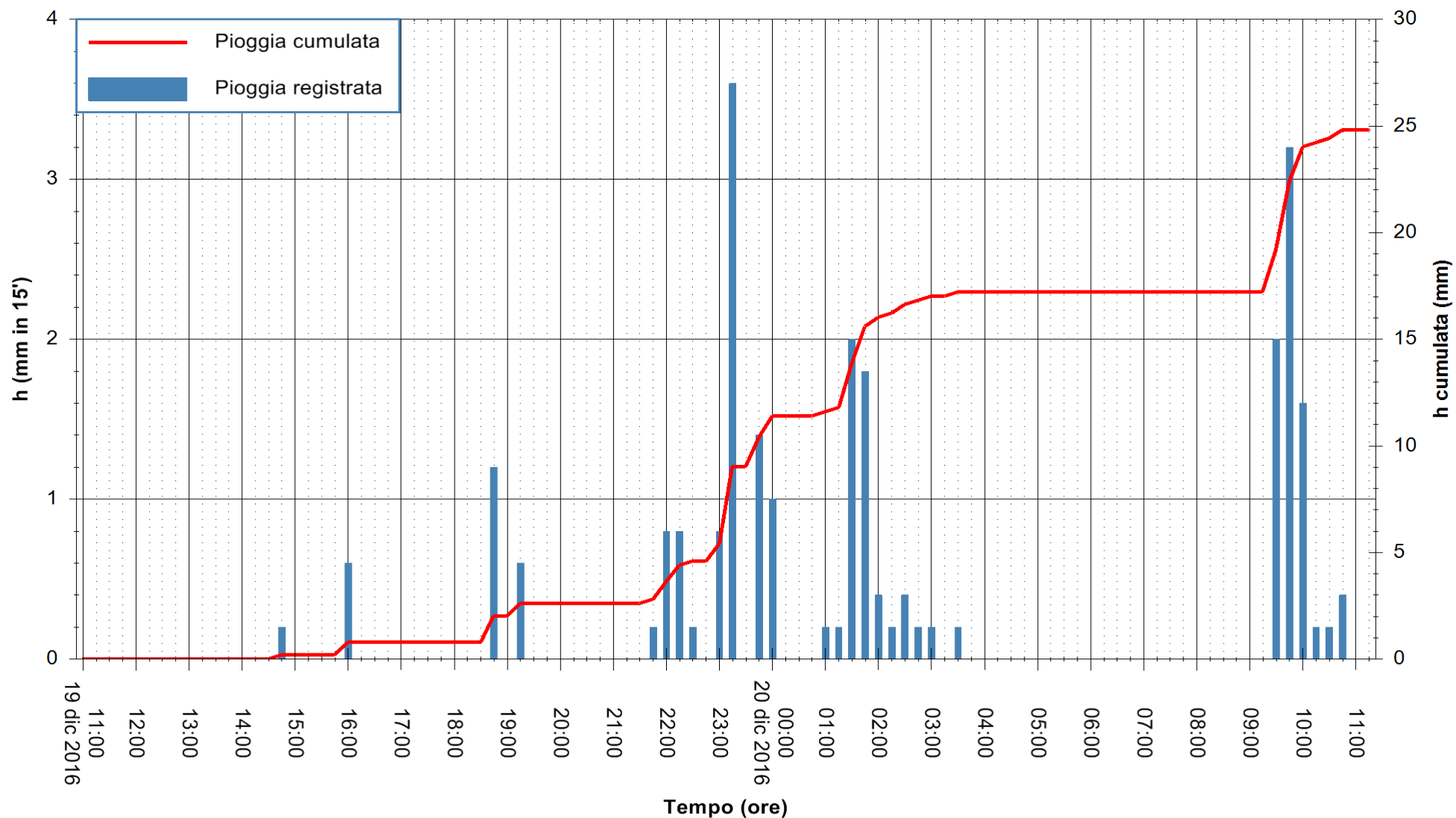
Stazione pluviometrica Fluminimannu a Decimomannu  
Area DECIMOMANNU  
Pioggia registrata nelle ultime 24 ore  
Consultazione alle ore 12:11 del 20/12/2016

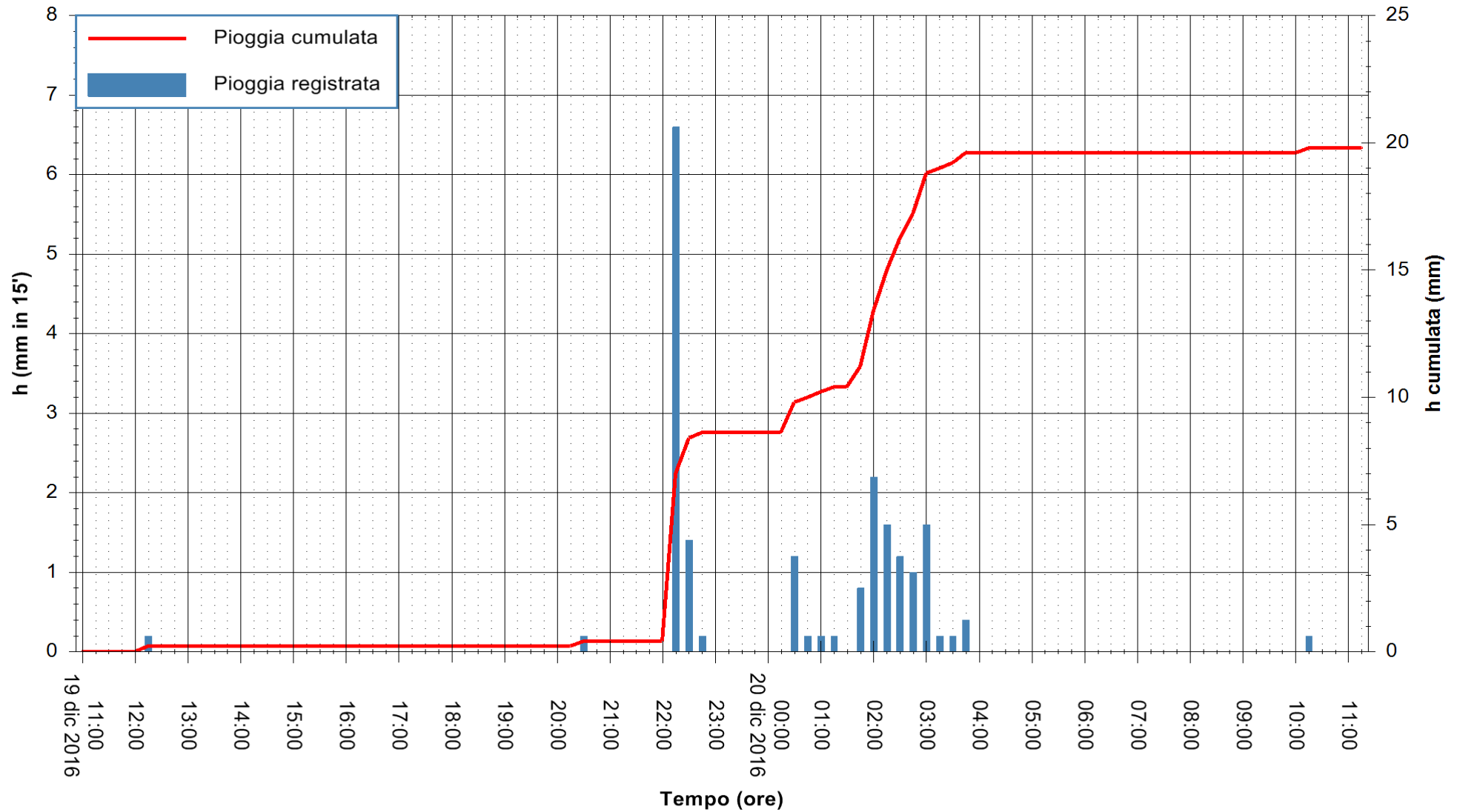


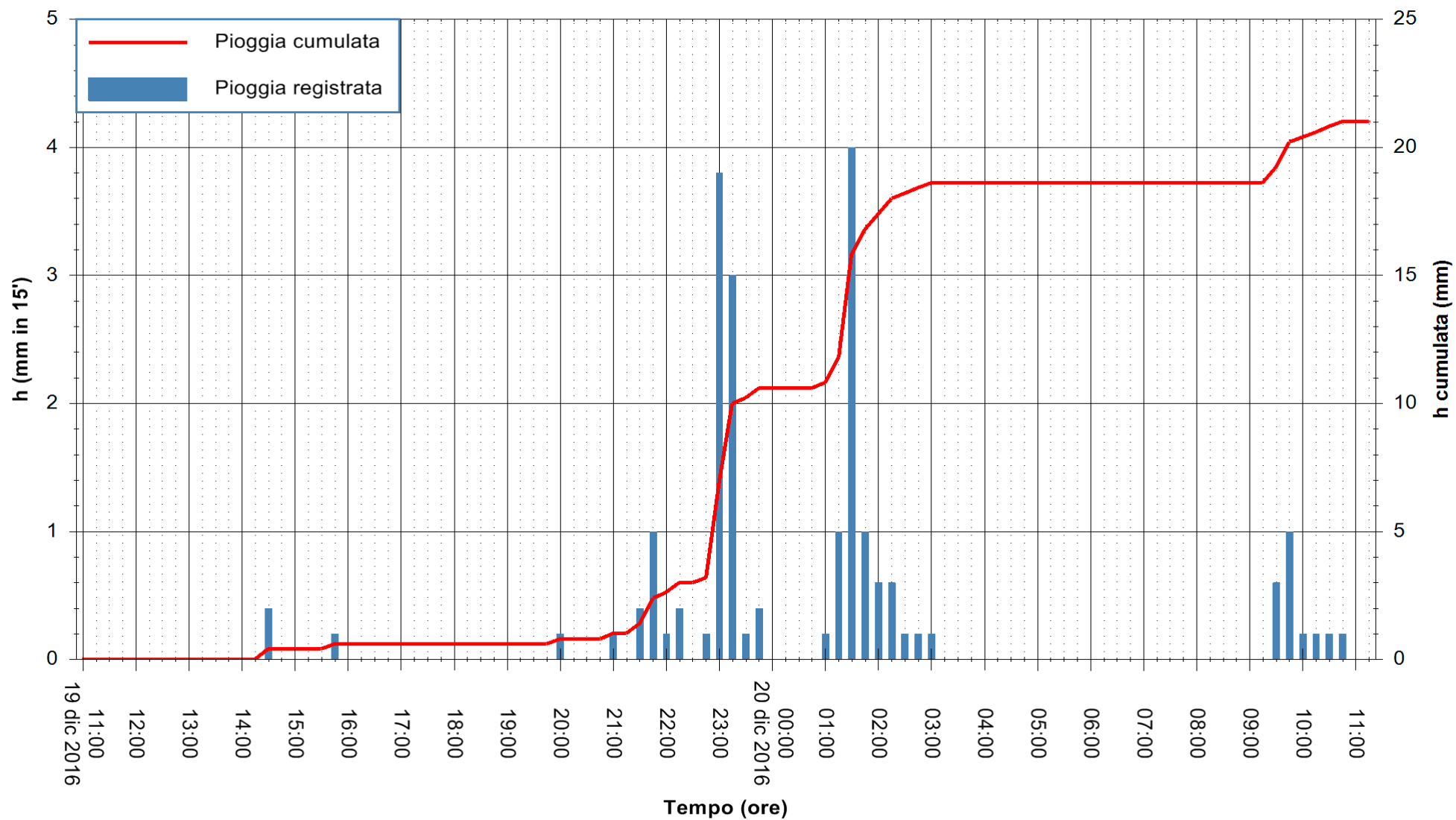
ARPAS  
F.to il Dirigente Responsabile  
Dott. Giuseppe Bianco

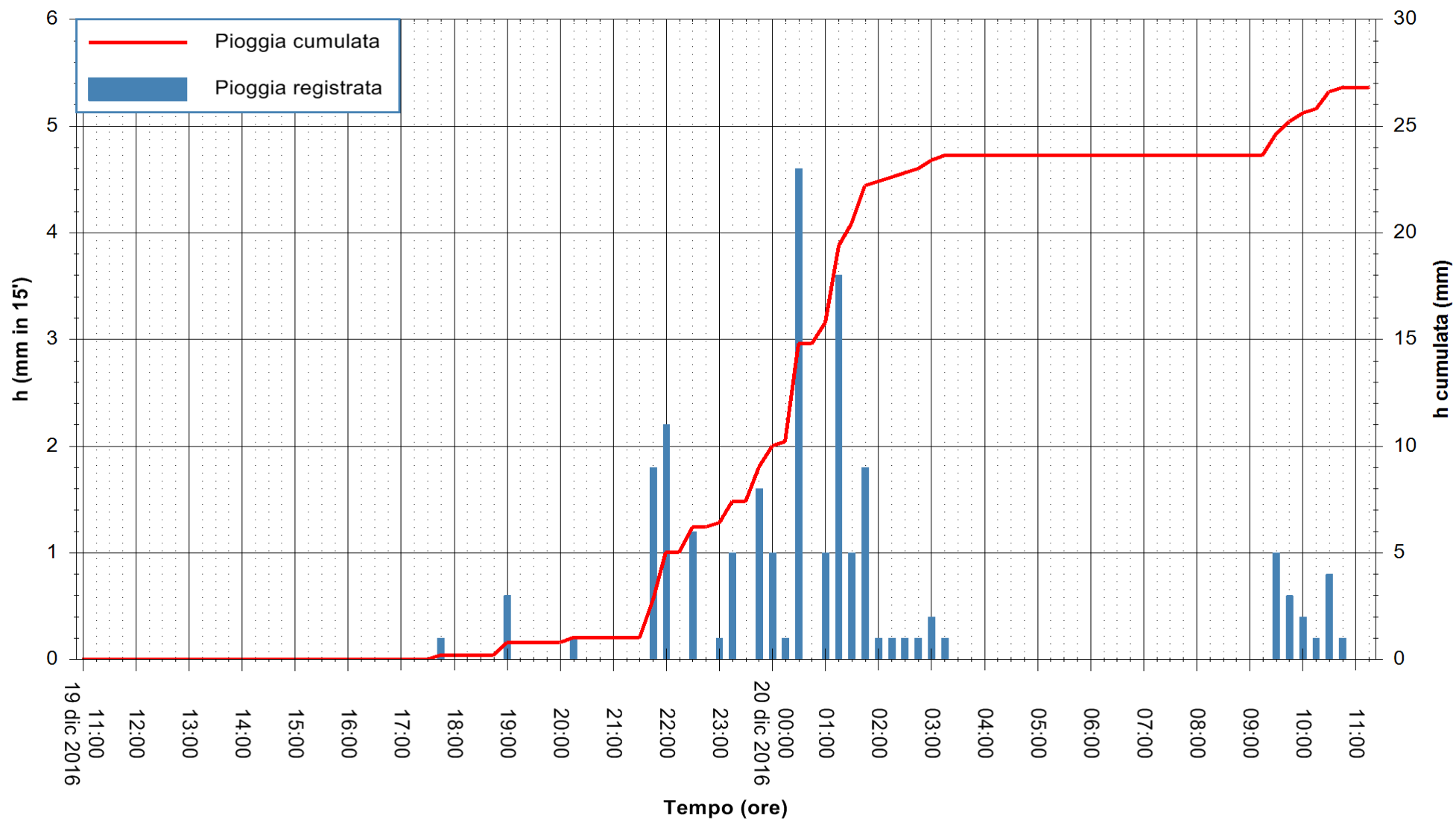
REGIONE AUTÒNOMA DE SARDIGNA  
REGIONE AUTONOMA DELLA SARDEGNA

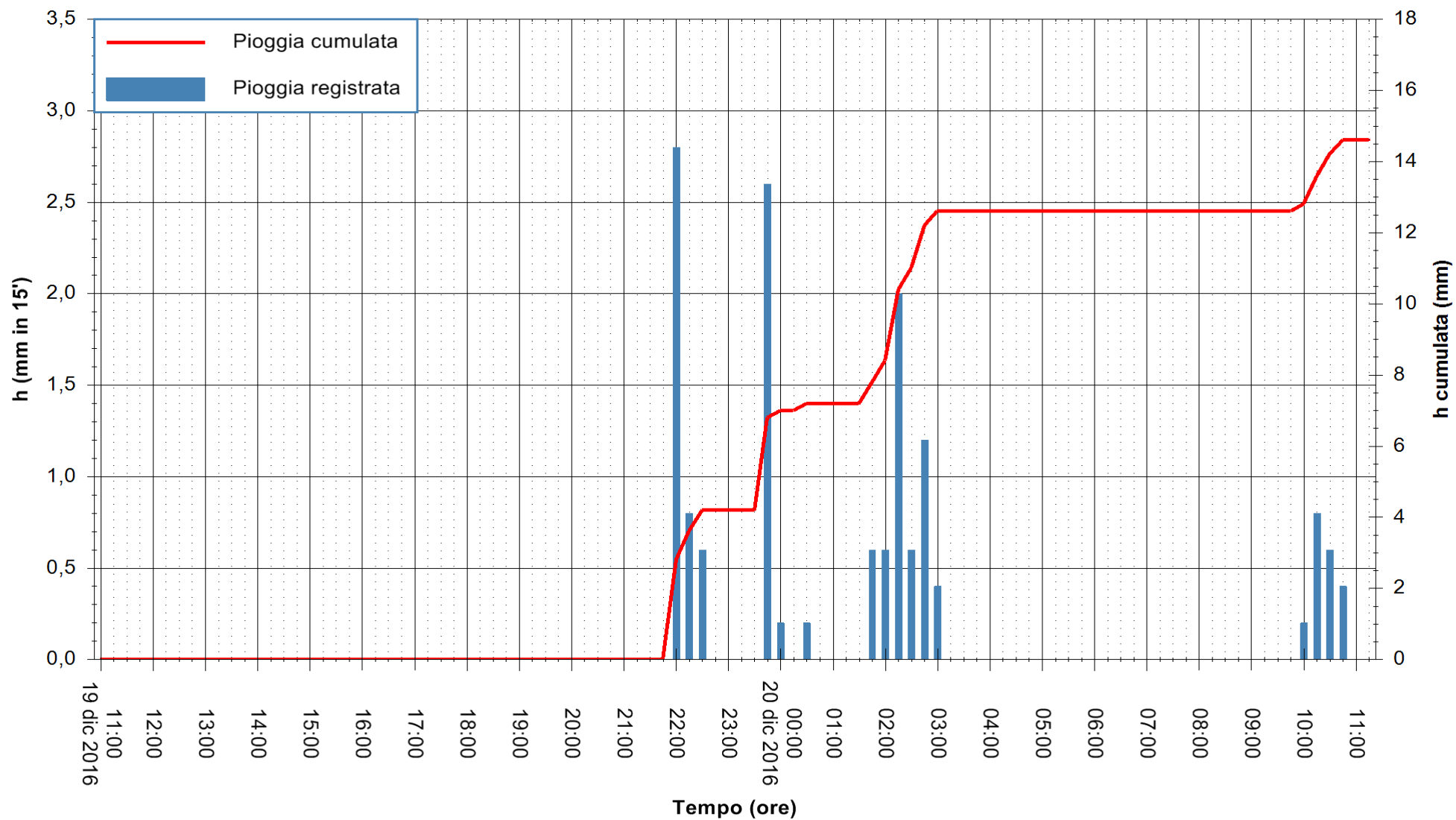


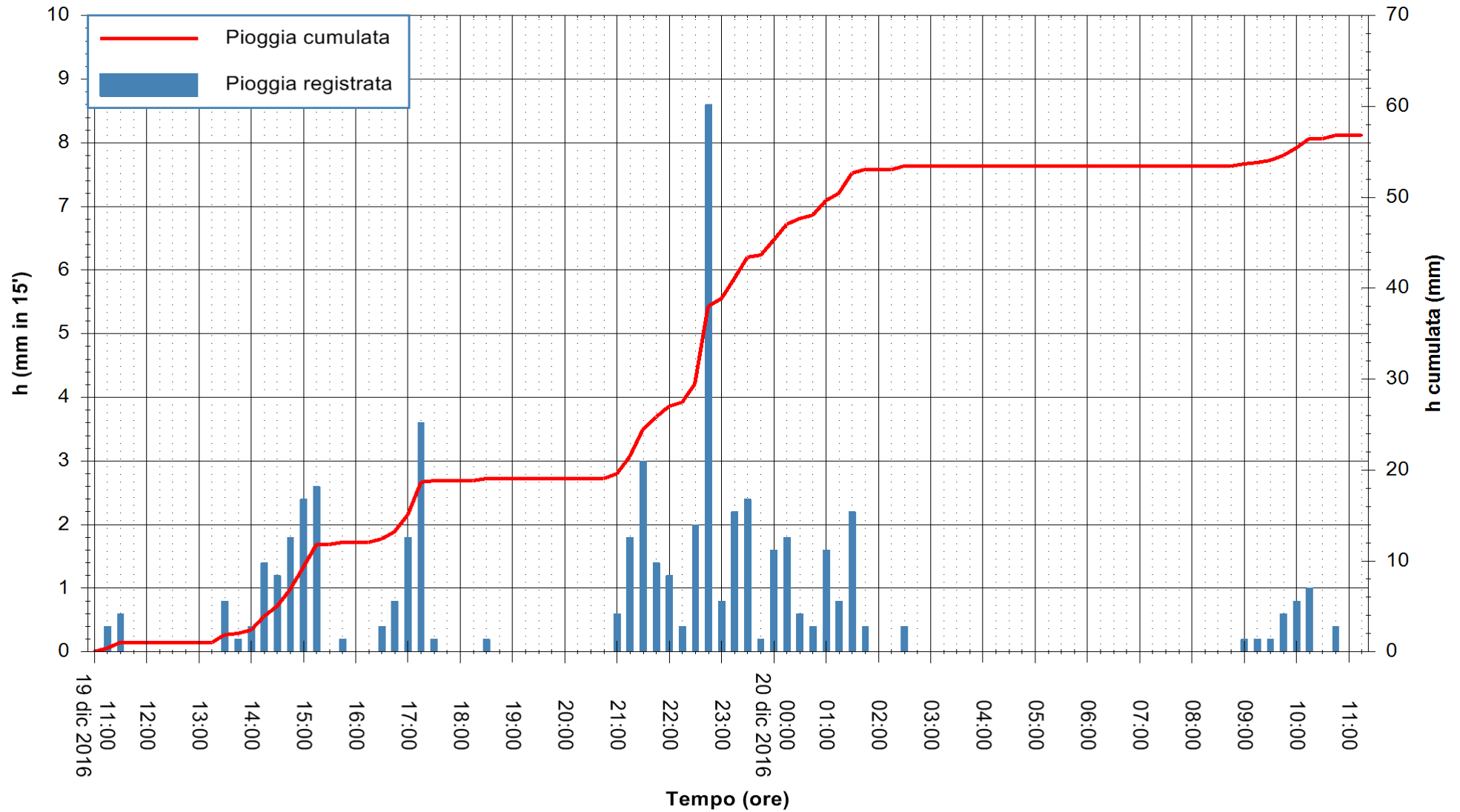


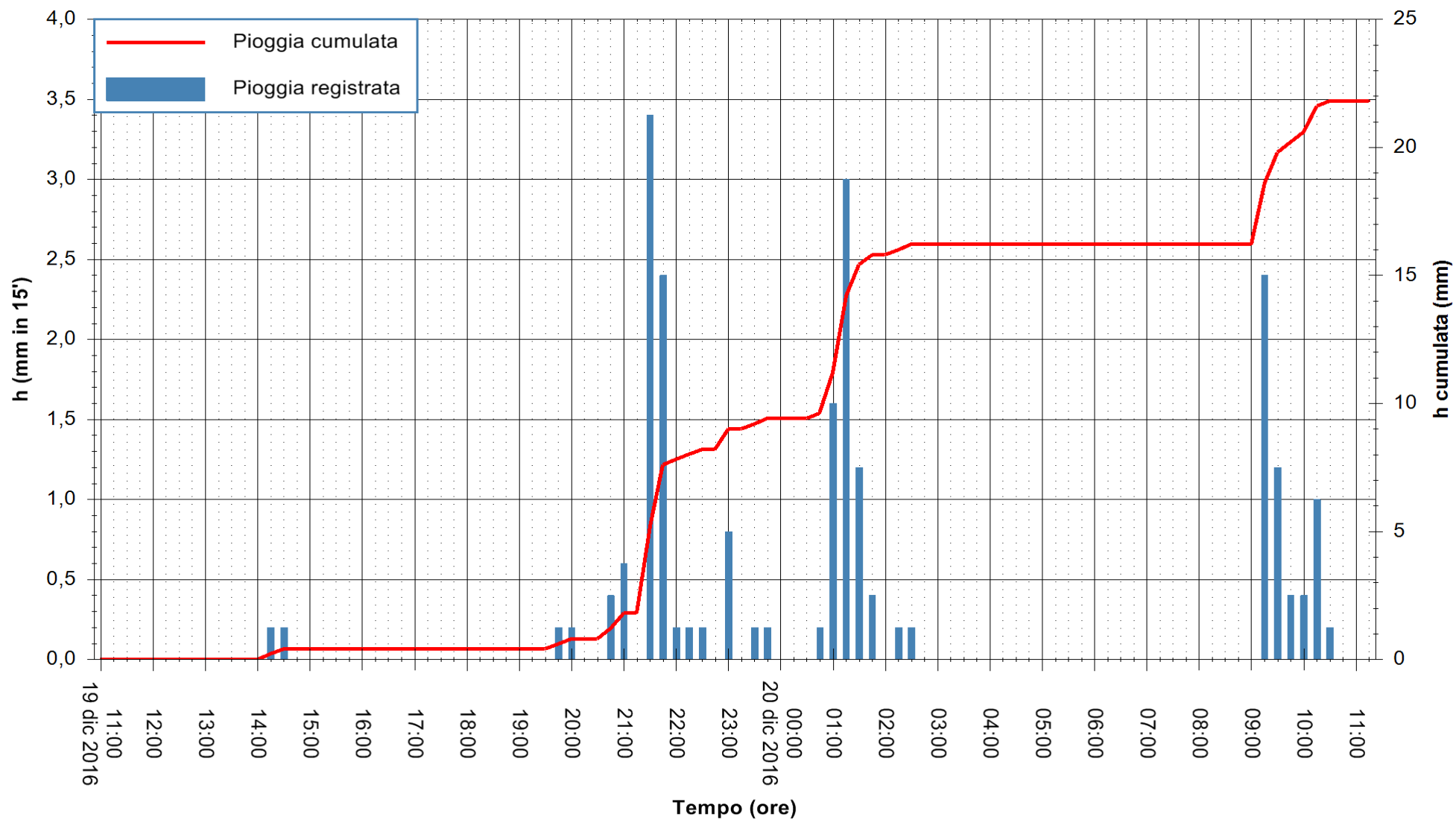




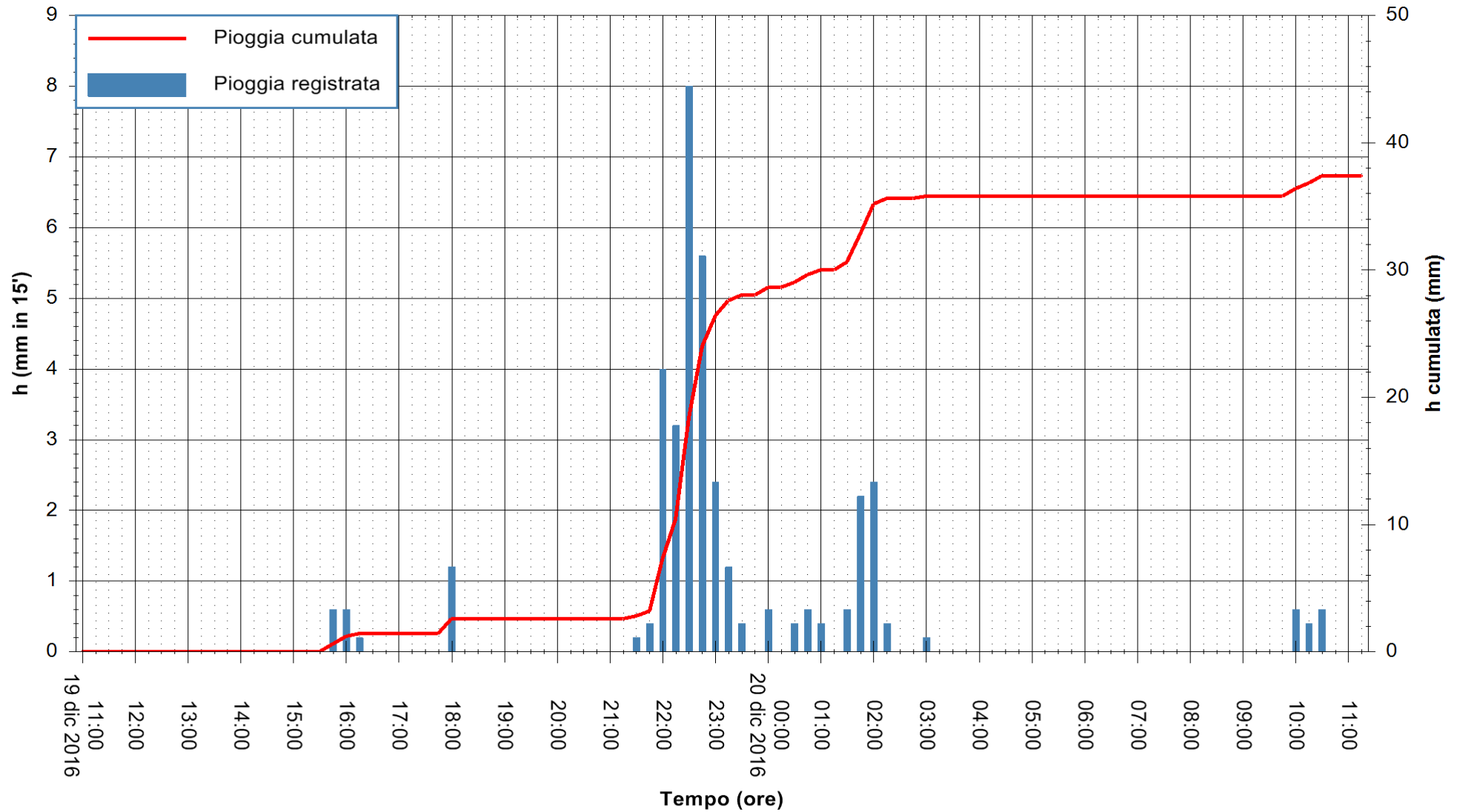


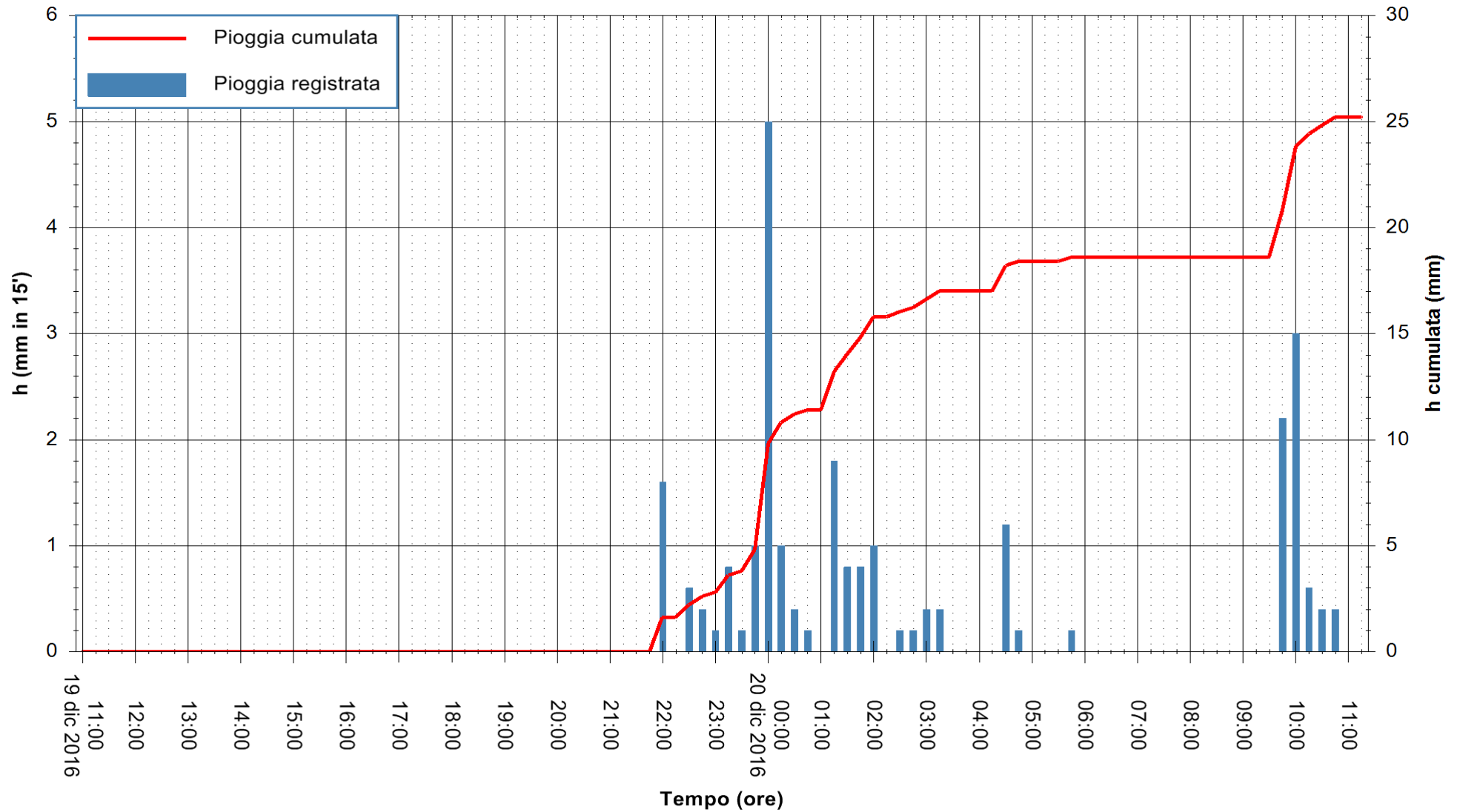


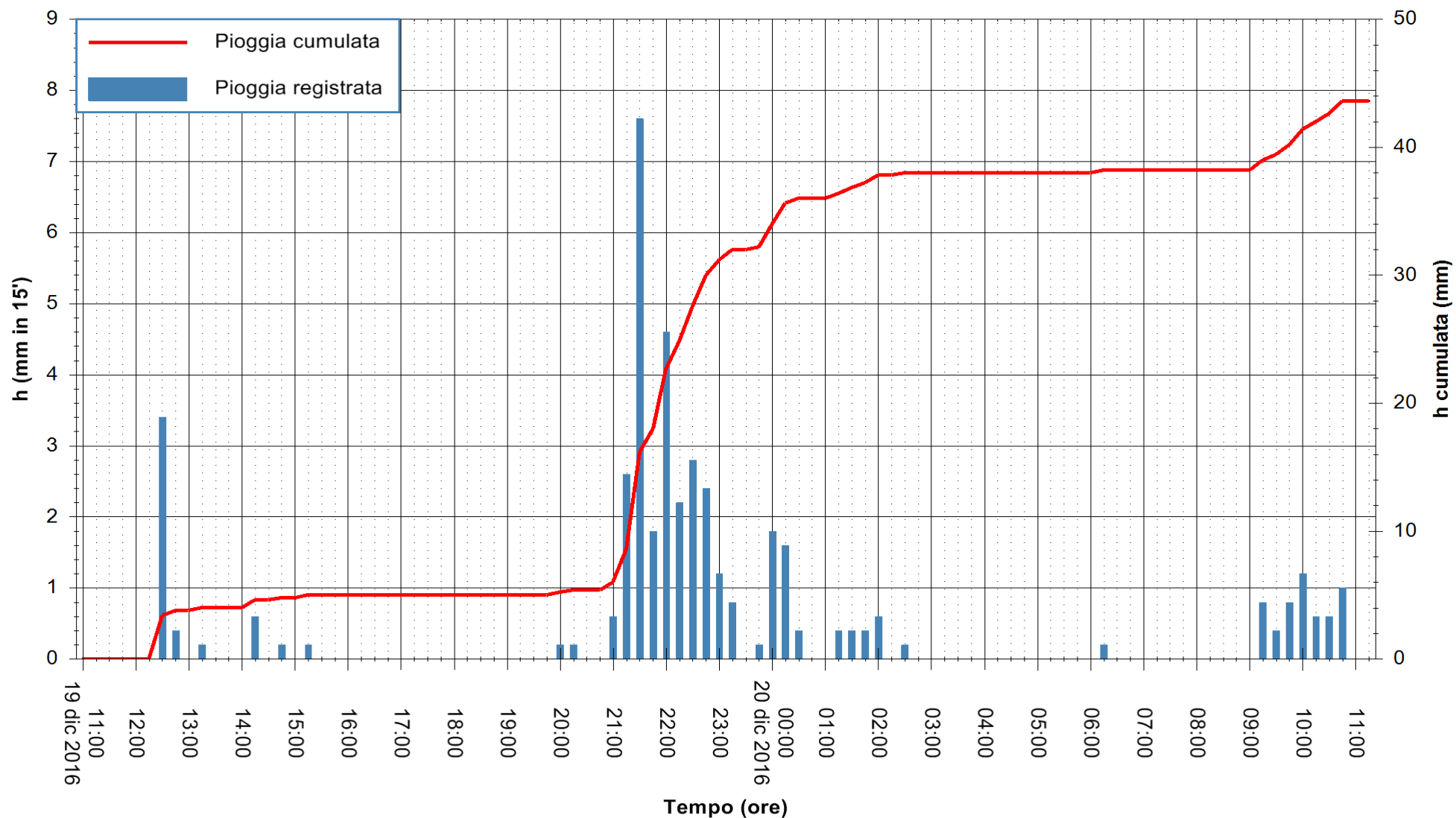


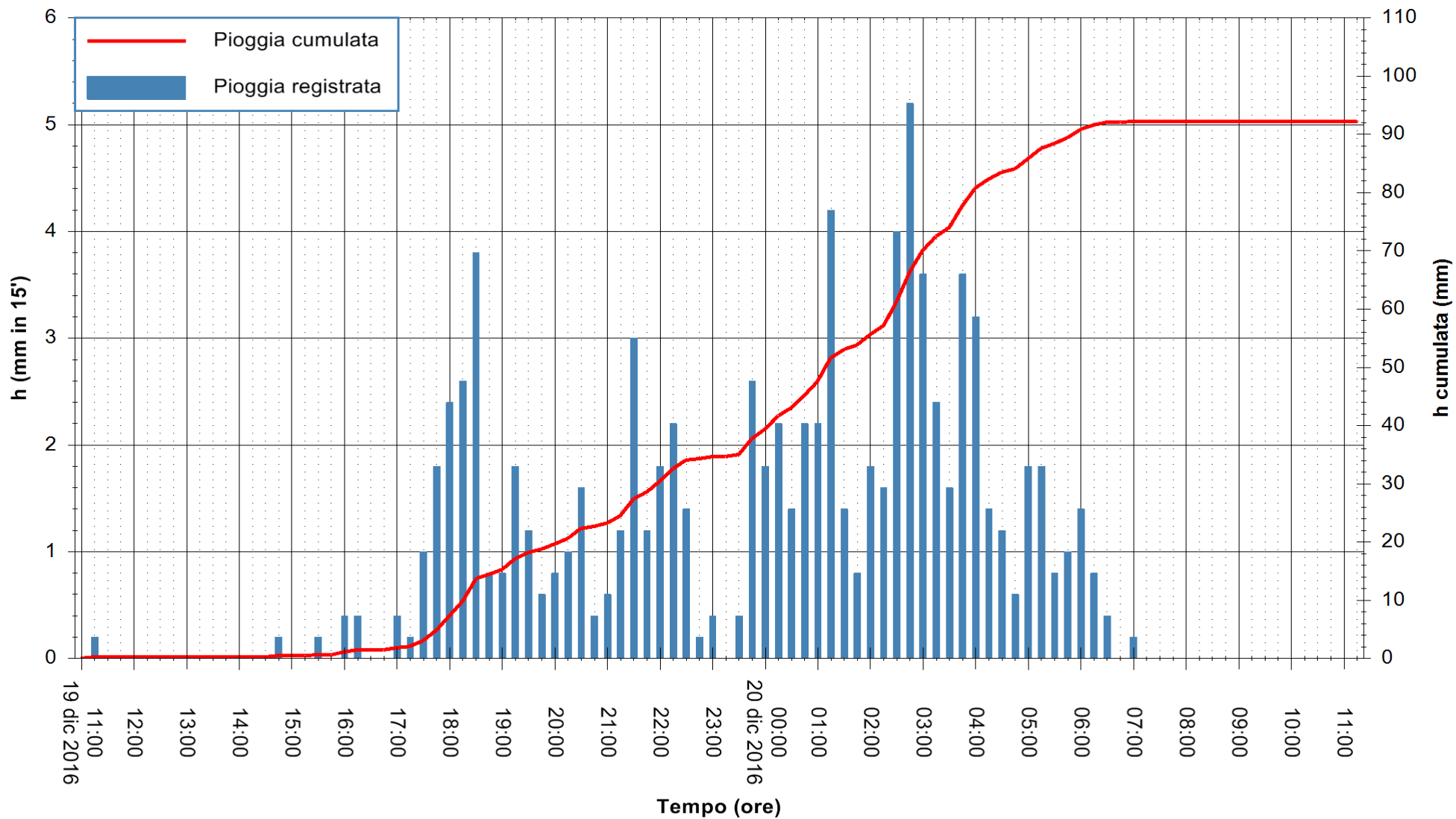










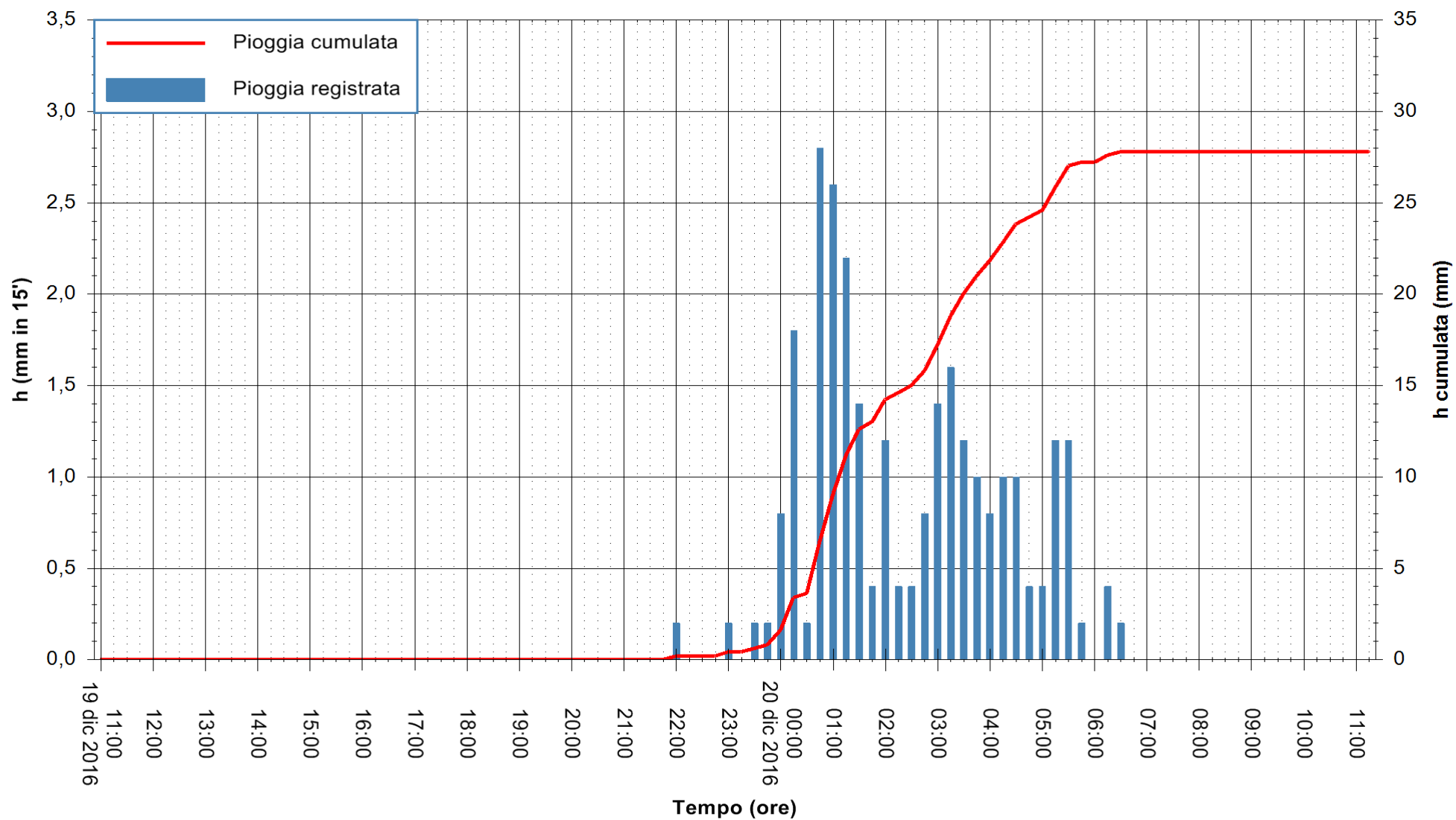


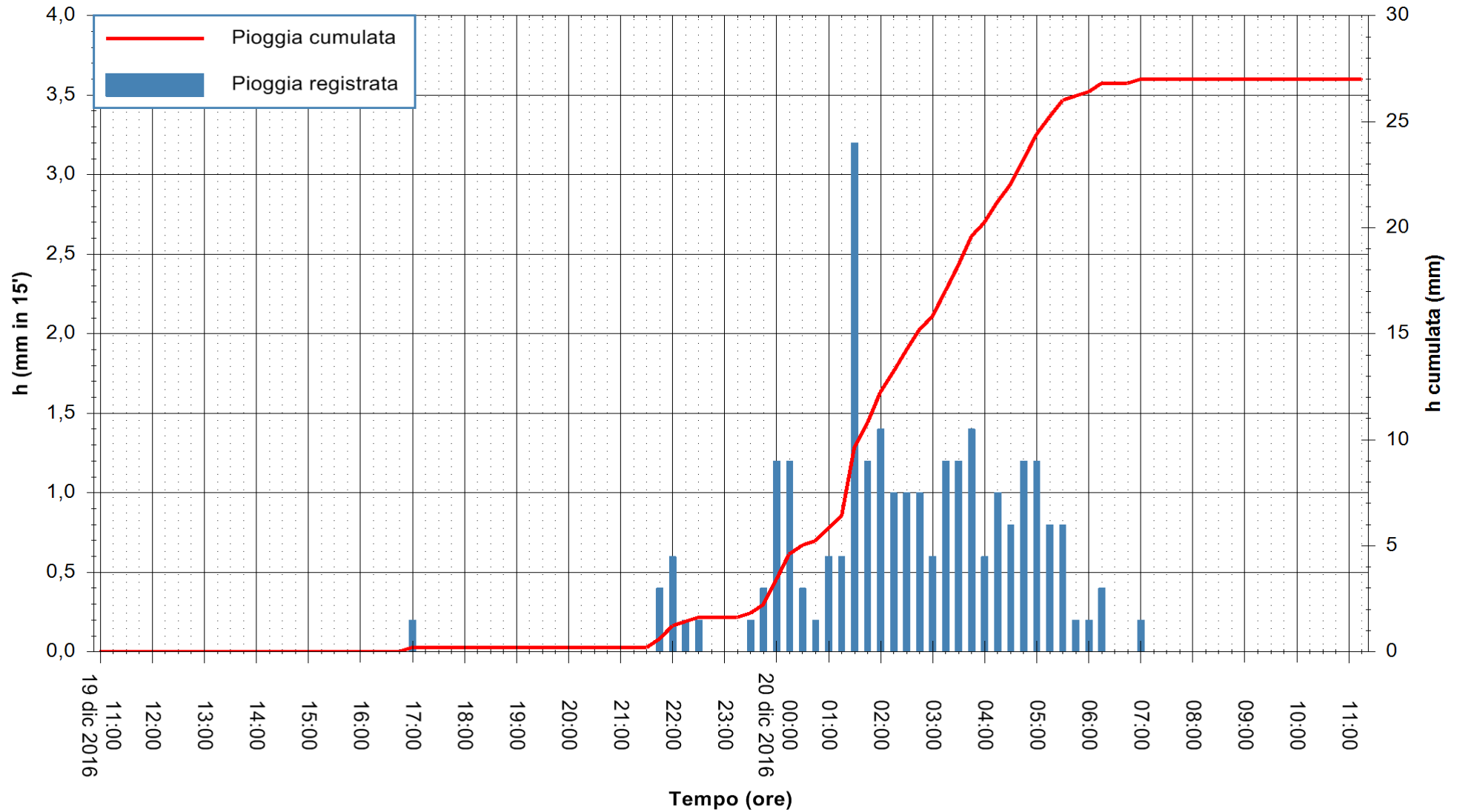
Stazione pluviometrica Mannu di Porto Torres  
Area PONTE MOLINU  
Pioggia registrata nelle ultime 24 ore  
Consultazione alle ore 12:11 del 20/12/2016



ARPAS  
F.to il Dirigente Responsabile  
Dott. Giuseppe Bianco

REGIONE AUTONOMA DE SARDIGNA  
REGIONE AUTONOMA DELLA SARDEGNA



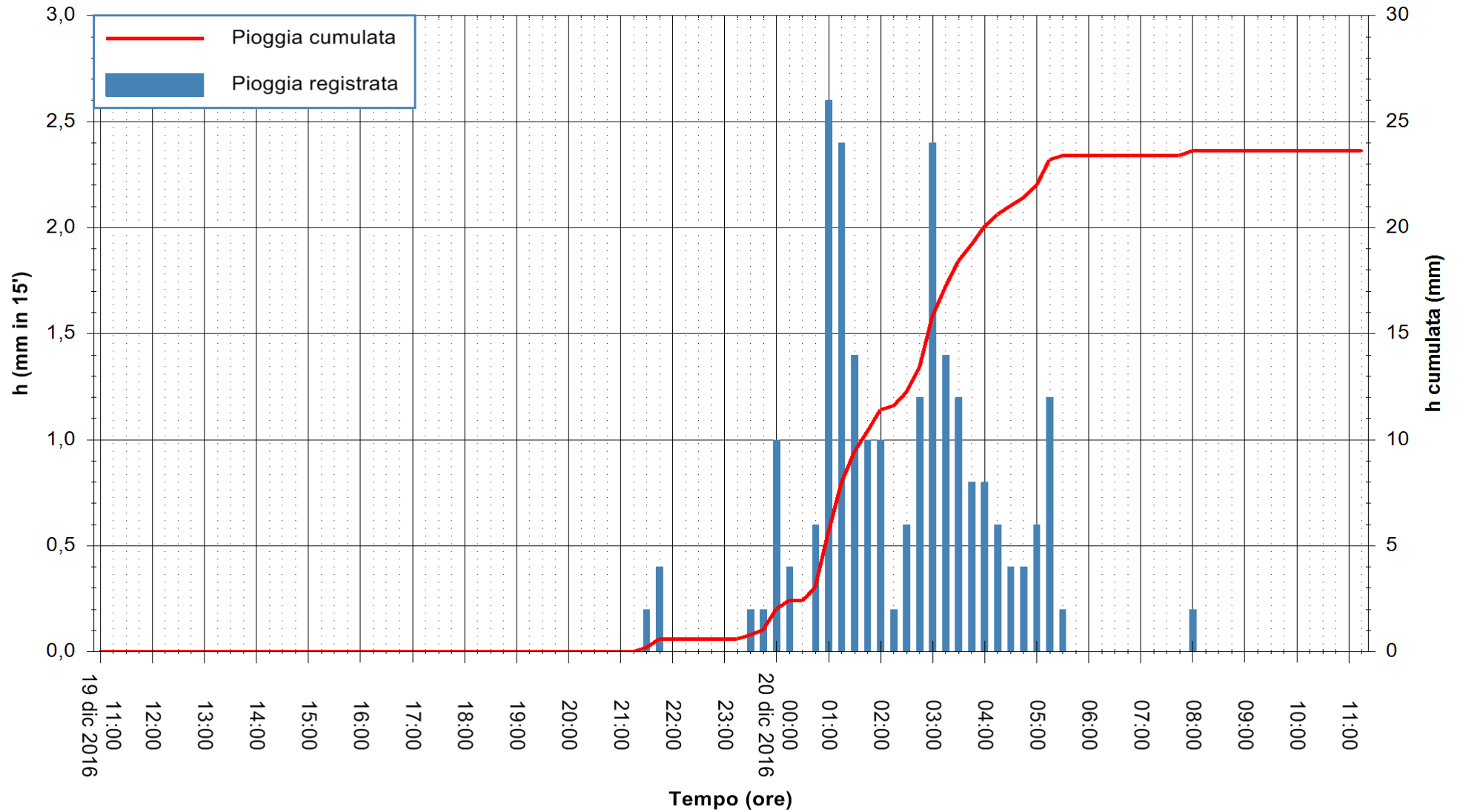


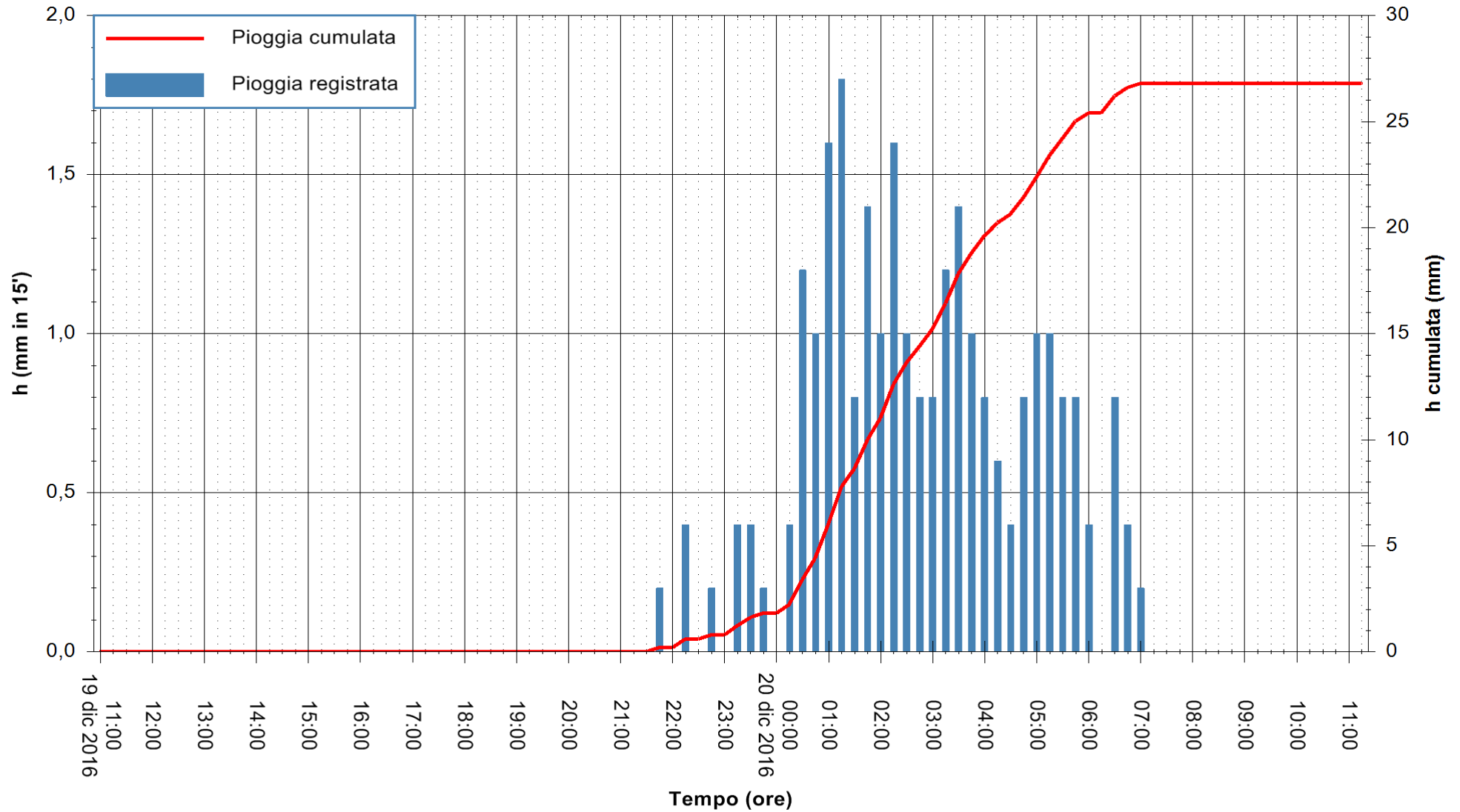
Stazione pluviometrica Pianu  
 Area PIANU 15  
 Pioggia registrata nelle ultime 24 ore  
 Consultazione alle ore 12:11 del 20/12/2016



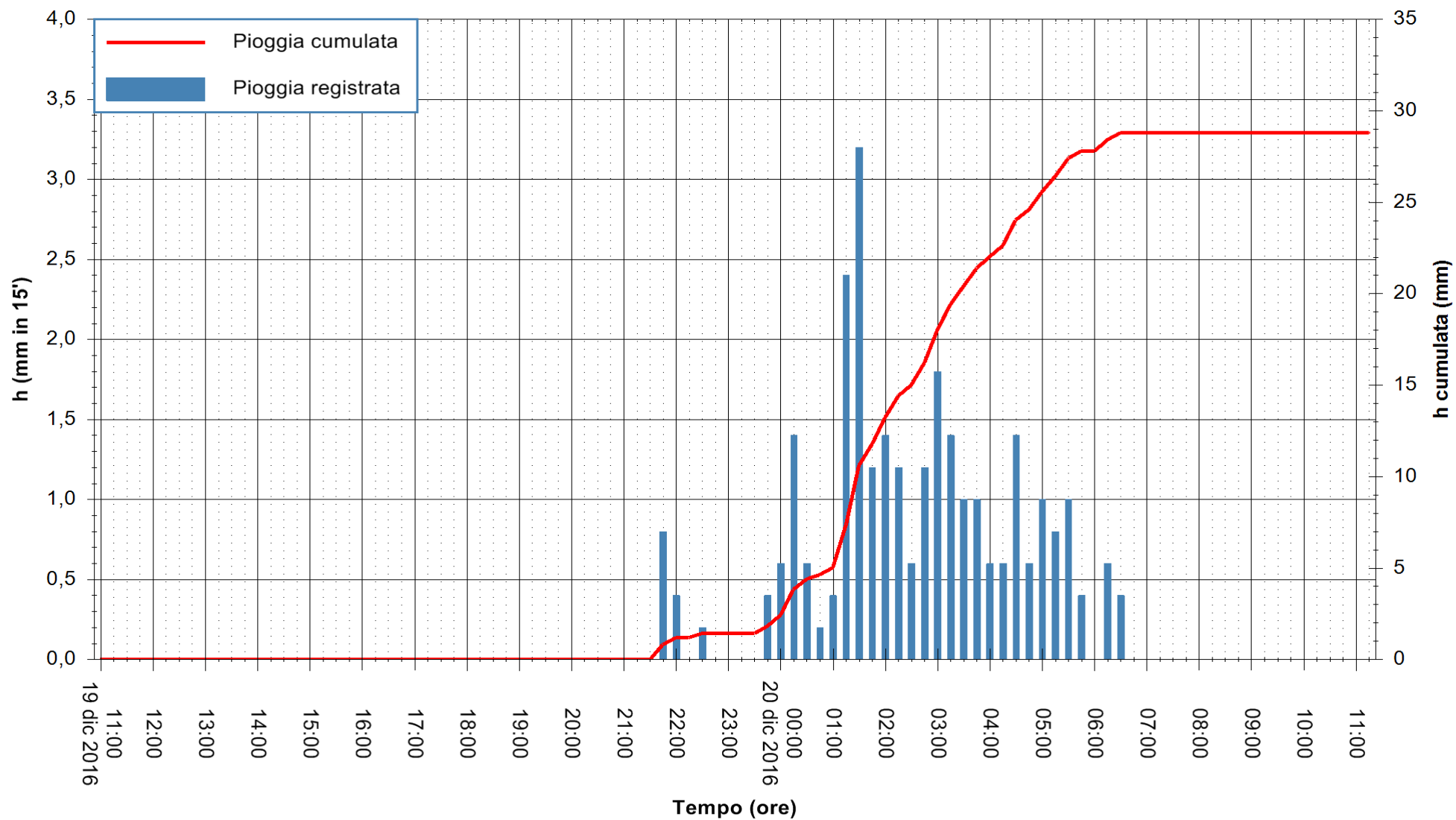
ARPAS  
 F.to il Dirigente Responsabile  
 Dott. Giuseppe Bianco

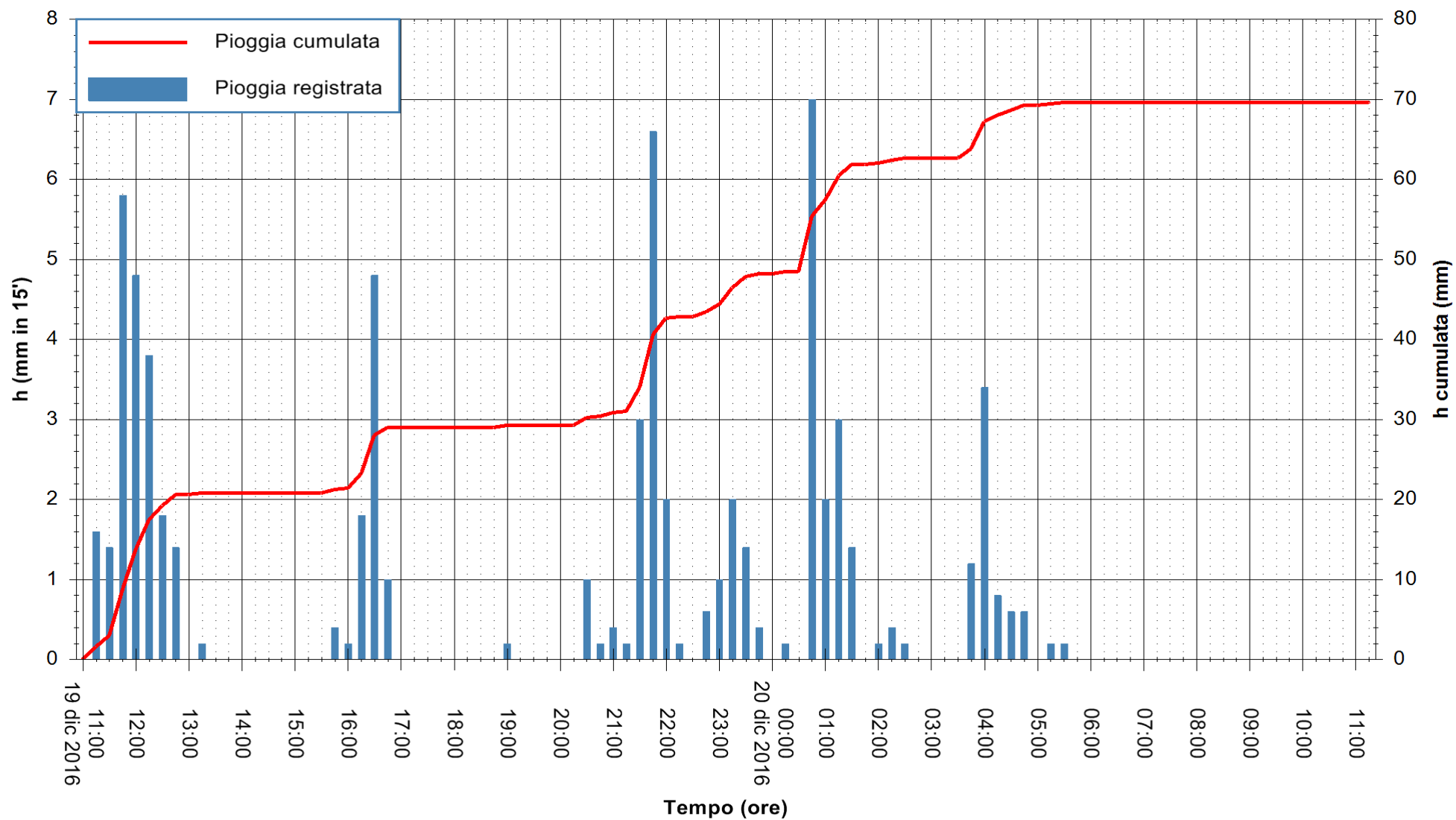
REGIONE AUTÒNOMA DE SARDIGNA  
 REGIONE AUTONOMA DELLA SARDEGNA

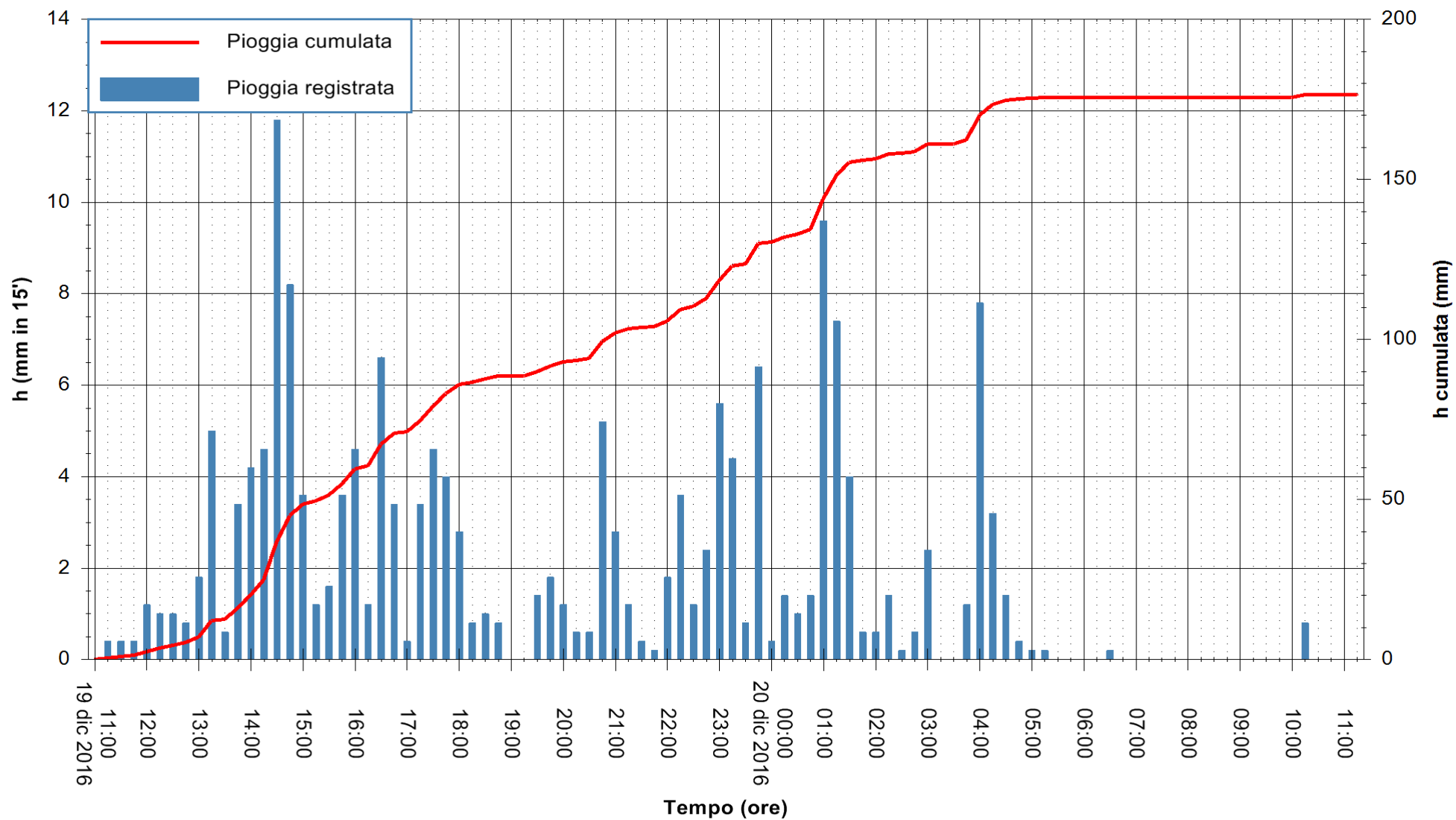


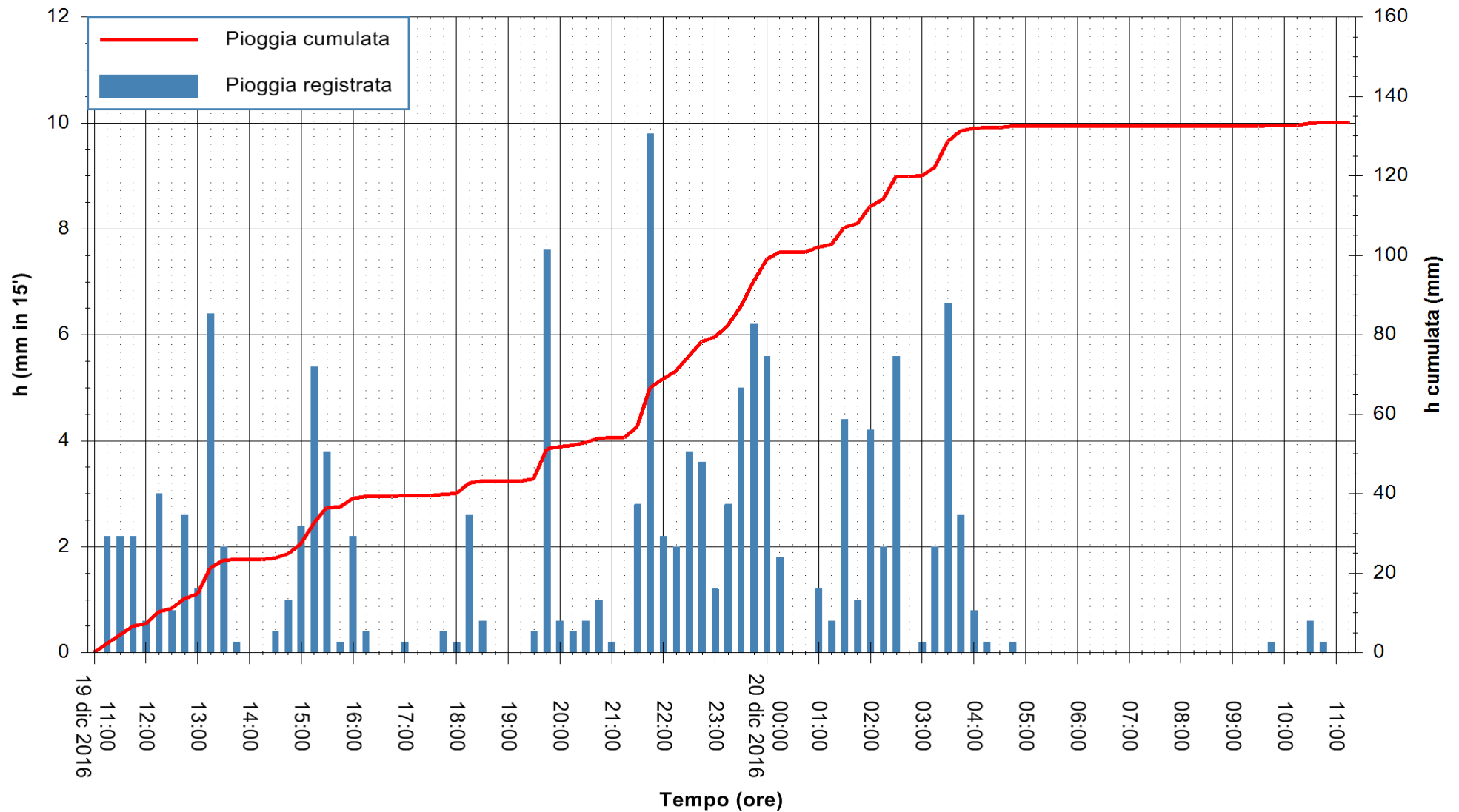


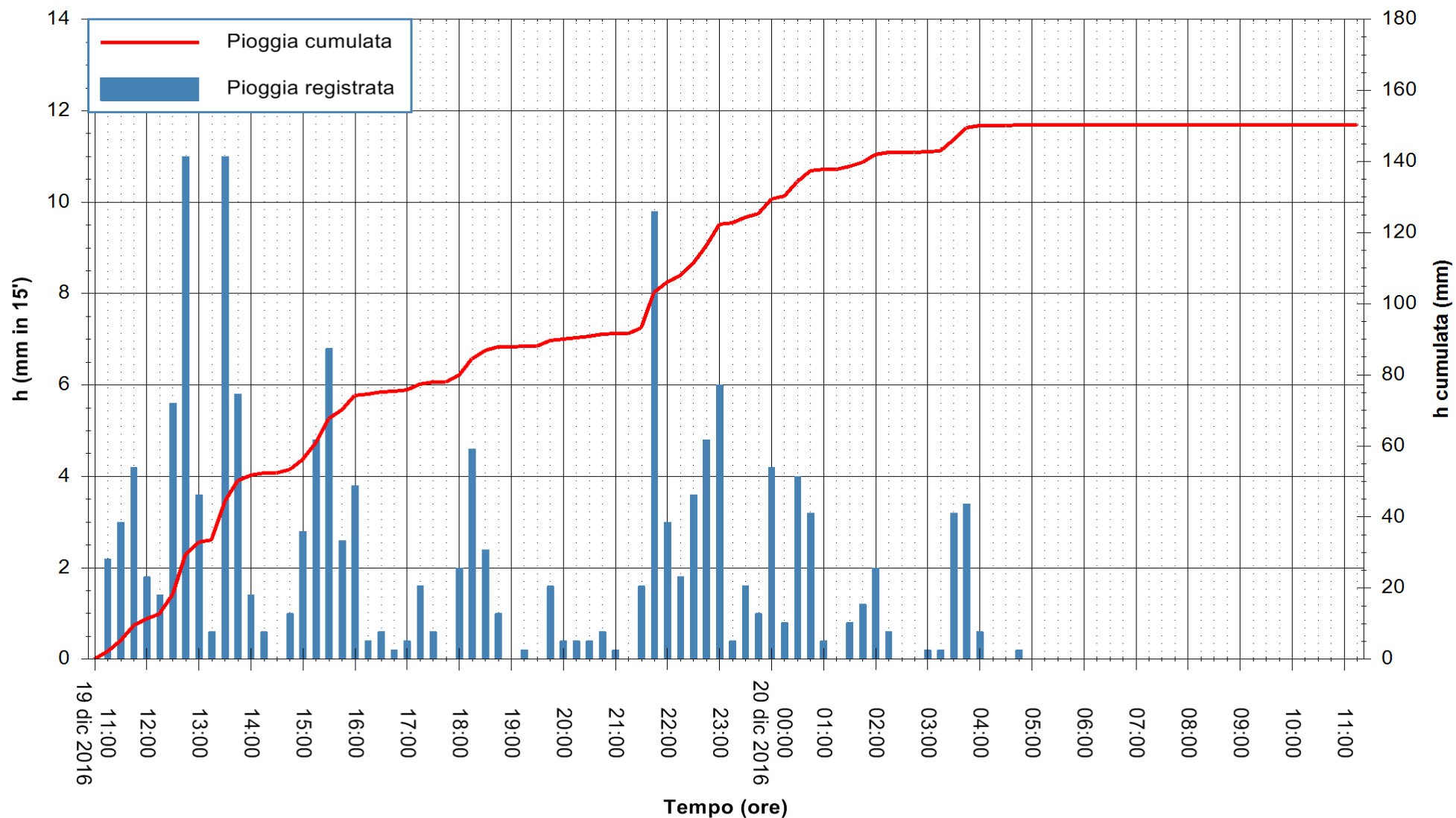


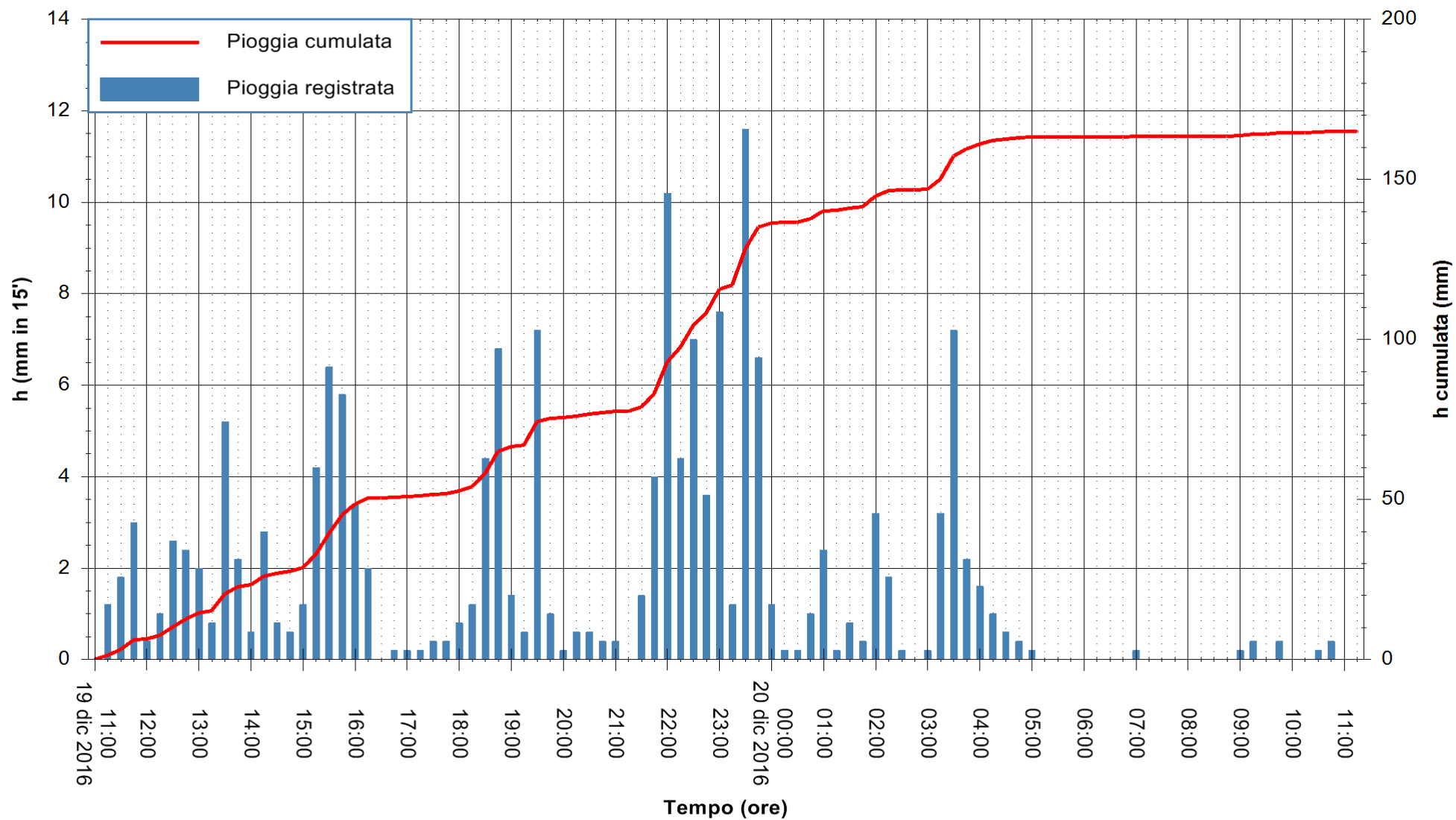


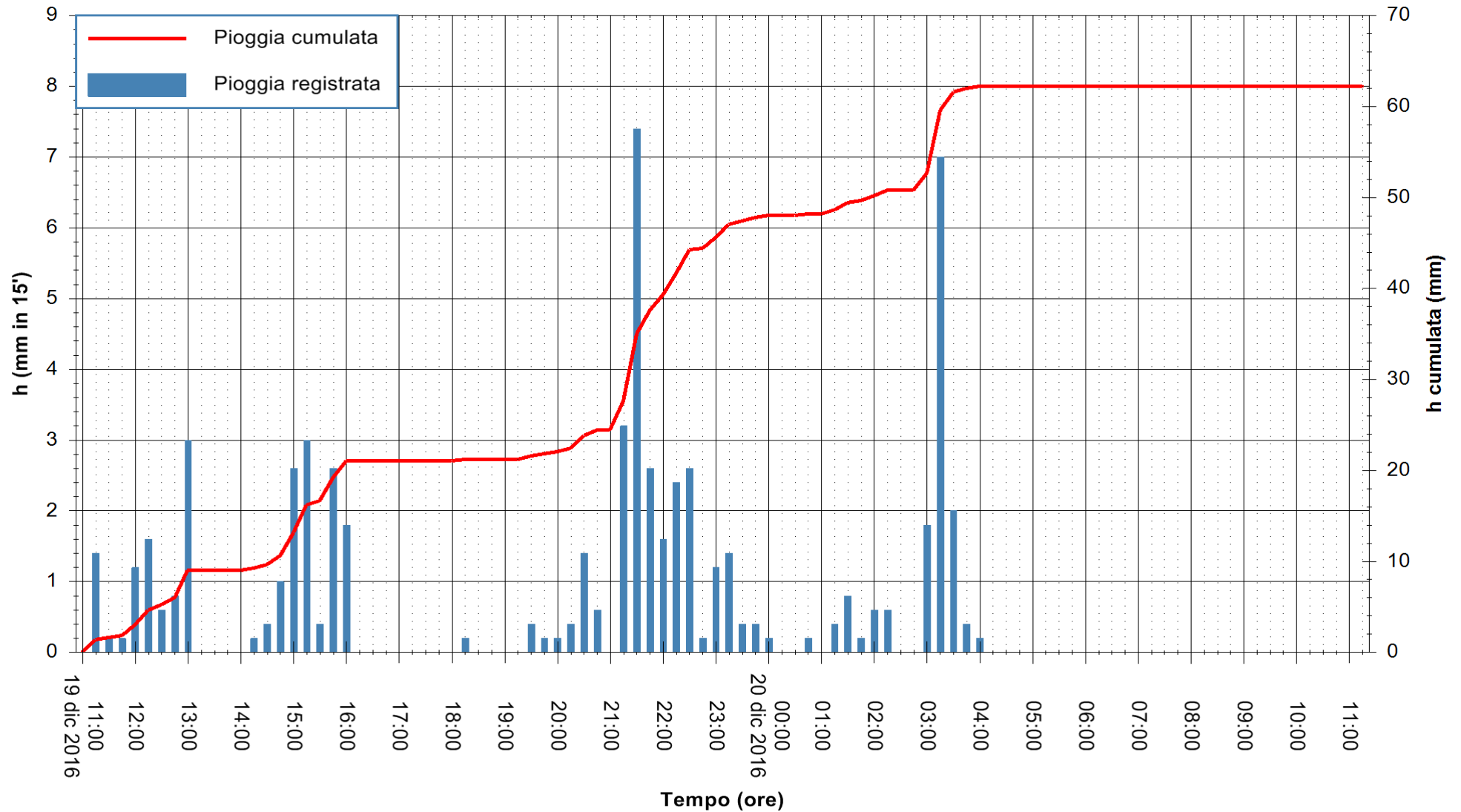


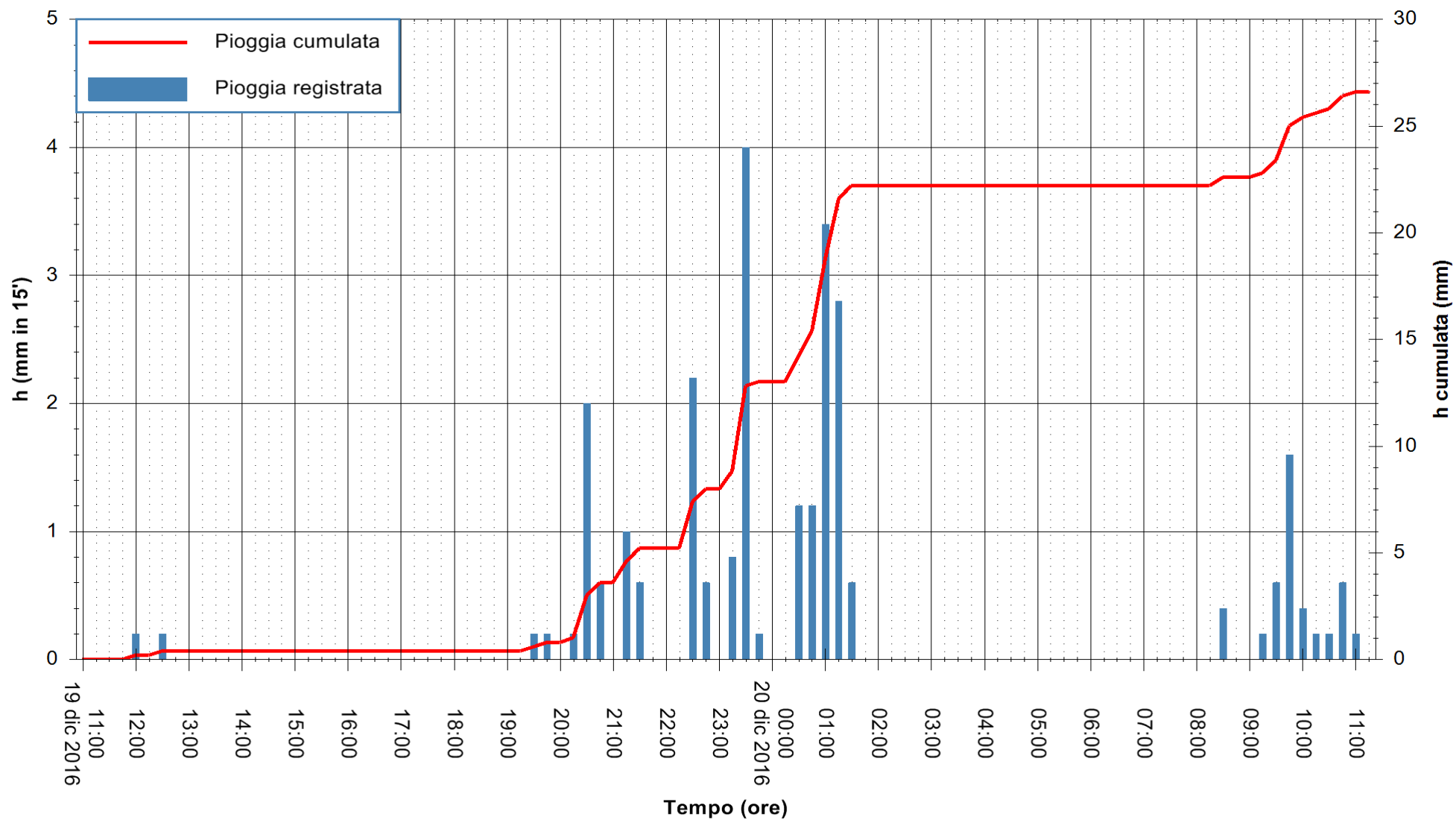




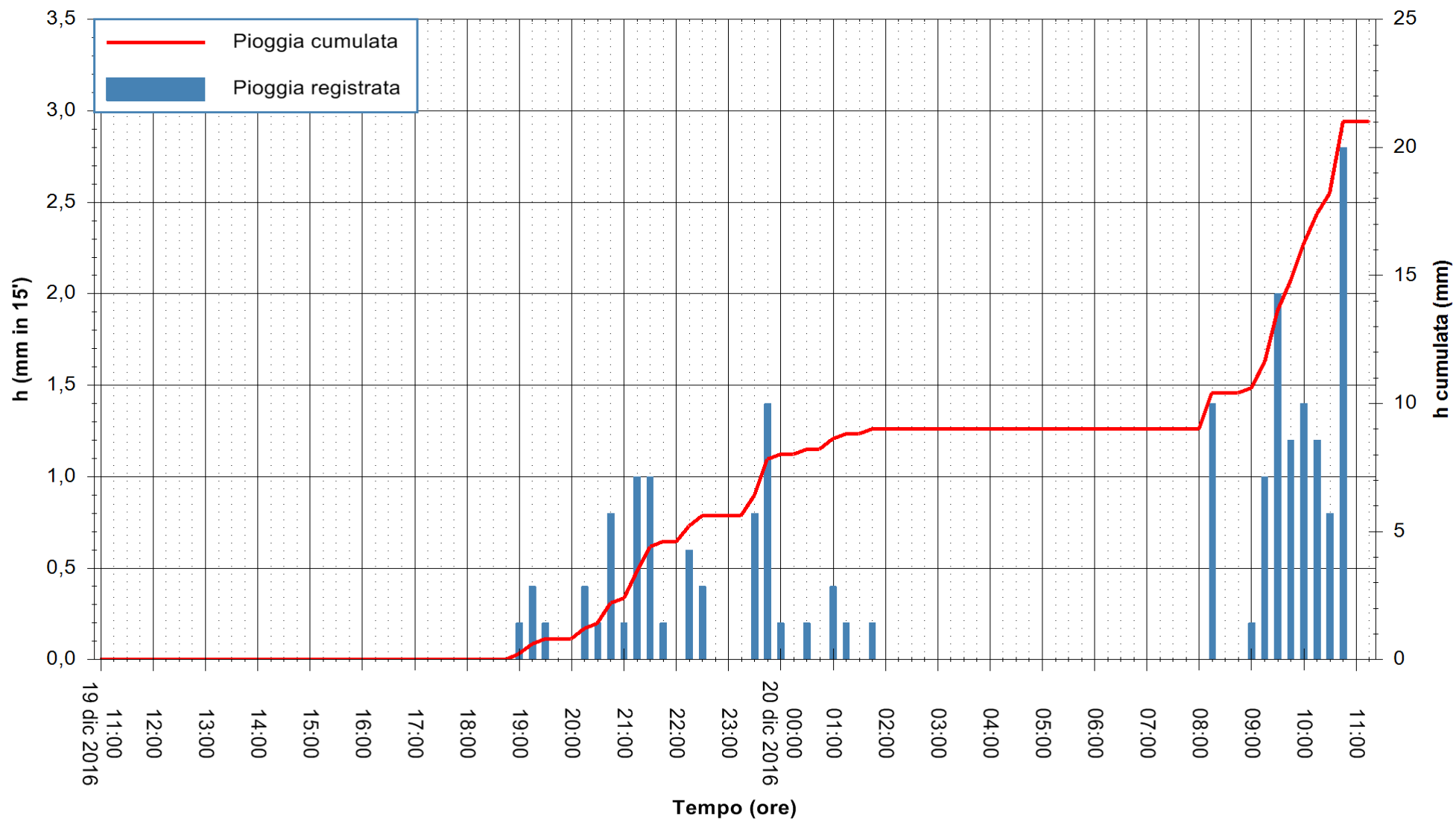


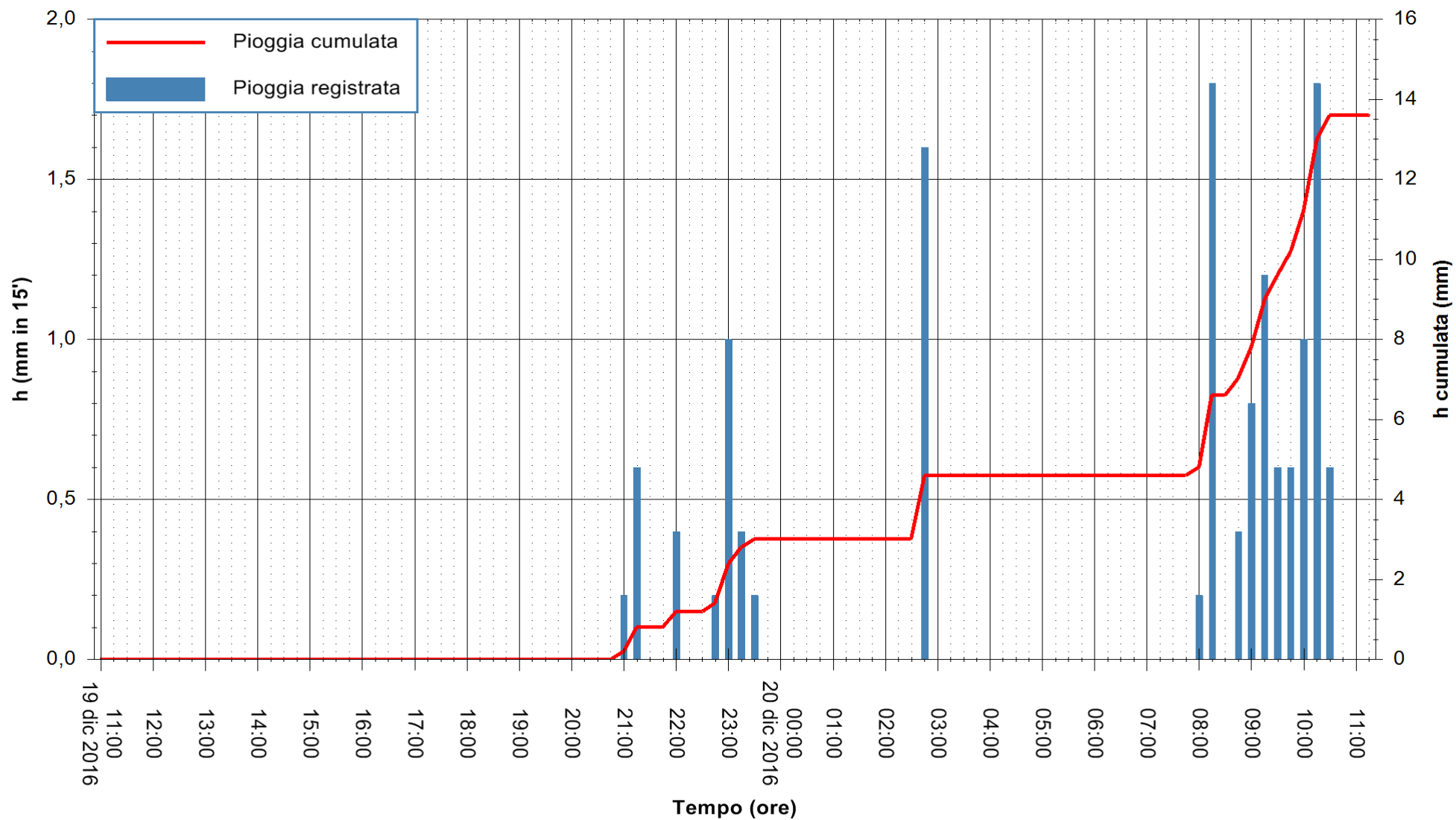


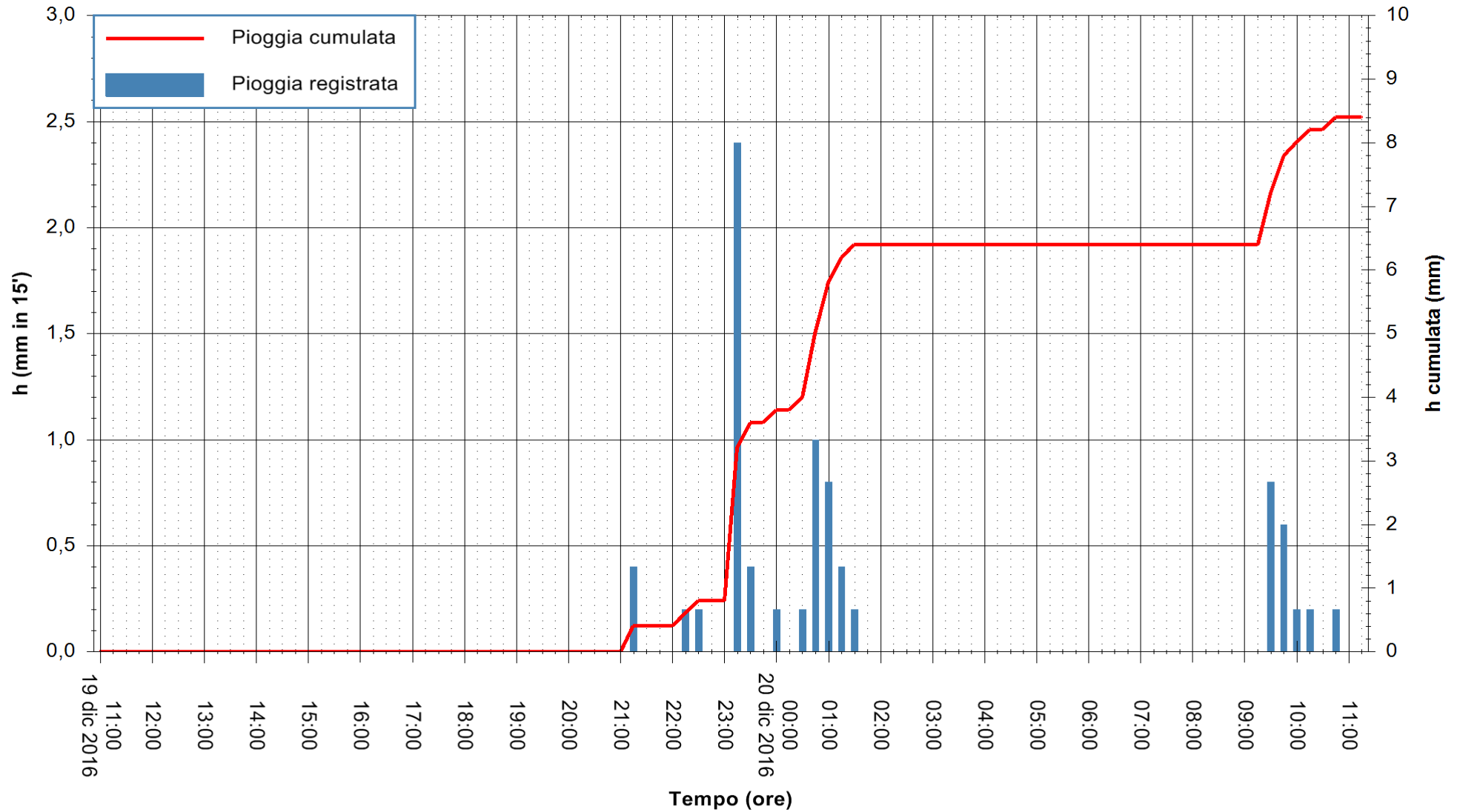












Stazione pluviometrica Santa Lucia di Capoterra  
 Area S.LUCIA  
 Pioggia registrata nelle ultime 24 ore  
 Consultazione alle ore 12:11 del 20/12/2016



ARPAS  
 F.to il Dirigente Responsabile  
 Dott. Giuseppe Bianco

REGIONE AUTONOMA DE SARDIGNA  
 REGIONE AUTONOMA DELLA SARDEGNA

