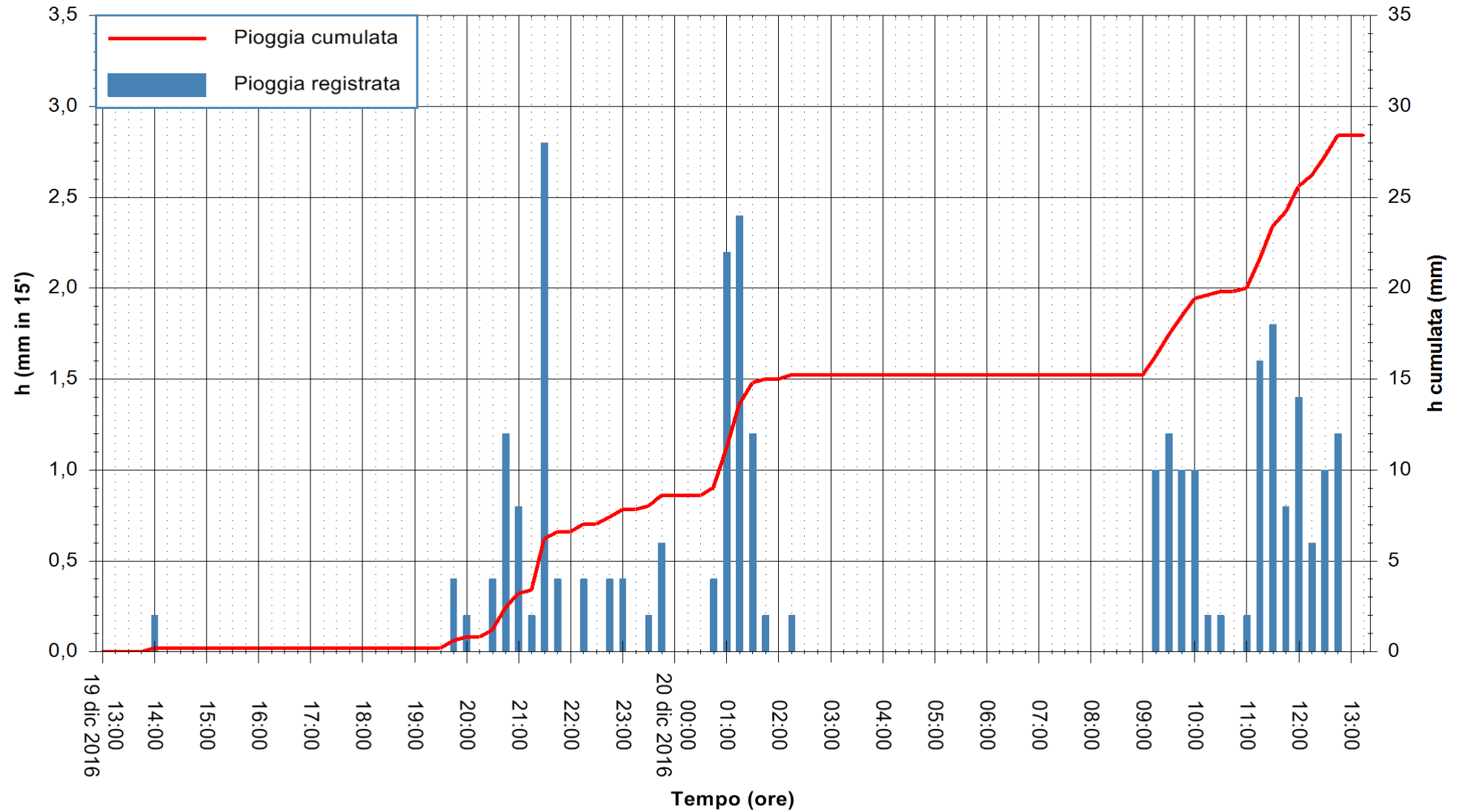


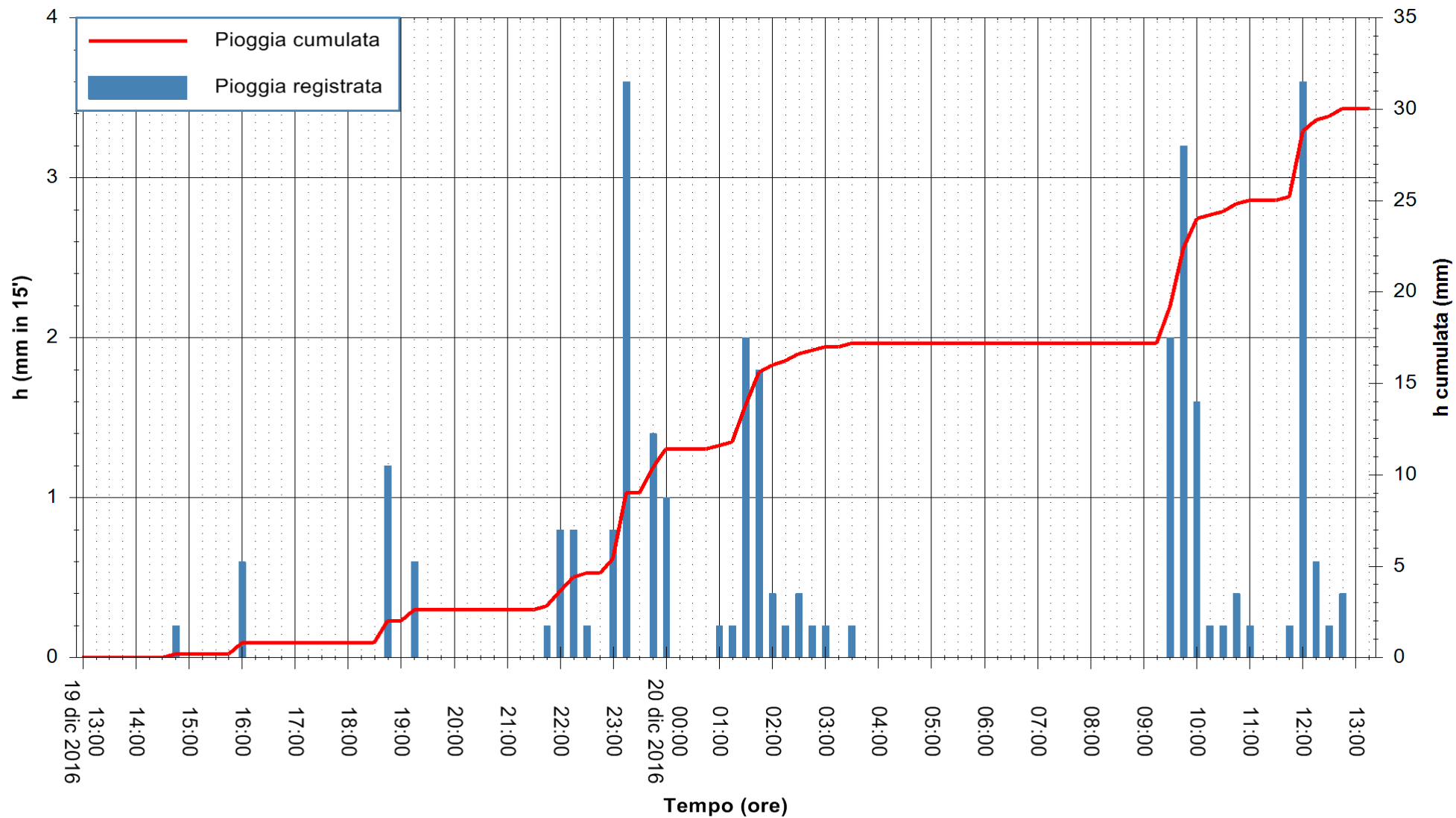
Stazione pluviometrica Fluminimannu a Decimomannu
 Area DECIMOMANNU
 Pioggia registrata nelle ultime 24 ore
 Consultazione alle ore 14:11 del 20/12/2016

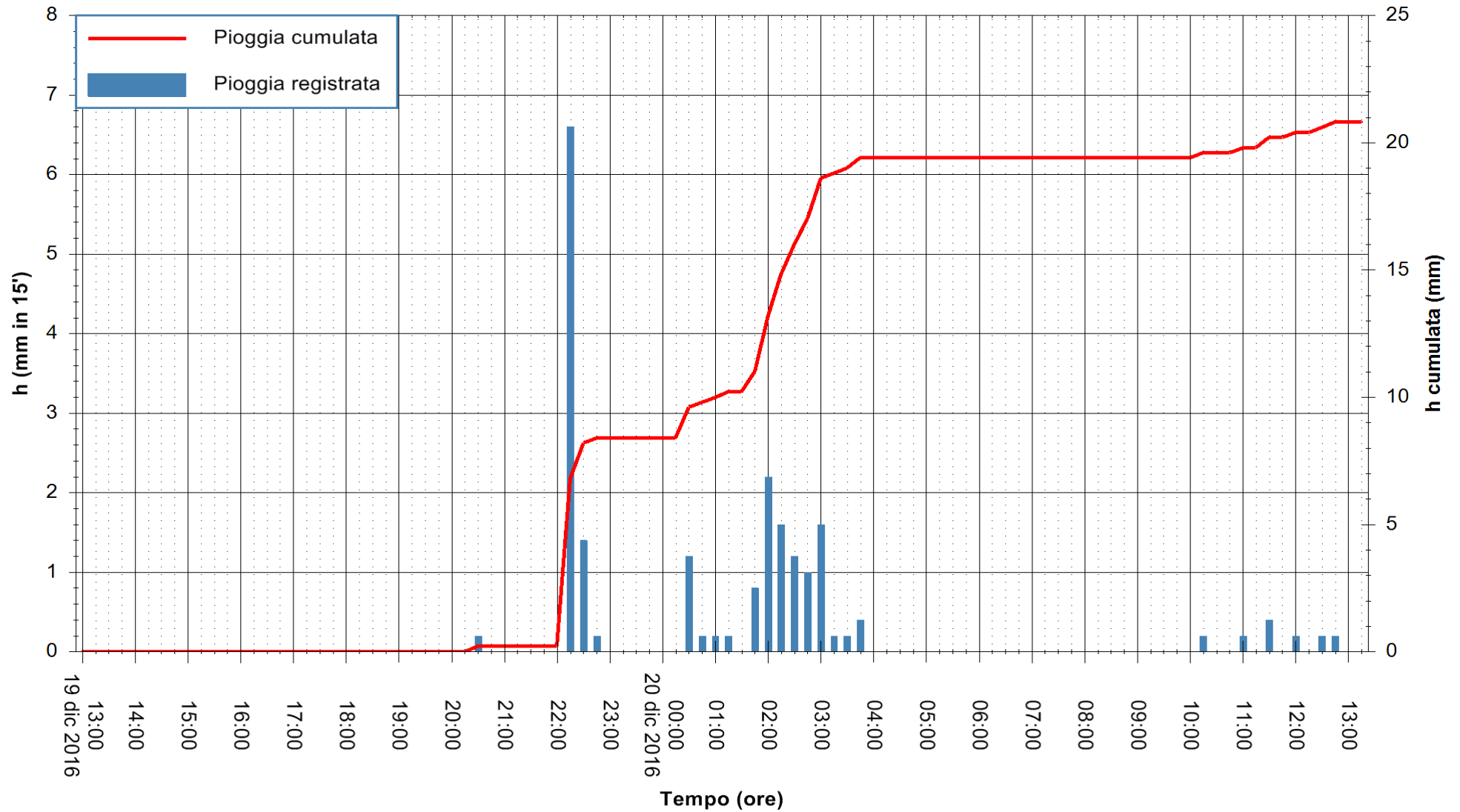


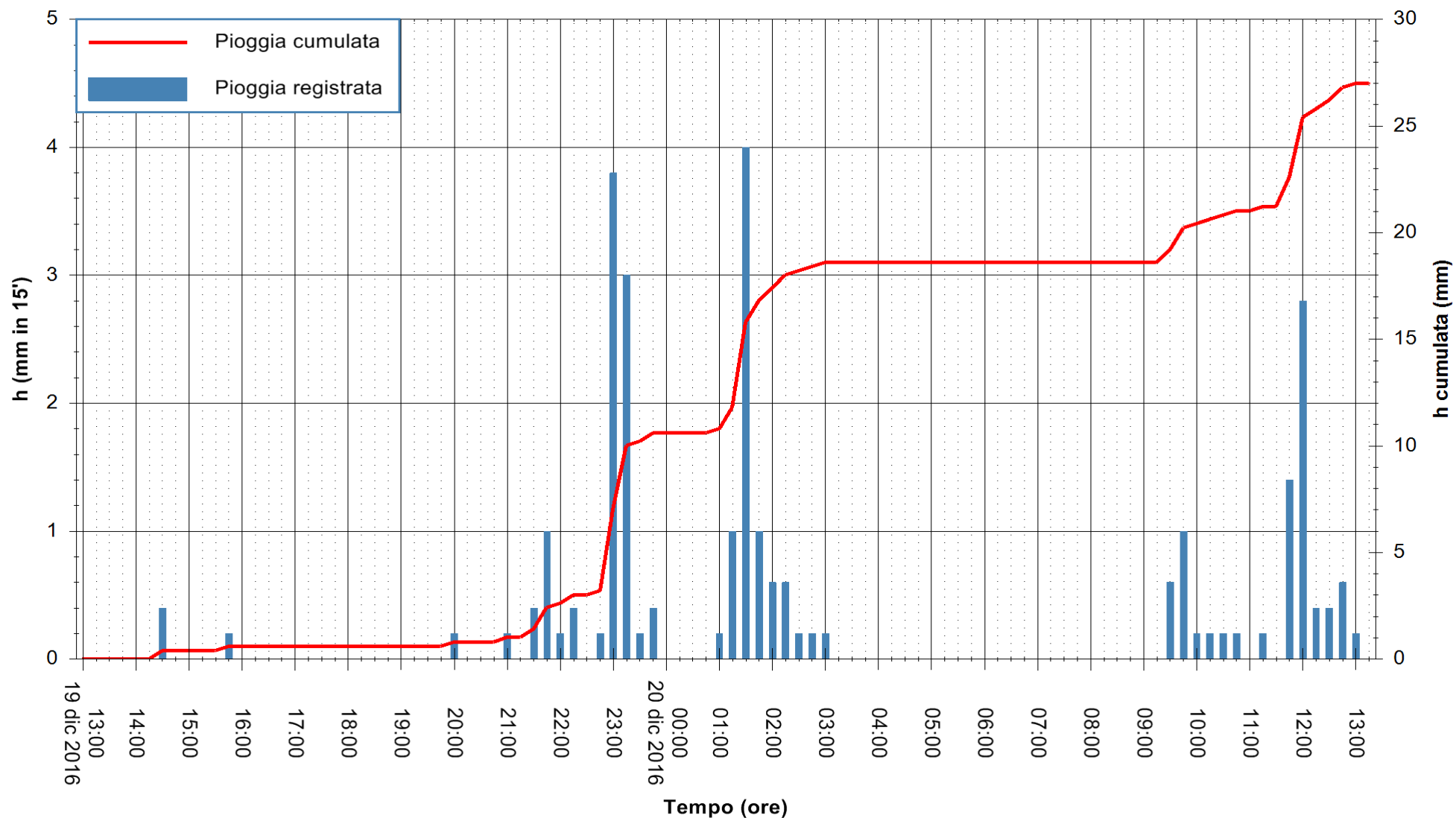
ARPAS
 F.to il Dirigente Responsabile
 Dott. Giuseppe Bianco

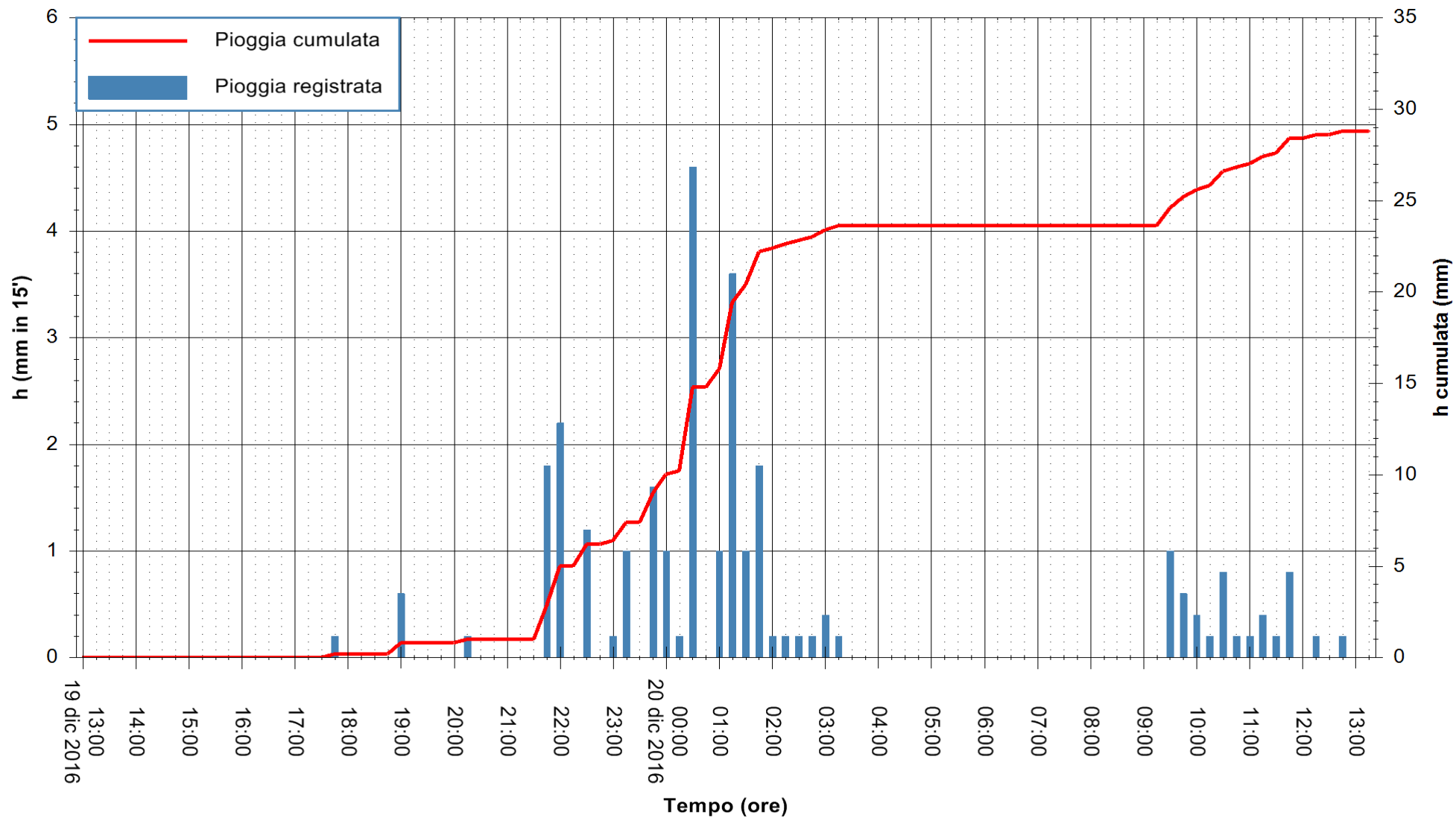
REGIONE AUTONOMA DE SARDIGNA
 REGIONE AUTONOMA DELLA SARDEGNA

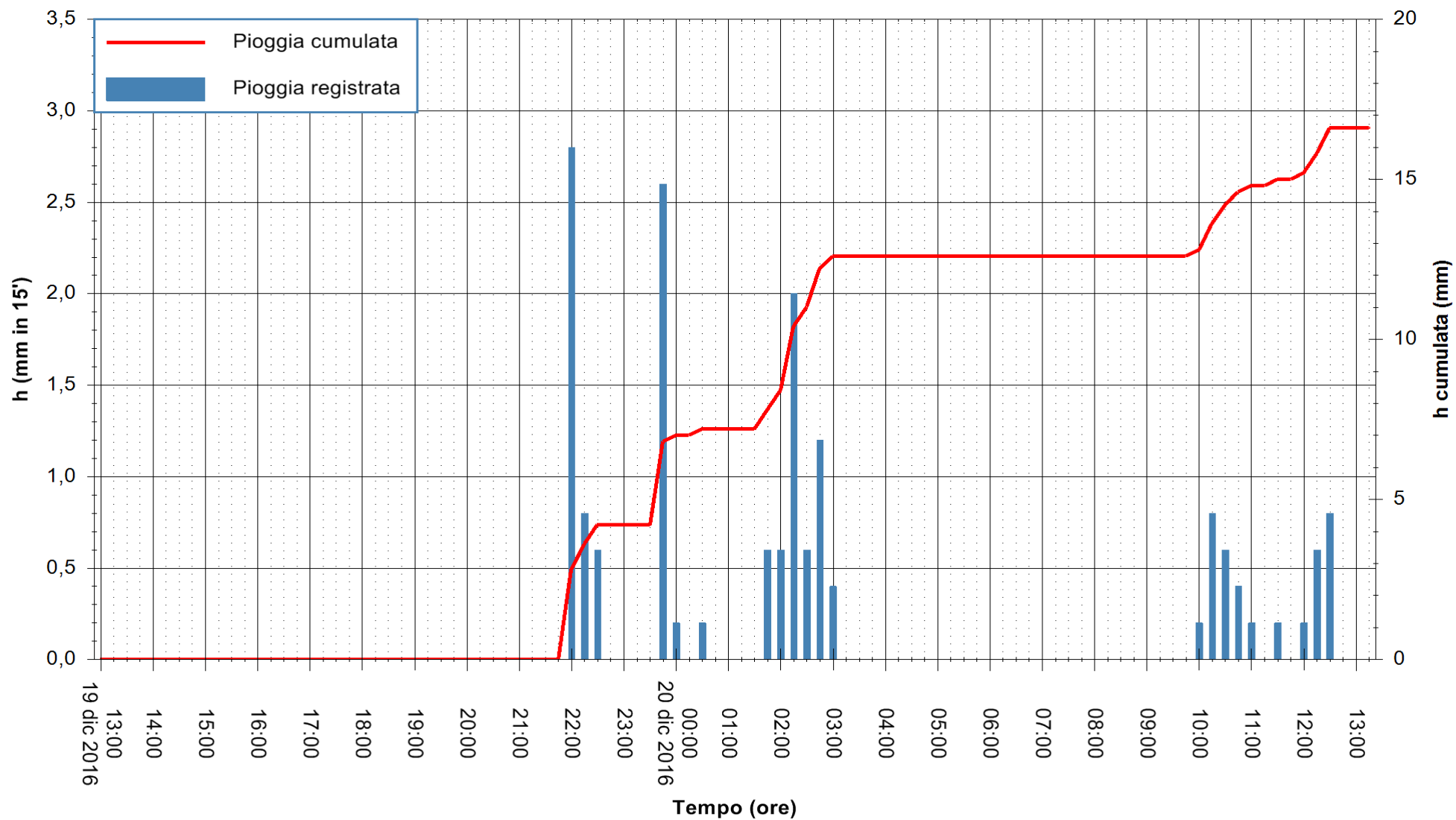


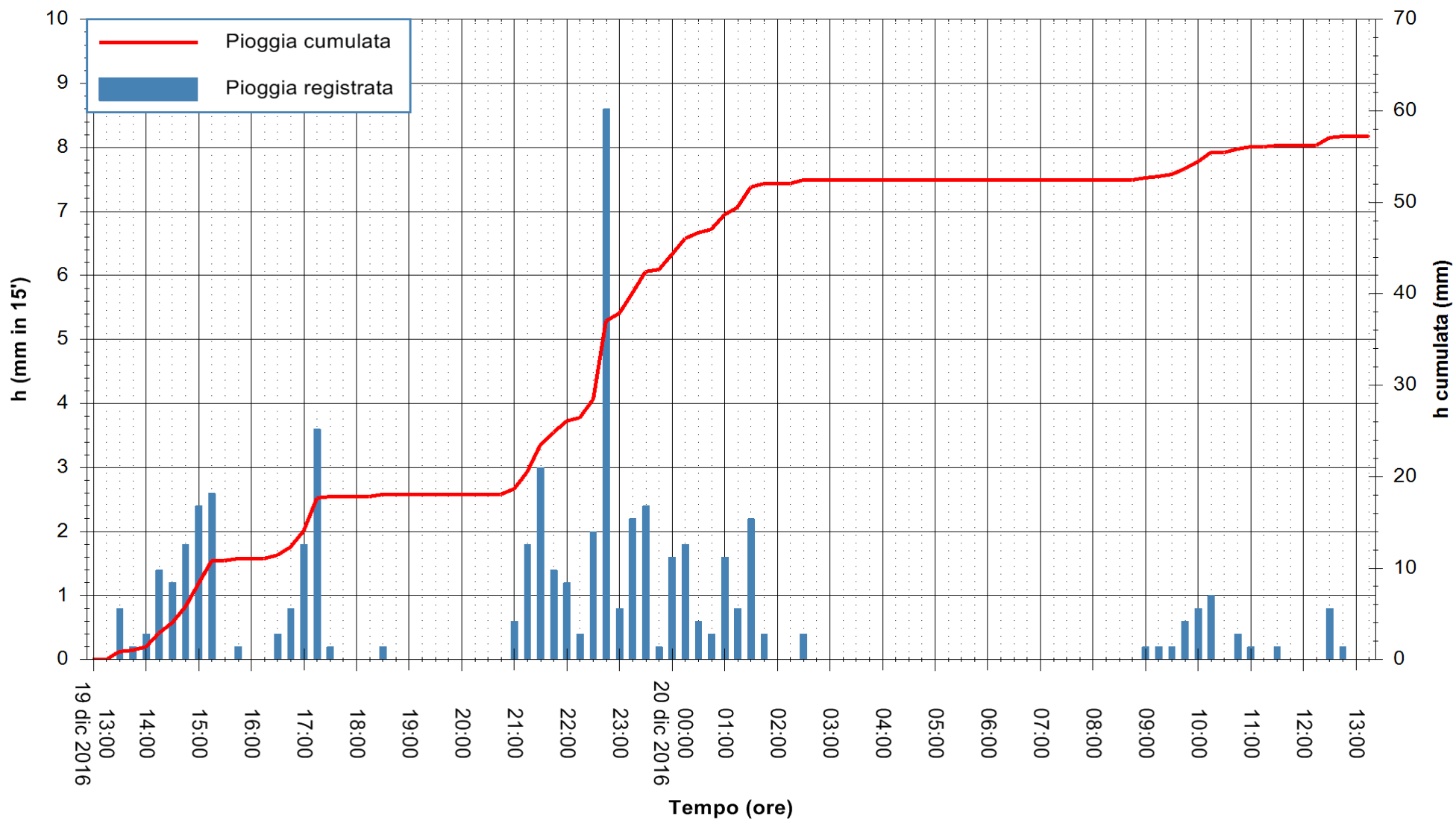


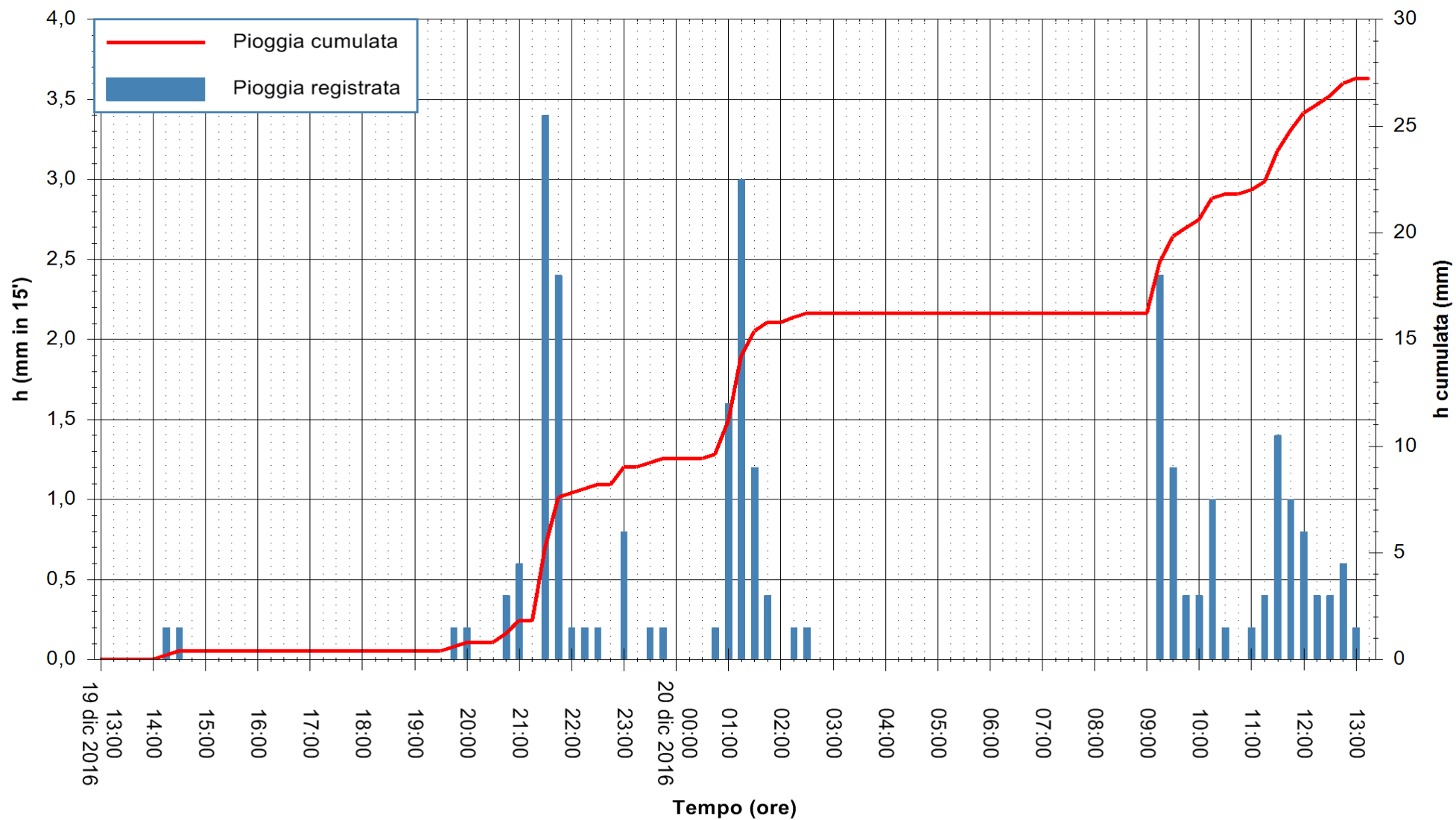


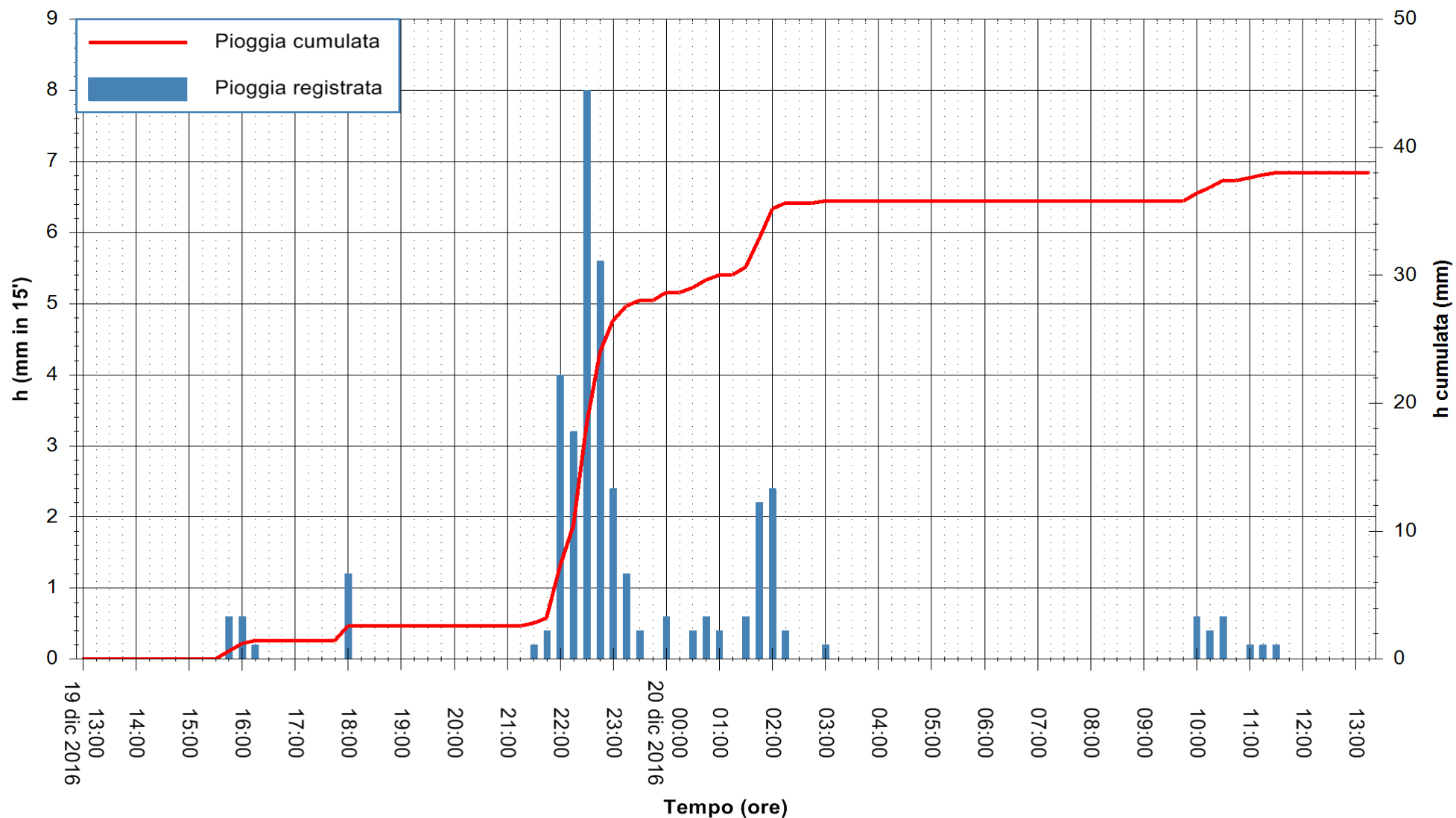


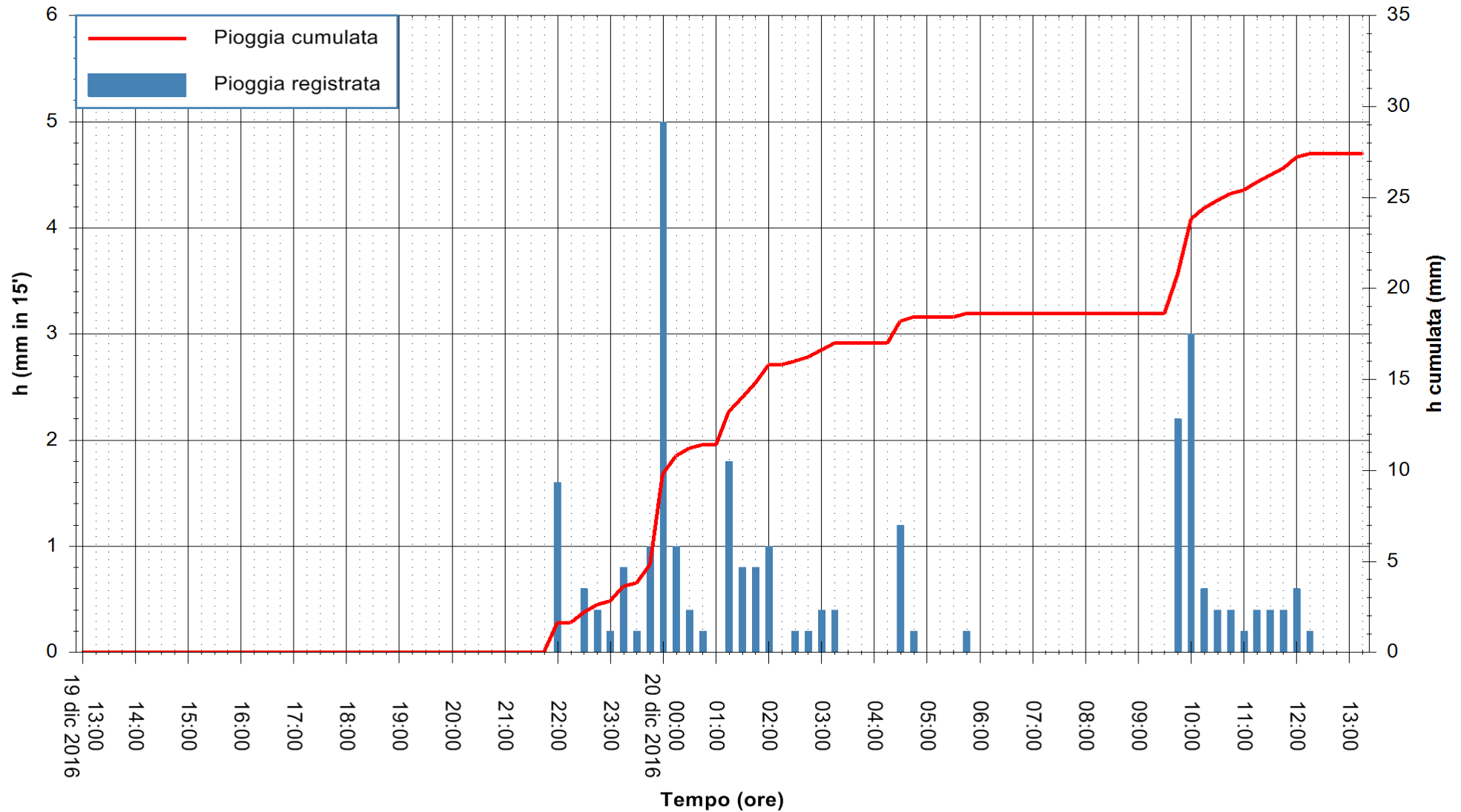


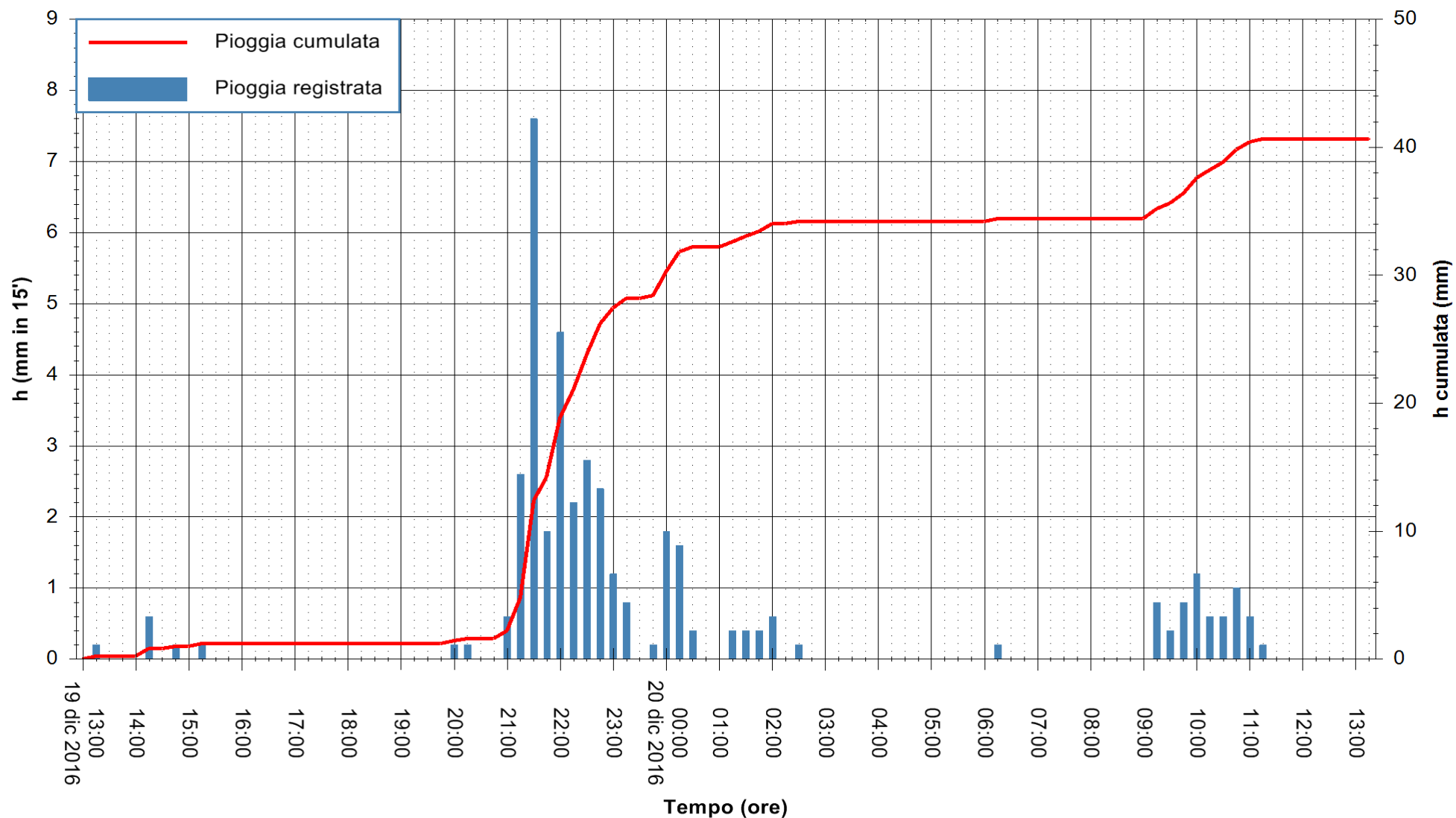


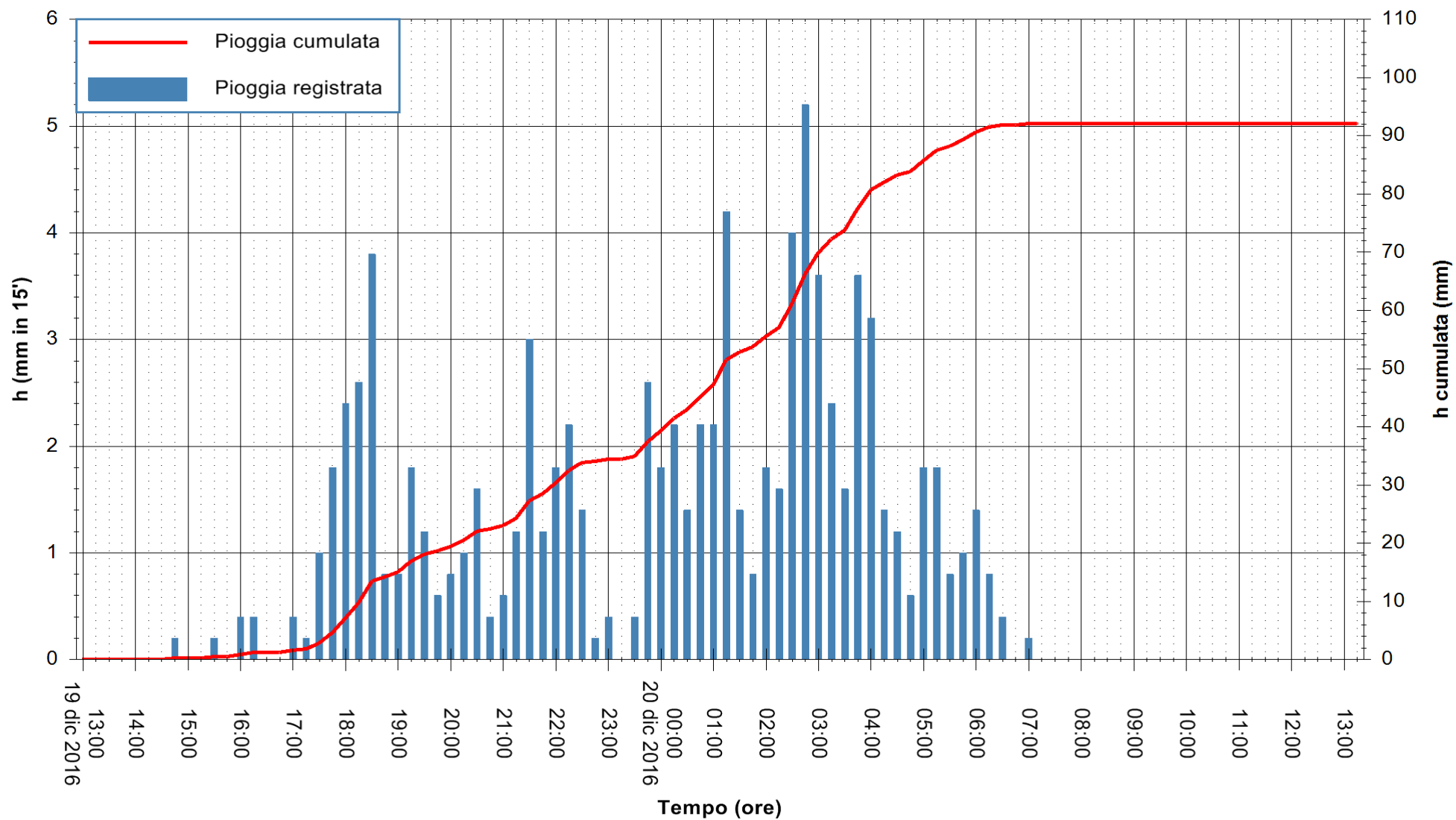










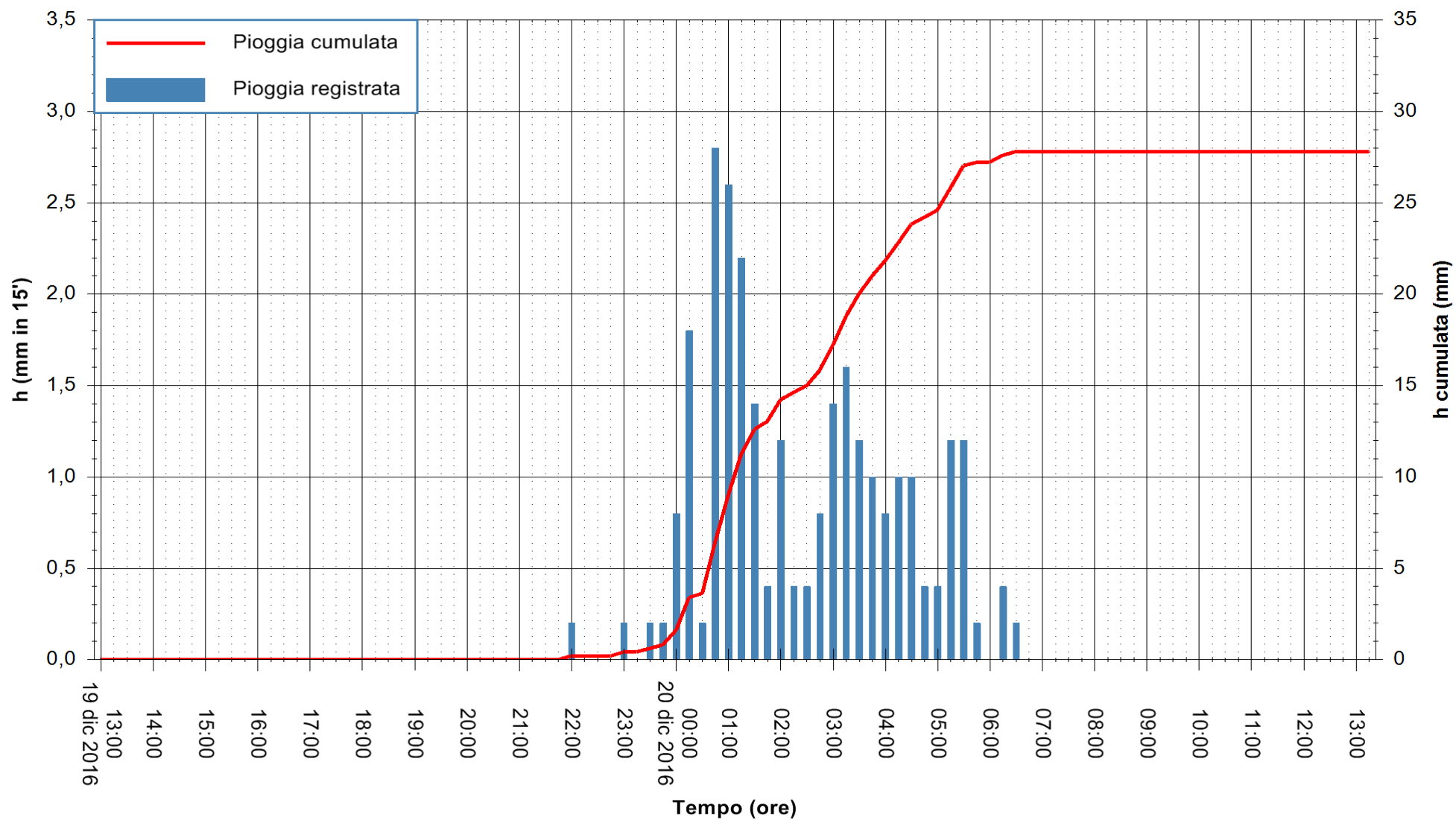


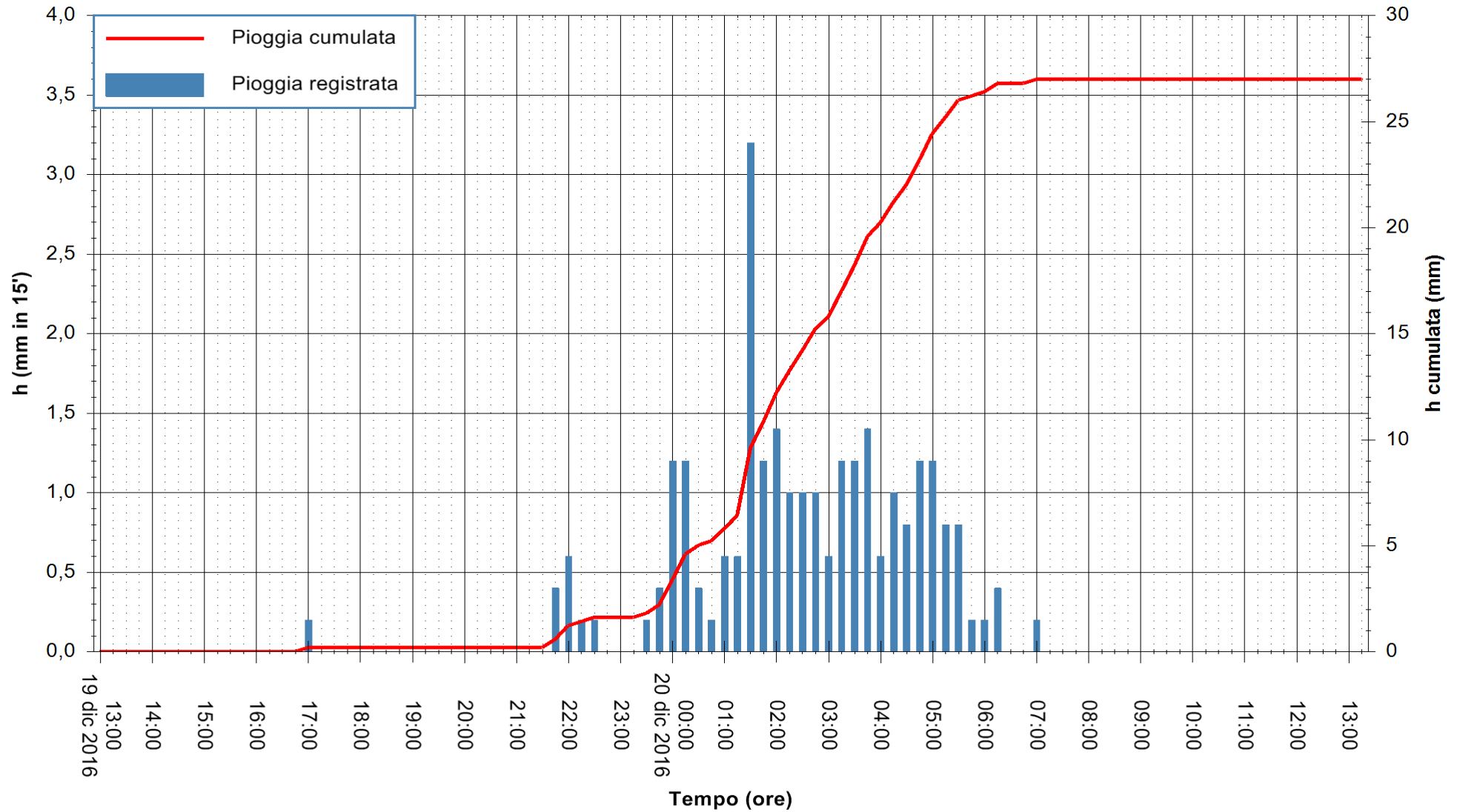
Stazione pluviometrica Mannu di Porto Torres
Area PONTE MOLINU
Pioggia registrata nelle ultime 24 ore
Consultazione alle ore 14:11 del 20/12/2016



ARPAS
F.to il Dirigente Responsabile
Dott. Giuseppe Bianco

REGIONE AUTONOMA DE SARDIGNA
REGIONE AUTONOMA DELLA SARDEGNA



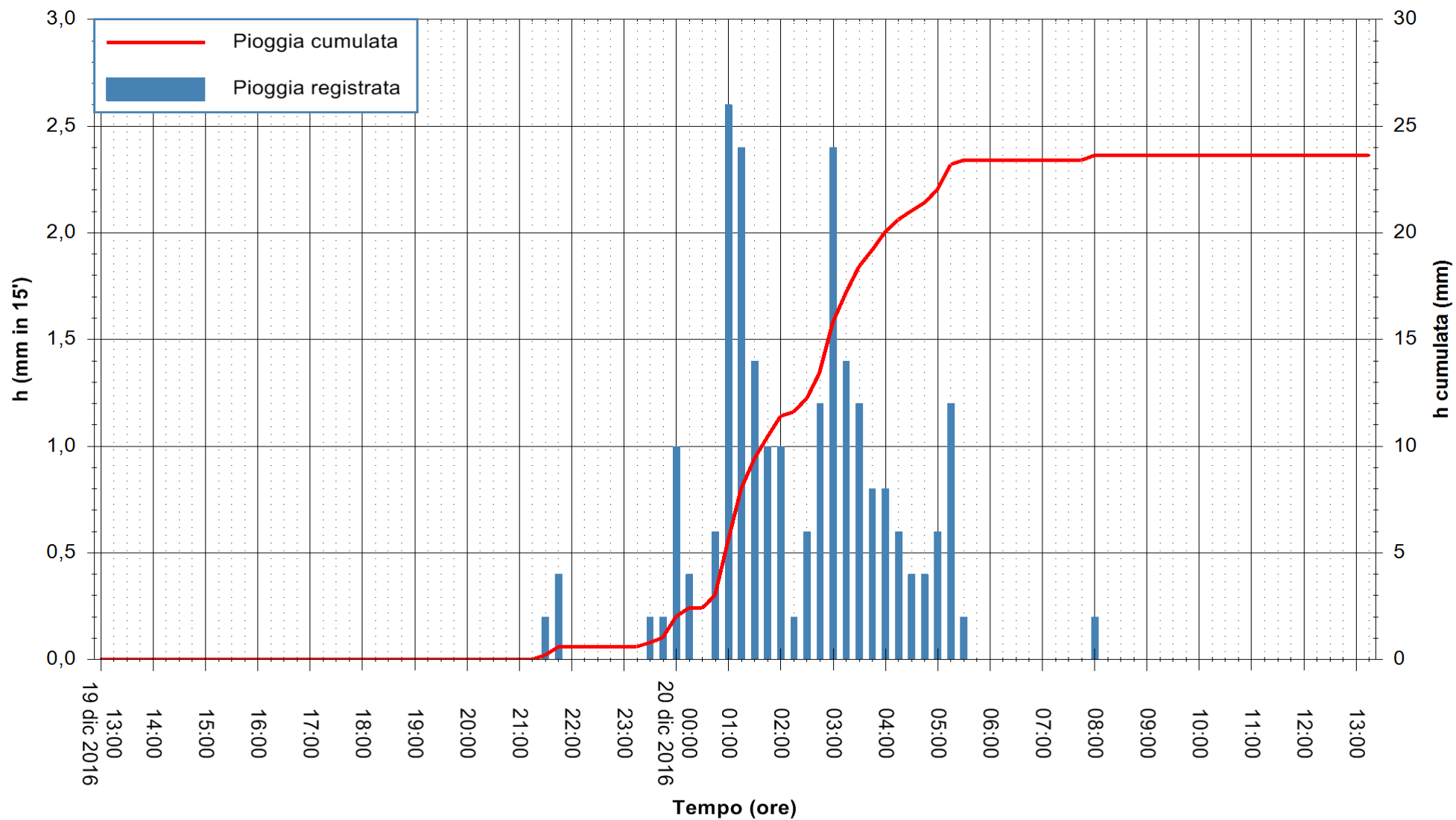


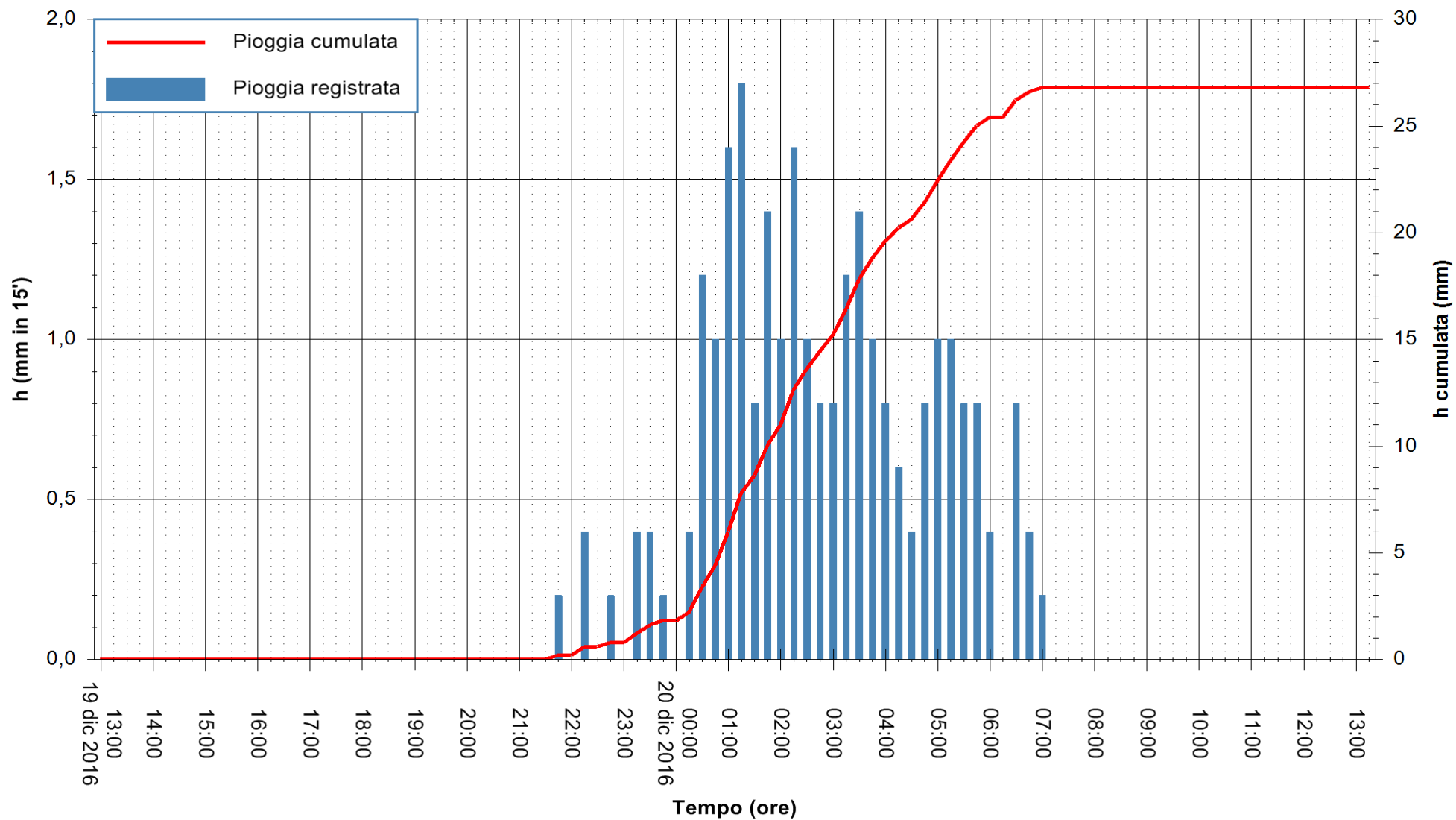
Stazione pluviometrica Pianu
Area PIANU 15
Pioggia registrata nelle ultime 24 ore
Consultazione alle ore 14:11 del 20/12/2016

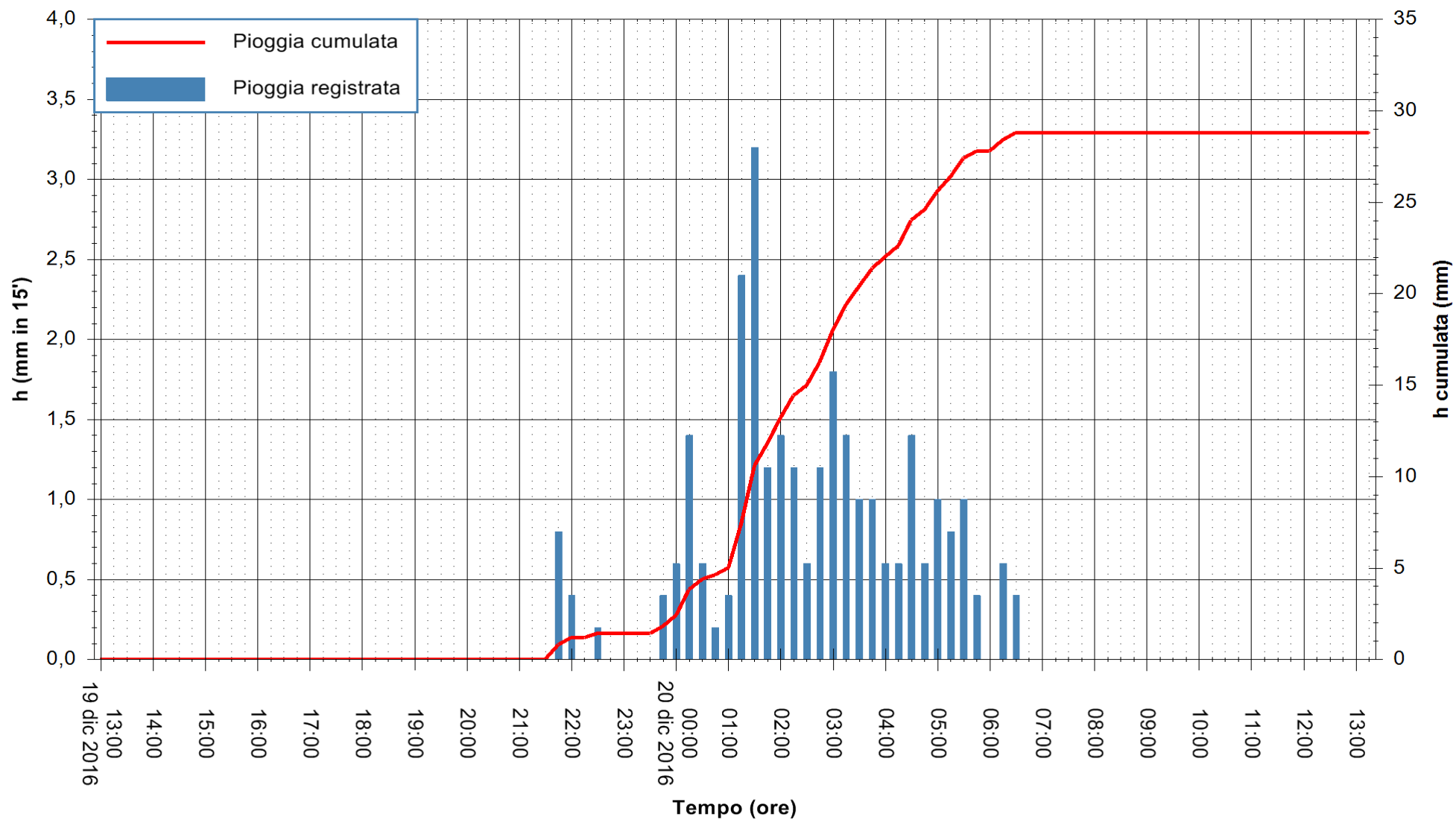


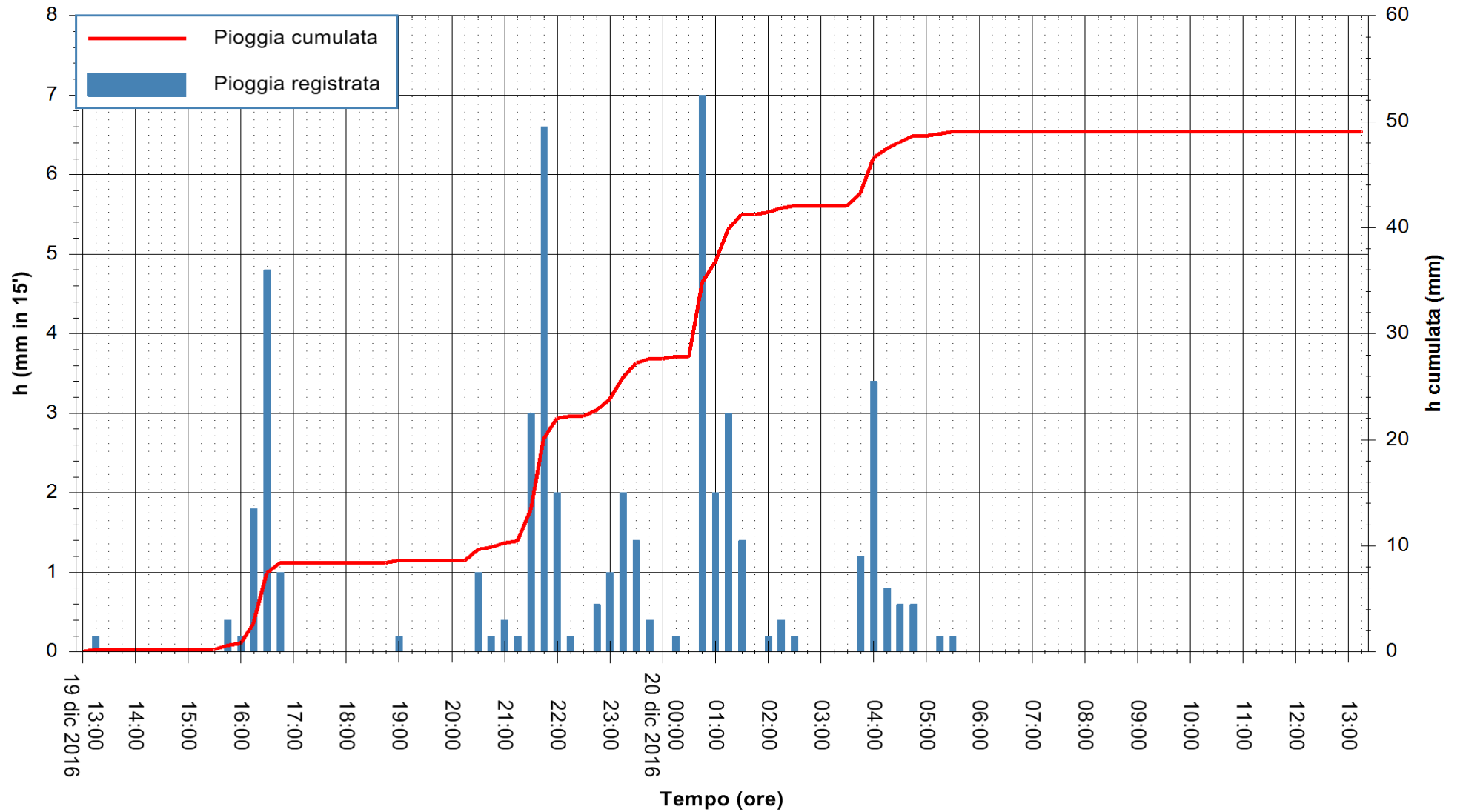
ARPAS
F.to il Dirigente Responsabile
Dott. Giuseppe Bianco

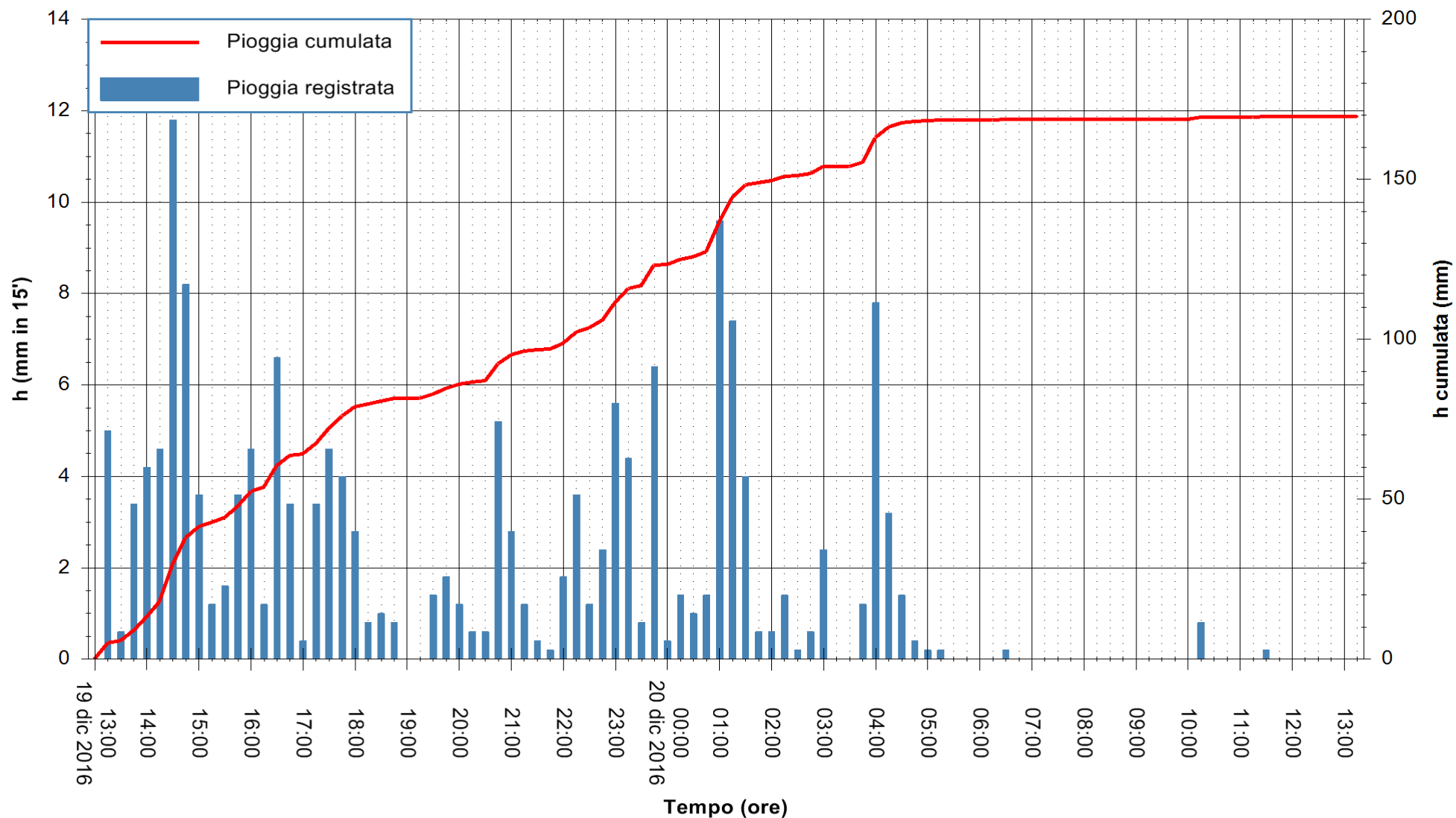
REGIONE AUTÒNOMA DE SARDIGNA
REGIONE AUTONOMA DELLA SARDEGNA

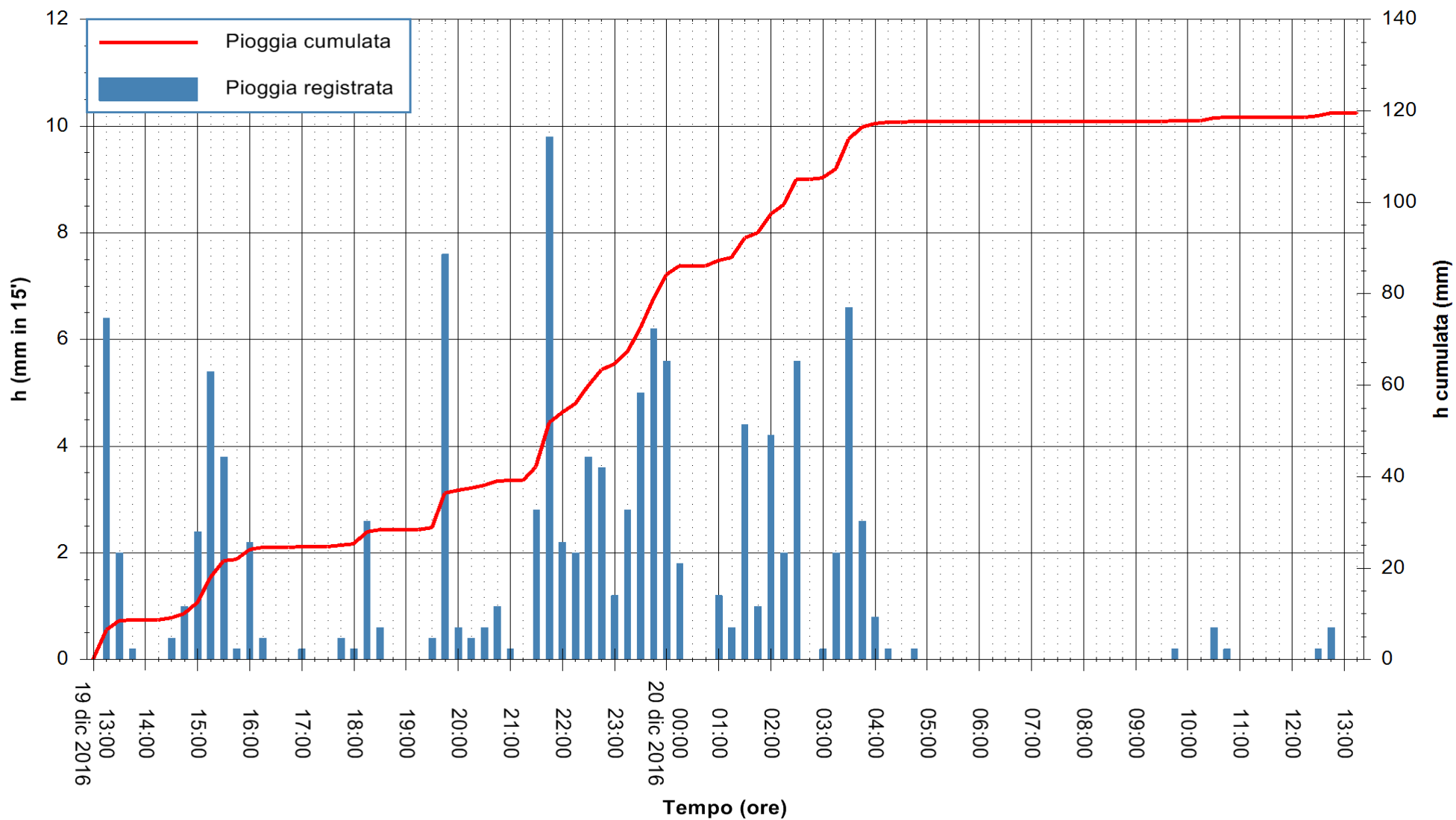


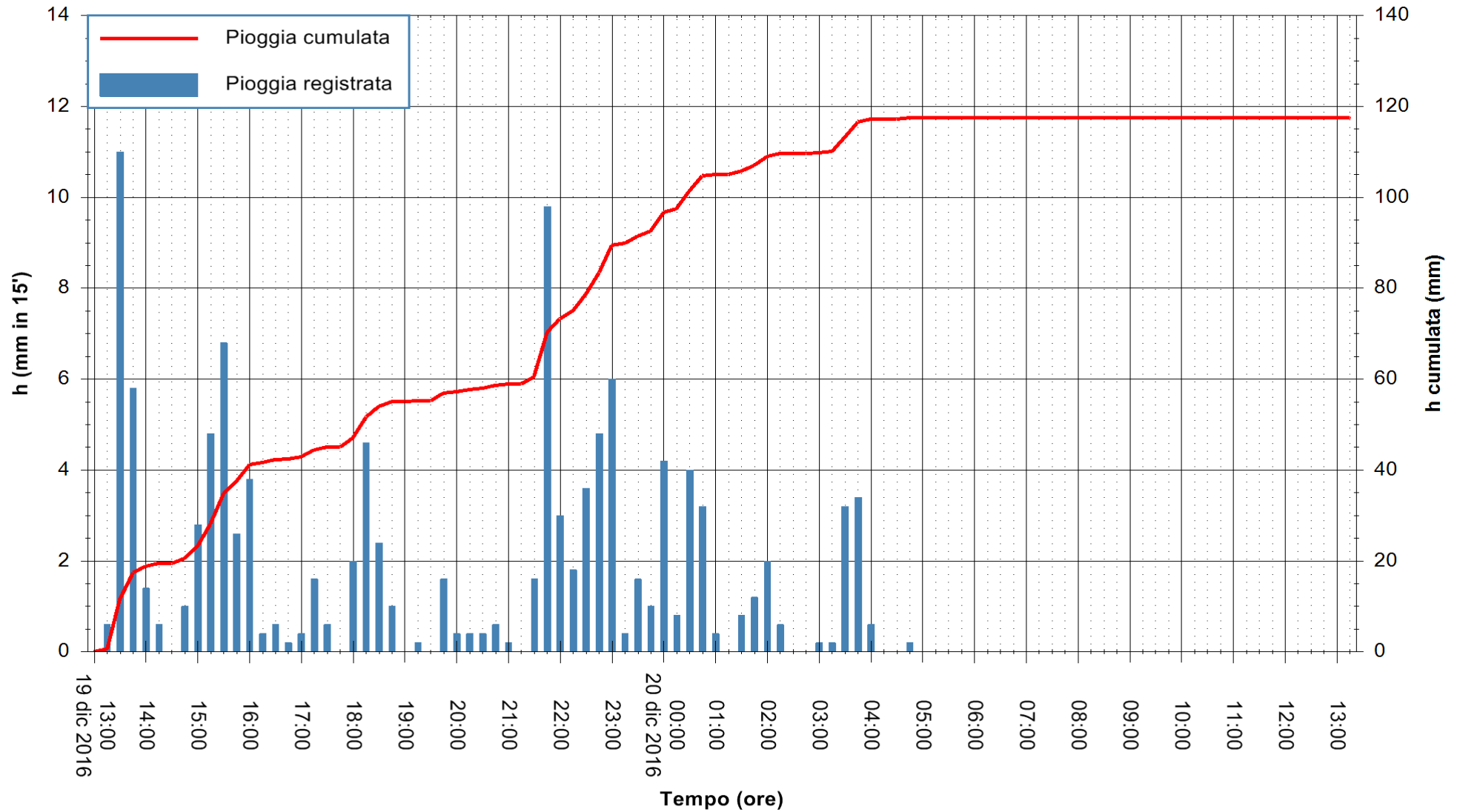


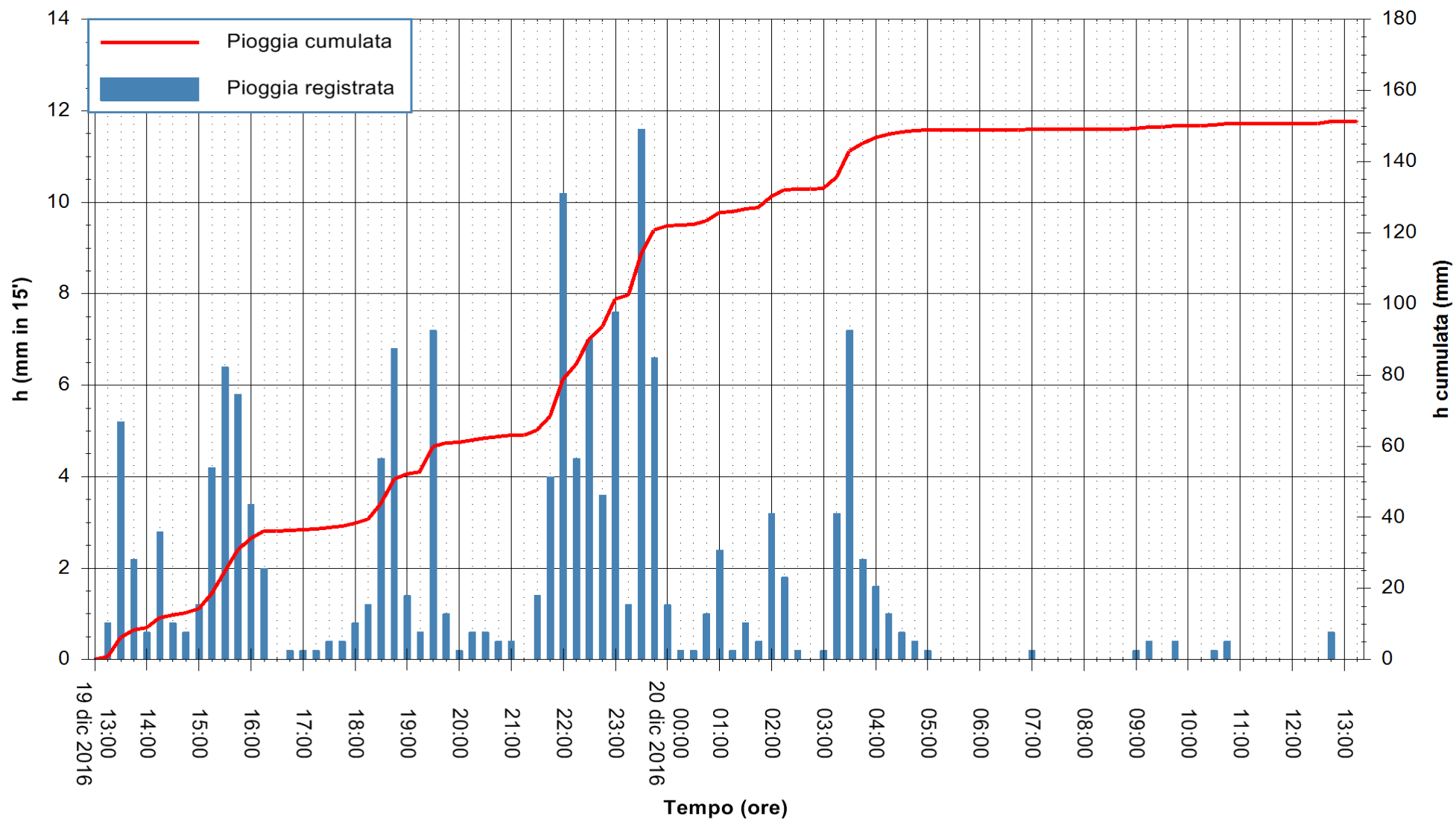


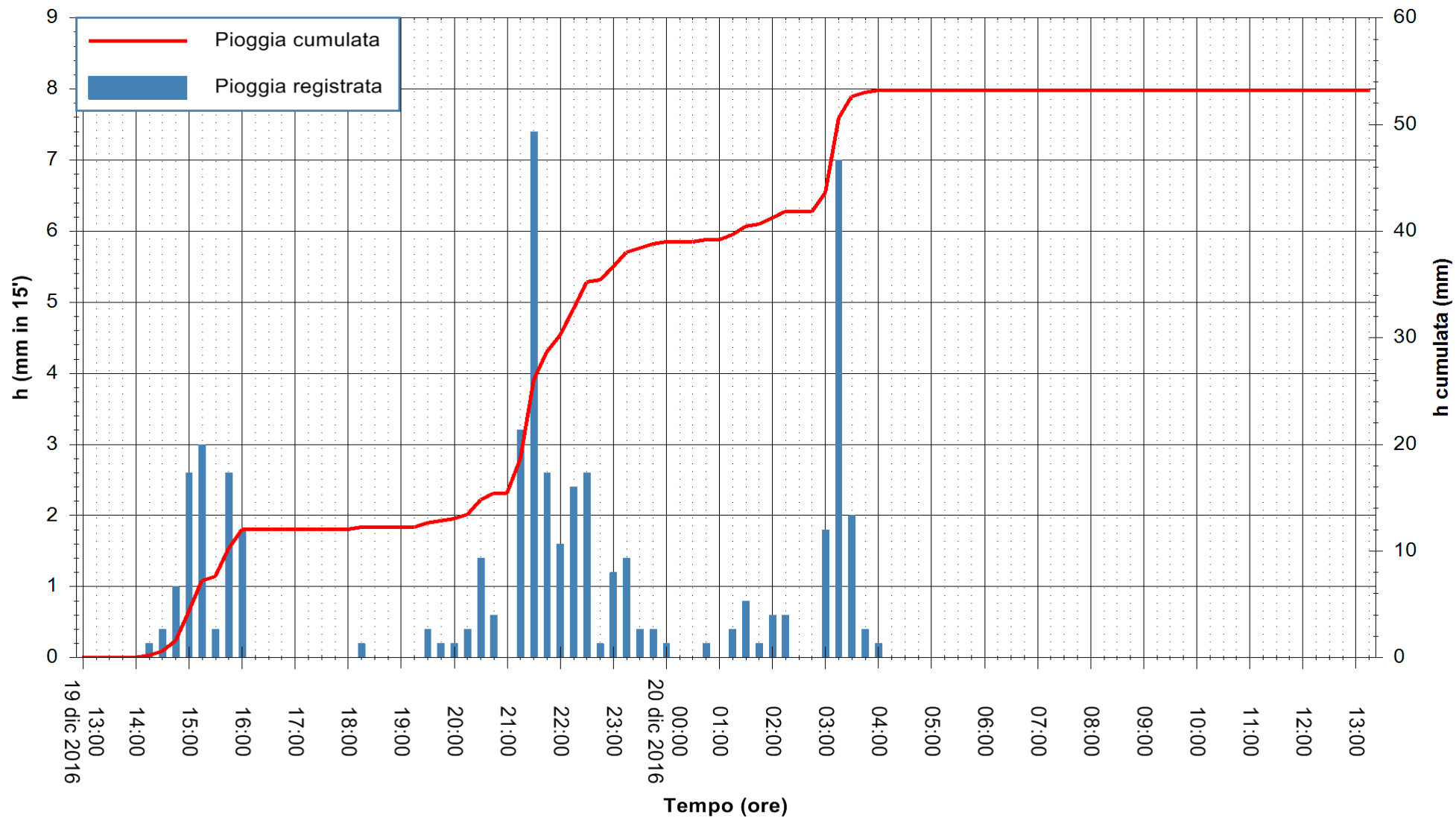


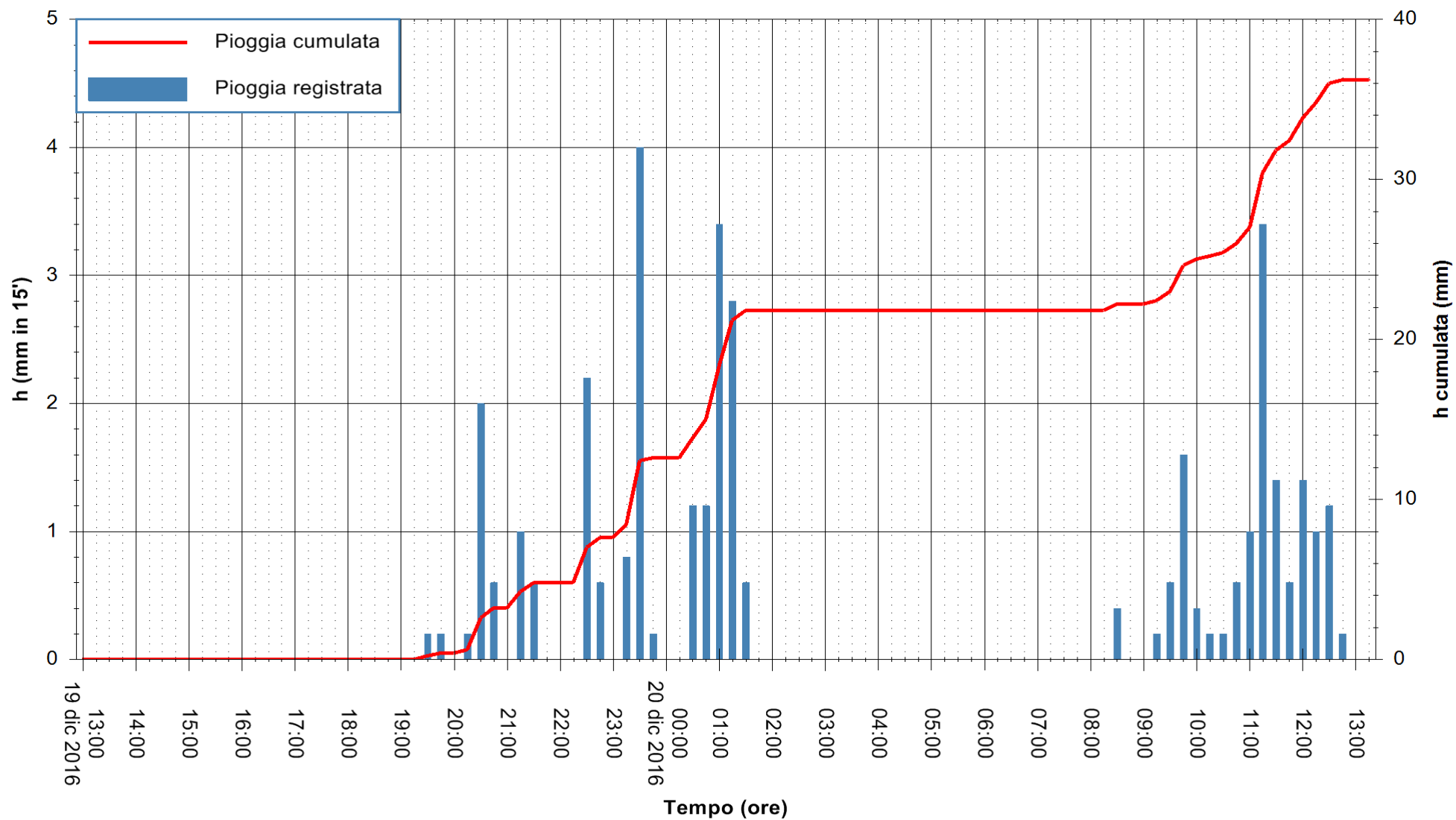


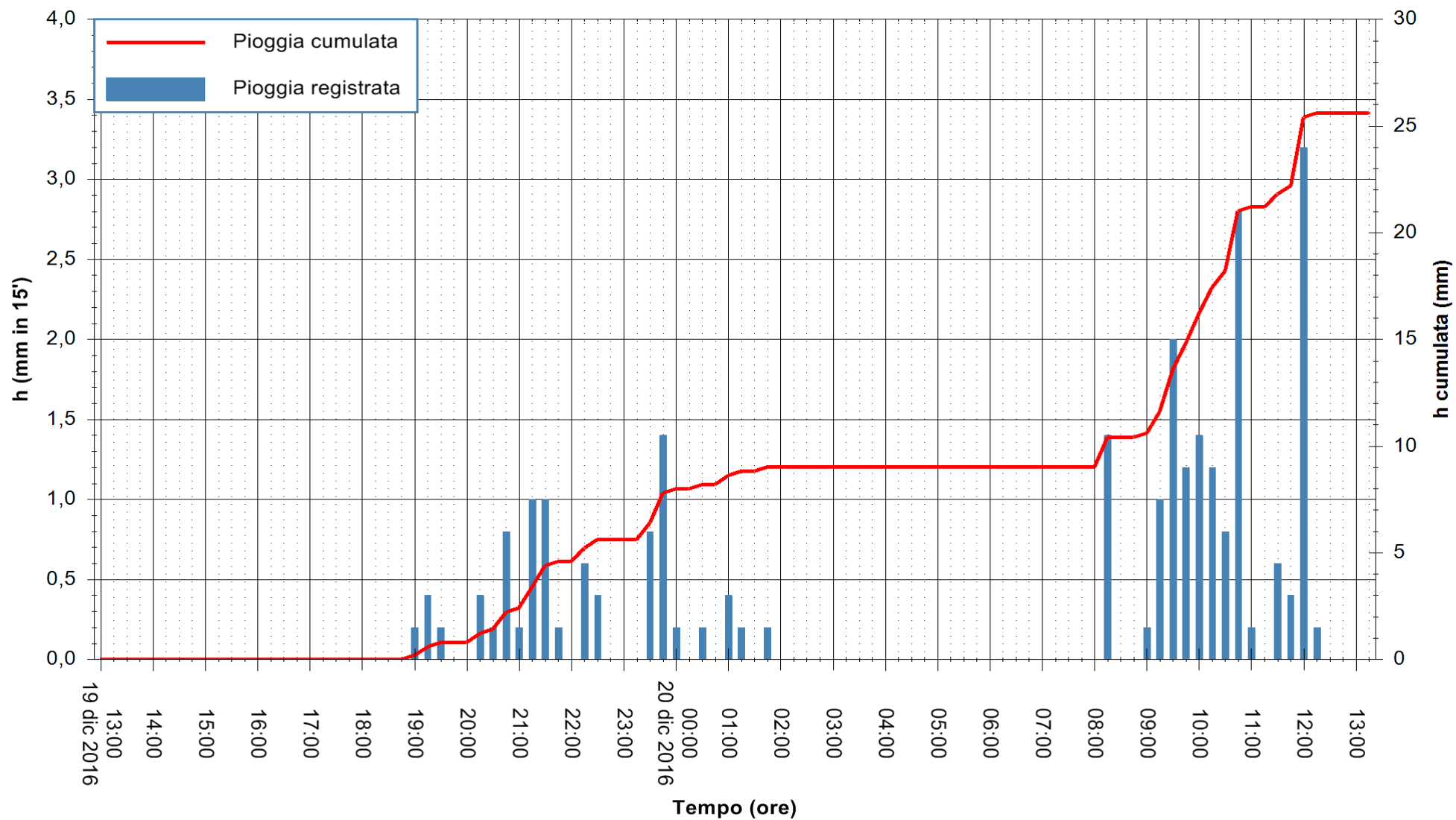


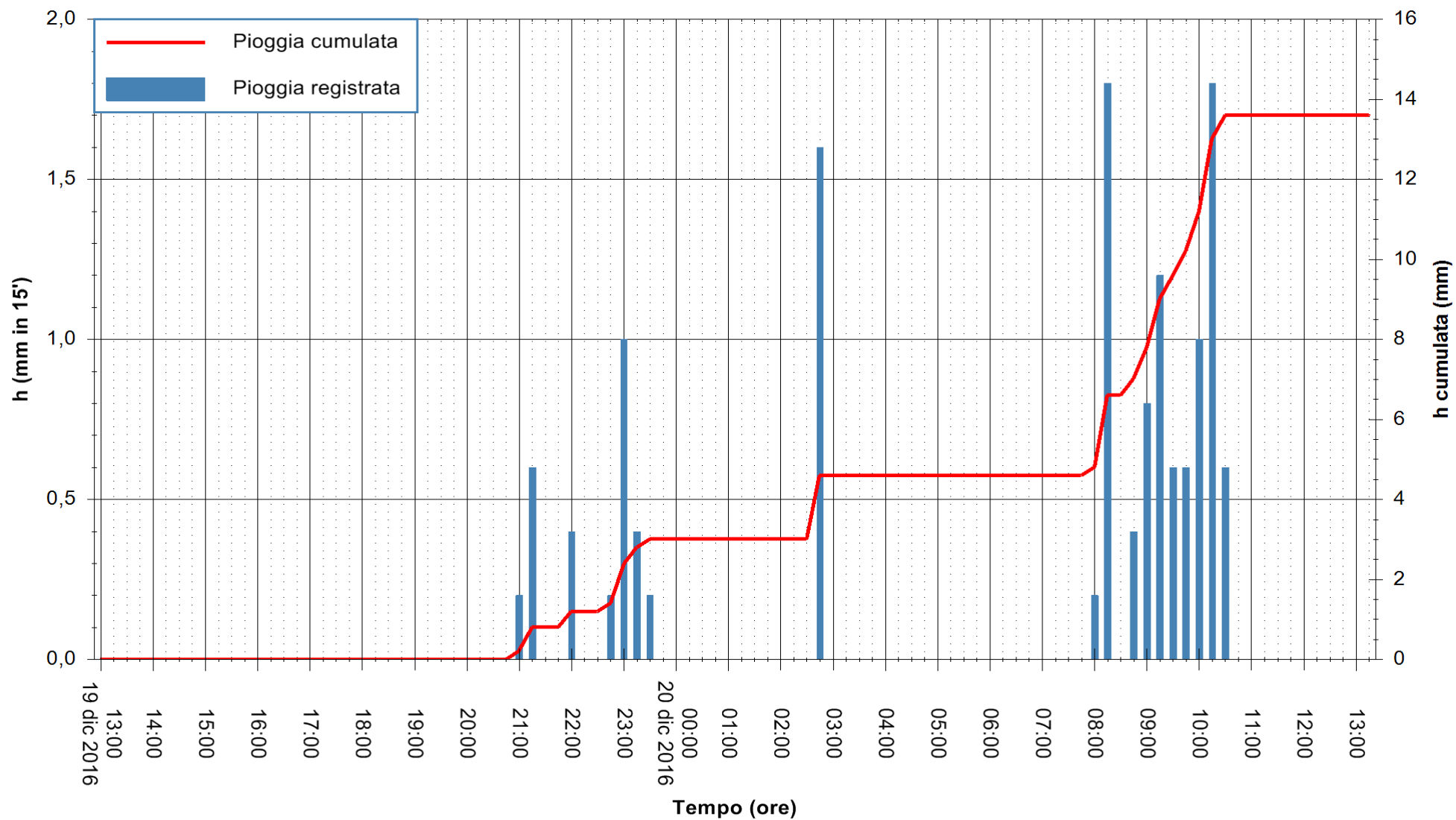


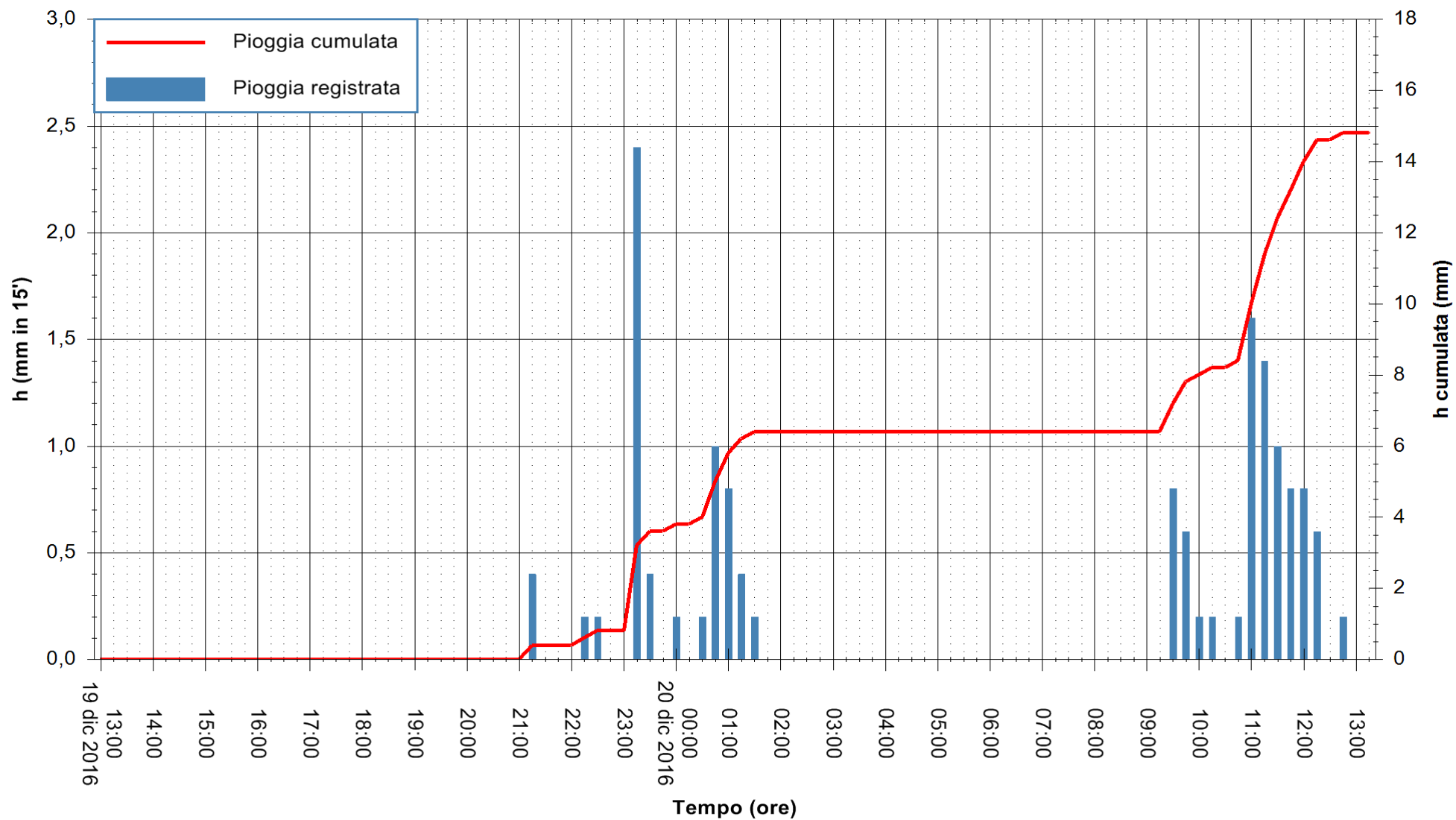












Stazione pluviometrica Santa Lucia di Capoterra
Area S.LUCIA
Pioggia registrata nelle ultime 24 ore
Consultazione alle ore 14:11 del 20/12/2016



ARPAS
F.to il Dirigente Responsabile
Dott. Giuseppe Bianco

REGIONE AUTONOMA DE SARDIGNA
REGIONE AUTONOMA DELLA SARDEGNA

