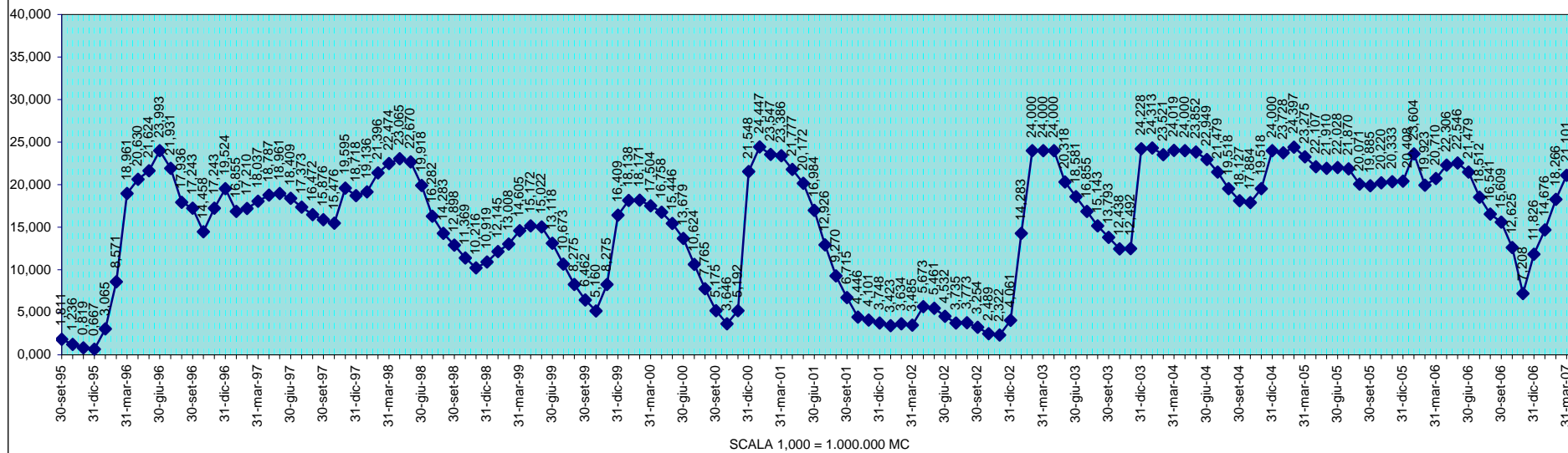
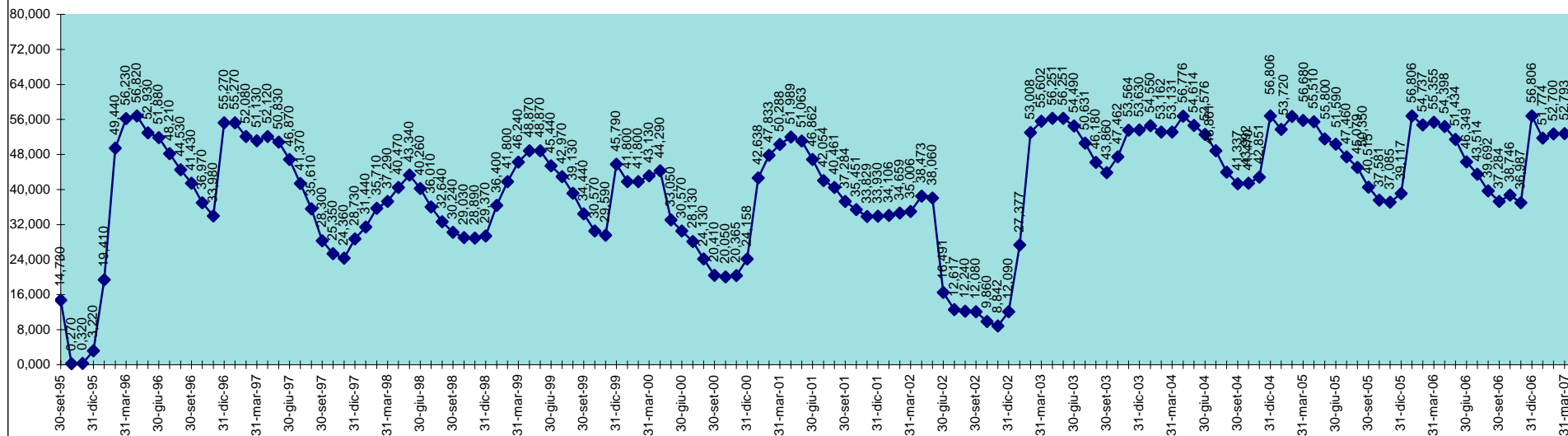


INVASO DEL BASSO CIXERRI
DISPONIBILITA' DAL 30.09.1995 AL 31.03.2007

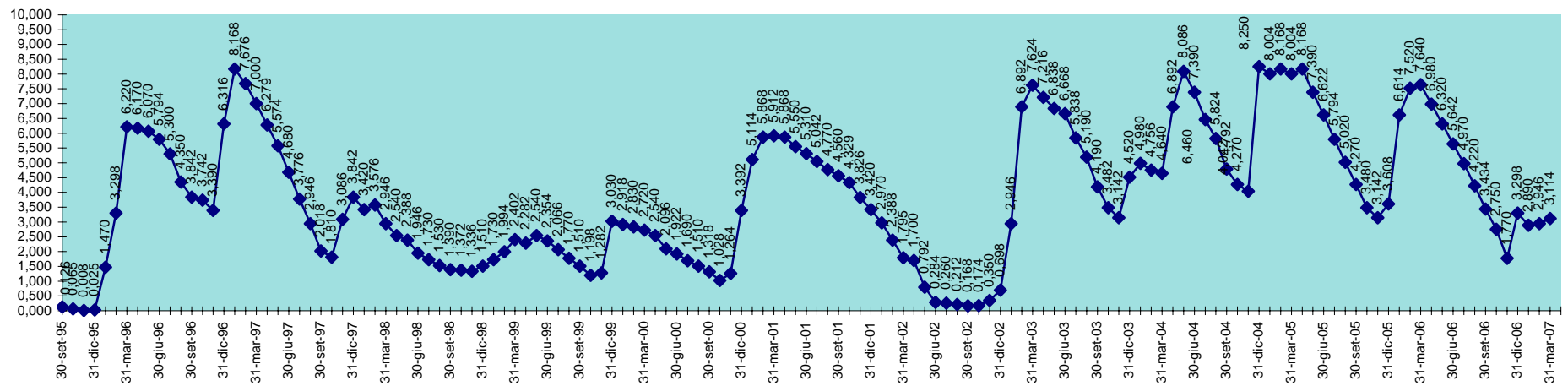


INVASO DI BAU MUGGERIS
DISPONIBILITA' DAL 30.09.1995 AL 31.03.2007



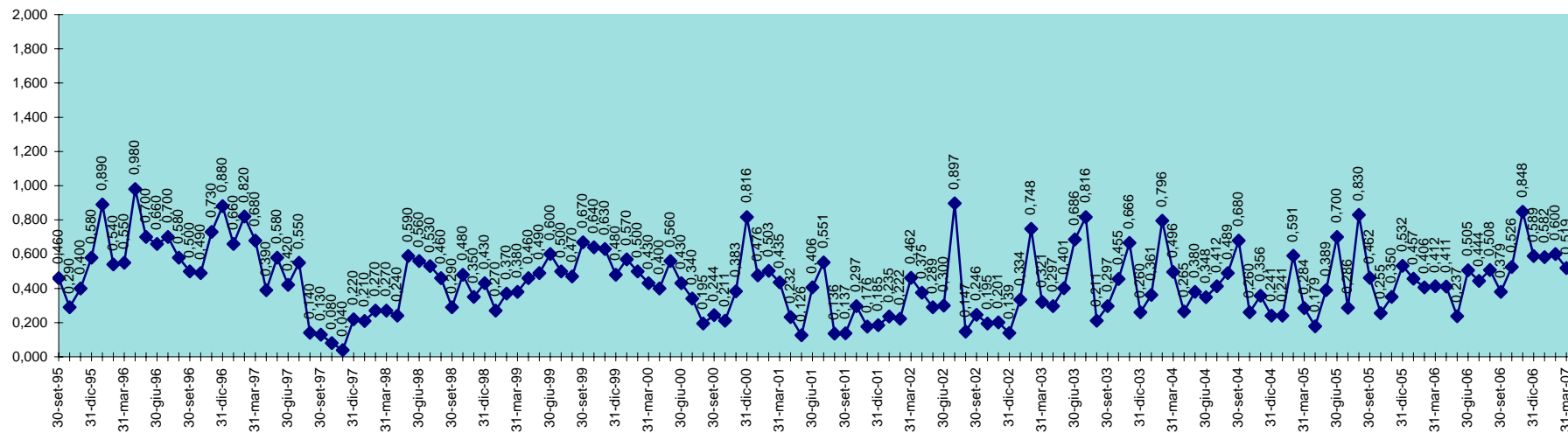
SCALA 1,000 = 1.000.000 MC

INVASO DI BAU PRESSIU
DISPONIBILITA' DAL 30.09.1995 AL 31.03.2007



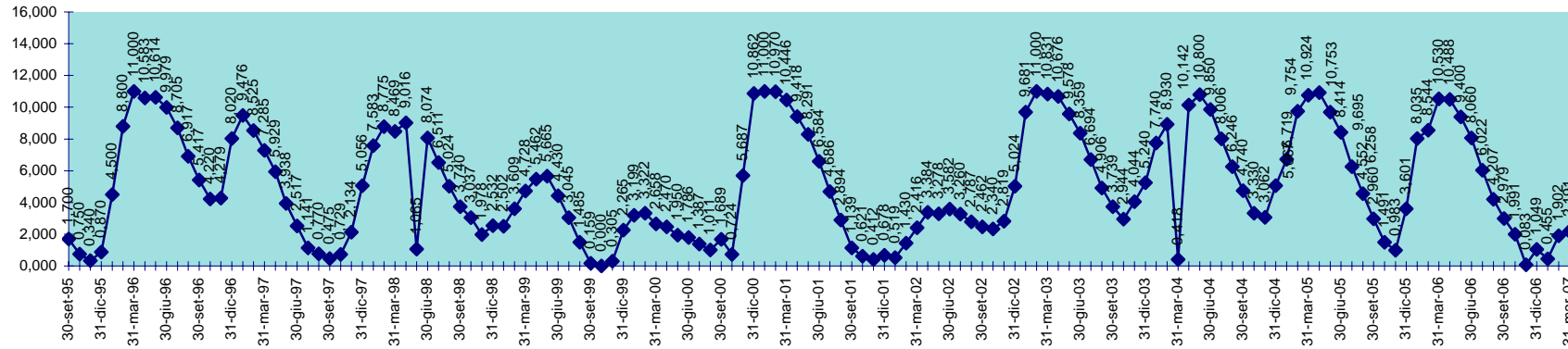
SCALA 1,000 = 1.000.000 MC

INVASO DI BENZONE31.03.200728.02.2007



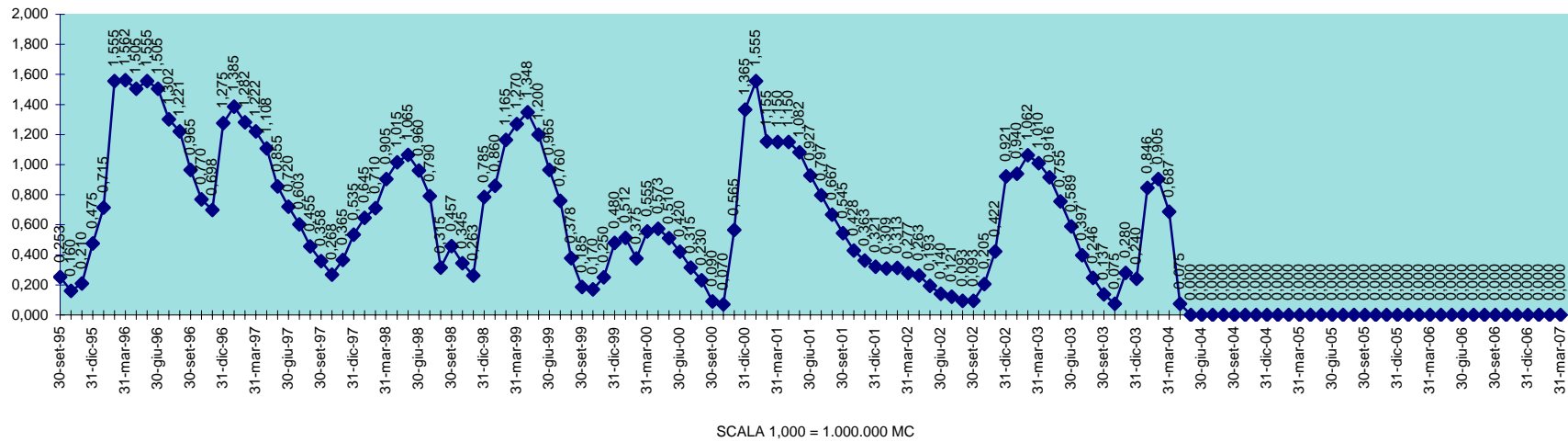
SCALA 1,000 = 1.000.000 MC

INVASO DI BIDIGHINZU
DISPONIBILITA' DAL 30.09.1995 AL 31.03.2007

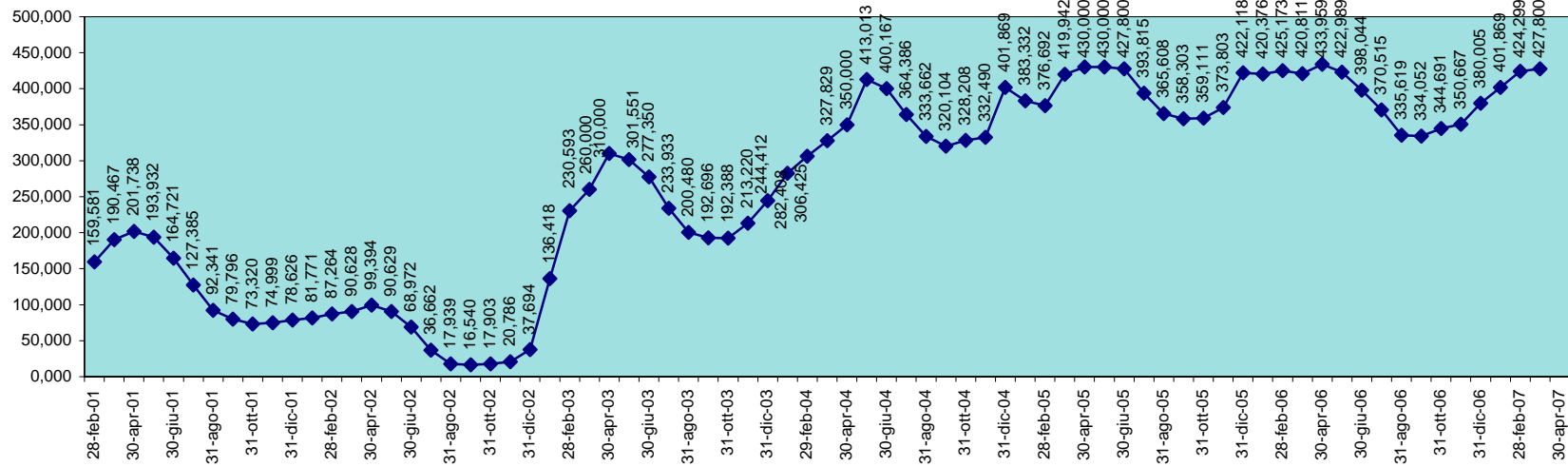


SCALA 1,000 = 1.000.000 MC

INVASO DI BUNNARI
DISPONIBILITA' DAL 30.09.1995 AL 31.03.2007

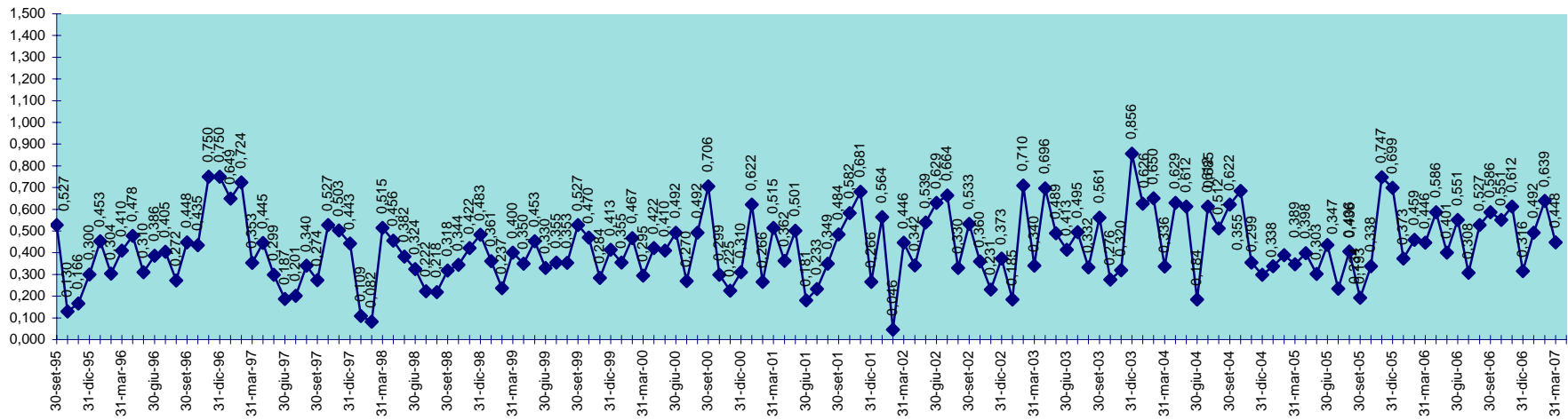


INVASO DI CANTONIERA
DISPONIBILITA' DAL 28.02.2001 AL 31.03.2007



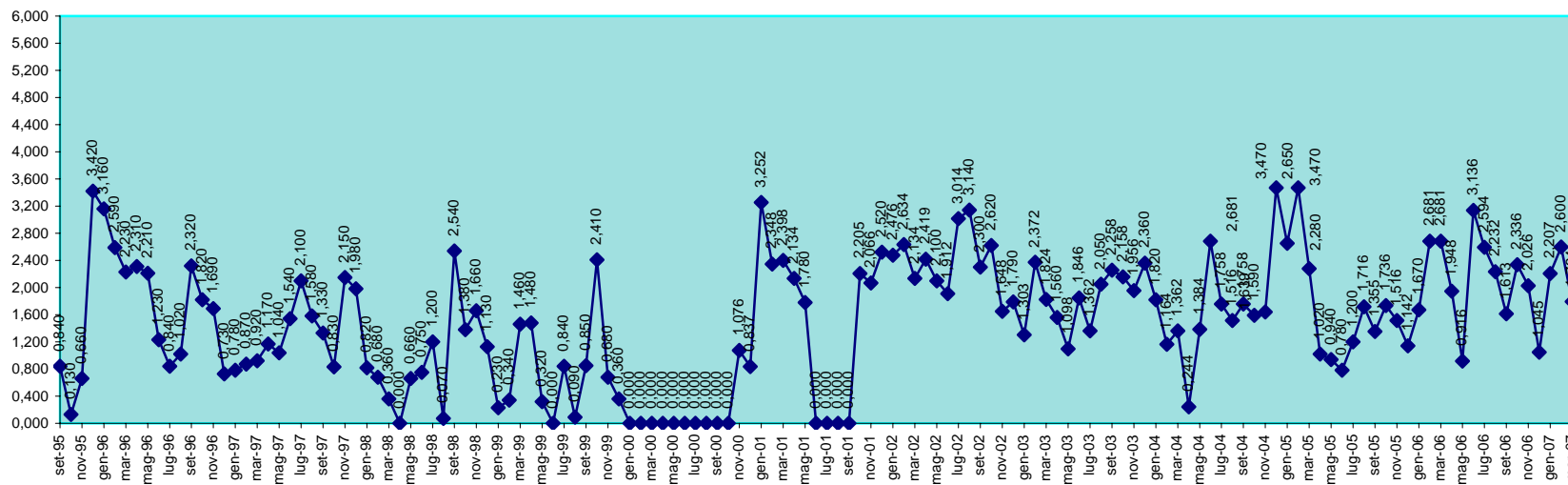
SCALA 1,000 = 1.000.000 MC

INVASO DI CASAFIUME
DISPONIBILITA' DAL 30.09.1995 AL 31.03.2007



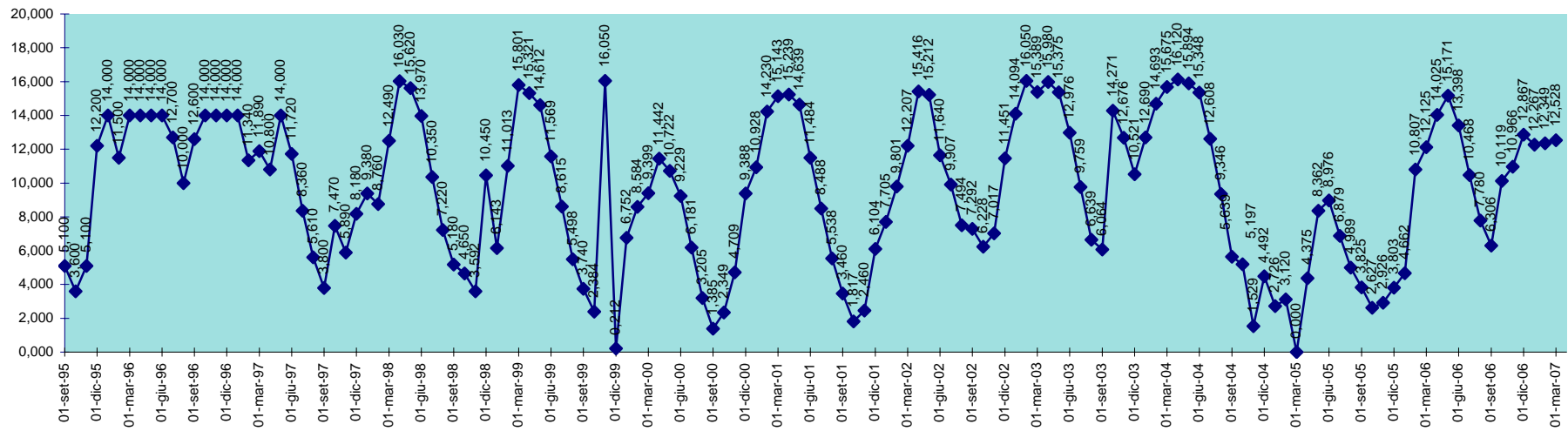
SCALA 1,000 = 1.000.000 MC

INVASO DI CASTELDORIA
DISPONIBILITA' DAL 30.09.1995 AL 31.03.2007



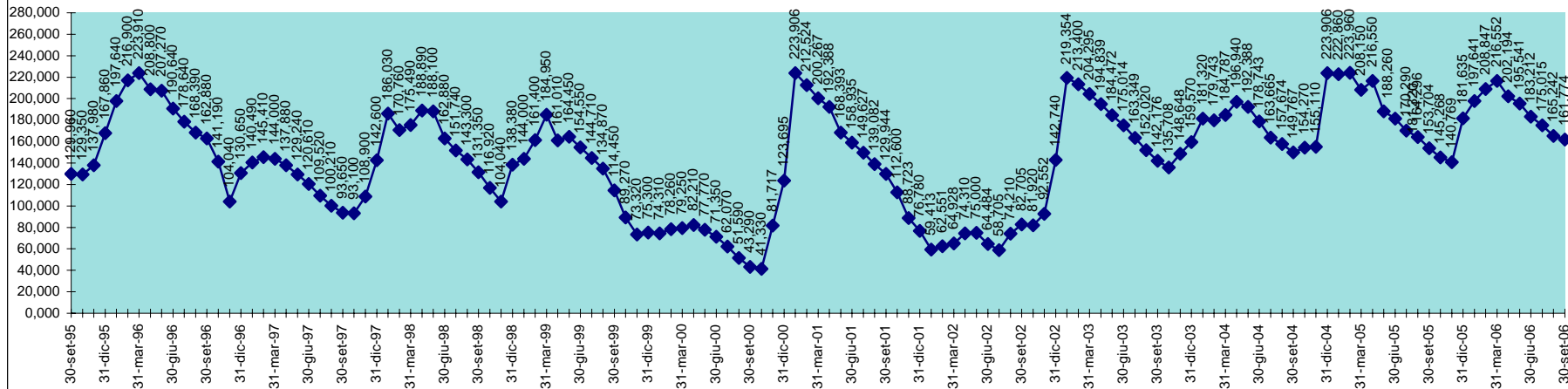
SCALA 1,000 = 1.000.000 MC

INVASO DEL CEDRINO
DISPONIBILITA' DAL 30.09.1995 AL 31.03.2007



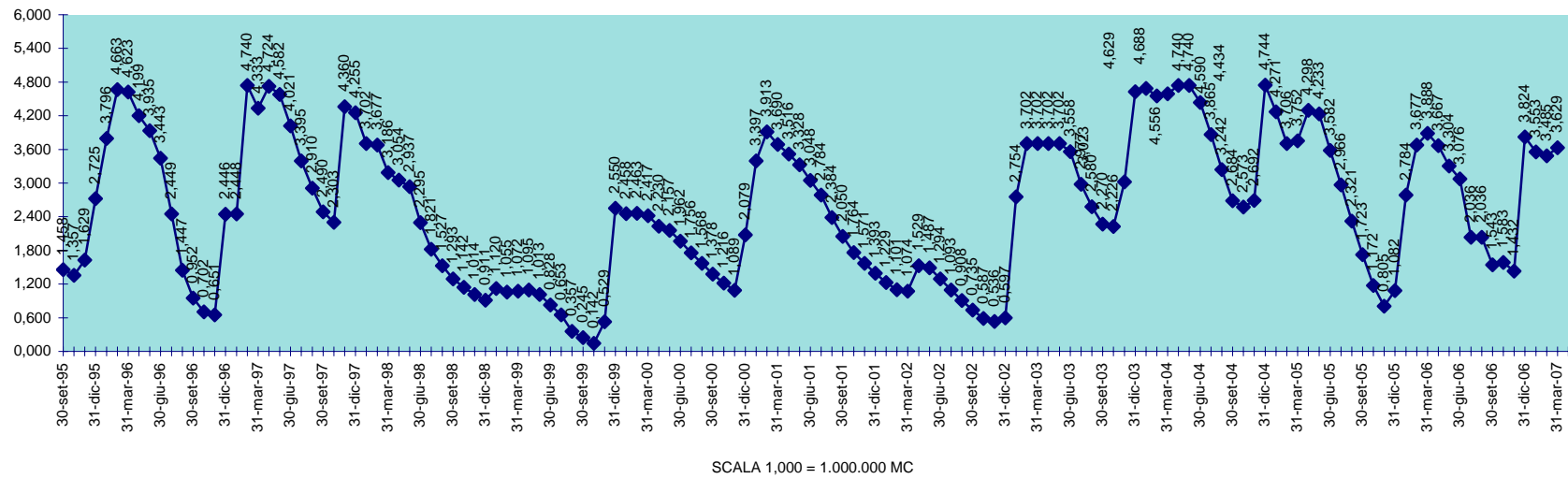
SCALA 1,000 = 1.000.000 MC

INVASO DEL COGHINAS
DISPONIBILITA' DAL 30.09.1995 AL 31.03.2007

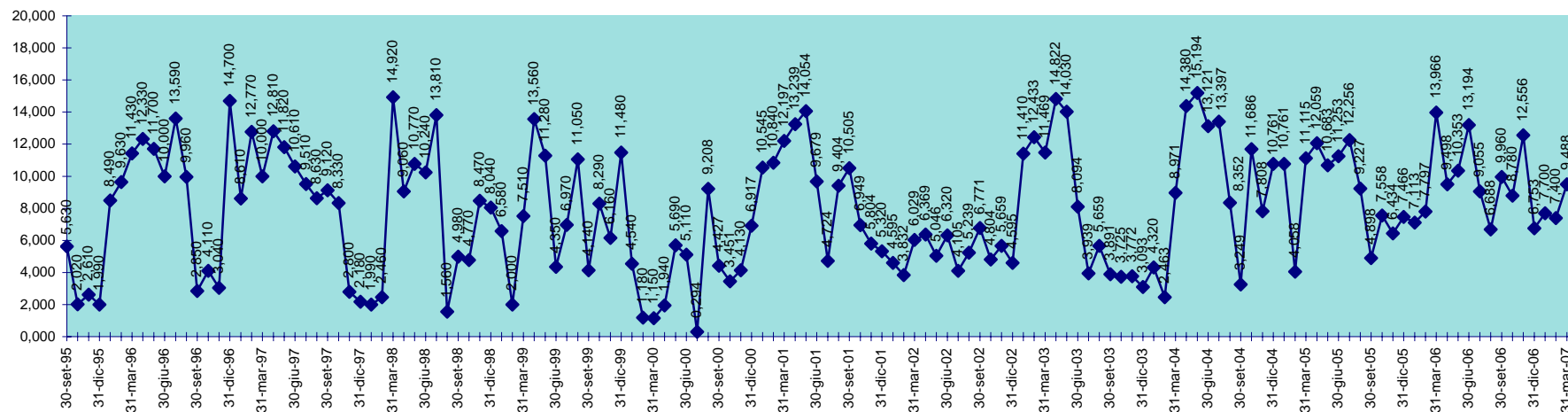


SCALA 1,000 = 1.000.000 MC

INVASO DI CORONGIU
DISPONIBILITA' DAL 30.09.1995 AL 31.03.2007

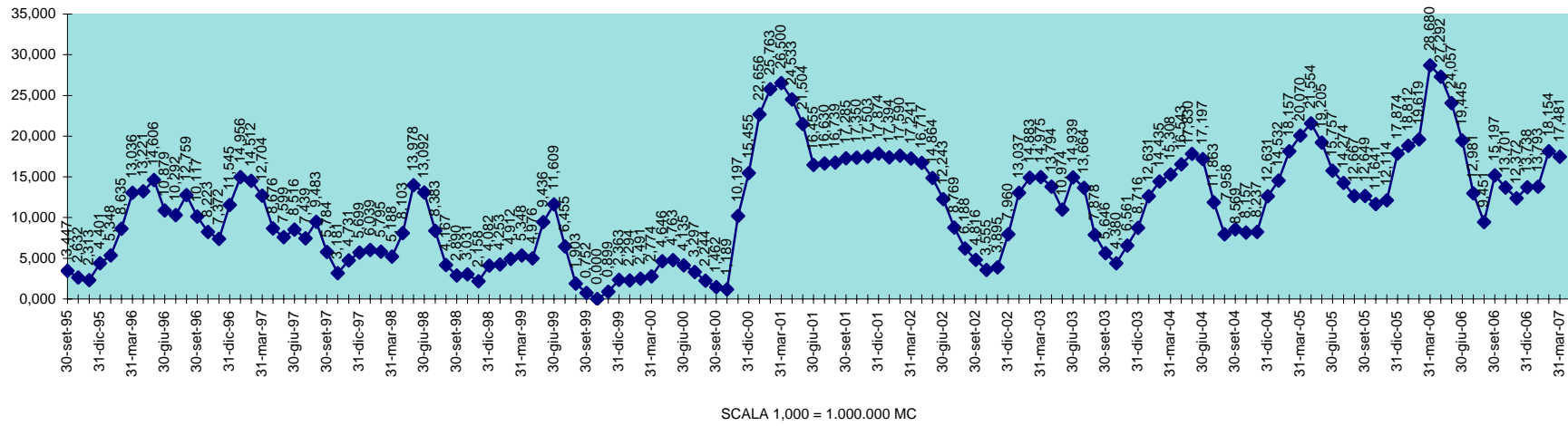


INVASO DI CUCCHINADORZA
DISPONIBILITA' DAL 30.09.1995 AL 31.03.2007

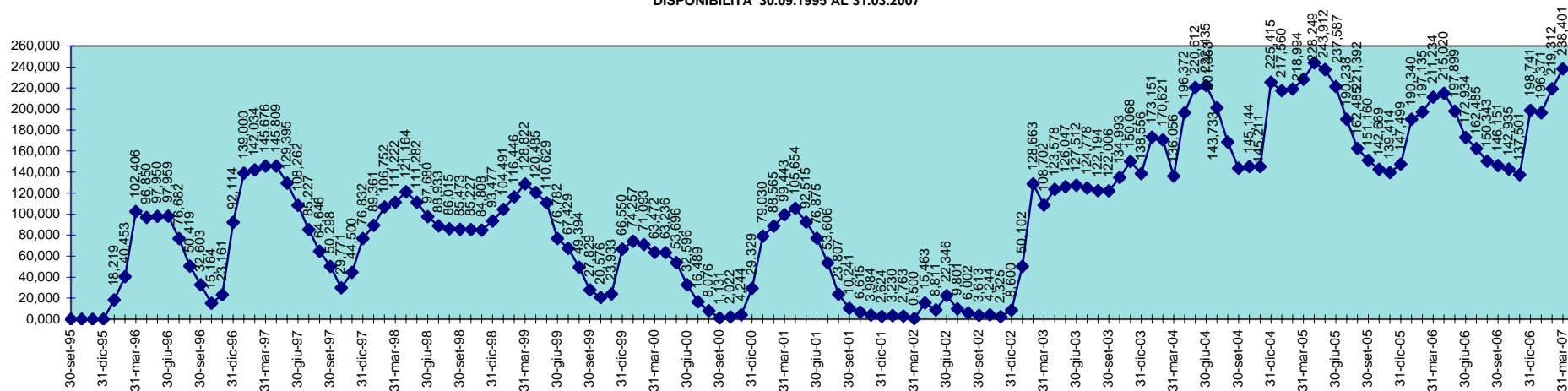


SCALA 1,000 = 1.000.000 MC

INVASO DEL CUGA
DISPONIBILITA' DAL 30.09.1995 AL 31.03.2007

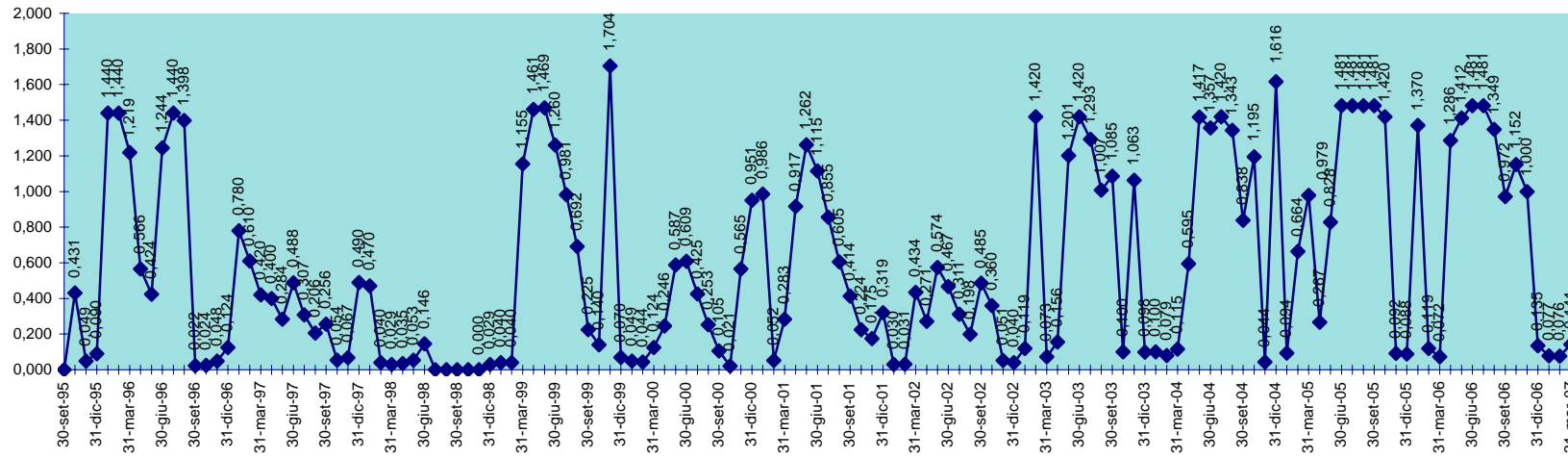


INVASO DEL FLUMENDOSA
DISPONIBILITA' 30.09.1995 AL 31.03.2007



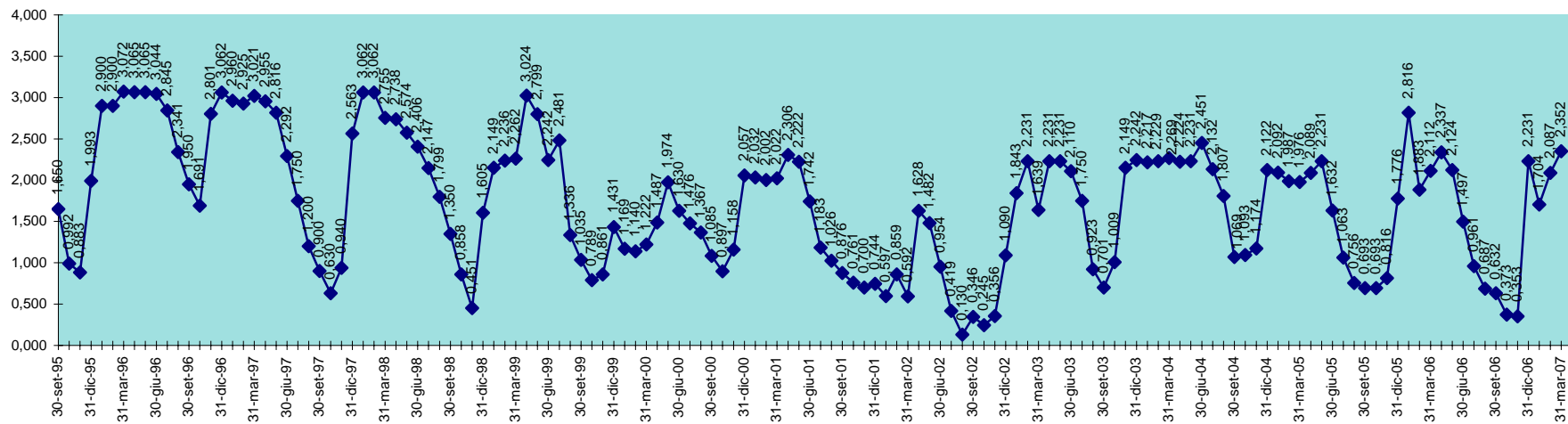
SCALA 1,000 = 1.000.000 MC

INVASO DI FLUMINEDDU
DISPONIBILITA' DAL 30.09.1995 AL 31.03.2007



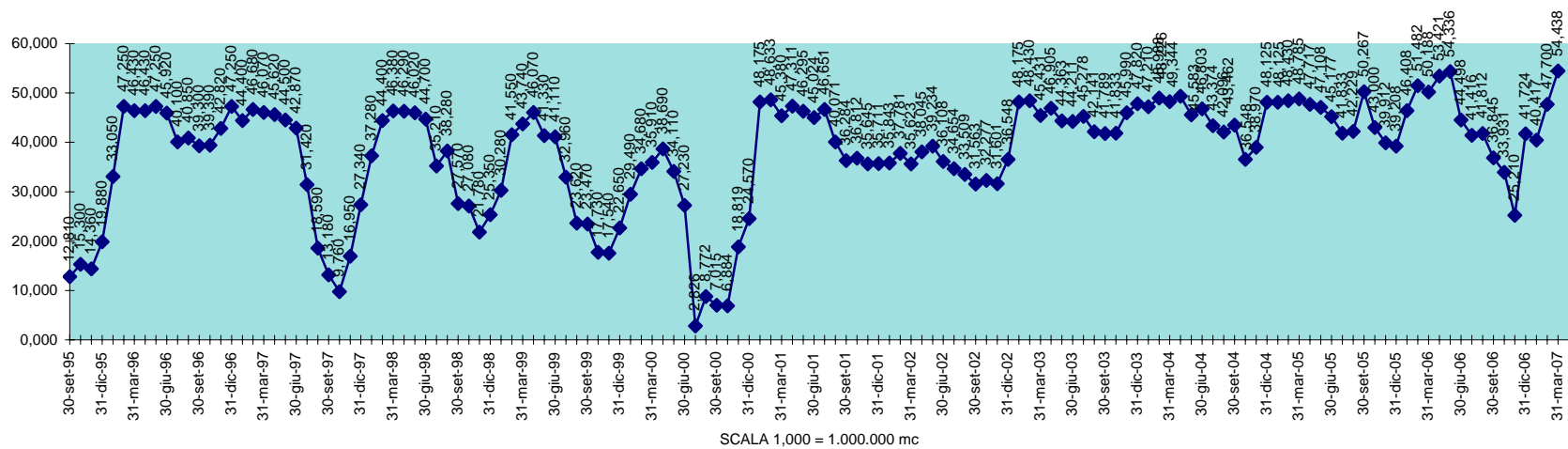
SCALA 1,000 = 1.000.000 MC

INVASO DI GOVSSAI
DISPONIBILITA' DAL 30.04.1995 AL 31.03.2007

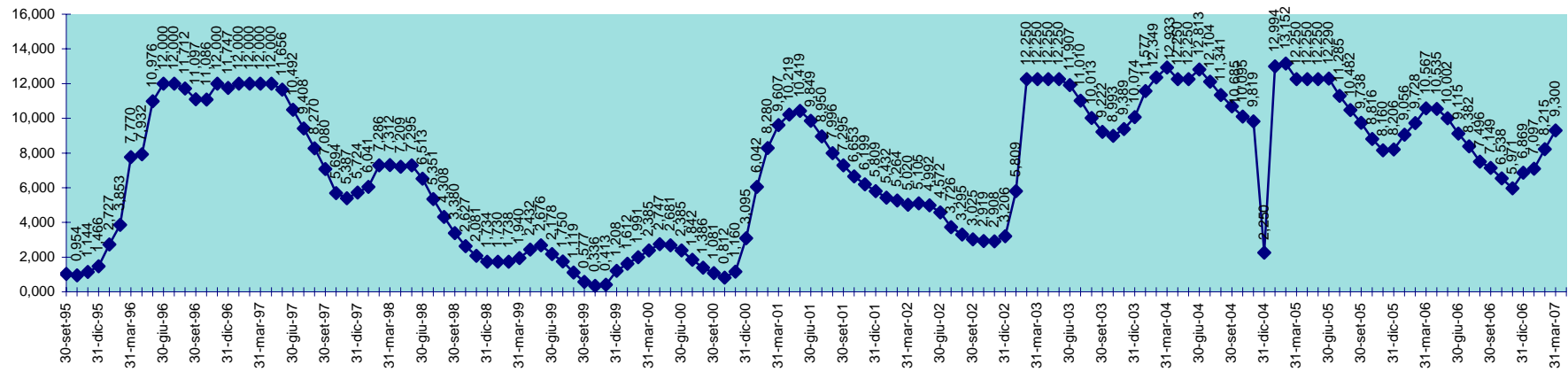


SCALA 1,000 = 1.000.000 MC

INVASO DI GUSANA
 DISPONIBILITA' DAL 30.09.1995 AL 31.03.2007

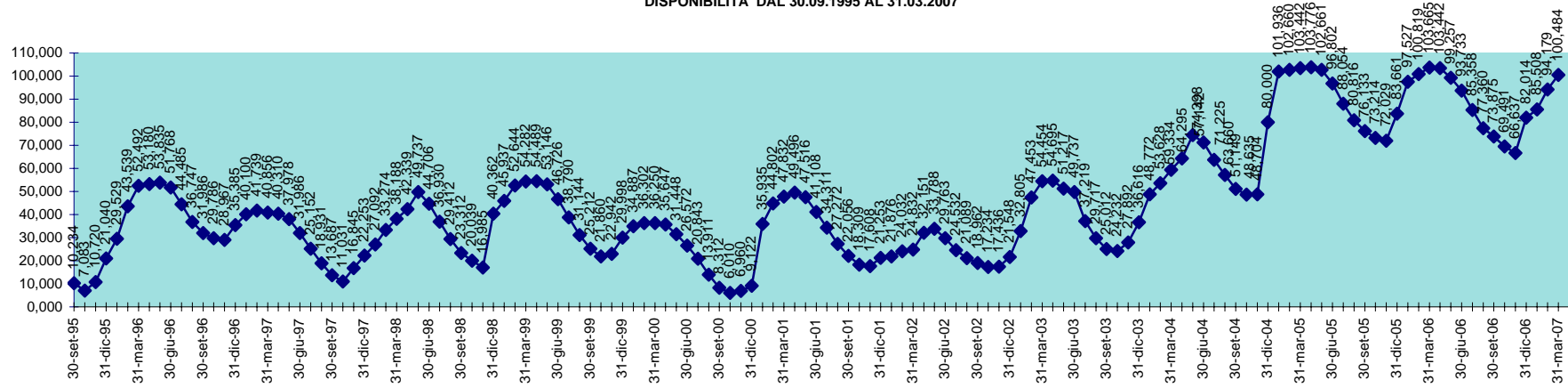


INVASO DI IS BAROCUS
DISPONIBILITA' DAL 30.09.1995 AL 31.03.2007



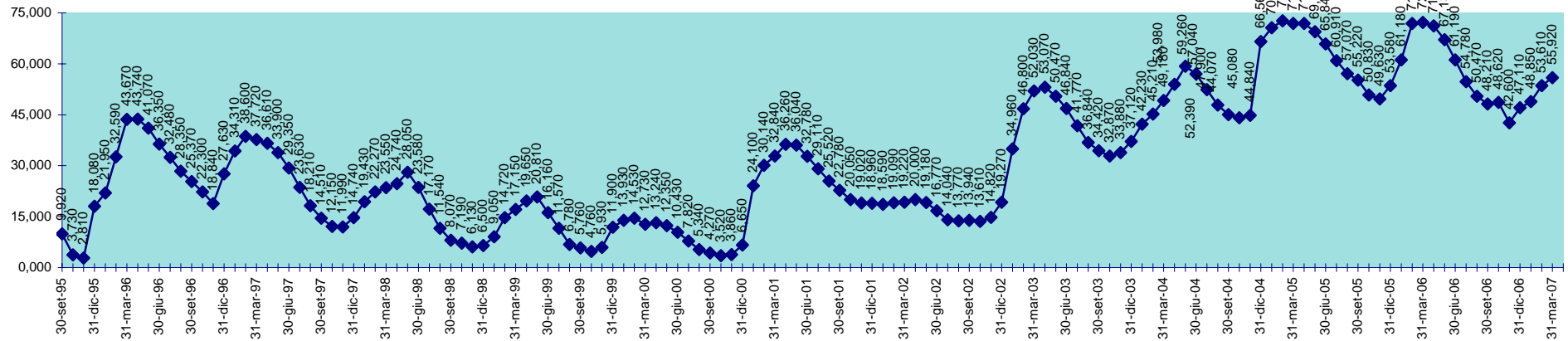
SCALA 1,000 = 1.000.000 MC

INVASO DEL LISCIA
DISPONIBILITA' DAL 30.09.1995 AL 31.03.2007



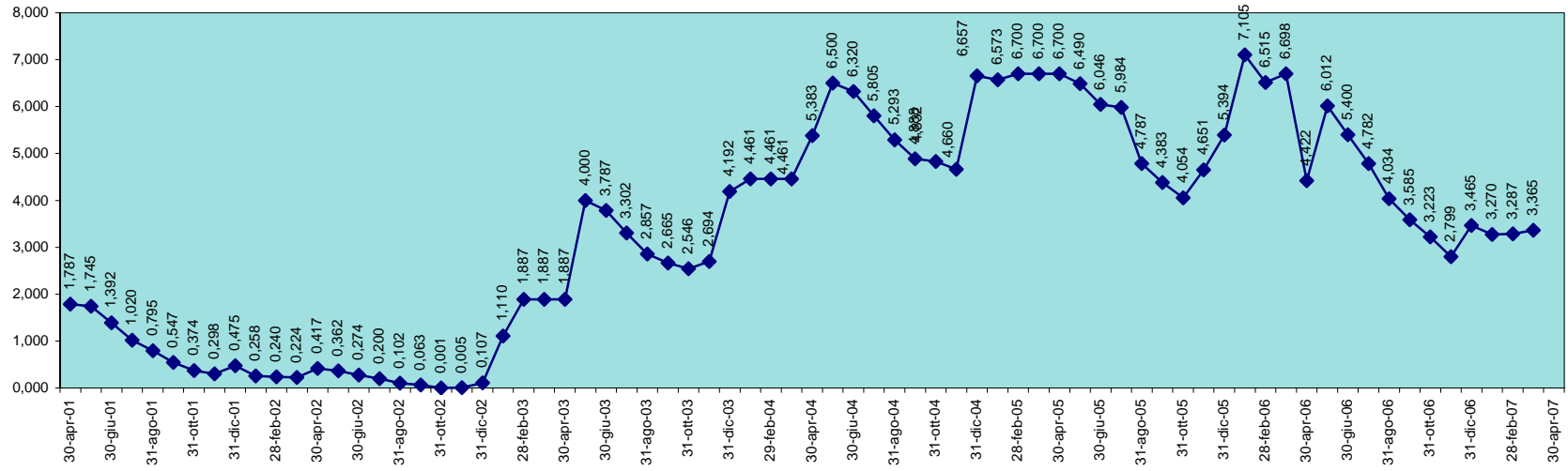
SCALA 1,000 = 1.000.000 MC

INVASO DI MANNU PATTADA
DISPONIBILITA' DAL 30.09.1995 AL 31.03.2007

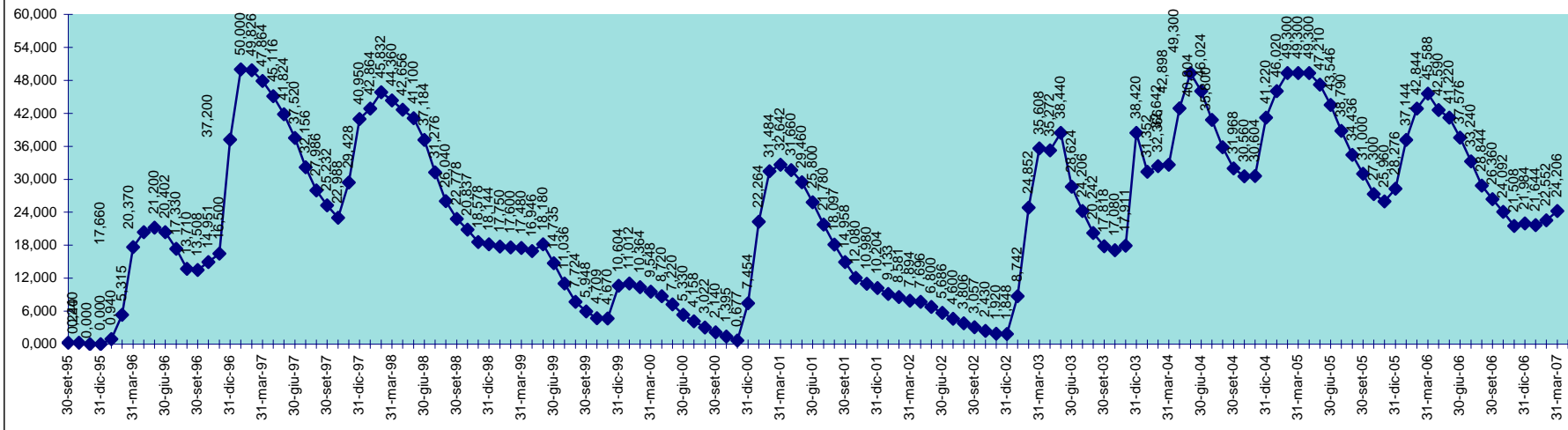


SCALA 1,000 = 1.000.000 MC

INVASO DI MEDAU ZIRIMILIS
DISPONIBILITA' DAL 30.04.2001 AL 31.03.2007

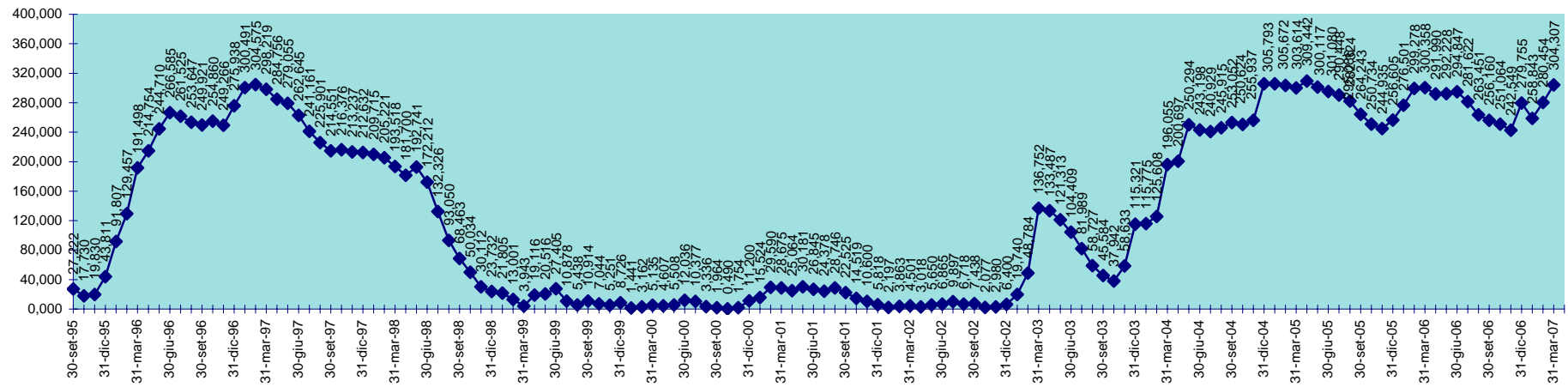


INVASO DI MONTE PRANU
DISPONIBILITA' DAL 30.09.1995 AL 31.03.2007



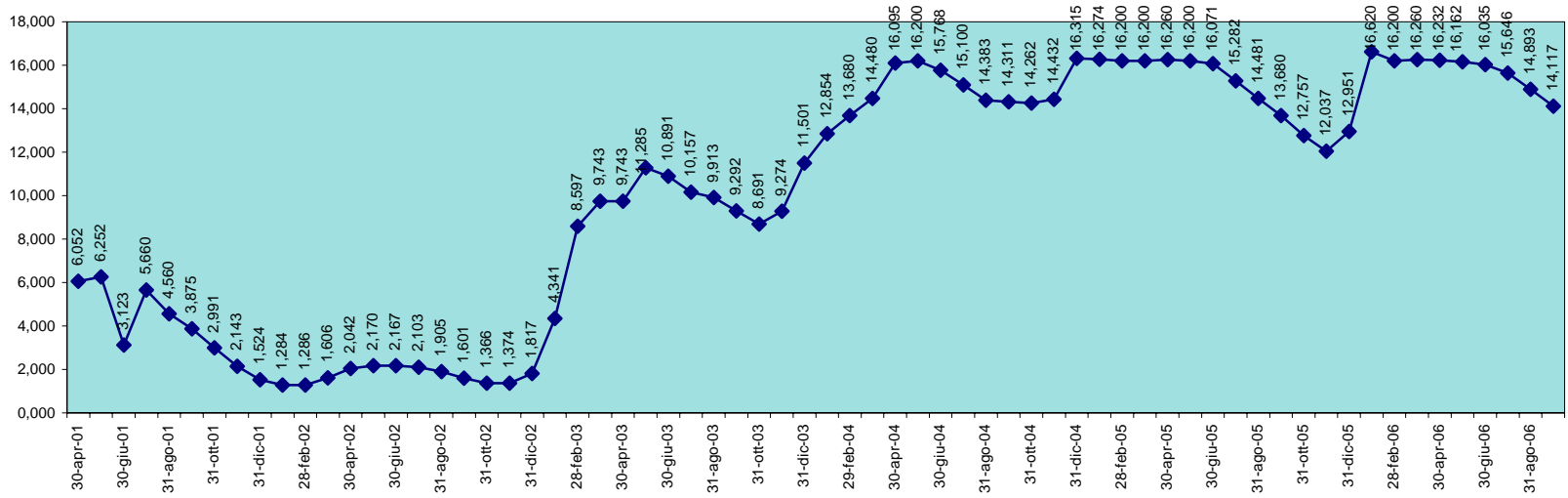
SCALA 1,000 = 1.000.000 MC

INVASO DEL MULARGIA
DISPONIBILITA' DAL 30.09.1995 AL 31.03.2007

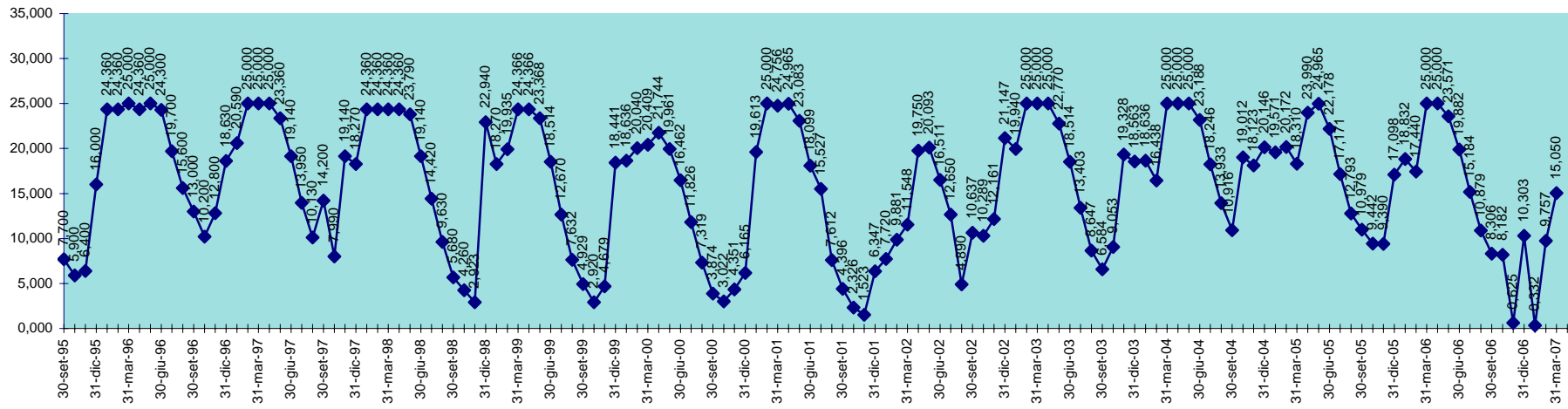


SCALA 1,000 = 1.000.000 MC

INVASO DI OLAI
DISPONIBILITA' DAL 30.04.2001 AL 31.03.2007

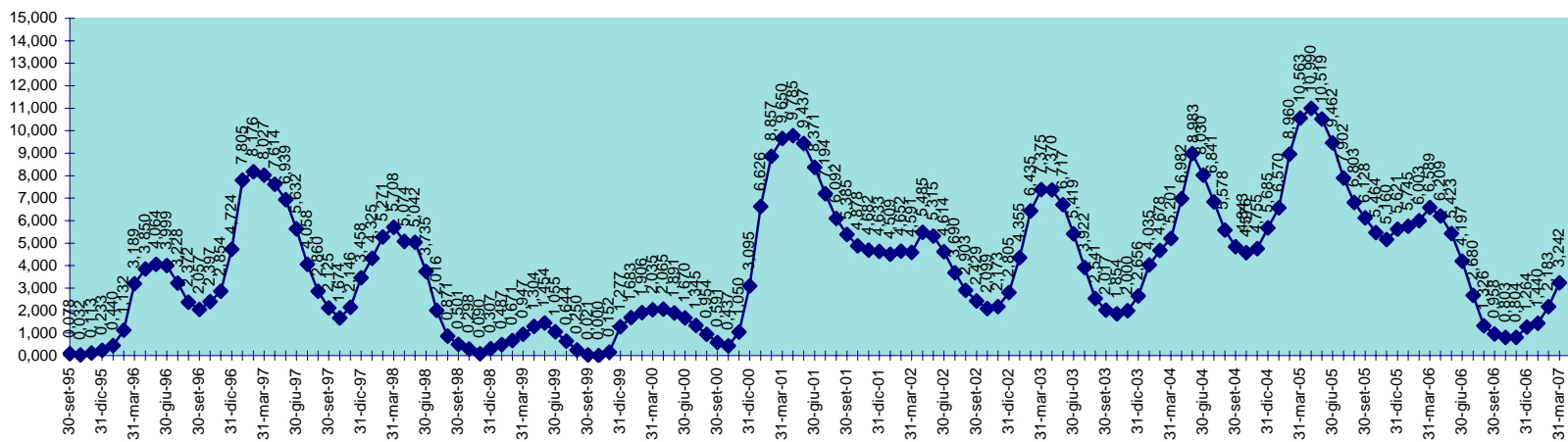


INVASO DI POSADA
DISPONIBILITA' DAL 30.09.1995 AL 31.03.2007



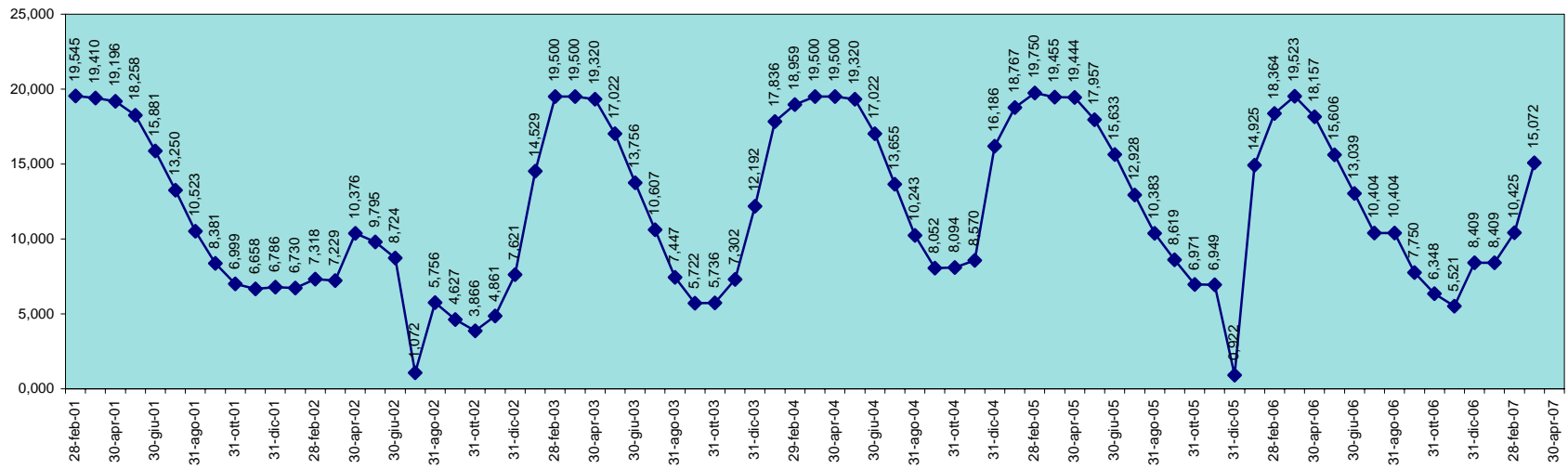
SCALA 1,000 = 1.000.000 MC

INVASO DI PUNTA GENNARTA
DISPONIBILITA' DAL 30.09.1995 AL 31.03.2007

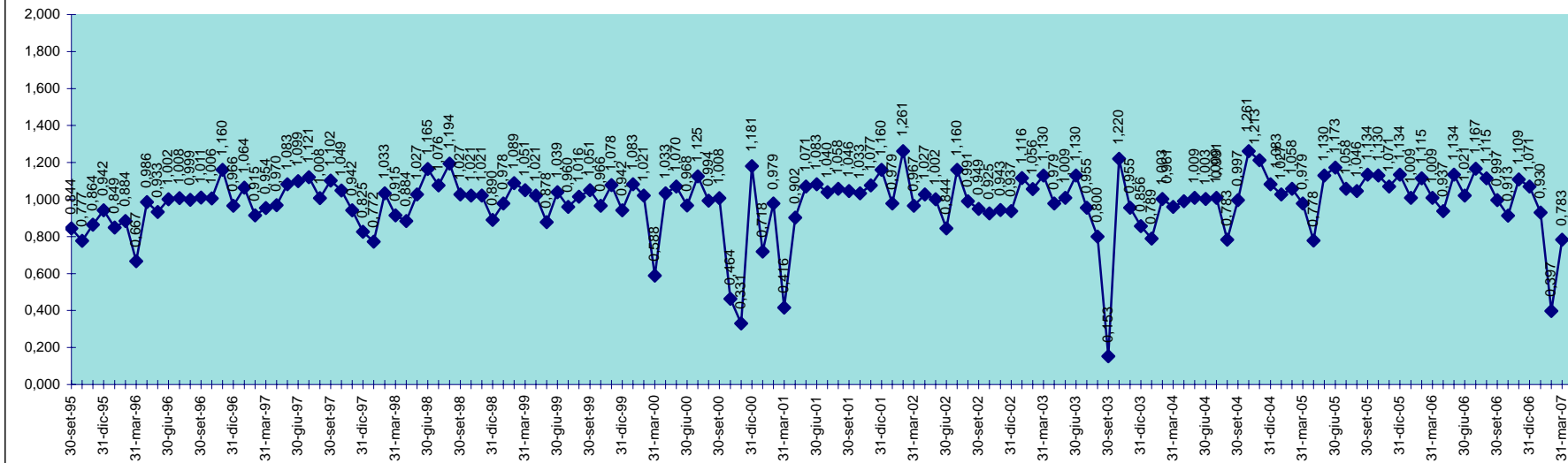


SCALA 1,000 = 1.000.000 MC

INVASO DI RIO LENI
DISPONIBILITA' DAL 28.02.2001 AL 31.03.2007

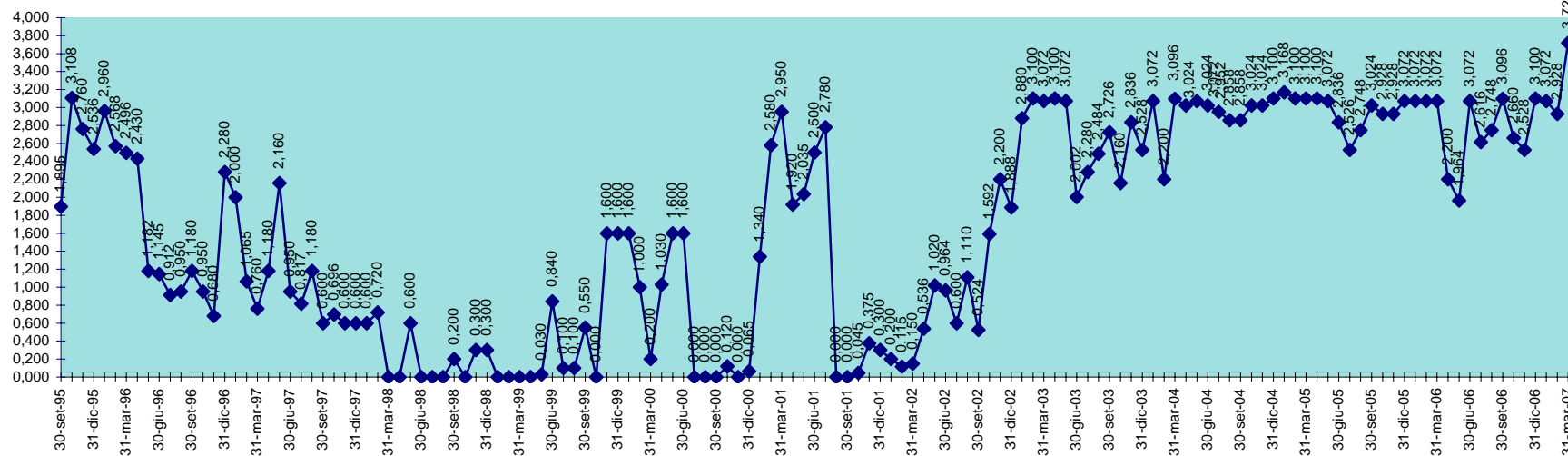


INVASO DI SA FORADA
DISPONIBILITA' DAL 30.09.1995 AL 31.03.2007



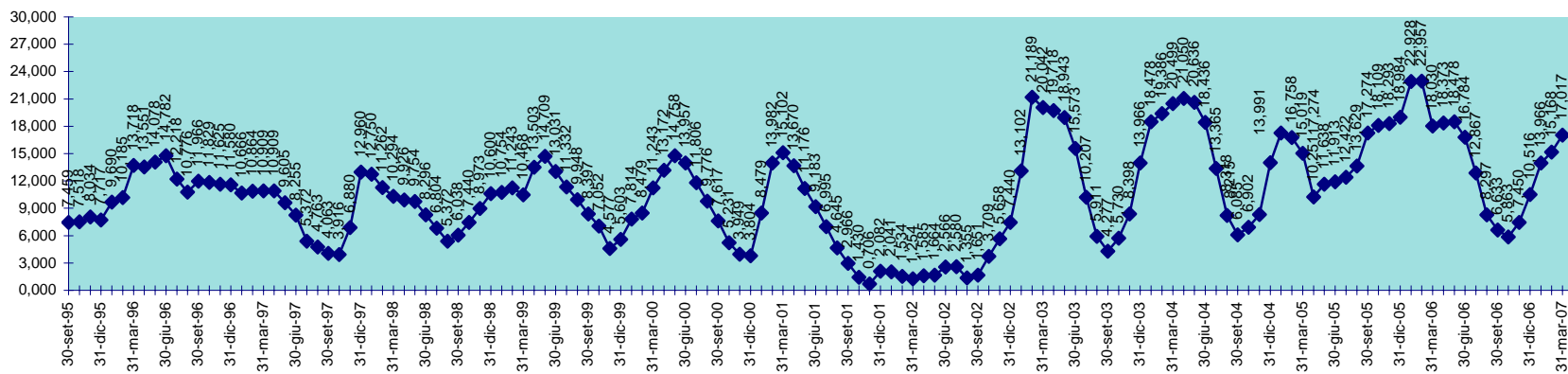
SCALA 1,000 = 1.000.000 MC

INVASO DI S. LUCIA
DISPONIBILITA' DAL 30.09.1995 AL 31.03.2007



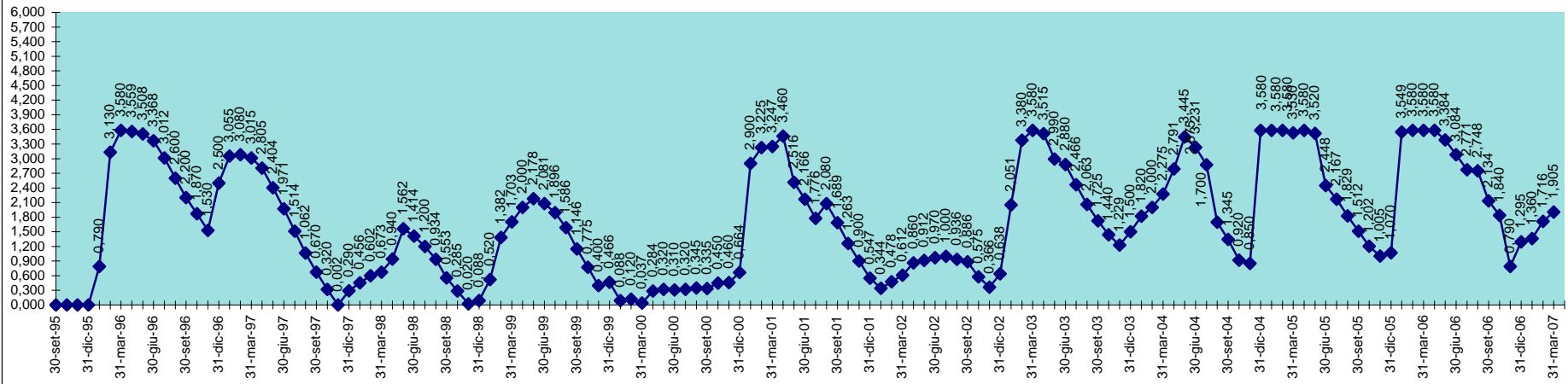
SCALA 1,000 = 1.000.000 MC

INVASO DI SIMBIRIZZI
DISPONIBILITA' DAL 30.09.1995 AL 31.03.2007



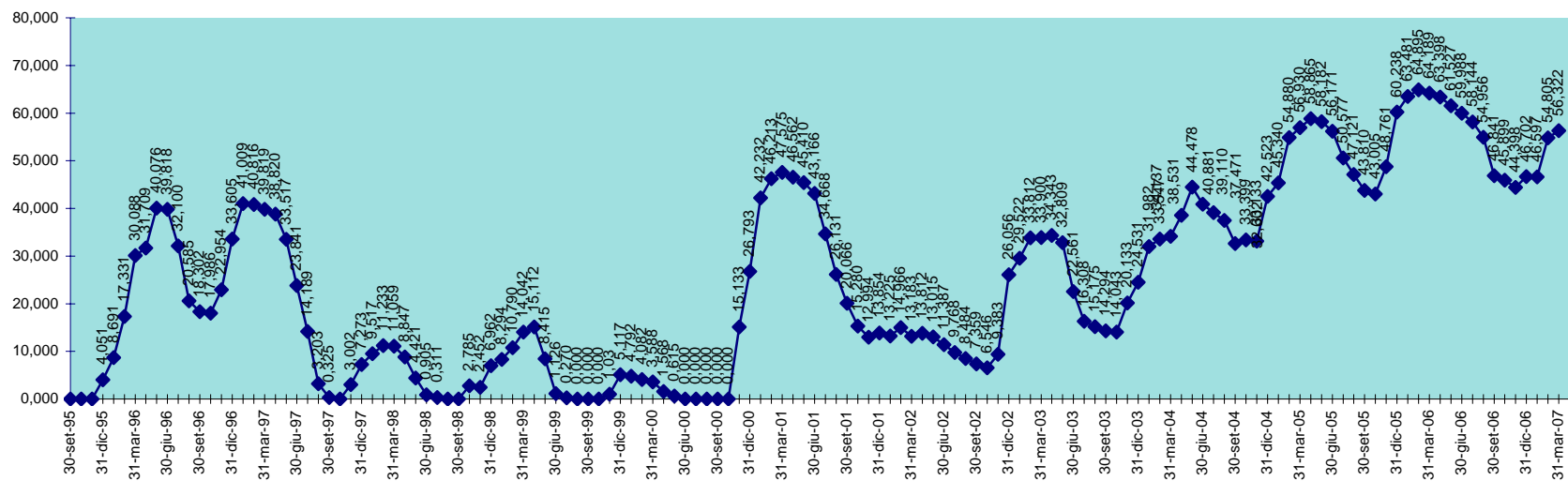
SCALA 1,000 = 1.000.000 MC

INVASO DI SOS CANALES
DISPONIBILITA' DAL 30.09.1995 AL 31.03.2007



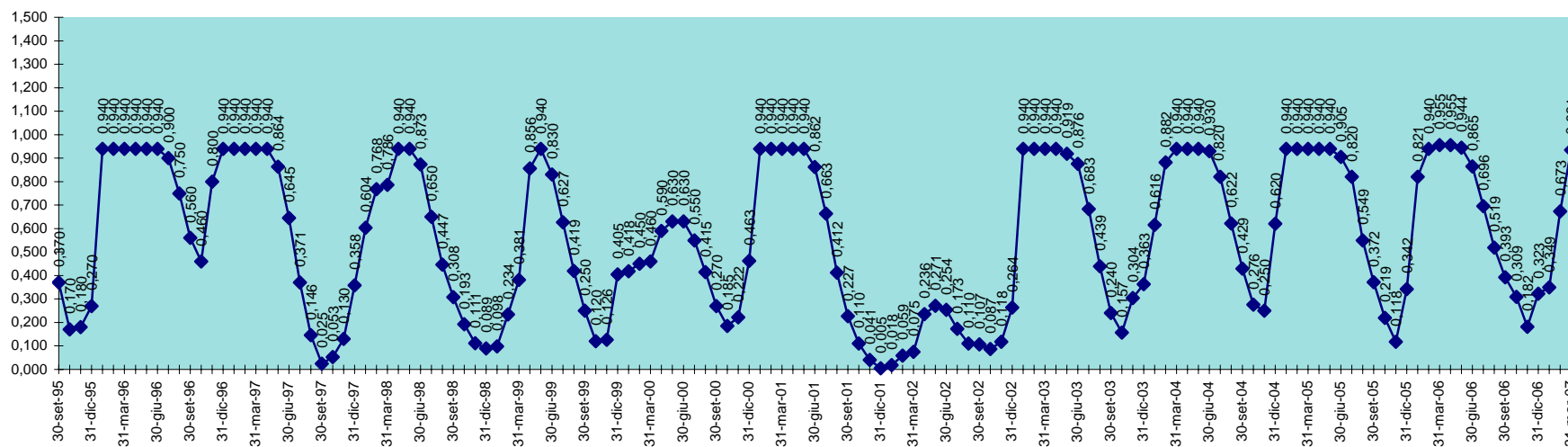
SCALA 1,000 = 1.000.000 MC

INVASO DEL TEMO
DISPONIBILITA' DAL 30.09.95 AL 31.03.2007



SCALA 1,000 = 1.000.000 MC

INVASO DI TORREI
DISPONIBILITA' DAL 30.09.1995 AL 31.03.2007



SCALA 1,000 = 1.000.000 MC